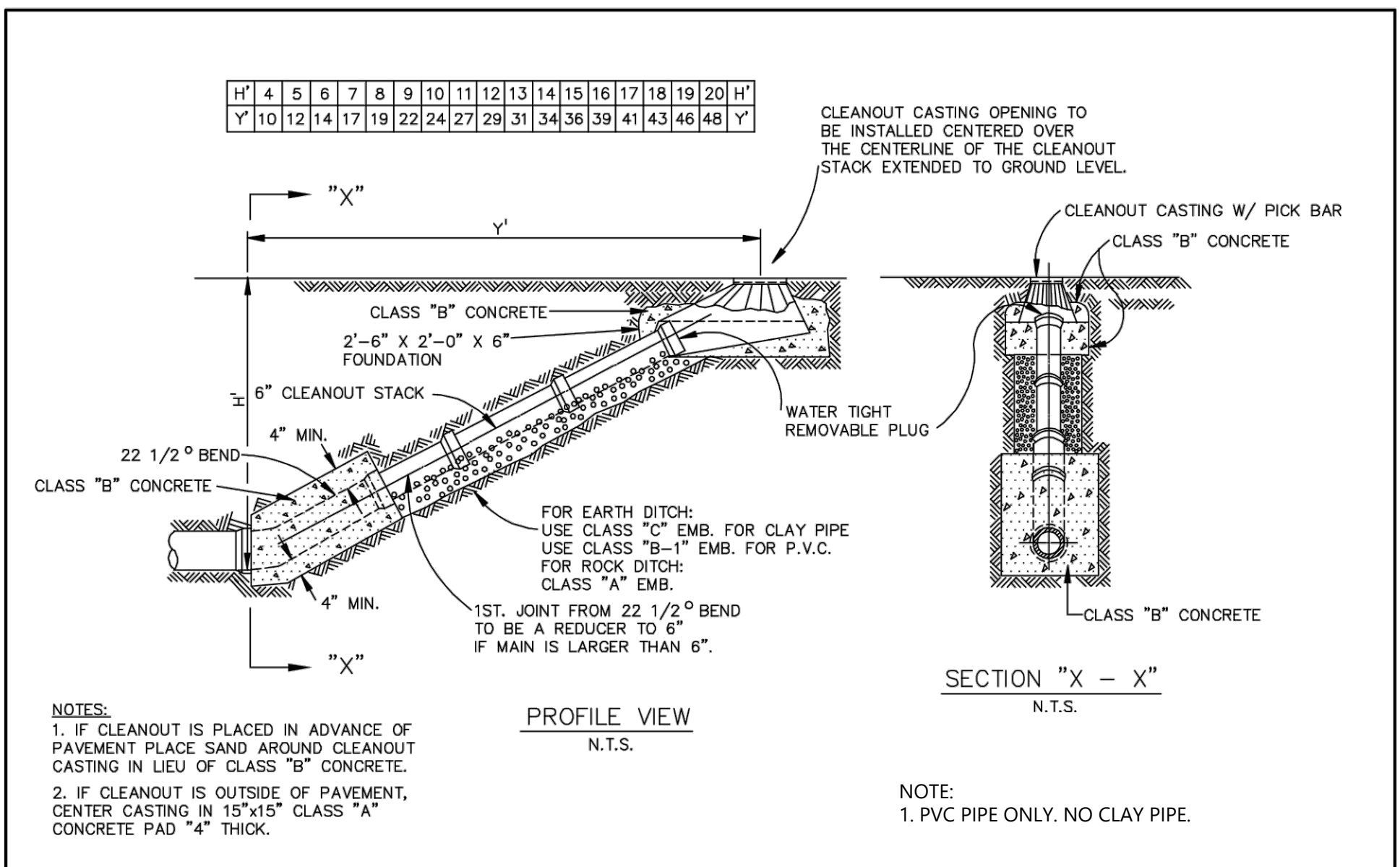


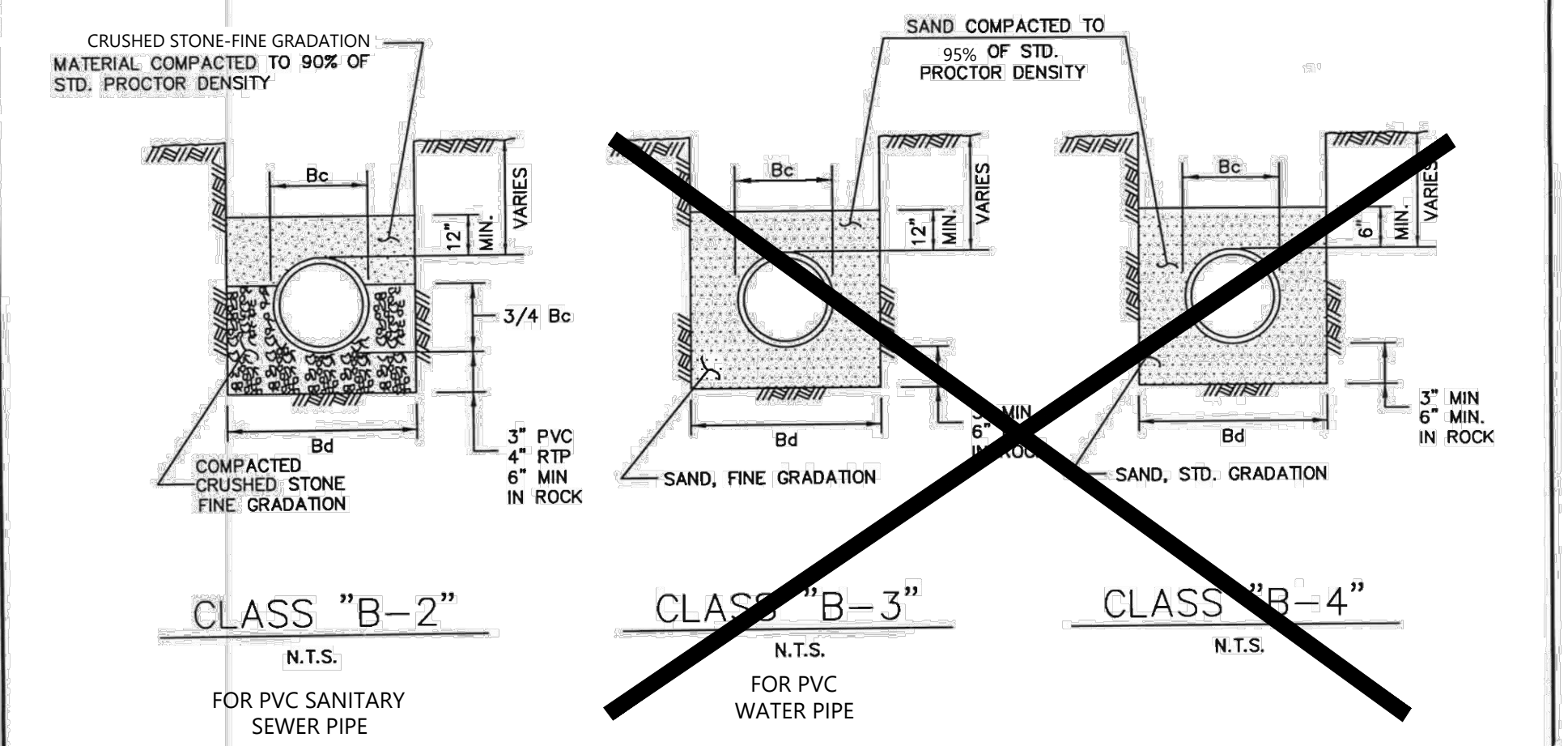
NOTES:
 1. PAYMENT TO THE CONTRACTOR FOR REPLACEMENT OF PAVEMENT AND/OR DRIVEWAYS WILL BE BASED ON ACTUAL MEASUREMENTS UP TO A MAXIMUM WIDTH EQUAL TO THE SPECIFIED MAXIMUM TRENCH WIDTH (PER STD. SPEC. ITEM 6.2.) PLUS 2 FEET. ANY EXISTING PAVEMENT DAMAGED OR REMOVED IN EXCESS OF THE MAXIMUM LIMITS SHALL BE AT THE EXPENSE OF THE CONTRACTOR.
 2. WHEN REMOVING CONCRETE PAVEMENT THE CONTRACTOR SHALL ENDEAVOR TO LIMIT DAMAGE TO EXISTING REINFORCEMENT SO IT MAY BE EMPLOYED IN THE REPLACEMENT OPERATION. IF ORIGINAL REINFORCEMENT IS CUT OR BROKEN, REPLACEMENT BARS OF THE SAME SIZE SHALL BE INSTALLED BY DRILLING AND DOWELLING AS DIRECTED BY THE OWNER.

PAVEMENT CUTS REMOVAL AND REPLACEMENT	North Central Texas Council of Governments	STANDARD SPECIFICATION REFERENCE 402.1
		DATE: OCT. '04 STANDARD DRAWING NO.: 3070

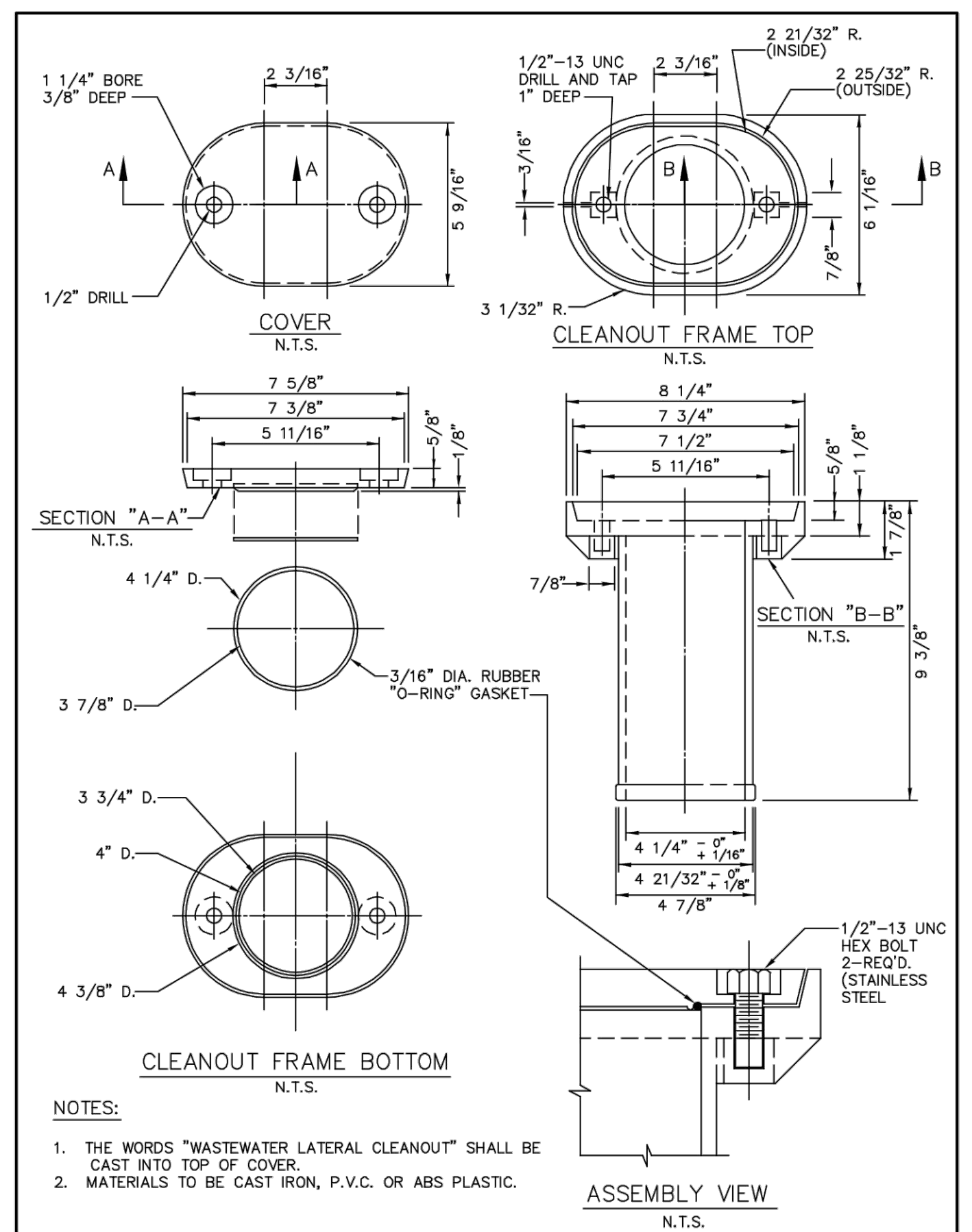
RECORD DRAWINGS:
 IT WAS THE INTENT THAT THE IMPROVEMENTS SHOWN BE CONSTRUCTED ACCORDING TO THESE PLANS AS APPROVED BY THE CITY. THE LINES AND GRADES WERE SET ON THE GROUND FOR CONSTRUCTION ACCORDING TO SAID PLANS. THE CITY INSPECTED THE CONSTRUCTION. WE ARE NOT AWARE OF ANY CHANGES OR REVISIONS TO THESE PLANS DURING CONSTRUCTION OTHER THAN THOSE SHOWN. TO THE BEST OF OUR KNOWLEDGE, WESTWOOD PROFESSIONAL SERVICES, INC. HEREBY STATES THAT THIS PLAN IS AS-BUILT. THE INFORMATION PROVIDED IS BASED ON SURVEYING AT THE SITE AND INFORMATION PROVIDED BY THE CONTRACTOR. DATE: 10-09-2020



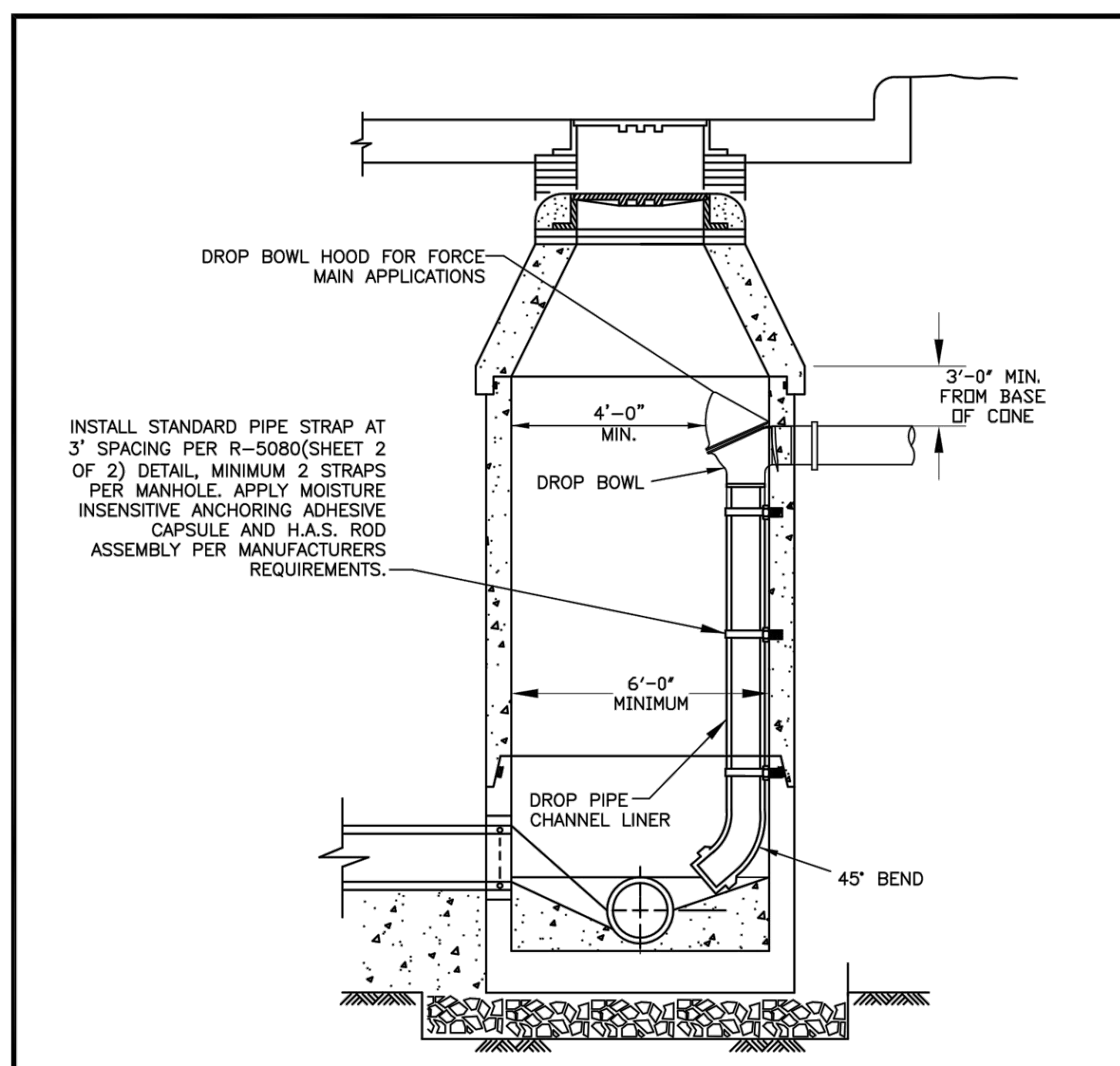
WASTEWATER MAIN CLEANOUT	North Central Texas Council of Governments	STANDARD SPECIFICATION REFERENCE 502.2
		DATE: OCT. '04 STANDARD DRAWING NO.: 5110



EMBEDMENT CLASS "B-2", "B-3", & "B-4"	North Central Texas Council of Governments	STANDARD SPECIFICATION REFERENCE 504.5
		DATE: OCT. '04 STANDARD DRAWING NO.: 3030



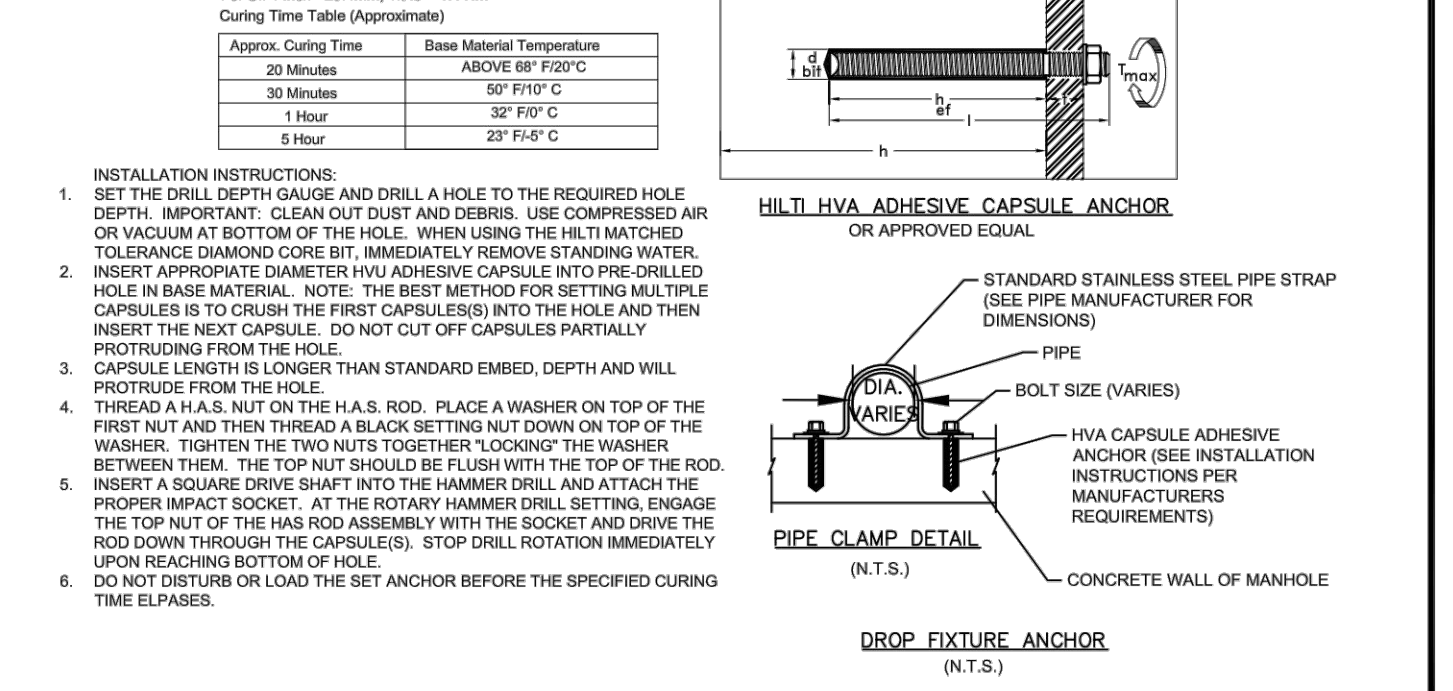
WASTEWATER LATERAL CLEANOUT FRAME & COVER	North Central Texas Council of Governments	STANDARD SPECIFICATION REFERENCE 502.10
		DATE: OCT. '04 STANDARD DRAWING NO.: 5140



WASTEWATER MANHOLE DROP CONNECTIONS	CITY OF ROCKWALL	DATE: AUG '19 DRAWING NO.: R-5080
--	------------------	--------------------------------------

HVA ADHESIVE CAPSULE ANCHOR
 A. DRILL HOLES WITH ANSI #212 MATCHED TOLERANCE CARBIDE TIPPED DRILL BITS WITH DRILL IN ROTO-HAMMER MODE OR USE A MATCHED TOLERANCE DIAMOND CORE DRILL BIT OF DIAMETER SPECIFIED BY HILTI.
 B. DRILLED HOLE SPECIFICATIONS (DIAMETER & DEPTH) SHALL COMPLY WITH HILTI SPECIFICATION OR ICC ESR 1682.
 C. ALLOWABLE LOADS MAY BE INCREASED BY 33-10% FOR SHORT TERM WIND OR SEISMIC LOAD RESISTANCE AND ICC ESR 1682 UNLESS NOT PERMITTED BY THE APPLICABLE BUILDING CODE.
 D. WHEN CONDUCTED, PROOF TEST ANCHORS IN THE FIELD TO 150-200% OF HILTI PUBLISHED ALLOWABLE TENSION LOAD UNLESS NOTED OTHERWISE IN A PROOF TEST LOAD TABLE. TORQUE TESTING IS NOT PERMITTED.
 E. ANCHORS SHALL BE TIGHTENED WITH A CALIBRATED TORQUE WRENCH. USE OF AN IMPACT WRENCH IS NOT PERMITTED.
 F. CONTACT HILTI TECHNICAL SUPPORT AT 1-800-878-8000 FOR INSTALLATION INSTRUCTIONS IN SUBMERGED WATER CONDITIONS.
 G. CONTACT HILTI TECHNICAL SUPPORT AT 1-800-878-8000 FOR ADDITIONAL ASSISTANCE WITH HVA ADHESIVE ANCHOR INSTALLATIONS.
 H. INSTALLATION INSTRUCTIONS:
 H.1. FOR HVA ADHESIVE CAPSULES WITH H.A.S. RODS:
 1. DRILL ANCHOR HOLE WITH A CARBIDE BIT (SEE NOTE 1 ABOVE), TO SPECIFIED EMBEDMENT DEPTH.
 2. CLEAN HOLE WITH COMPRESSED AIR OR BLOW OUT PUMP. INSERT NOZZLE TO BOTTOM OF HOLE.
 3. IF USING MATCHED TOLERANCE CORE BIT, REMOVE STANDING WATER FROM HOLE.
 4. INSERT APPROPRIATE HVA CAPSULE INTO HOLE WITH POINTED END FIRST. CAPSULE LENGTH IS LONGER THAN STANDARD EMBEDMENT AND WILL PROTRUDE FROM HOLE. DO NOT CUT OFF ANY PART OF THE HVA CAPSULE.
 5. THREAD NUT ON TO ROD.
 6. PLACE A WASHER ON FIRST NUT AND THREAD BLACK SETTING NUT DOWN ON WASHER.
 7. TIGHTEN NUTS TOGETHER SO THAT BLACK SETTING WASHERS AT TOP OF ROD.
 8. INSERT SQUARE DRIVE SHAFT INTO HAMMER DRILL AND ATTACH PROPER IMPACT SOCKET.
 9. WITH HAMMER DRILL ON ROTARY HAMMER, ENGAGE TOP NUT OF HAS ROD ASSEMBLY AND ROTOHAMMER ROD THROUGH CAPSULE(S) INTO THE HOLE. STOP DRILL ROTATION IMMEDIATELY UPON REACHING BOTTOM OF HOLE.
 10. DO NOT DISTURB OR LOAD ANCHOR BEFORE CURING TIME ELAPSES.

DETAILS	HAS Rod Size	1/2	3/8	1/2	5/8	3/4	7/8	1	1-1/4
d _{nom} = nominal bit diameter	in.	10/32	9/16	11/16	7/8	1	1-1/8	1-3/8	
F _{nom} = min. depth of embed. = capsule length	in.	3-1/2	4-1/4	5	6-5/8	6-5/8	8-1/4	12	
L = max. thickness fastener	in.	1	1-1/2	1-3/4	2	2-1/4	2-1/2	2-3/4	
T = max. tightening torque	ft-lb	18	30	75	150	175	235	400	
H = minimum base material thickness	in.	6-1/4	6-3/8	7-1/2	10	10	12-3/8	16	
A = min. hole diameter	in.	1.0h ₁	1.0h ₂	1.0h ₃	1.0h ₄	1.0h ₅	1.0h ₆	1.0h ₇	
		2	2	2	2	2	2	2	
Recommended Hilti Rotary Hammer Drill		TE-0.15	18M.25	TE-18M.25/35.76	TE-65.76		TE-76		

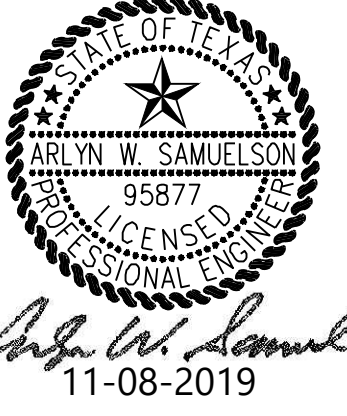


WASTEWATER MANHOLE DROP CONNECTIONS	CITY OF ROCKWALL	DATE: AUG '19 DRAWING NO.: R-5080
--	------------------	--------------------------------------

DESIGNED: AWS	INITIAL ISSUE: 11-08-2019
CHECKED: AWS	REVISIONS:
DRAWN: WTW	03-16-2020 SITE REVISIONS
HORIZONTAL SCALE:	10-09-2020 RECORD DRAWINGS
VERTICAL SCALE:	

PREPARED FOR:
PROSS DESIGN GROUP, INC.
 5310 HARVEST HILL ROAD, SUITE 180
 DALLAS, TEXAS 75230

11-08-2019



INK ROOM & LOCKER ROOM ADDITION
 ROCKWALL, TEXAS

Westwood
 Phone: (214) 473-4640
 Toll Free: (888) 937-5150
 2740 Dallas Parkway, Suite 280
 Plano, TX 75093
 westwoodps.com

UTILITY DETAILS
 SHEET NUMBER: 5.02
 DATE: 11-08-2019