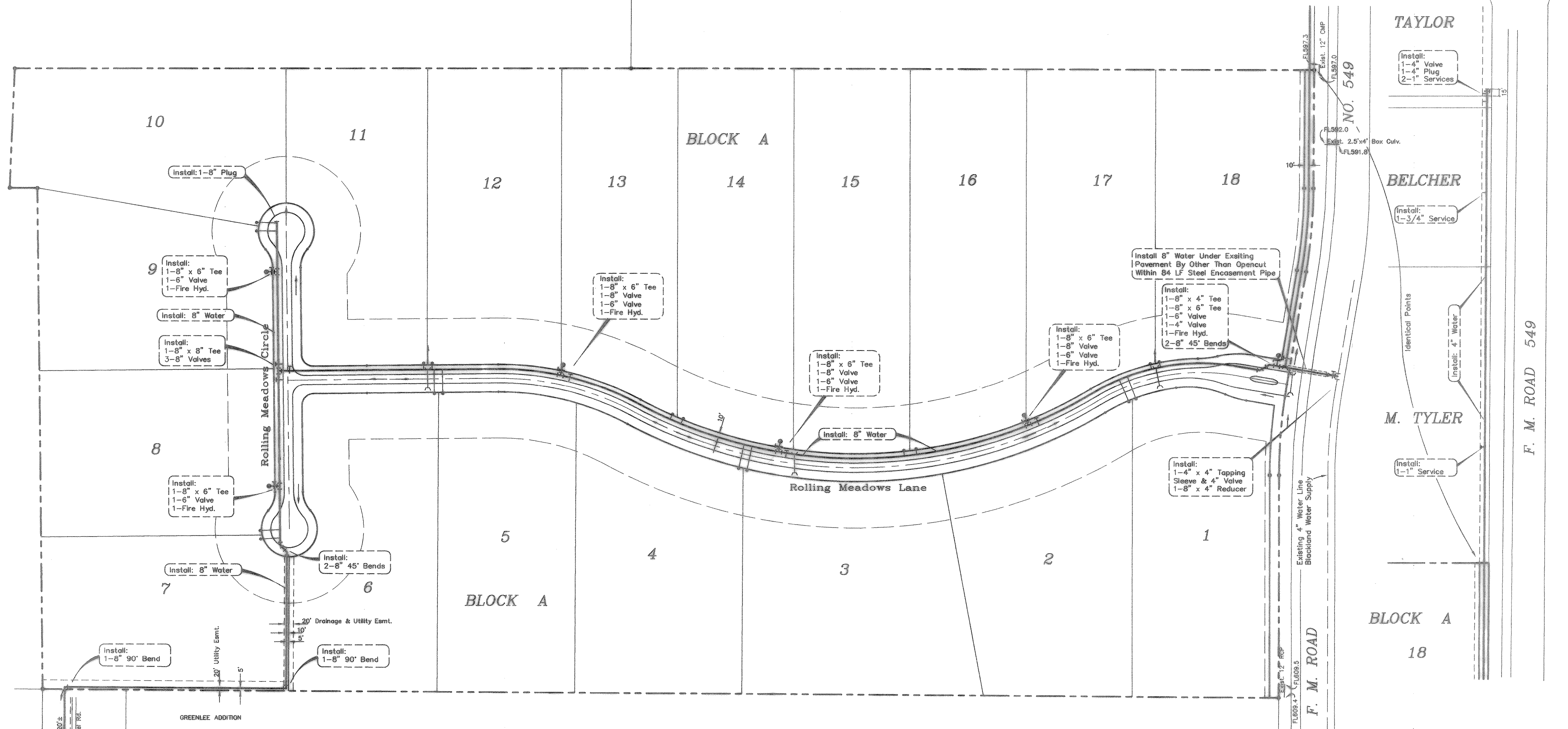


HWY. NO. 66



CAUTION !!!
EXISTING UTILITIES

EXISTING UTILITIES AND UNDERGROUND FACILITIES INDICATED ON THESE PLANS HAVE BEEN LOCATED FROM REFERENCE INFORMATION. IT SHALL BE THE RESPONSIBILITY OF THE CONTRACTOR TO VERIFY BOTH HORIZONTALLY AND VERTICALLY THE LOCATION OF ALL EXISTING UTILITIES AND UNDERGROUND FACILITIES PRIOR TO CONSTRUCTION, TO TAKE NECESSARY PRECAUTIONS IN ORDER TO PROTECT ALL FACILITIES ENCOUNTERED. THE CONTRACTOR SHALL PRESERVE AND PROTECT ALL EXISTING UTILITIES FROM DAMAGE DURING CONSTRUCTION.

NOTES

ALL CONSTRUCTION AND MATERIALS SHALL CONFORM TO ROCKWALL COUNTY, TEXAS STANDARDS AND SPECIFICATIONS.

PROPOSED WATER LINE SHALL HAVE A MINIMUM COVER OF 3 FEET FROM THE FLOWLINE OF DRAINAGE DITCH.

WATER SERVICES SHALL BE 3/4" W/ METER BOX.

BENCH MARK

Monument #927 On North Side Of UP RR & East Side Of State Hwy. No. 549.
Elev. = 612.96

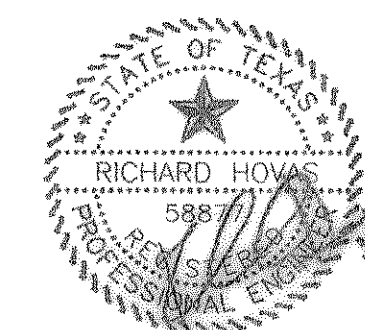
UTILITY PLAN
ROLLING MEADOWS ESTATES

Rockwall County, Texas

TIPTON ENGINEERING, INC.

6330 Belt Line Rd. ~ Suite C ~ Garland, Texas 75043

DESIGN	DRAWN	DATE	SCALE	NOTES	FILE	NO.
T.E. Inc.	T.E. Inc.	12-95	1"=100'		4180	7



The seal appearing on this document was authorized by Richard Howes, P.E. 5887

3-05-96 4180W