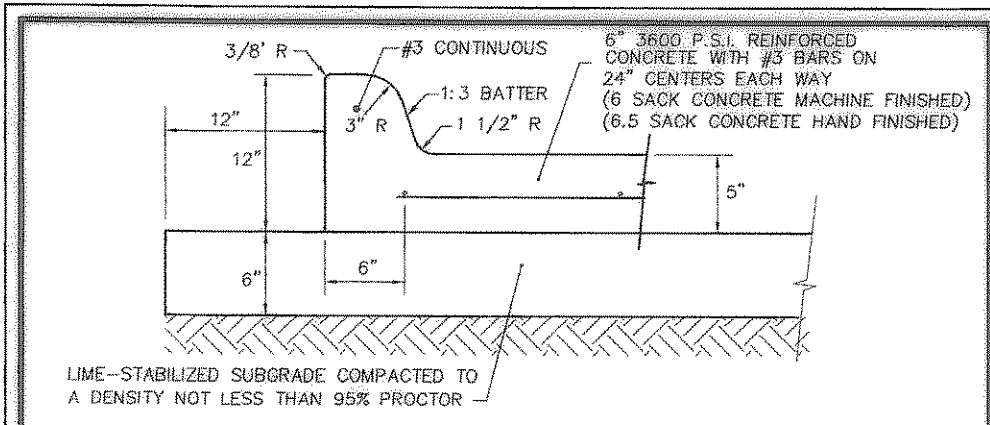
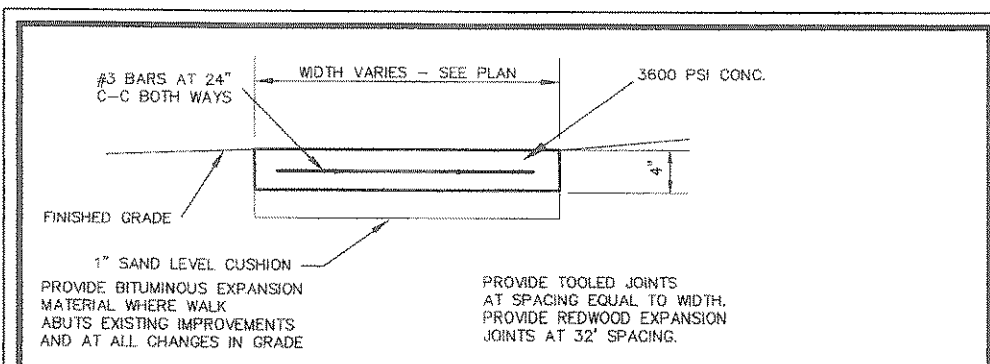


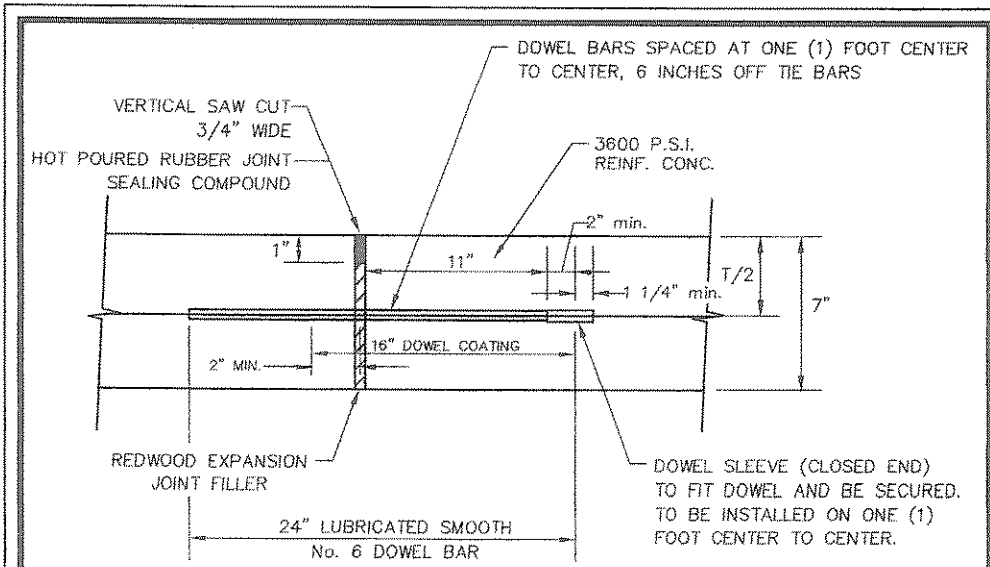
**1** TYPICAL 6" CONCRETE CURB AND GUTTER  
NTS (MATCH CITY STREET SECTION)



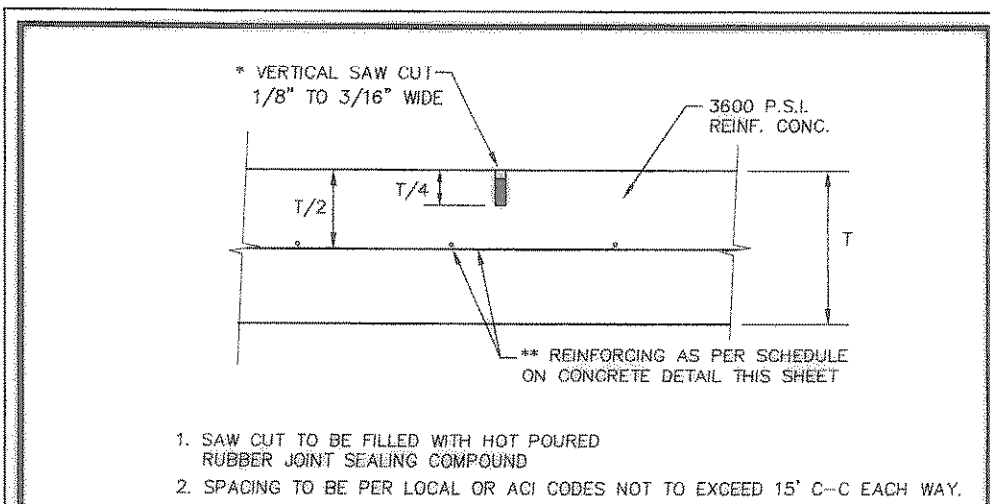
**2** TYPICAL 5" CONCRETE CURB AND GUTTER  
NTS



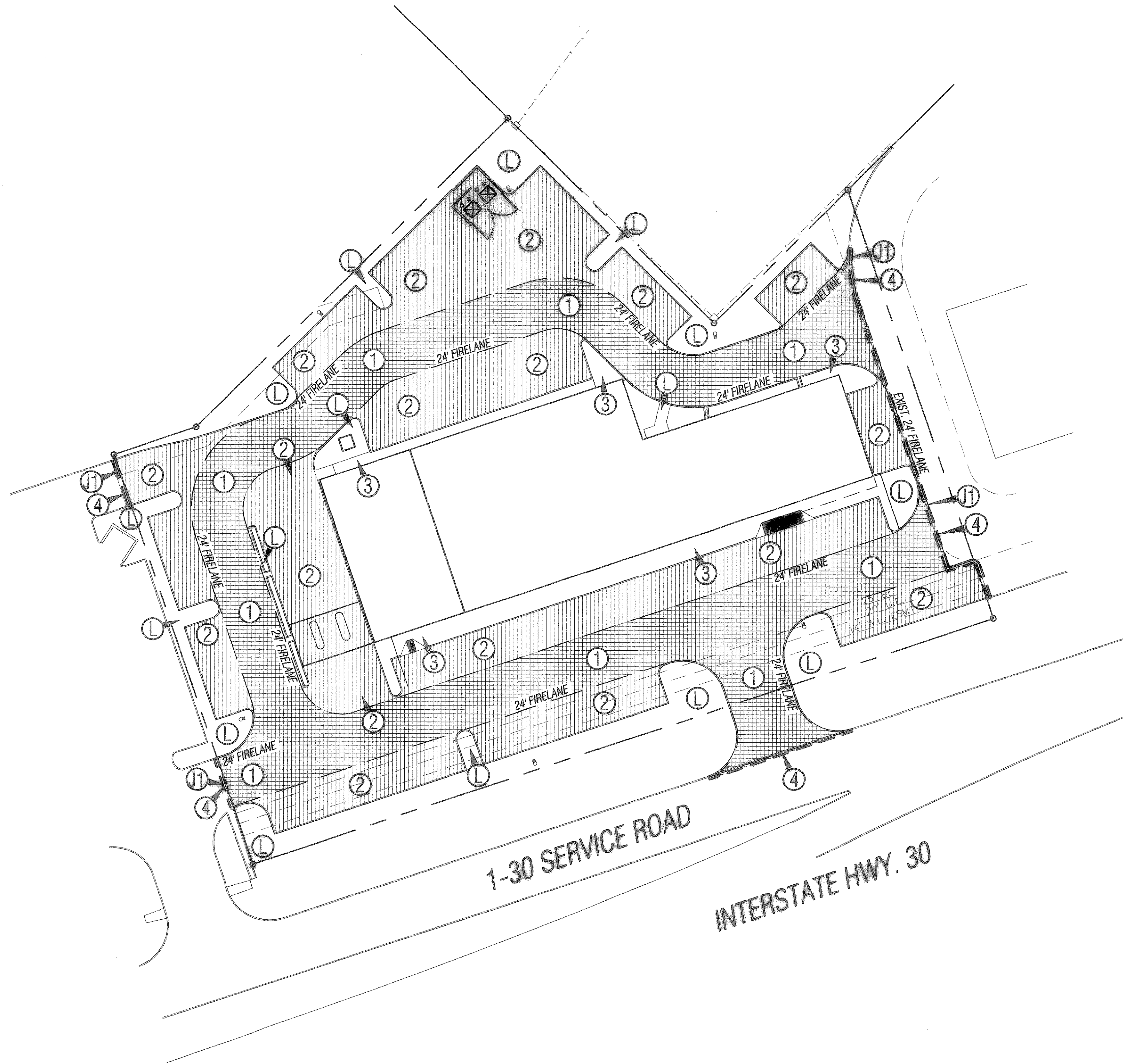
**3** CONCRETE WALK  
NTS



**J1** TYPICAL EXPANSION JOINT  
NTS



**J2** TYPICAL SAWED DUMMY JOINT  
NTS



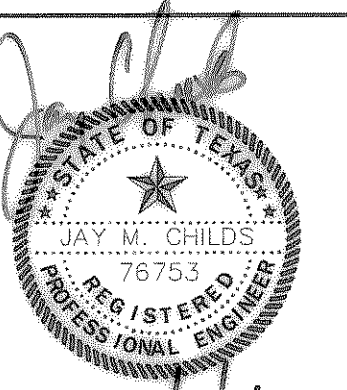
**BENCHMARK:**  
SQUARE CUT ON NORTH CORNER OF INLET  
ON EAST SIDE OF TACO BUENO.  
ELEVATION = 541.75

- NOTES:**
- JOINTS SHALL BE INSTALLED AND SPACED PER DETAILS J1 AND J2 THIS SHEET OR AS SHOWN.
  - ALL FILL SHALL BE COMPACTED WITH SHEEPS-FOOT ROLLER.
  - CONCRETE MIX:  
A.) 6.5 SACK CEMENT FOR HAND POUR.  
B.) 6.0 SACK CEMENT FOR MACHINE POUR.

**LEGEND**

+ETP600.0	EX. TOP OF PYMT.
+ETG600.0	EX. TOP OF GRND.
+ETC600.0	EX. TOP OF CURB
+600.0	FIN.FLR. SPOT ELEV.
TP600.0	TOP OF PAVEMENT
TC600.0	TOP OF CONCRETE
TG600.0	TOP OF GROUND
600.0	TOP OF CURB
650	PROP. GRADE LINE
-650-	EX. GRADE LINE
FF	FINISHED FLOOR
↑	GUY WIRE ANCHOR
⊙	POWER POLE
⊕	STREET/CABLE SIGN
⊖	WATER VALVE
⊗	UTILITY BOX
⊘	WOOD BOLLARD
⊙	GAS METER
⊙	CURB INLET
⊙	GRATE INLET
⊙	FIRE HYDRANT
⊙	WATER METER
⊙	STORM/SS MANHOLE
⊙	TREE
⊙	LIGHT POLE
⊙	SIGNAL POLE
⊙	SIGNAL PULL BOX

- PAVING NOTES**
- ALL WORKMANSHIP AND MATERIALS SHALL BE IN ACCORDANCE WITH CITY OF ROCKWALL STANDARD SPECIFICATIONS AND/OR SPECIFICATIONS ESTABLISHED BY THE PROJECT.
  - ALL DIMENSIONS ARE TO BACK OF CURB UNLESS SPECIFIED OTHERWISE. USUAL PAVEMENT THICKNESS IS AS SHOWN. SUBGRADE DESIGN SHALL BE AS SHOWN AND SHALL EXTEND 12" MIN. BEHIND CURB.
  - REINFORCED CONCRETE PAVEMENT:  
1. CONCRETE STRENGTH SHALL BE 3600 PSI.  
2. ALL CURBS SHALL BE INTEGRAL WITH PAVEMENT.  
3. DETAIL AND ARRANGEMENT OF PAVEMENT JOINTS, ALL TYPES, SHALL BE AS NOTED.
  - SUBGRADE:  
SUBGRADE UNDER ALL PAVEMENT SHALL BE 6" THICK AND SHALL BE COMPACTED TO A DENSITY NOT LESS THAN 95 PERCENT PROCTOR.
  - MARK FIRE LANE TO CITY SPECIFICATIONS. "NO PARKING FIRE LANE" EVERY 25' WHITE 4" LETTERS ON A 6" RED STRIPED BACKGROUND.
  - FIRE LANE MUST MEET REQUIRED MINIMUM RADIUS OF 20'.
- ① 6" REINFORCED CONCRETE PAVEMENT WITH INTEGRAL CURB INSTALLED PER CITY OF ROCKWALL STD. DETAIL 1 THIS SHEET. (SEE DETAIL 1 THIS SHEET) [Pattern]
- ② 5" REINFORCED CONCRETE PAVEMENT WITH INTEGRAL CURB INSTALLED PER CITY OF ROCKWALL STD. DETAIL 2 THIS SHEET. (SEE DETAIL 2 THIS SHEET) [Pattern]
- ③ 4" REINFORCED CONCRETE SIDEWALK [Pattern]
- ④ SAW CUT (FULL DEPTH) A TOTAL 18" FROM B/C INTO EXISTING CONCRETE PAVEMENT. DOWEL PROPOSED CONCRETE INTO EXISTING PER CITY OF ROCKWALL STANDARD CONSTRUCTION DETAILS. [Pattern]
- Ⓛ LANDSCAPE AREAS.



DATE SIGNED: 3/2/04

A New Site Design for  
**ROCKWALL TOWNE CENTRE, REPLAT**  
**SHAFFER PROPERTIES**  
**ROCKWALL, TEXAS**  
PAVING PLAN



**SCALE:**  
Horizontal: 1" = 30'  
Vertical: N/A

**VERIFY SCALES**  
BAR IS ONE INCH ON ORIGINAL DRAWING  
0 = 1"  
IF NOT ONE INCH ON THIS SHEET, ADJUST SCALES ACCORDINGLY.

Project No.: ESPC002  
Date: 03/29/04  
Issue: AS BUILT  
Drawn By: TDK  
Checked By: JMC  
Revisions: