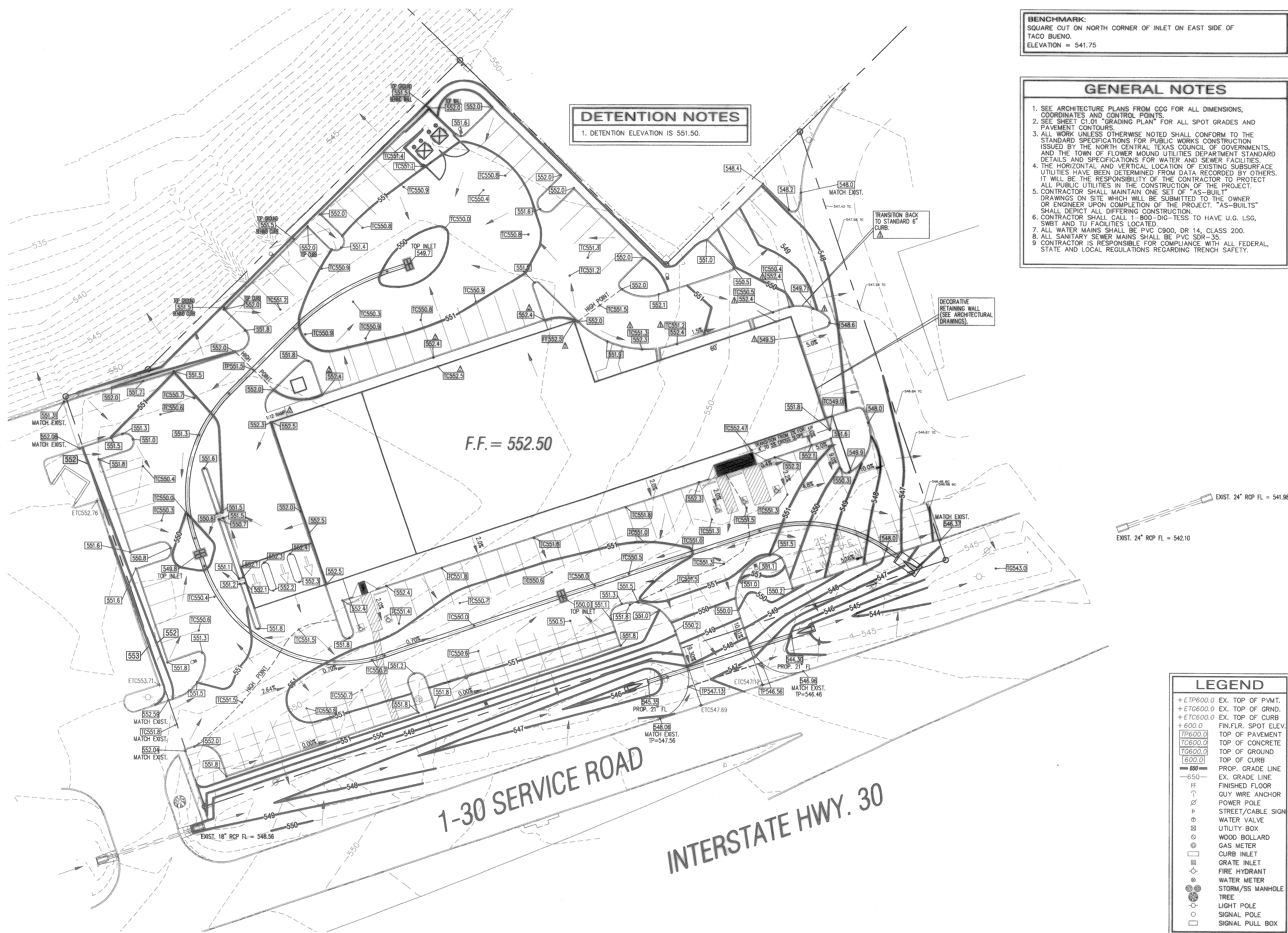


DETENTION NOTES

1. DETENTION ELEVATION IS 551.50.

BENCHMARK:
 SQUARE CUT ON NORTH CORNER OF INLET ON EAST SIDE OF TACO BUENO.
 ELEVATION = 541.75

- ### GENERAL NOTES
- SEE ARCHITECTURE PLANS FROM CCG FOR ALL DIMENSIONS, COORDINATES AND CONTROL POINTS.
 - SEE SHEET C1.01 "GRADING PLAN" FOR ALL SPOT GRADES AND PAVEMENT CONTOURS.
 - ALL WORK UNLESS OTHERWISE NOTED SHALL CONFORM TO THE STANDARD SPECIFICATIONS FOR PUBLIC WORKS CONSTRUCTION ISSUED BY THE NORTH CENTRAL TEXAS COUNCIL OF GOVERNMENTS, AND THE TOWN OF FLOWER MOUND UTILITIES DEPARTMENT STANDARD DETAILS AND SPECIFICATIONS FOR WATER AND SEWER FACILITIES.
 - THE HORIZONTAL AND VERTICAL LOCATION OF EXISTING SUBSURFACE UTILITIES HAVE BEEN DETERMINED FROM DATA RECORDED BY OTHERS. IT WILL BE THE RESPONSIBILITY OF THE CONTRACTOR TO PROTECT ALL PUBLIC UTILITIES IN THE CONSTRUCTION OF THE PROJECT.
 - CONTRACTOR SHALL MAINTAIN ONE SET OF "AS-BUILT" DRAWINGS ON SITE WHICH WILL BE SUBMITTED TO THE OWNER OR ENGINEER UPON COMPLETION OF THE PROJECT. "AS-BUILTS" SHALL DEPICT ALL DIFFERING CONSTRUCTION.
 - CONTRACTOR SHALL CALL 1-800-DIG-TESS TO HAVE U.G. LSG, SWBT AND TU FACILITIES LOCATED.
 - ALL WATER MAINS SHALL BE PVC C900, DR 14, CLASS 200.
 - ALL SANITARY SEWER MAINS SHALL BE PVC SDR-35.
 - CONTRACTOR IS RESPONSIBLE FOR COMPLIANCE WITH ALL FEDERAL, STATE AND LOCAL REGULATIONS REGARDING TRENCH SAFETY.



EXIST. 24" RCP FL = 541.98
 EXIST. 24" RCP FL = 542.10

LEGEND

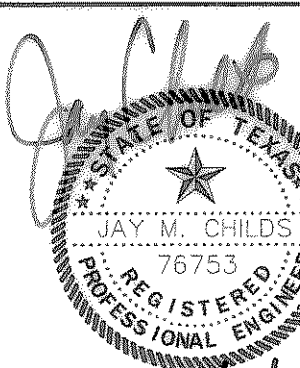
+ETP600.0	EX. TOP OF PVMT.
+ETG600.0	EX. TOP OF GRND.
+ETC600.0	EX. TOP OF CURB
+600.0	FIN.FLR. SPOT ELEV.
TP600.0	TOP OF PAVEMENT
TC600.0	TOP OF CONCRETE
TG600.0	TOP OF GROUND
600.0	TOP OF CURB
650	PROP. GRADE LINE
-650-	EX. GRADE LINE
FF	FINISHED FLOOR
↑	GUY WIRE ANCHOR
⊗	POWER POLE
⊕	STREET/CABLE SIGN
⊗	WATER VALVE
⊕	UTILITY BOX
⊗	WOOD BOLLARD
⊕	GAS METER
⊗	CURB INLET
⊕	GRATE INLET
⊗	FIRE HYDRANT
⊕	WATER METER
⊗	STORM/SS MANHOLE
⊕	TREE
⊗	LIGHT POLE
⊕	SIGNAL POLE
⊗	SIGNAL PULL BOX

dietz engineering

CIVIL ENGINEERING-SURVEYING

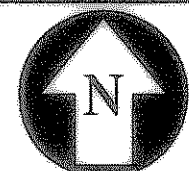
972.889.9977
 FAX 972.889.9993

1761 INTERNATIONAL PARKWAY SUITE 115
 RICHARDSON TX 75081



DATE SIGNED: 3/30/04

A New Site Design for
ROCKWALL TOWNE CENTRE, REPLAT
SHAFFER PROPERTIES
ROCKWALL, TEXAS
GRADING PLAN



SCALE:

Horizontal: 1" = 20'
 Vertical: N/A

VERIFY SCALES

BAR IS ONE INCH ON ORIGINAL DRAWING
 IF NOT ONE INCH ON THIS SHEET, ADJUST SCALES ACCORDINGLY.

Project No.: ESPC002
 Date: 03/29/04
 Issue: JMC
 Drawn By: TDK
 Checked By: JMC
 Revisions: ADJUST WALK GRADES
 ADD TALL CURB
 ADD RAMP
 05/19/2003
 05/27/2003

SHEET

C1.04