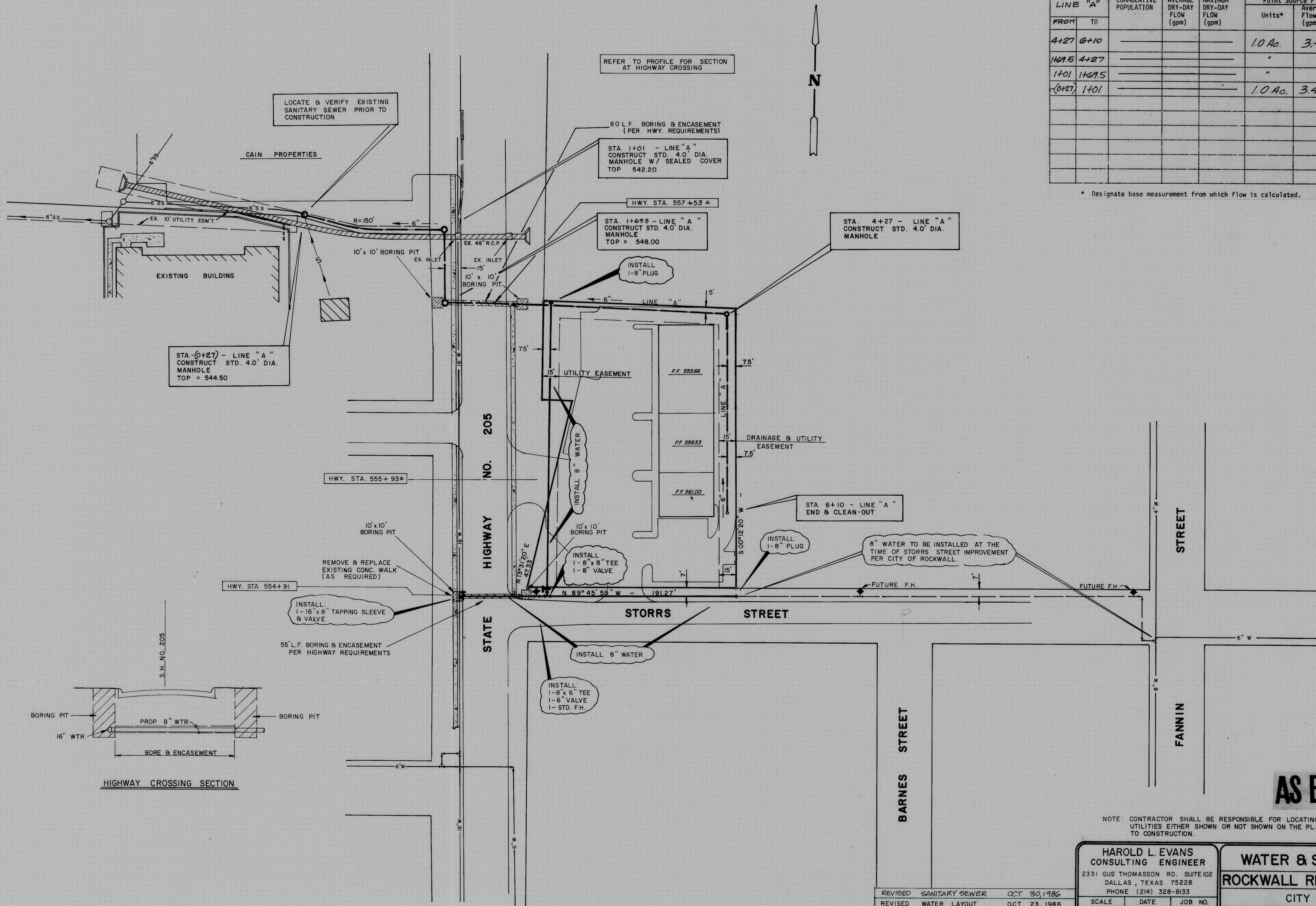


SANITARY SEWER SYSTEM SUMMARY

LINE "A"	FROM	TO	RESIDENTIAL FLOW		Commercial or Industrial Point Source Flow		Peak Infiltration/Inflow (gpm)	Total Design Flow Maximum Wet-Weather Day (gpm)	
			CUMULATIVE POPULATION	AVERAGE DRY-DAY FLOW (gpm)	MAXIMUM DRY-DAY FLOW (gpm)	Units*			Average Flow (gpm)
	4+27	6+10				1.0 Ac.	3.47	.0216	3.49
	1+01	4+27				"	"	.0304	3.50
	1+01	1+69.5				"	"	.01	3.48
	-(0+27)	1+01				1.0 Ac.	3.47	.0151	3.48

\* Designate base measurement from which flow is calculated.



**AS BUILT**

NOTE: CONTRACTOR SHALL BE RESPONSIBLE FOR LOCATING ALL UTILITIES EITHER SHOWN OR NOT SHOWN ON THE PLANS PRIOR TO CONSTRUCTION.

HAROLD L. EVANS  
CONSULTING ENGINEER  
2331 GUS THOMASSON RD. SUITE 102  
DALLAS, TEXAS 75228  
PHONE (214) 328-8133

**WATER & SANITARY SWR. PLAN**  
**ROCKWALL RETAIL STRIP CENTER**  
CITY OF ROCKWALL  
ROCKWALL COUNTY, TEXAS

REVISED SANITARY SEWER OCT. 30, 1986  
REVISED WATER LAYOUT OCT. 23, 1986  
REVISED FOR HWY. PERMIT JUNE 10, 1986

SCALE 1" = 40'  
DATE 5-8-86  
JOB NO. 85193

SM 6211

7  
8