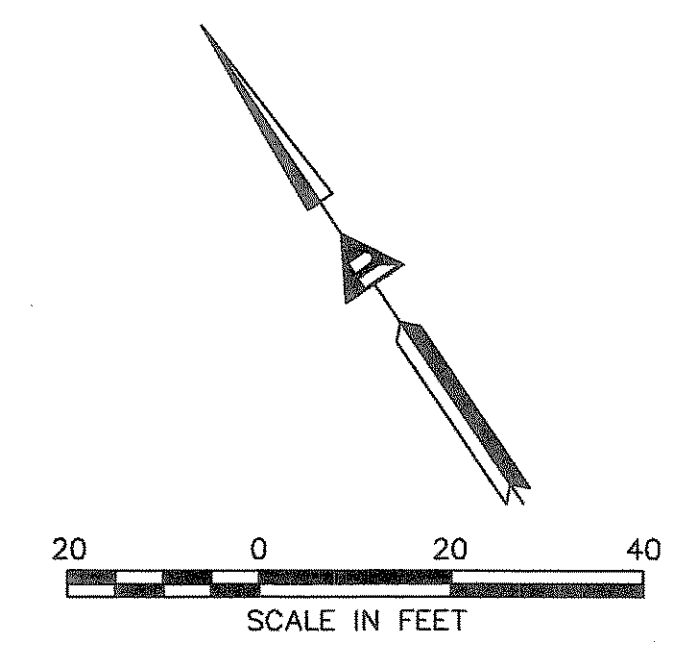
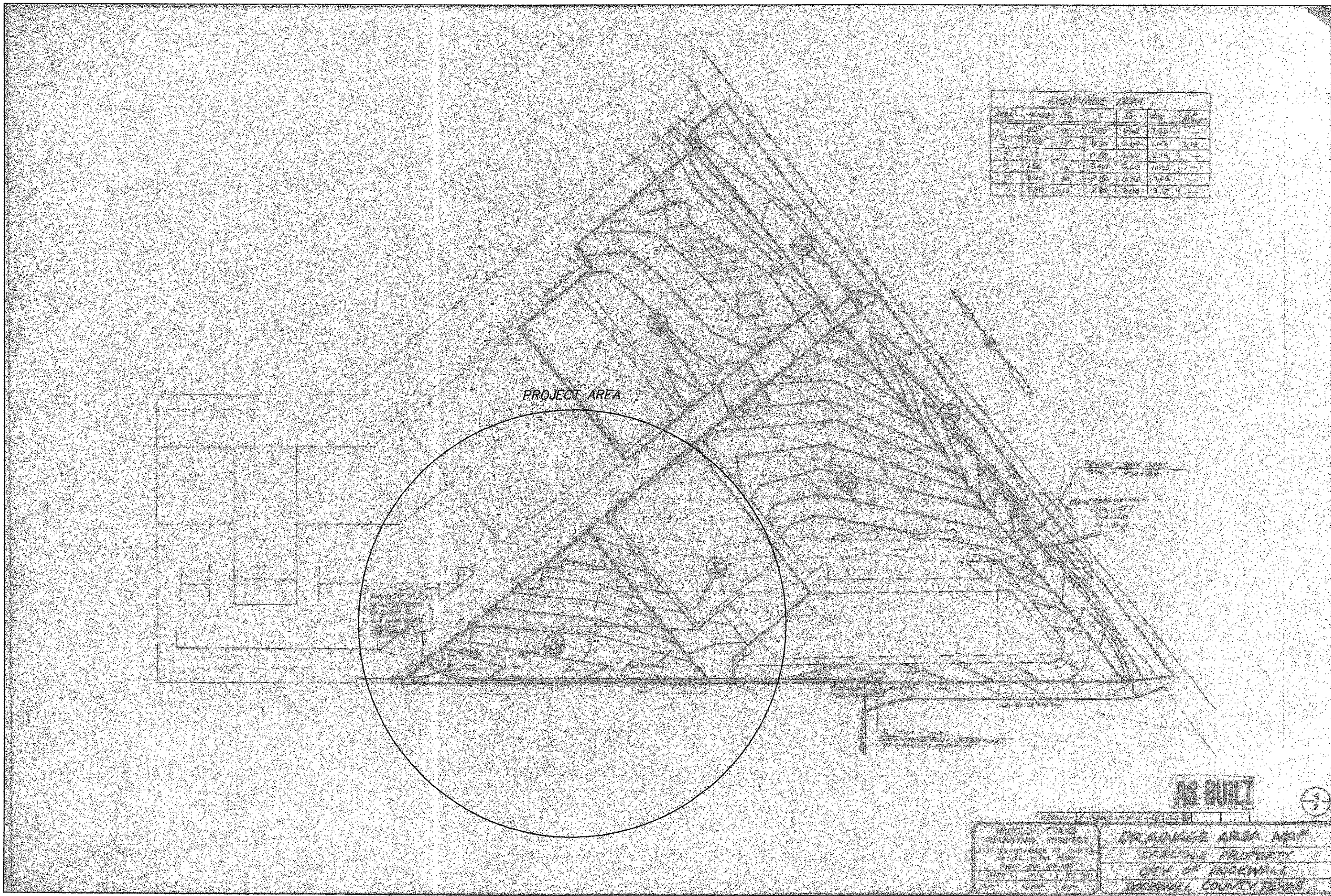


THE PROPOSED GRADING MODIFICATIONS HAVE BEEN DESIGNED AND VERIFIED AGAINST THE ORIGINAL DRAINAGE AREA MAP FOR THE DEVELOPMENT DATED 12-3-88 AS PREPARED BY HAROLD L. EVANS AND ARE IN CONFORMANCE TO THE ORIGINAL DESIGN. NO ALTERATIONS HAVE BEEN MADE TO THE ORIGINAL DRAINAGE AREA DEFINITIONS. IMAGE OF ORIGINAL DRAINAGE AREA MAP IS SHOWN BELOW.



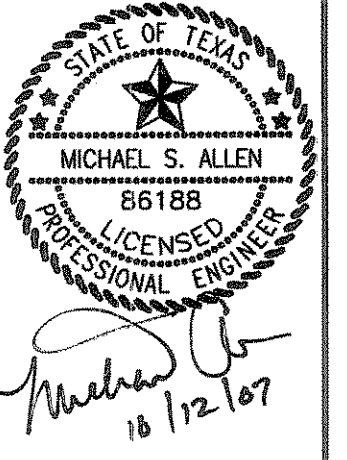
LEGEND	
	PROPOSED CONTOURS
	EXISTING CONTOURS

NOTE:
REFER TO ARCHITECTURAL PLANS FOR RAMPING AND RETAINING WALL DETAILS



ORIGINAL DRAINAGE AREA MAP
N.T.S.

No.	Date	Revisions	App.



ROCKWALL-RETAIL CENTER
ROCKWALL, TEXAS

GRADING AND DRAINAGE PLAN

REVISION
OCT 12 2007
CITY OF ROCKWALL ENGINEERING DEPT.

APPROVED FOR
CONSTRUCTION
SEP 28 2007
City of Rockwall Engineering Dept.
City Engineer: *[Signature]*

Scale: 1"=20'
Designed by: MSA
Drawn by: MSA
Checked by: MSA
Date: SEPTEMBER 14, 2007
Project No. 091-001