

INTERSTATE HIGHWAY 30
300' R.O.W. PER PLAT

CONNECT TO EXISTING 16" WATER MAIN
INSTALL 16"x12" TAPPING SLEEVE, 1-12" VALVE
STA 0+00 LINE A

BLACKLAND V. 137, P. 84
V. 137, P. 85

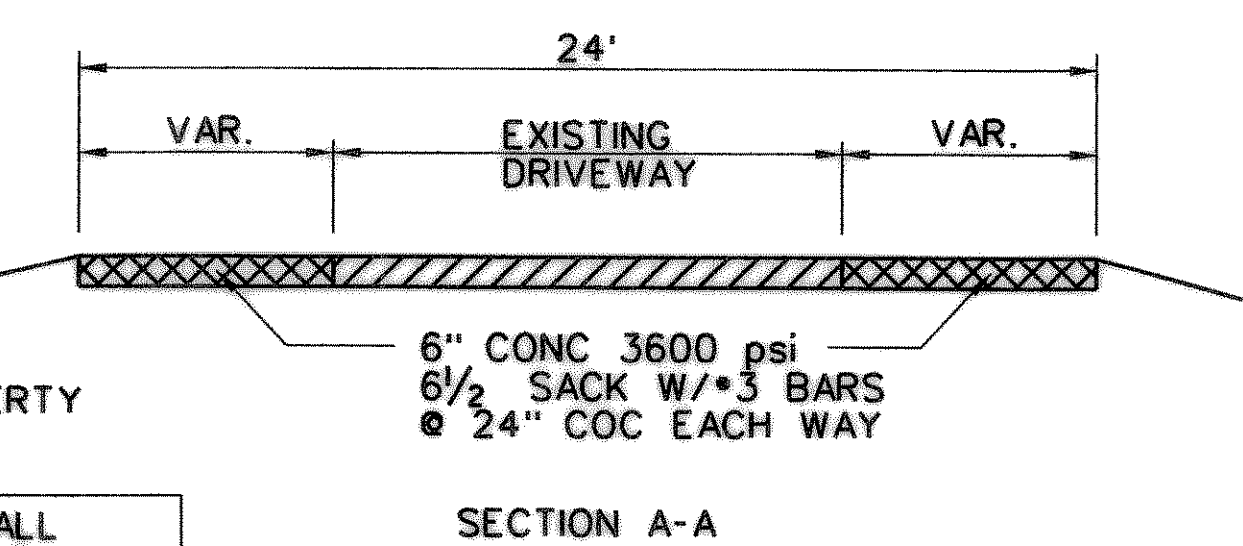
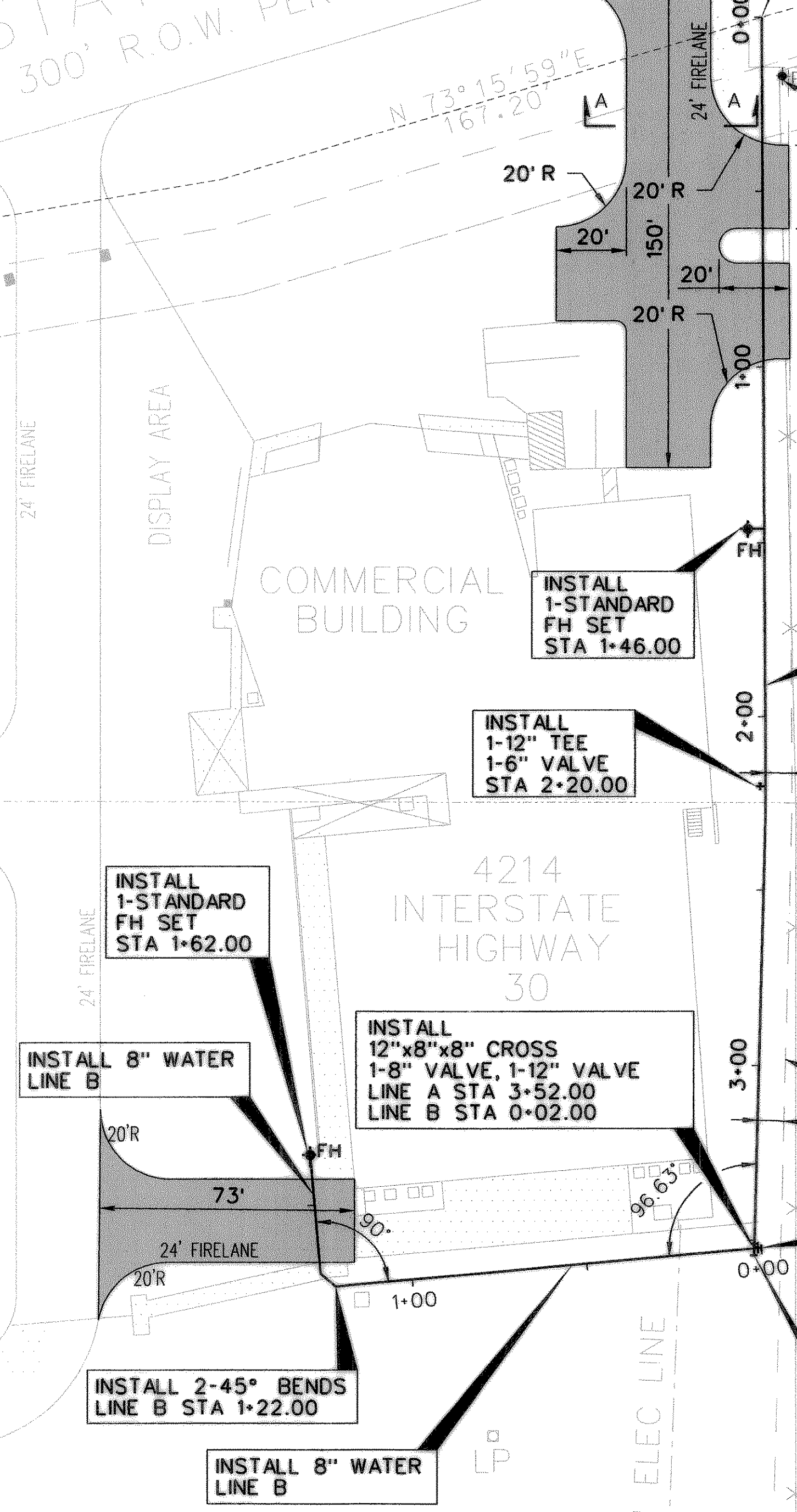
12.4438 ACRES
LEE W. & HELEN RHOADES
TO
THE CAMBRIDGE COMPANIES, INC.
VOL. 101, PG. 795

A. HANNA SURVEY A-99
N.M. BULLARD SURVEY A-24

5.00 ACRES
MAX SCHEID
TO
GASTON &
GASTON AUCTIONEERS, INC.
VOL. 137, PG. 832

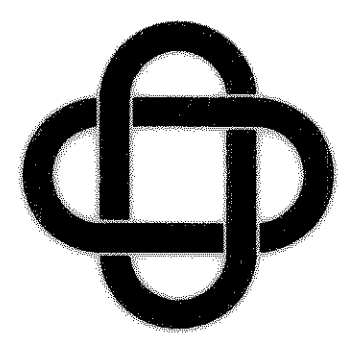
COMMERCE STREET
60' R.O.W. PER CAB. B, SLIDE 323

7.16 ACRES
5.00 ACRES
ROCKWALL CHURCH OF CHRIST
TO
ROCKWALL CHURCH OF CHRIST,
CHARTER #. 749837
VOL. 229, PG. 351
R.P.R.R.C.T.



- NOTE:
1. WATER LINE INSTALLATION SHALL INCLUDE SAWCUT OF EXISTING PAVEMENT. REPAIR OF EXISTING PAVEMENT MUST INCLUDE A PAVEMENT STRUCTURE SIMILAR TO THE EXISTING PAVEMENT.
 2. WATER LINE PIPE SHALL BE CLASS 200 PVC PIPE.
 3. MINIMUM BENDING RADIUS FOR WATER LINE SHALL BE 300'.
 4. PAVEMENT TO BE 6" - 3600psi CONCRETE - 6 1/2 SACK

| DATE | BY | REV | REVISION |
|------|----|-----|----------|
| | | | |
| | | | |
| | | | |



ERIC L. DAVIS
ENGINEERING, INC.
425 Pinson Road Ste. G
Forney, Texas 75126
972/564-0592 Fax 972/564-6523
E-Mail ericdavis@eidengineering.com

WATER LINE PLAN
ROCKWALL RECREATIONAL ADDITION
CITY OF ROCKWALL, ROCKWALL CO. TEXAS

| | |
|-------------|--|
| DEVELOPER: | |
| JOB NO.: | |
| DRAWN BY: | |
| CHECKED BY: | |
| DATE: | |

SCALE: 1" = 30'
SHEET 02 OF 02

RECORD DRAWING

SHEET 2