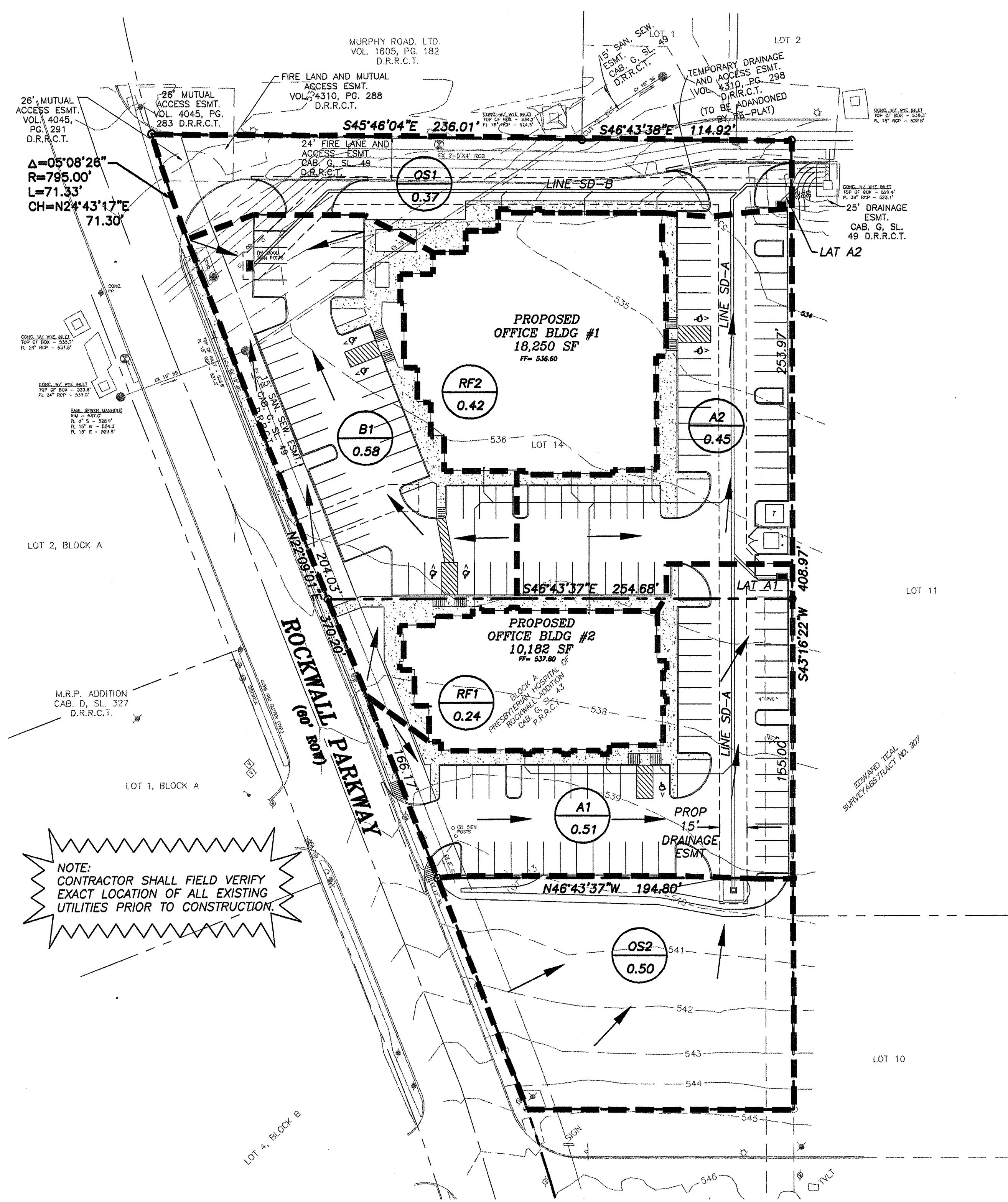
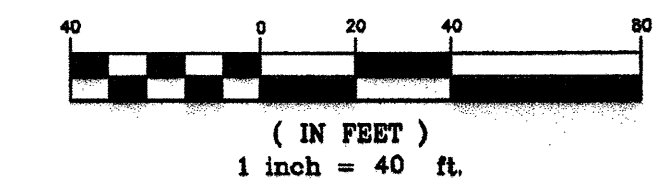


GRAPHIC SCALE



NOTE:
CONTRACTOR SHALL FIELD VERIFY
EXACT LOCATION OF ALL EXISTING
UTILITIES PRIOR TO CONSTRUCTION

LEGEND

- DRAINAGE AREA BOUNDARY
- STORM INLET NO
- DRAINAGE AREA NO
- DRAINAGE AREA (AC)
- DRAINAGE FLOW ARROW
- PROPOSED CATCH BASIN
- PROPOSED CURB INLET
- PROPOSED STORM DRAIN MANHOLE

POST DEVELOPMENT RUNOFF CALCULATIONS

AREA No.	(Ac.)	'c'	INLET TIME (min)	I(100)	Q(100)
A1	0.51	0.9	10	9.8	4.50
A2	0.45	0.9	10	9.8	3.97
B1	0.58	0.9	10	9.8	5.12
OS1	0.37	0.9	10	9.8	3.26
OS2	0.5	0.9	10	9.8	4.41
RF1	0.24	0.9	10	9.8	2.12
RF2	0.42	0.9	10	9.8	3.70

REFERENCE SHEET C2.1 FOR GENERAL NOTES

PRIMARY BENCHMARK:
CITY OF ROCKWALL GPS MONUMENT R017 - STANDARD 3 1/4" ALUMINUM CAP +/- 250' EAST OF HORIZON ROAD, 3' SOUTH OF NORTH CURB OF MEDIAN, RALPH HALL ROAD.
ELEVATION: 549.46'

PROJECT BENCHMARK:
ROCKWALL CONTROL MONUMENT ON THE NORTHWEST CORNER OF A 15' INLET, 300' SOUTH OF HORIZON ROAD ON THE WEST SIDE OF ROCKWALL PARKWAY.
ELEVATION: 536.20'

PROJECT BENCHMARK:
CUT 'X' IN CONCRETE WHICH IS +/- 65' NORTHWEST OF 1ST WYE INLET AND +/- 8' SOUTH OF 2ND LIGHT POLE FROM ROCKWALL PARKWAY ON THE NORTHEASTERLY SIDE OF DRIVEWAY.
ELEVATION: 535.11'

PROJECT BENCHMARK:
CUT 'X' IN CONCRETE WHICH IS +/- 54' SOUTH OF SANITARY SEWER MANHOLE AND +/- 100' SOUTHWEST OF 1ST WYE INLET FROM ROCKWALL PARKWAY, NEAR THE CENTERLINE OF DRIVEWAY.
ELEVATION: 533.08'

RECORD DRAWING
THIS DRAWING REFLECTS REVISIONS
AS FIELD VERIFIED BY ENGINEER AND
CONTRACTOR

Rusty Prentice DATE: 6/17/08

6/17/08

THE SEAL APPEARING ON THIS DOCUMENT WAS AUTHORIZED BY RUSTY L. PRENTICE, P.E. 100181 ON 06/17/08 ALTERATION OF A SEALED DOCUMENT WITHOUT PROPER NOTIFICATION TO THE RESPONSIBLE ENGINEER IS AN OFFENSE UNDER THE TEXAS ENGINEERING PRACTICE ACT.

PATE ENGINEERS

8150 BROOKRIVER DRIVE
SUITE S-700
DALLAS, TEXAS, 75247
PH. (214) 357-2981
FAX (214) 357-2985

JOB NO. 18280100

REVISION NUMBER DATE DESCRIPTION

**ROCKWALL MEDICAL OFFICE
LOTS 14 AND 15, BLOCK A
PRESBYTERIAN HOSPITAL OF ROCKWALL ADDN
DRAINAGE AREA MAP AND CALCULATIONS**

CITY OF ROCKWALL
ROCKWALL COUNTY, TEXAS

DRAWN BY	DESIGNED BY	CHECKED BY	DATE	SCALE	SHEET NUMBER
PATE	PATE	RLP	06/20/08	1"=40'	C3.1

STORM DRAIN	DISTANCE BETWEEN POINTS	DRAINAGE AREA		RUNOFF C'	INCREM. CA	TOTAL CA	INLET TIME (MIN.)	FLOW TIME IN SEWER	TOTAL TIME (MIN.)	DESIGN FREQ. (YR.)	INTENSITY (IN/HR)	STORMWATER RUNOFF (CFS)	FLOW IN PIPE (CFS)	Q IN ROW (CFS)	PIPE SIZE (IN)	FRICTION SLOPE (F/FT)	HEADLOSS @ CHANGE IN SECTION					ELEV. OF HYD. GRADE	TOP OF CURB ELEV.				
		INCREMENTAL AREA NO.	TOTAL AREA (AC)														V2^2/2G	V1^2/2G	Kj	KjV1^2/2G	HEAD LOSS (H)						
LINE SD-B																											
2+82.37	TO 2+26.00	56.37	B1	0.88	0.88	0.9	0.52	10.0	0.39	10.0	9.75	4.4	4.4	18	0.0023	529.21	529.07	0.00	2.88	0.13	0.00	1.25	0.00	0.13	528.34	534.72	
2+26.00	TO 1+27.56	98.44		0.58	0.58	0.9	0.52	10.3	0.57	10.9	9.71	5.1	5.1	18	0.0023	528.97	528.75	2.88	2.87	0.13	0.13	0.50	0.06	0.10	528.07		
1+27.56	TO 0+80.97	42.59	1/8 RF2	0.07	0.55	0.9	0.08	0.59	0.24	11.1	9.64	5.6	5.6	18	0.0029	528.61	528.48	2.87	3.19	0.16	0.13	0.20	0.03	0.13	528.75		
0+80.97	TO 0+42.30	38.67	1/8 RF2	0.07	0.72	0.9	0.08	0.66	11.1	11.3	9.61	6.2	6.2	18	0.0035	528.32	528.18	3.19	3.62	0.19	0.16	0.20	0.03	0.16	528.46		
0+42.30	TO 0+00.00	42.30	1/8 RF2	0.07	0.79	0.9	0.08	0.71	11.3	11.5	9.58	6.8	6.8	18	0.0042	527.98	527.81	3.62	3.86	0.23	0.19	0.20	0.04	0.19	528.16		
LINE SD-A																											
4+34.00	TO 3+08.00	68.00	OS2	0.5	0.5	0.9	0.45	0.45	10.0	0.48	10.0	9.75	4.4	4.4	18	0.0017	532.59	532.47	0.00	2.48	0.10	0.00	1.25	0.00	0.12	532.71	537.75
3+08.00	TO 2+49.77	118.23	3/8 RF1	0.144	0.644	0.9	0.13	0.58	0.61	11.1	9.69	1.3	6.8	18	0.0029	532.35	532.01	2.48	3.18	0.16	0.10	0.30	0.03	0.13	532.47		
2+49.77	TO 2+15.00	34.77	A1	0.51	1.154	0.9	0.46	1.04	11.1	11.2	9.62	4.4	10.0	18	0.0080	531.58	531.27	3.18	5.85	0.50	0.16	0.40	0.08	0.43	532.01		
2+15.00	TO 0+53.11	161.89	2/5RF1 & 3/8RF2	0.306	1.46	0.9	0.28	1.31	11.2	0.38	11.5	9.60	2.6	12.6	18	0.0144	530.62	528.29	5.65	7.14	0.79	0.50	0.30	0.15	0.64	531.27	
0+53.11	TO 0+47.23	5.88		0.79	1.46	0.9	0.28	1.31	11.5	0.01	11.6	9.55	2.6	12.6	18	0.0143	527.90	527.81	7.14	7.10	0.78	0.79	0.50	0.40	0.39	528.29	
0+47.23	TO 0+42.00	5.23	Line SD-B	0.79	2.25	0.9	0.71	2.03	11.6	0.01	11.6	9.55	6.8	19.3	24	0.0073	527.46	527.42	7.10	6.16	0.59	0.78	0.30	0.24	0.35	527.81	
0+42.00	TO 0+16.35	26.65		0.45	2.25	0.9	0.71	2.03	11.6	0.07	11.6	9.55	6.8	19.3	24	0.0073	527.13	526.93	6.16	6.16	0.59	0.59	0.50	0.29	0.29	527.42	
0+16.35	TO 0+00.00	16.35	A2	0.45	2.7	0.9	0.41	2.43	11.6	0.03	11.7	9.54	3.9	23.2	24	0.0105	526.26	526.10	6.16	7.38	0.85	0.59	0.30	0.18	0.67	528.93	
LATERAL A1																											
0+28.89	TO 0+12.00	17.89	A1	0.51	0.51	0.9	0.46	0.46	10.0	0.12	10.1	9.75	4.5	4.5	18	0.0018	532.14	532.14	0.00	2.63	0.10	0.00	1.25	0.00	0.12	532.26	535.45
0+12.00	TO 0+00.00	12.00		0.51	0.51	0.9	0.46	0.46	10.1	0.08	10.2	9.74	4.5	4.5	18	0.0018	532.04	532.01	2.63	2.63	0.10	0.10	0.50	0.05	0.10	532.14	
LATERAL A2																											
0+13.45	TO 0+00.00	13.45	A2	0.45	0.45	0.9	0.41	0.41	10.0	0.10	10.1	9.75	3.9	3.9	18	0.0014	526.95	526.93	0.00	2.23	0.08	0.00	1.25	0.00	0.10	527.05	534.14

X:\projects\18280100\dwg\18280100-DAT1.dwg, 6/17/2008 12:15:09 PM, TEL_SAD1