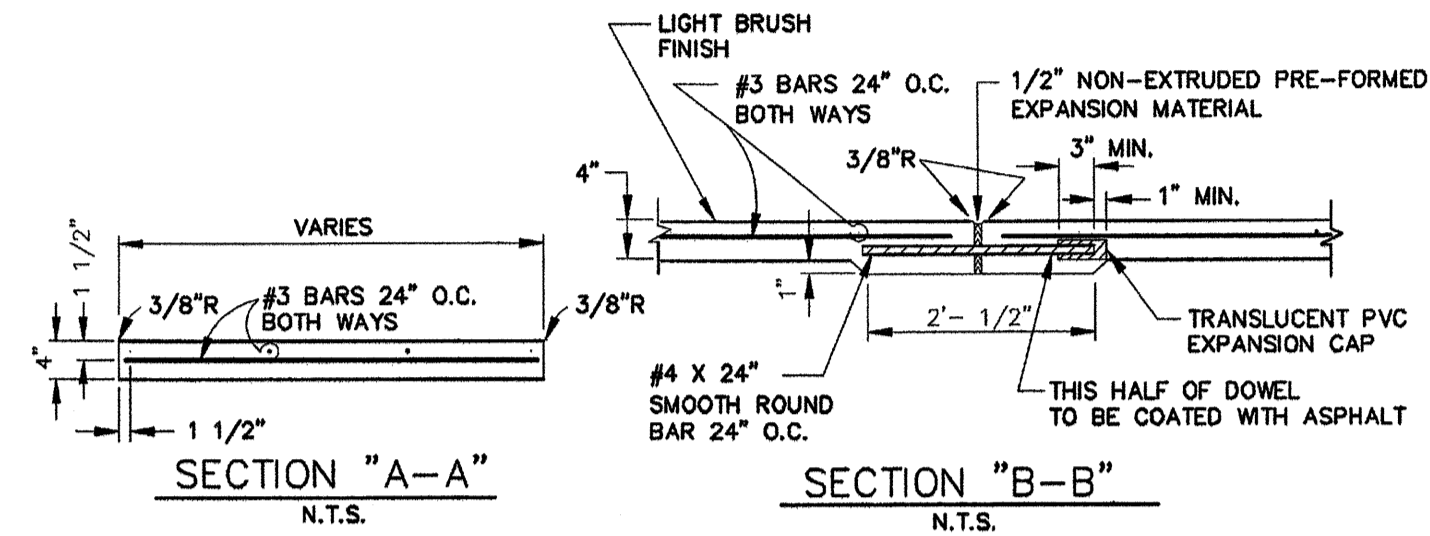
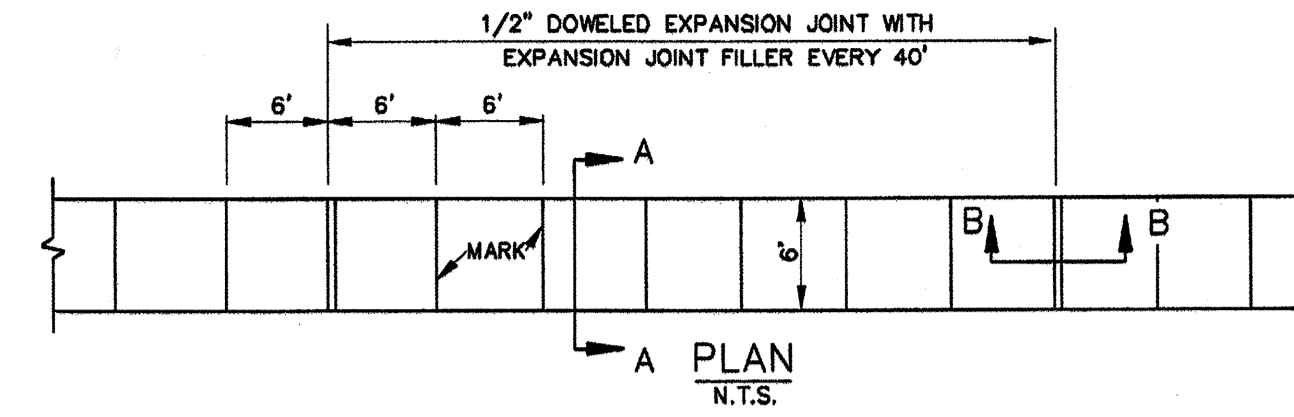
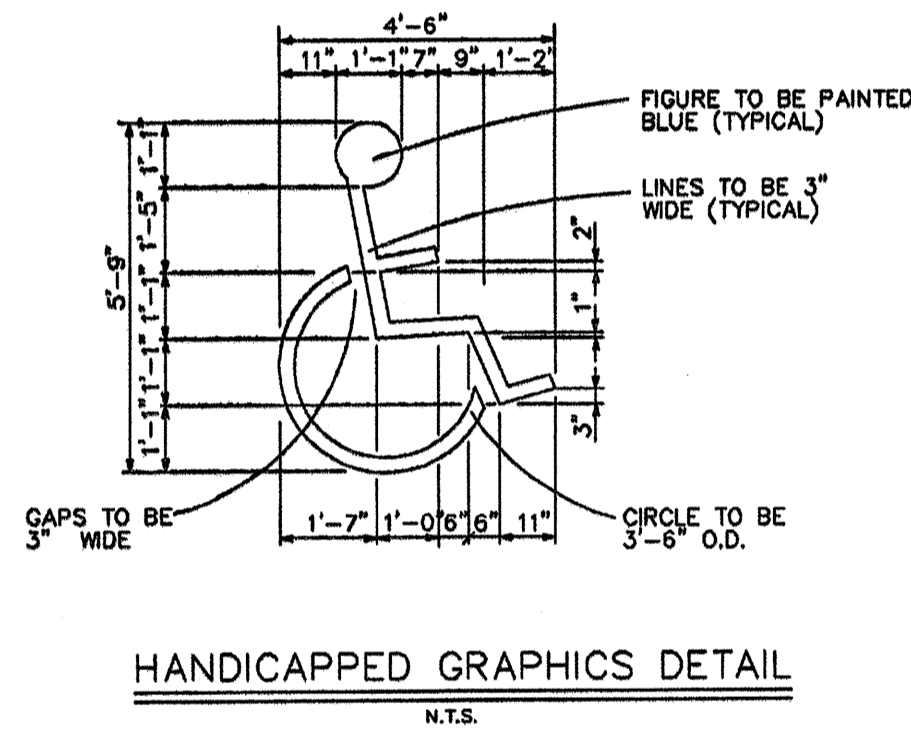
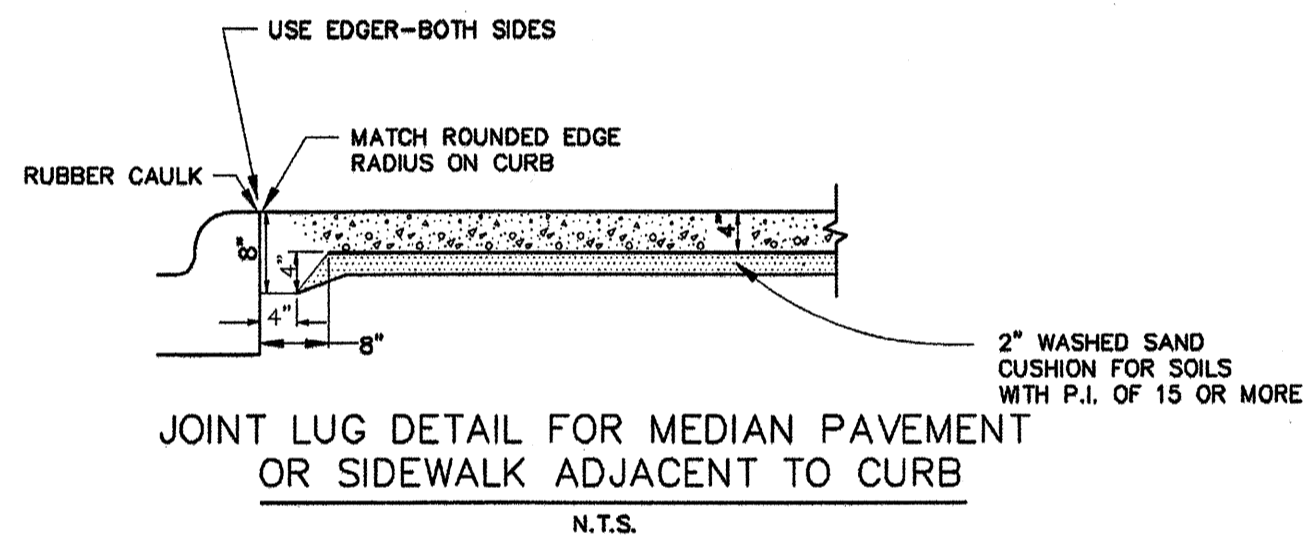


NOTE:
1. CONTRACTOR SHALL USE NCTCOG (3rd EDITION) FOR ALL JOINTS AND STREET HEADERS.

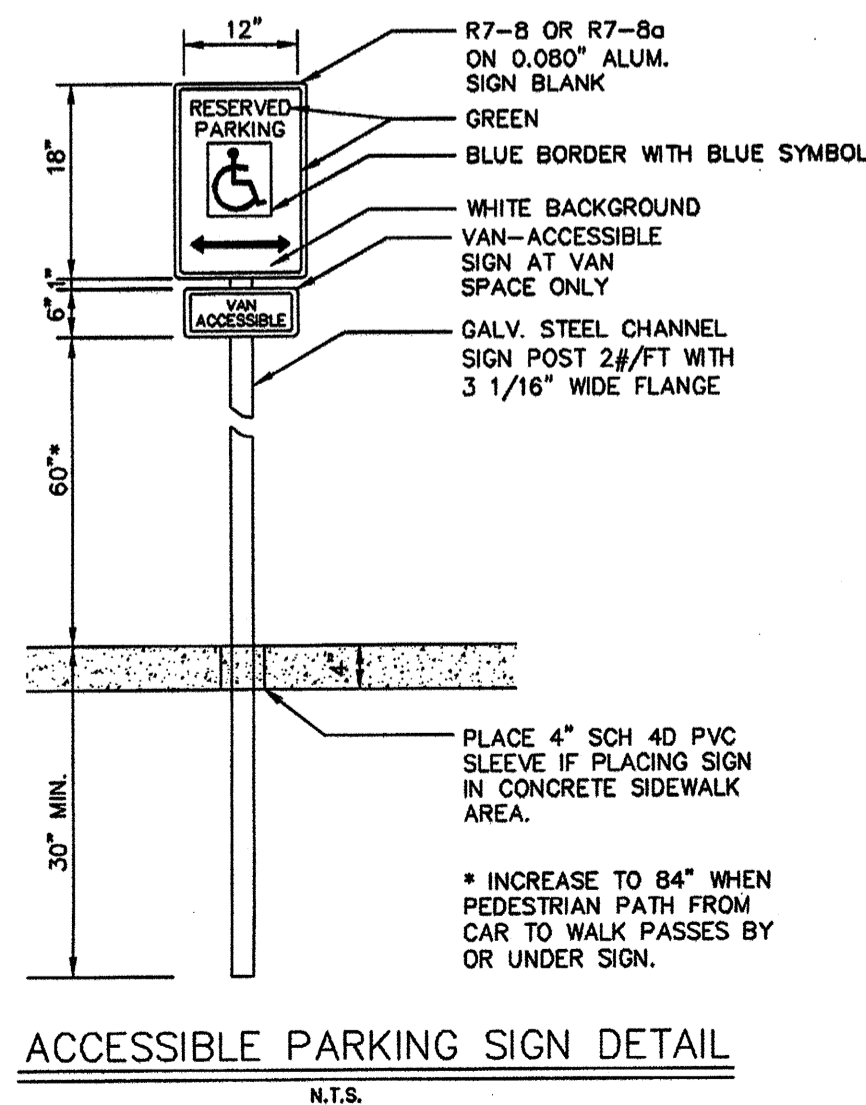


NOTE:
1. REFER TO NCTCOG STANDARD SPECIFICATION ITEM 8.3. FOR ALTERNATE REINFORCEMENT.
2. CROSS SLOPE OF SIDEWALK SHALL BE $\pm 1/8$ " PER FT. MIN. TO $\pm 1/4$ " PER FT. MAX.
3. SIDEWALK WIDTH MAY VARY.
4. SIDEWALK SHALL BE CLASS "A" CONCRETE UNLESS OTHERWISE SPECIFIED BY OWNER.
5. ALL HONEYCOMB IN BACK OF CURB TO BE TROWEL-PLASTERED BEFORE POURING SIDEWALK.
6. LUG MAY BE FORMED BY SHAPING SUBGRADE TO APPROXIMATE DIMENSIONS SHOWN.

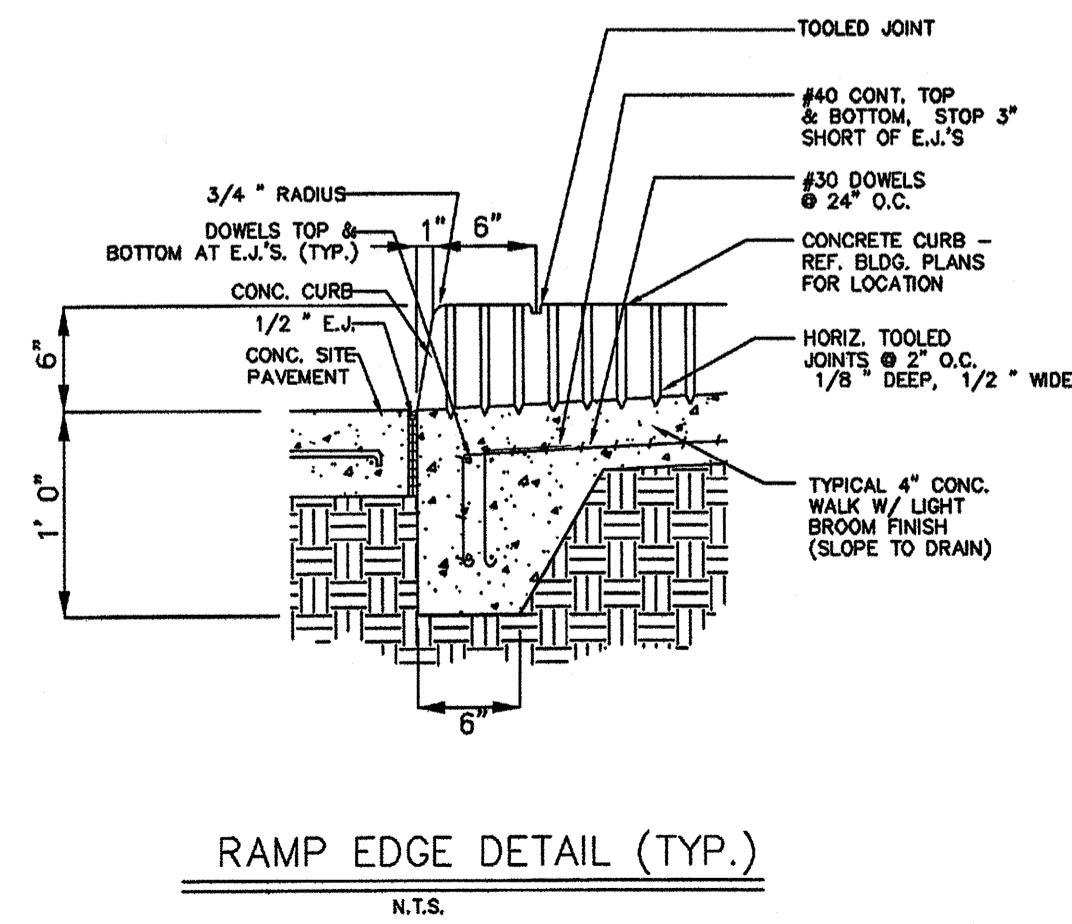
REINFORCED CONCRETE SIDEWALK
N.T.S.



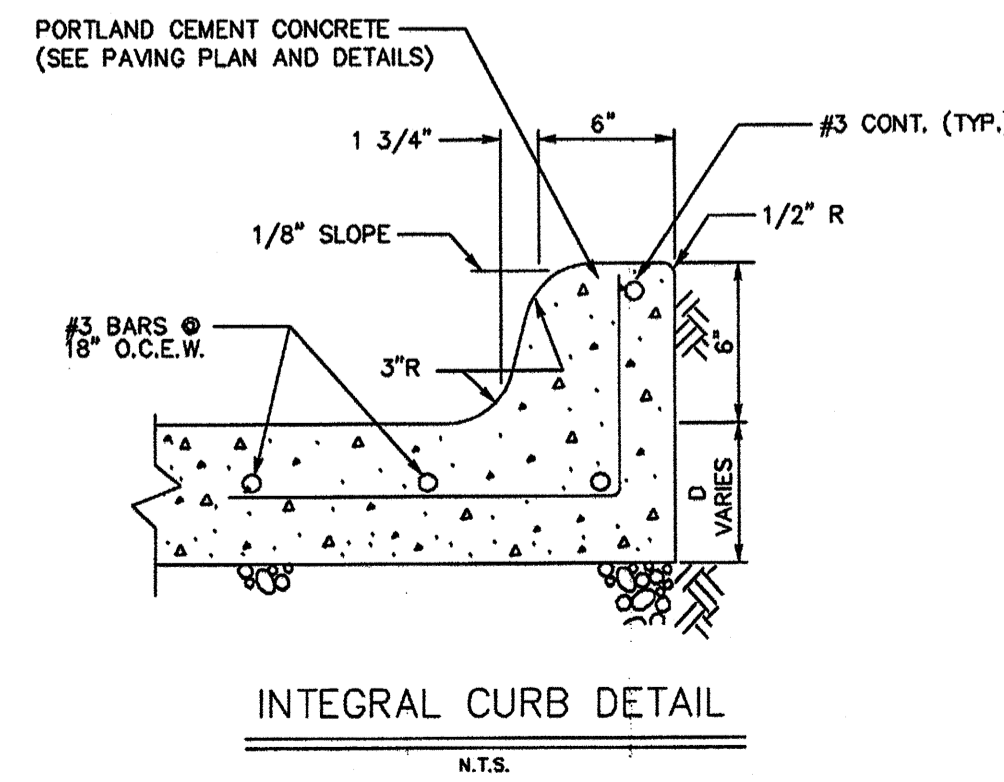
HANDICAPPED GRAPHICS DETAIL
N.T.S.



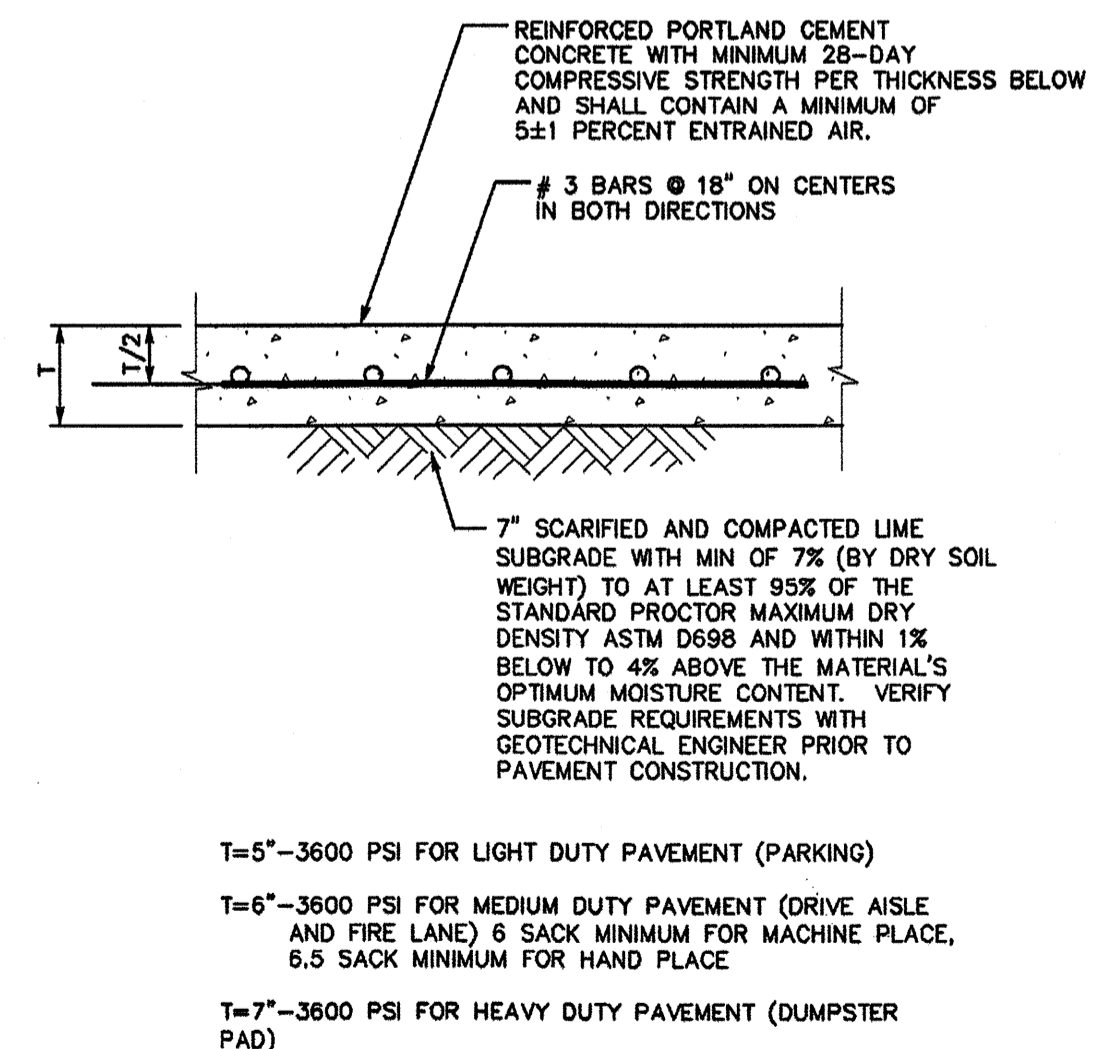
ACCESSIBLE PARKING SIGN DETAIL
N.T.S.



RAMP EDGE DETAIL (TYP.)
N.T.S.



INTEGRAL CURB DETAIL
N.T.S.



T=5"-3600 PSI FOR LIGHT DUTY PAVEMENT (PARKING)
T=6"-3600 PSI FOR MEDIUM DUTY PAVEMENT (DRIVE AISLE AND FIRE LANE) 6 SACK MINIMUM FOR MACHINE PLACE, 6.5 SACK MINIMUM FOR HAND PLACE
T=7"-3600 PSI FOR HEAVY DUTY PAVEMENT (DUMPSTER PAD)

NOTE: REFER TO THE PROJECT GEOTECHNICAL REPORT, PAVING PLAN AND NOTES, AND NCTCOG STANDARD DETAILS AND SPECIFICATIONS FOR ADDITIONAL PAVEMENT AND SUBGRADE SPECIFICATIONS.

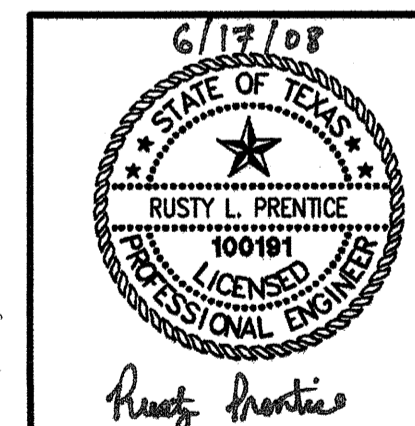
ON-SITE CONCRETE PAVING SECTION
N.T.S.

GENERAL PAVING NOTES:

1. REINFORCED CONCRETE PAVEMENT:
 - A. ALL CURBS SHALL BE PLACED INTEGRAL WITH PAVEMENT UNLESS OTHERWISE APPROVED BY THE OWNER.
 - B. CURBS SHALL MEET THE SAME COMPRESSIVE STRENGTH AS SPECIFIED FOR THE PAVEMENT.
 - C. BAR LAPS SHALL BE 30 DIAMETERS.
 - D. REINFORCING BARS SHALL BE SUPPORTED BY CHAIRS OR OTHER DEVICES APPROVED BY THE OWNER.
 - E. JOINTS IN CONCRETE SHOULD NOT EXCEED 30 FEET.
 - F. CONSTRUCTION JOINTS SHALL BE IN ACCORDANCE WITH CURRENT PORTLAND CEMENT ASSOCIATION GUIDELINES.
2. SUBGRADE: 7" SCARIFIED AND COMPACTED LIME SUBGRADE WITH MIN. OF 7% LIME (BY DRY SOIL WEIGHT) TO AT LEAST 95% OF THE STANDARD PROCTOR MAXIMUM DRY DENSITY ASTM D698 AND WITHIN THE 1% BELOW TO 4% ABOVE THE MATERIAL'S OPTIMUM MOISTURE CONTENT. VERIFY SUBGRADE REQUIREMENTS WITH GEOTECHNICAL ENGINEER PRIOR TO PAVEMENT CONSTRUCTION.
3. ALL CONSTRUCTION SHALL ADHERE TO RECOMMENDATIONS IN THE GEOTECHNICAL REPORT ISSUED FOR THIS SITE. CONTRACTOR IS RESPONSIBLE TO OBTAIN A CURRENT COPY FROM THE PROJECT GEOTECHNICAL ENGINEER FOR BIDDING AND CONSTRUCTION ACTIVITIES.

PROJECT GEOTECHNICAL ENGINEER:
RONE ENGINEERING
8808 AMBASSADOR ROW
DALLAS, TEXAS 75247
PH: (214) 630-3745
CONTACT: MARK D. GRAY, P.E.
REPORT NO. 08-13960

RECORD DRAWING
THIS DRAWING REFLECTS REVISIONS AS FIELD VERIFIED BY ENGINEER AND CONTRACTOR
DATE: 4/4/09



THE SEAL APPEARING ON THIS DOCUMENT WAS AUTHORIZED BY RUSTY L. PRENTICE, P.E. 100191 ON 06/17/08 ALTERATION OF A SEALED DOCUMENT WITHOUT PROPER NOTIFICATION TO THE RESPONSIBLE ENGINEER IS AN OFFENSE UNDER THE TEXAS ENGINEERING PRACTICE ACT.

PATE ENGINEERS

8150 BROOKRIVER DRIVE
SUITE S-700
DALLAS, TEXAS, 75247
PH. (214) 357-2981
FAX (214) 357-2985

REVISION NUMBER DATE DESCRIPTION
ROCKWALL MEDICAL OFFICE
LOTS 14 AND 15, BLOCK A
PRESBYTERIAN HOSPITAL OF ROCKWALL ADDN
ON-SITE DETAILS

CITY OF ROCKWALL ROCKWALL COUNTY, TEXAS			
DRAWN BY	DESIGNED BY	CHECKED BY	DATE
PATE	PATE	RLP	06/2008
SCALE	SHEET NUMBER		
NTS	C2.2		