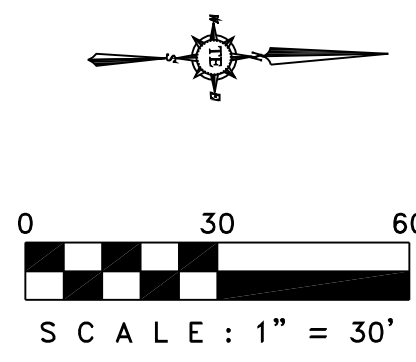


MEDICAL OFFICES DEVELOPMENT

1.46 ACRES PORTION OF
 LOT 2, BLOCK "A" ROCKWALL ASSISTED LIVING ADDITION
 CITY OF ROCKWALL, ROCKWALL COUNTY, TX



DIMENSION GENERAL NOTES:

- ALL DIMENSIONS ARE MEASURED TO FACE OF CURB AS SHOWN. CONTACT ENGINEER/ARCHITECT IF THERE IS ANY DISCREPANCIES IN THE DIMENSION.
- REFER TO ARCHITECTURAL FLOOR PLAN FOR EXACT BUILDING DIMENSIONS.
- MONUMENT SIGN SHALL BE BY SEPARATE PERMIT. NO SIGNAGE TO BE IN OR OVERHANG INTO A EASEMENT.

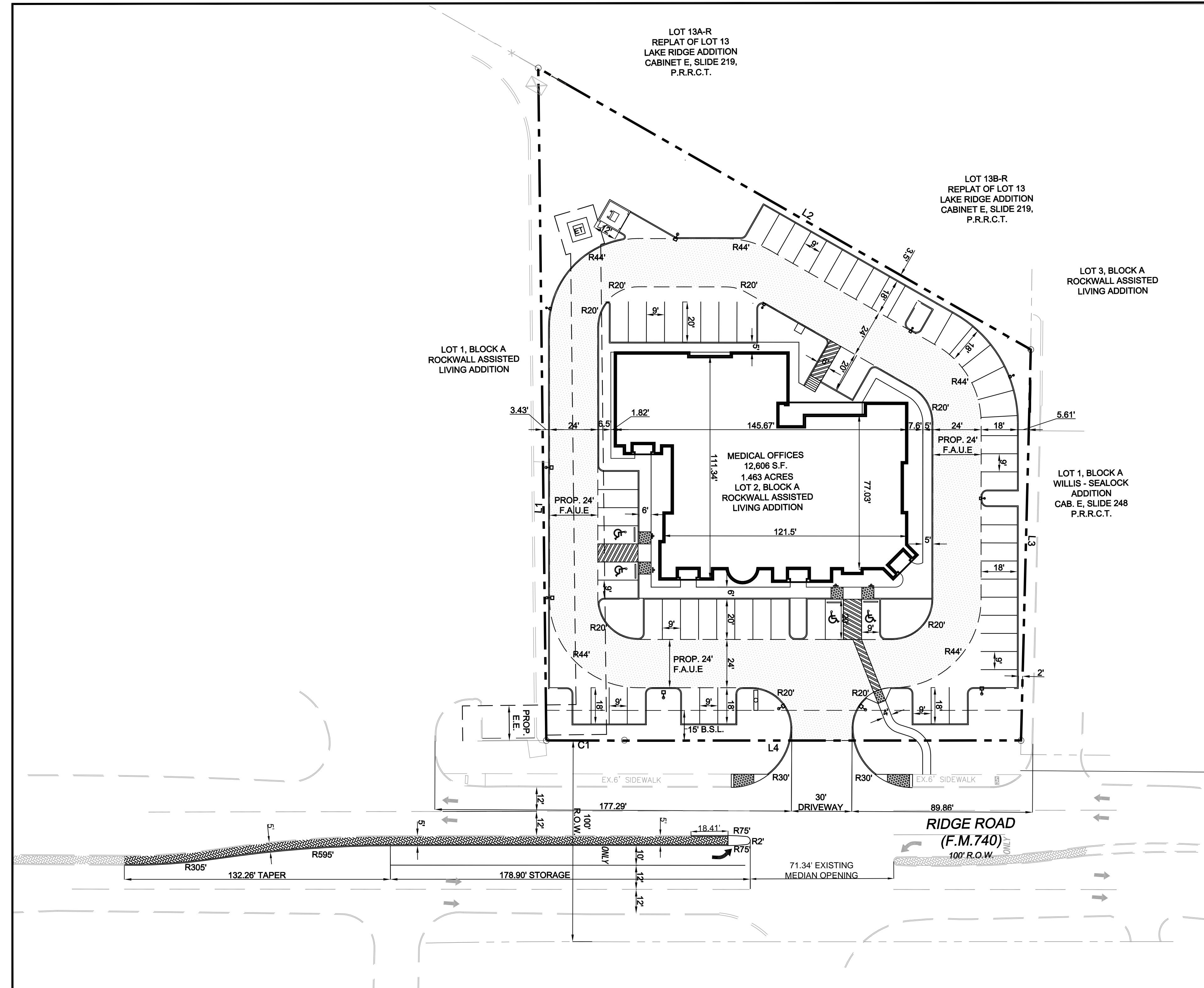
BOUNDARY LINE DATA		
LINE NO.	BEARING	DISTANCE
L1	N 74°09'28" W	334.28'
L2	N 46°16'17" E	282.04'
L3	S 72°02'12" E	194.40'
L4	S 16°31'13" W	196.97'

BOUNDARY LINE CURVE DATA		
CURVE NO.		
C1	RADIUS	3874.83'
	LENGTH	39.13'
	DELTA	0°34'43"
	CHORD BEARING	S16°37'56"W
	CHORD DISTANCE	39.13'

LEGEND	
UTILITY EASEMENT	U.E.
SANITARY SEWER EASEMENT	S.E.
DRAINAGE EASEMENT	D.E.
WATERLINE EASEMENT	W.E.
SEWER CLEAN OUT	C.O.
GAS METER	GM
ELECTRICAL TRANSFORMER	ET
FIRE HYDRANT	FH
SANITARY SEWER MANHOLE	SSMH
STORM SEWER MANHOLE	STMMH
BUILDING SETBACK	B.S.
LANDSCAPE SETBACK	L.S.
PRESSURE REDUCING VALVE	PRV
PROP. FIRELANE, ACCESS, WATER LINE & DRAINAGE ESMT.	F.A.W.D.
FIRE DEPARTMENT CONNECTION	F.D.C.
POST INDICATOR VALVE	PIV
PEDSTRIAN ACCESS ESMT.	P.A.E.

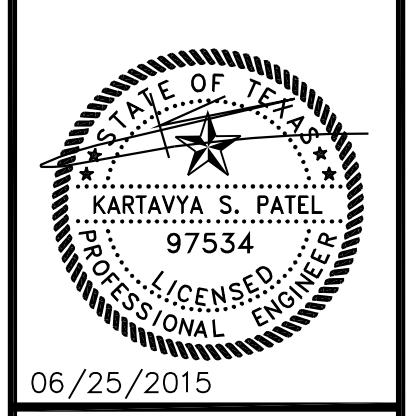
ASBUILT DRAWINGS:
 TO THE BEST OF OUR KNOWLEDGE TRIANGLE ENGINEERING LLC., HEREBY STATES THAT THIS PLAN IS ASBUILT. THE INFORMATION PROVIDED IS BASED ON SURVEYING AT THE SITE AND INFORMATION PROVIDED BY THE CONTRACTOR.

KARTAVYA S. PATEL P.E. NO. 97534



TRIANGLE ENGINEERING, LLC.
 TYPICAL FIRM # 11525
 1503 ASTORIA DRIVE, ALLEN, TX 75013
 PHONE: 214-609-9271

No.	DATE	DESCRIPTION
1	05/25/2015	FINAL ASBUILT SUBMITTAL



MEDICAL OFFICE
 3018 RIDGE ROAD
 ROCKWALL, TEXAS

SITE DIMENSION PLAN	
PROJECT No:	13-035
DATE:	06/25/2015
DRAWN BY:	KP
CHECKED BY:	KP
SHEET #	4
REVISION #	