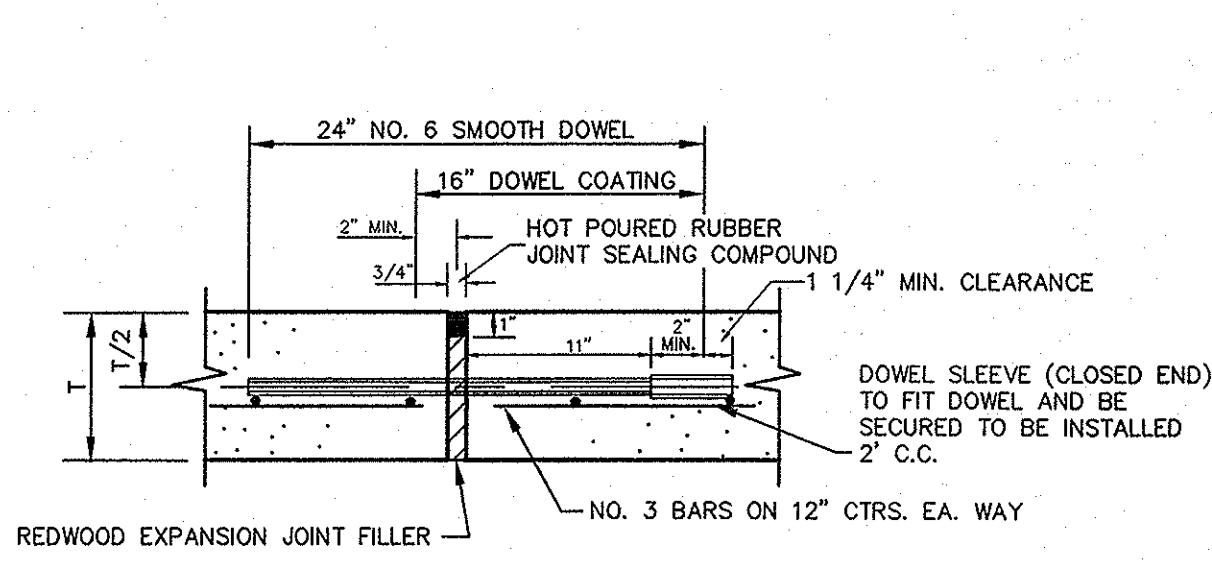
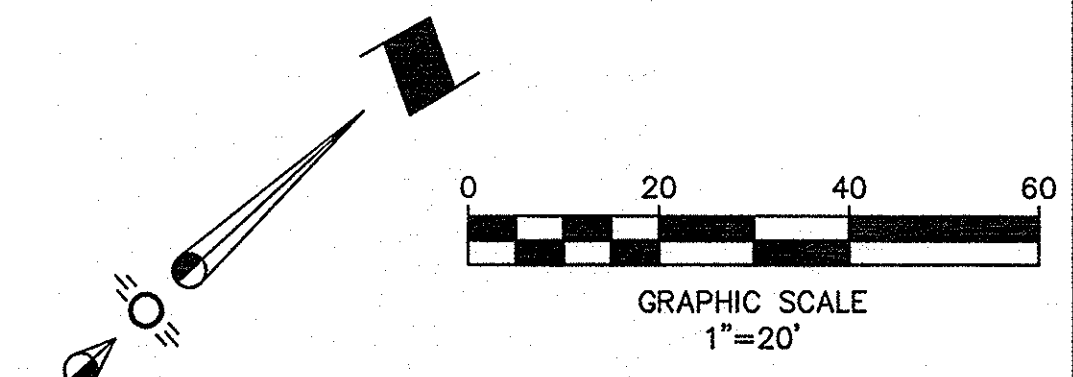


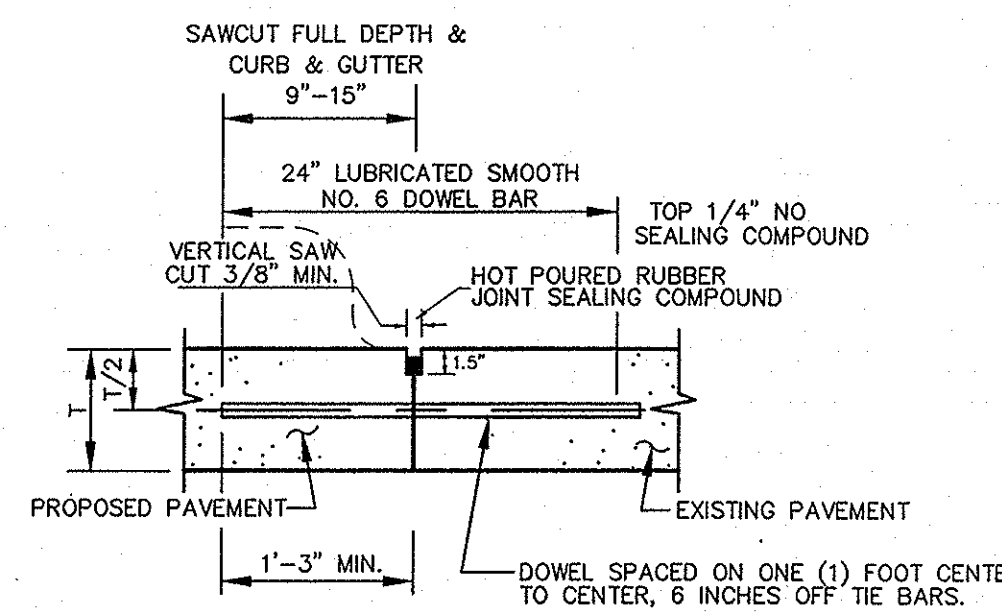
LEGEND

- EXISTING CURB
- PROPOSED CURB
- - - FULL DEPTH SAWCUT
- [Cross-hatched] 7" 4500 PSI CONCRETE PAVEMENT ON SCARIFIED AND RECOMPACTED SUBGRADE REINFORCED W/ #3 @ 12" O.C.E.W. (DUMPSTER) - MIN. 7.5 SACK MIX
- [Stippled] 6" 3600 PSI REINF. CONC. PAVEMENT ON SCARIFIED AND RECOMPACTED SUBGRADE REINFORCED W/ #3 BARS @ 12" O.C.E.W. (DRIVE AISLES) - MIN. 6.5 SACK MIX
- [Diagonal lines] 5" 3600 PSI REINF. CONC. PAVEMENT ON SCARIFIED AND RECOMPACTED SUBGRADE REINFORCED W/ #3 BARS @ 12" O.C.E.W. (PARKING) - MIN. 6.5 SACK MIX
- [Dotted] 4" 3000 PSI CONC. SIDEWALK, REINFORCED W/ #3 BARS @ 24" O.C.E.W. ON SCARIFIED AND RECOMPACTED SUBGRADE. - MIN. 5.5 SACK MIX
- BFR - BARRIER FREE RAMP



NOTE: DOWELS AND REINFORCING BARS SHALL BE SUPPORTED BY AN APPROVED DEVICE.

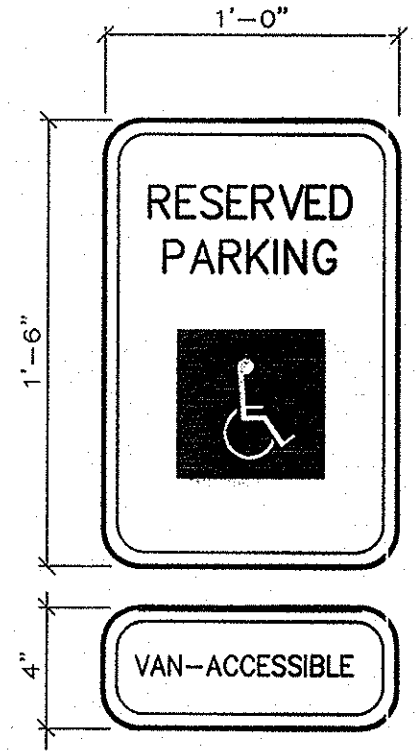
EXPANSION JOINT
N.T.S.



NOTE: DOWELS AND REINFORCING BARS SHALL BE SUPPORTED BY AN APPROVED DEVICE.

LONGITUDINAL BUTT JOINT
N.T.S.

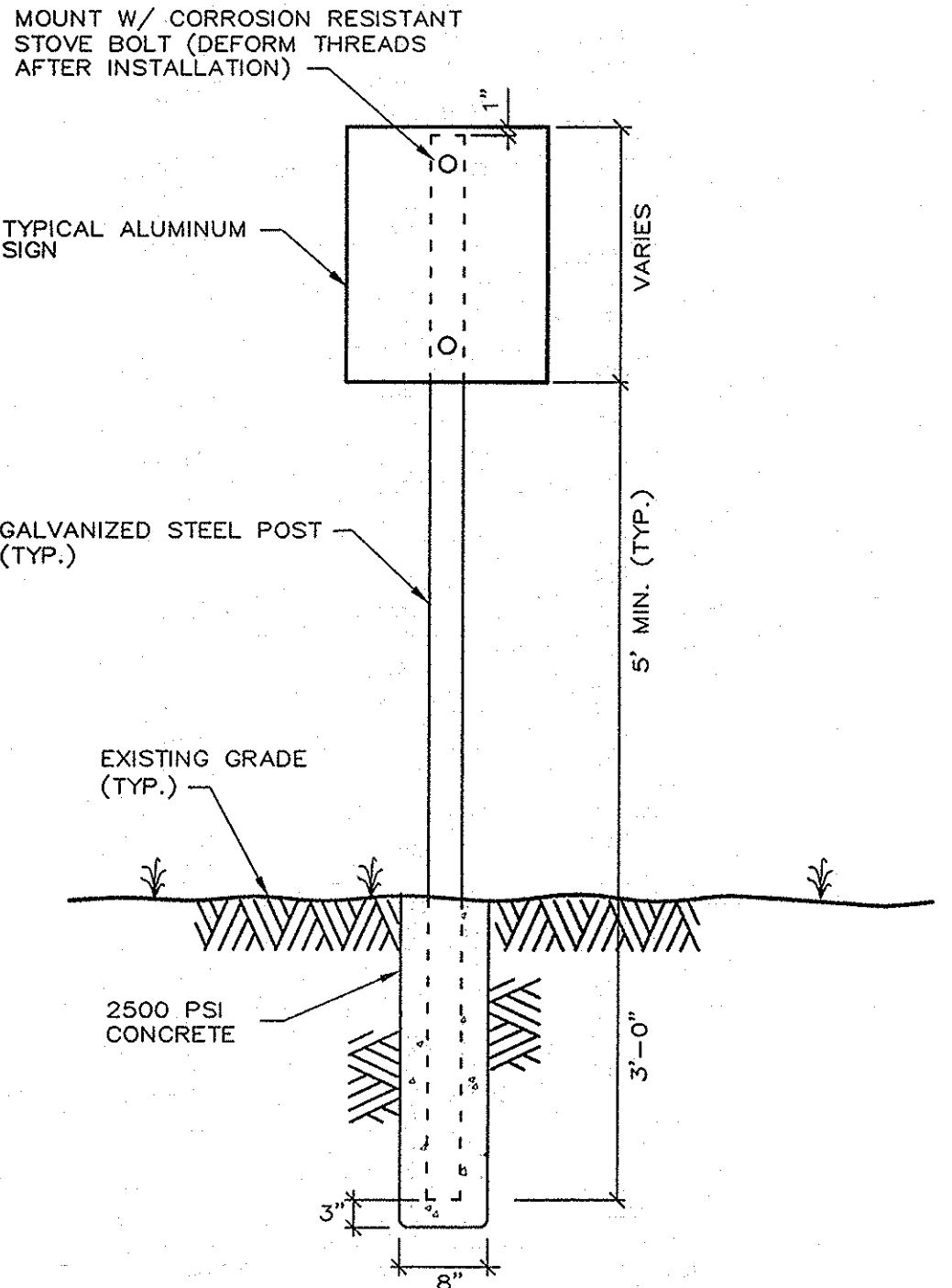
- NOTES:
- NO. 5 SMOOTH DOWEL BAR MAY BE USED IN 5 INCH AND 6 INCH PAVEMENT THICKNESS.
 - LONGITUDINAL BUTT CONSTRUCTION MAY BE UTILIZED IN PLACE OF LONGITUDINAL HINGED (KEYWAY) JOINT AT CONTRACTOR'S OPTION.
 - DOWEL BARS SHALL BE DRILLED INTO PAVEMENT HORIZONTALLY BY USE OF A MECHANICAL DRILL.
 - DRILLED BY HAND IS NOT ACCEPTABLE. PUSHING DOWEL BARS INTO GREEN CONCRETE NOT ACCEPTABLE.



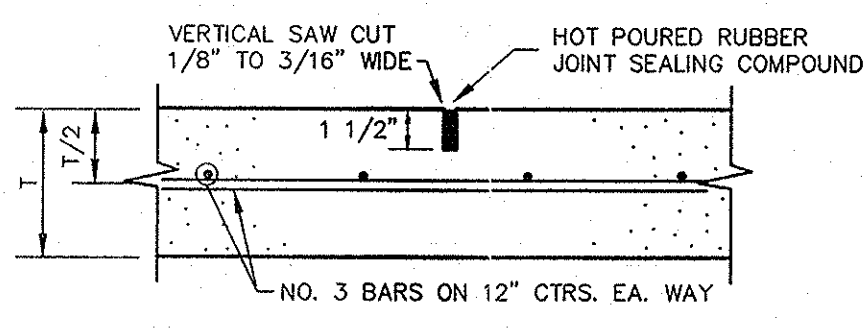
COLORS:
LETTERS AND BORDER - GREEN
SYMBOL ON BLUE BACKGROUND
SIGN BACKGROUND - WHITE

- NOTES:
- SPACING BETWEEN LETTERS, COLORS, AND PROCESSES SHALL CONFORM STANDARD HIGHWAY AND SIGN DESIGNS FOR TEXAS.
 - INSTALL WHERE INDICATED ON PLANS.
 - VAN-ACCESSIBLE SIGNAGE ON VAN SPACES ONLY.

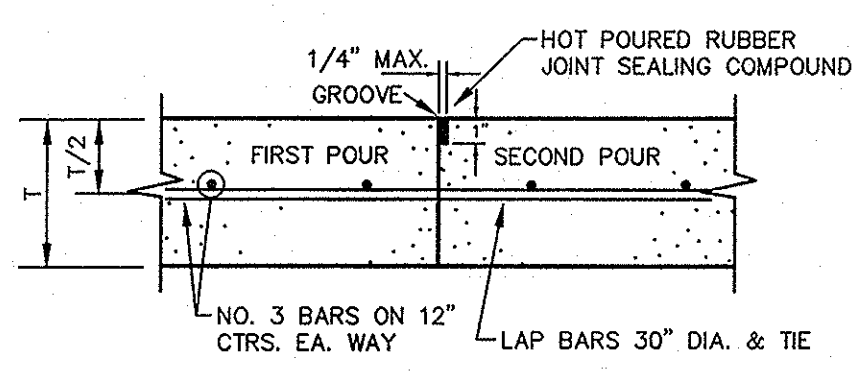
TYPICAL SIGNAGE DETAIL
N.T.S.



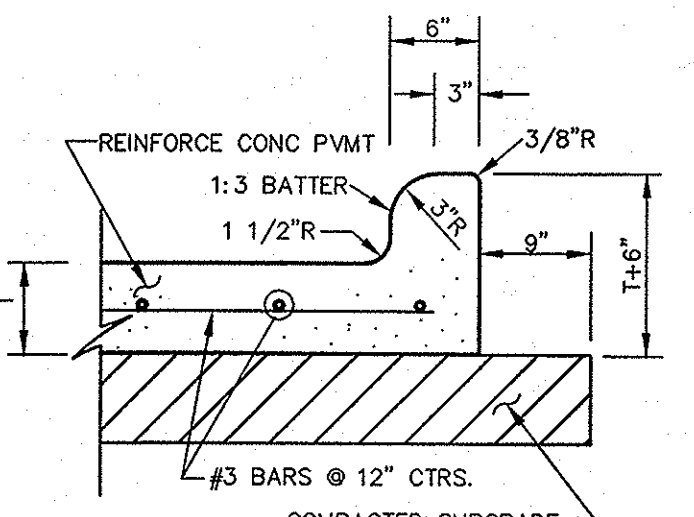
TYPICAL SIGNAGE MOUNTING DETAIL
N.T.S.



SAWED DUMMY (CONTROL) JOINT
N.T.S.



CONSTRUCTION JOINT
N.T.S.



TYPICAL PAVEMENT SECTION
N.T.S.

PAVING NOTES

- All materials and construction shall conform to the City of Rockwall and NCTCOG 3RD Edition standards, except as noted herein and approved by the City.
- The location of all utilities located on these plans are taken from existing public records. The exact location and elevation of all public utilities must be determined by the Contractor. It shall be the duty of the Contractor to ascertain whether any additional facilities other than those shown on the plans may be present.
- Contractor shall field verify both the horizontal and vertical locations of existing utilities and report any differences identified in these plans to the Engineer prior to construction. It shall be the duty of the Contractor to ascertain whether or not the locations of existing utilities shown on the plans are accurate.
- It will be the responsibility of the Contractor to protect all public utilities in the construction of this project. All manholes, cleanouts, valve boxes, fire hydrants, etc. must be adjusted to proper line and grade by the Contractor prior to and after the placing of permanent paving. Utilities must be maintained to proper line and grade during construction of this project.
- The Contractor will be responsible for coordinating with all the appropriate utility companies for the location of all utilities within the construction areas.
- The Paving Contractor shall coordinate with the Utility Contractor to insure all sleeving for irrigation has been installed prior to placement of permanent pavement.
- All paving and earthwork operations shall conform to the recommendations per the Geotechnical Report.
- Traffic Barricades will be required for Paving and Storm Sewer construction within the Public Right-Of-Way. Barricades shall conform to the installation shown in the "1980 Texas Manual Of Uniform Traffic Control Devices, "As Currently Amended, Texas Department Of Transportation.
- All dimensions are to the face of curb unless otherwise noted.

Notes:

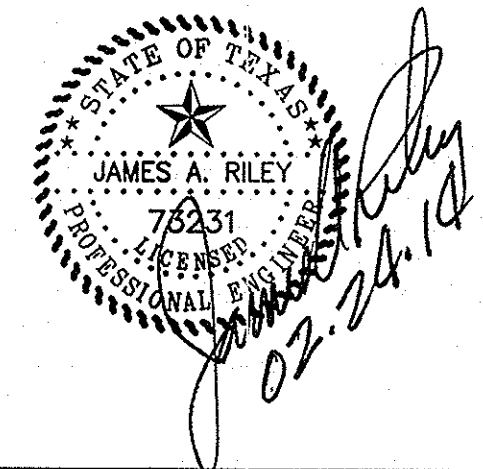
- ALL ADA ACCESSIBLE ROUTES SHALL HAVE MAXIMUM 2% CROSS SLOPES AND MAXIMUM 5% LONGITUDINAL SLOPE.
- ALL HANDICAP PARKING AND ACCESS AISLES SHALL HAVE A MAXIMUM SLOPE OF 2% IN ALL DIRECTIONS.

NOTE:
ALL DIMENSIONS ON THIS SHEET ARE TO FACE OF CURB UNLESS OTHERWISE NOTED.

RECORD DRAWING
02/24/14

NOTE:
TO THE BEST OF OUR KNOWLEDGE BROCKETTE DAVIS DRAKE, INC., HEREBY STATES THAT THIS PLAN IS AS-BUILT. THIS INFORMATION PROVIDED IS BASED ON SURVEYING AT THE SITE AND INFORMATION PROVIDED BY THE CONTRACTOR.

NOTE:
All responsibility for adequacy of the design remains with the Design Engineer. The City of Rockwall, in reviewing and releasing plans for construction, assumes no responsibility for adequacy or accuracy of design.



- BENCHMARKS:**
- BENCHMARK 1:** City of Rockwall Monument Reset #1. ELEVATION = 567.70 feet
 - BENCHMARK 2:** Square cut on south bull nose of median, 350± southeast of the intersection of Tubbs Road and F.M. 3097. ELEVATION = 520.73
 - BENCHMARK 3:** Square cut on back of curb, southwest of main entrance at Tubbs Road, 100± southwest of helicopter pad. ELEVATION = 530.78

No.	Revision	Date

PAVING PLAN

**MEDICAL OFFICE BUILDING
LOT 7, BLOCK A
PRESBYTERIAN HOSPITAL ADDITION
ROCKWALL, TEXAS**

BROCKETTE/DAVIS/DRAKE, INC.
consulting engineers
Civil & Structural Engineering - Surveying
Texas Registered Engineering Firm F-841
4144 North Central Expressway, Suite 1100
Dallas, Texas 75204
(214) 824-3647 • fax (214) 824-7064

DESIGN	DRAWN	DATE	SCALE	NOTES	FILE	NO.
JAR	DJA	05/14/13	1"=20'	BDD	C12126	C4

Copyright 2013 Brockett/Davis/Drake, Inc. All Rights Reserved.
 No part of this drawing may be reproduced, stored in a retrieval system, or used in any form or by any means, electronic, mechanical, photocopying, recording, or by any information storage and retrieval system, without the prior written authorization of Brockett/Davis/Drake, Inc. is prohibited.