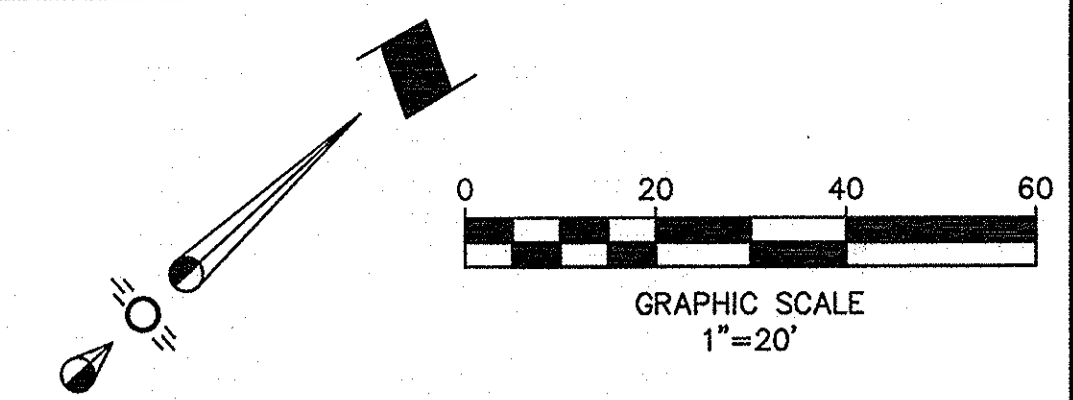
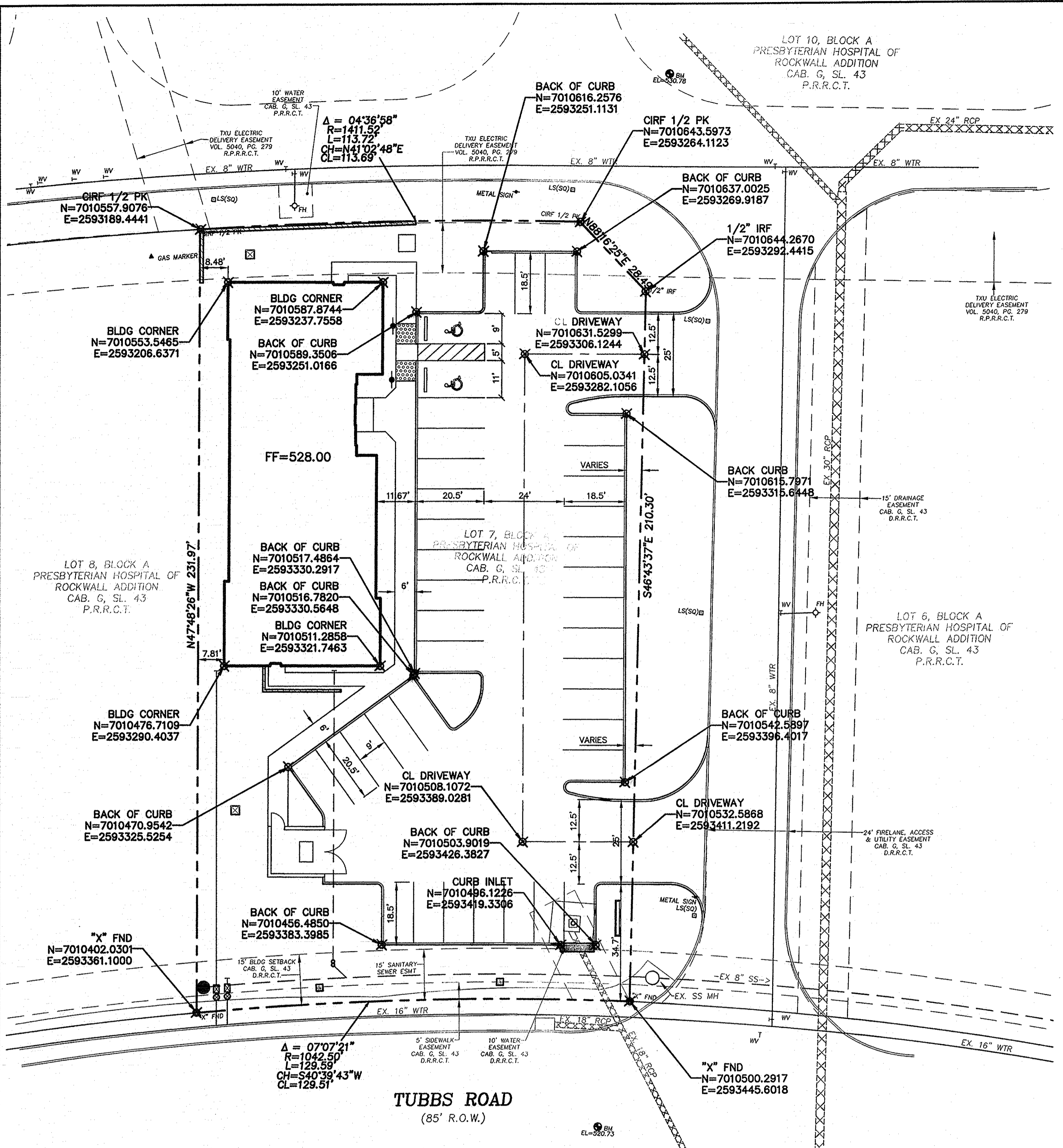


© Copyright 2013 Brockette/Davis/Drake, Inc. All Rights Reserved. This drawing is the property of Brockette/Davis/Drake, Inc. and is not to be reproduced, stored in a retrieval system, or transmitted in any form or by any means, electronic, mechanical, photocopying, recording, or by any information storage and retrieval system, without the written authorization of Brockette/Davis/Drake, Inc. is prohibited.



NOTE:
ALL DIMENSIONS AND COORDINATES ON THIS SHEET ARE TO BACK OF CURB UNLESS OTHERWISE NOTED.

Notes:
1) ALL ADA ACCESSIBLE ROUTES SHALL HAVE MAXIMUM 2% CROSS SLOPES AND MAXIMUM 5% LONGITUDINAL SLOPE.
2) ALL HANDICAP PARKING AND ACCESS AISLES SHALL HAVE A MAXIMUM SLOPE OF 2% IN ALL DIRECTIONS.

NOTE:
THE BUILDING CORNER LOCATIONS ARE BASED ON INFORMATION PROVIDED BY THE ARCHITECT. BDD TAKES NO RESPONSIBILITY FOR THE ACCURACY OF ACTUAL BUILDING CORNER LOCATIONS.

LEGAL DESCRIPTION
LOT 7, BLOCK A
PRESBYTERIAN HOSPITAL ADDITION
TO
THE CITY OF ROCKWALL, TEXAS

No. Revision	Date

DIMENSIONAL CONTROL PLAN

MEDICAL OFFICE BUILDING
LOT 7, BLOCK A
PRESBYTERIAN HOSPITAL ADDITION
ROCKWALL, TEXAS

BROCKETTE/DAVIS/DRAKE, INC.
consulting engineers
Civil & Structural Engineering • Surveying
Texas Registered Engineering Firm F-841
4144 North Central Expressway, Suite 1100
Dallas, Texas 75204
(214) 824-3647 • fax (214) 824-7064

DESIGN	DRAWN	DATE	SCALE	NOTES	FILE	NO.
JAR	DJA	05/14/13	1"=20'	BDD	C12126	C3

