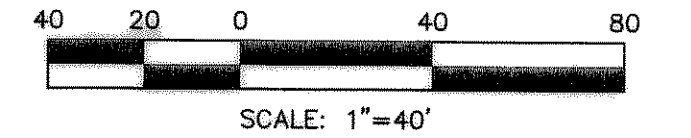
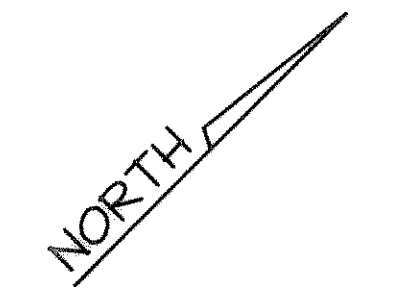


LOCATION MAP
NO SCALE

ROCKWALL LAND COMPANY, L.P.
VOL. 01375, PG. 00301
D.R.R.C.T.

CITY OF ROCKWALL, TEXAS
VOL. 747, PG. 52
D.R.R.C.T.

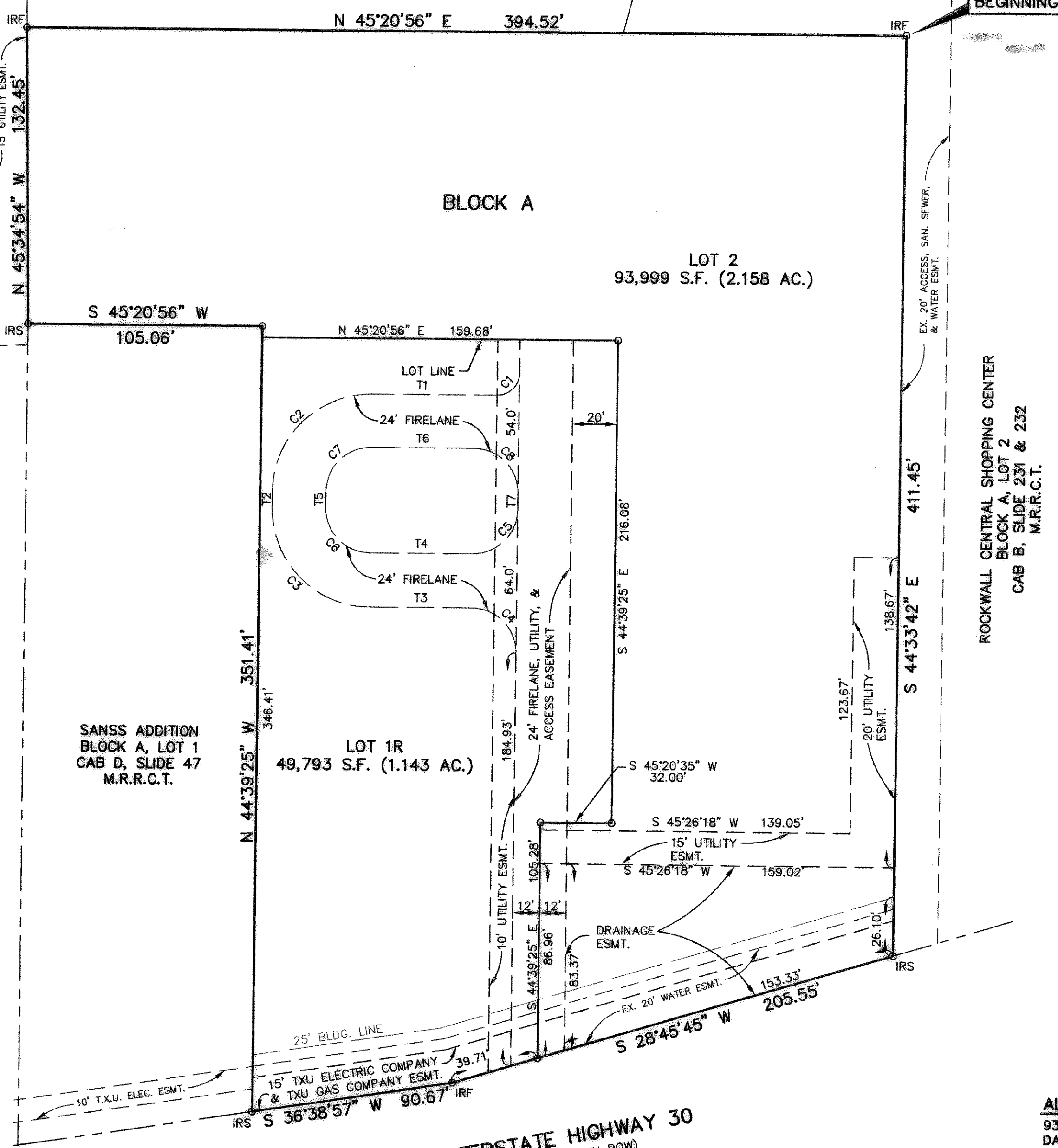


LINE TABLE

TANGENT	BEARING	LENGTH
T1	N 45°20'35" E	56.18'
T2	N 44°39'25" W	7.00'
T3	S 45°20'35" W	46.18'
T4	S 45°20'35" W	46.18'
T5	N 44°39'25" W	7.00'
T6	N 45°20'35" E	46.18'
T7	S 44°39'25" E	7.00'

CURVE TABLE

CURVE	RADIUS	DELTA	TANGENT	LENGTH	CHORD	BEARING
C1	10.00'	90°00'00"	10.00'	15.71'	14.14'	N 00°20'35" E
C2	44.00'	90°00'00"	44.00'	69.11'	62.23'	N 00°20'35" E
C3	44.00'	90°00'00"	44.00'	69.11'	62.23'	N 89°39'25" W
C4	20.00'	90°00'00"	20.00'	31.42'	28.28'	N 89°39'25" W
C5	20.00'	90°00'00"	20.00'	31.42'	28.28'	S 00°20'35" W
C6	20.00'	90°00'00"	20.00'	31.42'	28.28'	N 89°39'25" W
C7	20.00'	90°00'00"	20.00'	31.42'	28.28'	N 00°20'35" E
C8	20.00'	90°00'00"	20.00'	31.42'	28.28'	S 89°39'25" E



ROCKWALL CENTRAL SHOPPING CENTER
BLOCK A, LOT 2
CAB B, SLIDE 231 & 232
M.R.R.C.T.

LEGEND
IRS 1/2" IRON ROD SET
IRF 1/2" IRON ROD FOUND

SANSS ADDITION
BLOCK A, LOT 1
CAB D, SLIDE 47
M.R.R.C.T.

REPLAT
**NEWMAN CENTER NO. ONE
LOTS 1R & 2, BLOCK A**
3.301 ACRES / 2 LOTS ZONED C-COMMERCIAL
BEING A REPLAT OF LOT 1, BLOCK A, NEWMAN CENTER NO. ONE
JOSEPH CADLE SURVEY, ABSTRACT NO. 65
CITY OF ROCKWALL, ROCKWALL COUNTY, TEXAS

ALRF, L.L.C.	OWNER
9311 LBJ FREEWAY DALLAS, TEXAS	972-238-7148 75243
TEXAS GEOMATICS	SURVEYOR
P.O. BOX 430 ROWLETT, TEXAS	972-475-4466 75030-0430

Basis of Bearing: Northeast line of Lot 1, Block A Newman Center No. One as recorded in Cabinet C, Slide 15 M.R.R.C.T.

AUGUST 2001

SHEET 1 OF 2

Cab. E, Slide 141 & 142
12/03/01 File Date