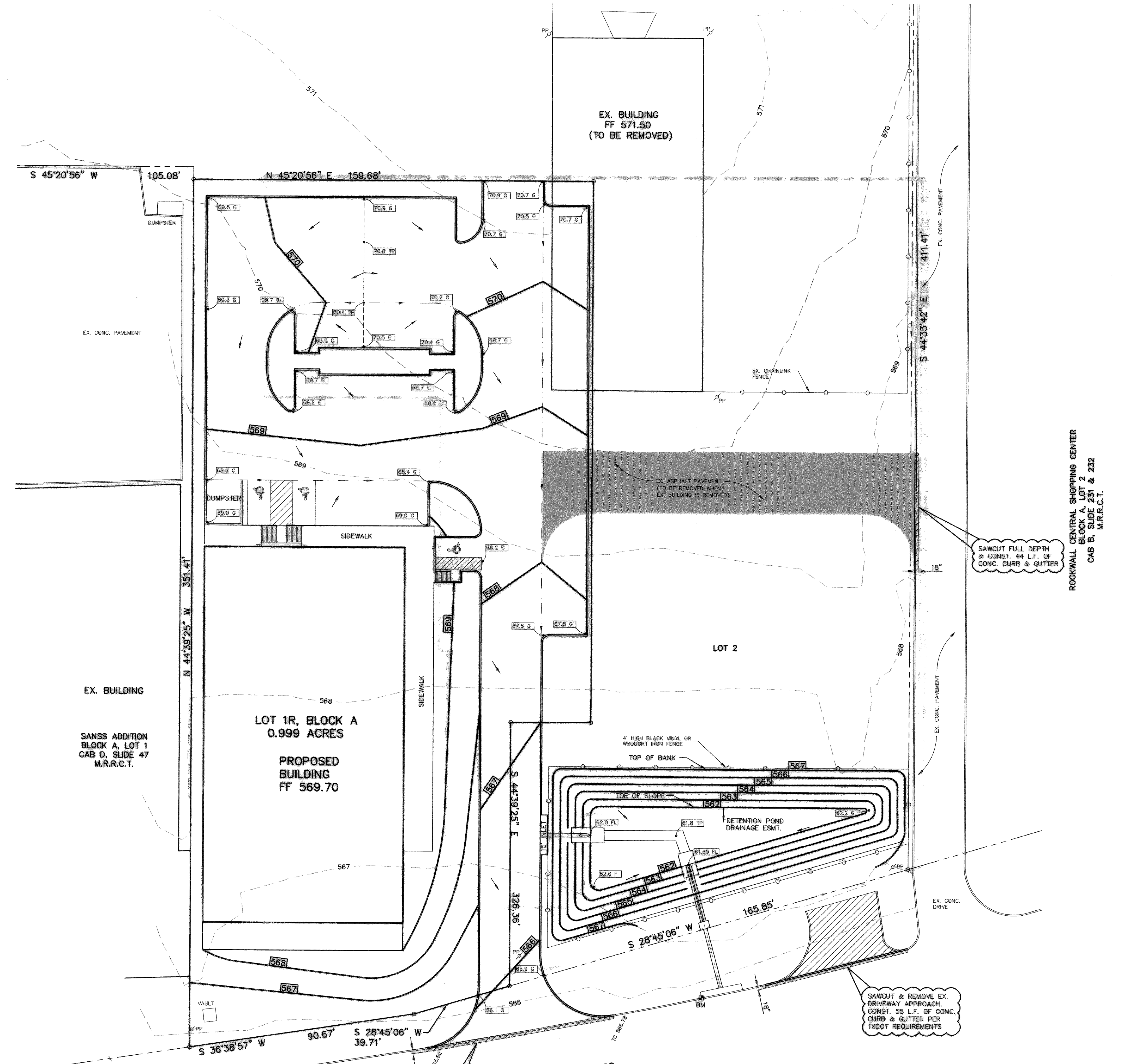
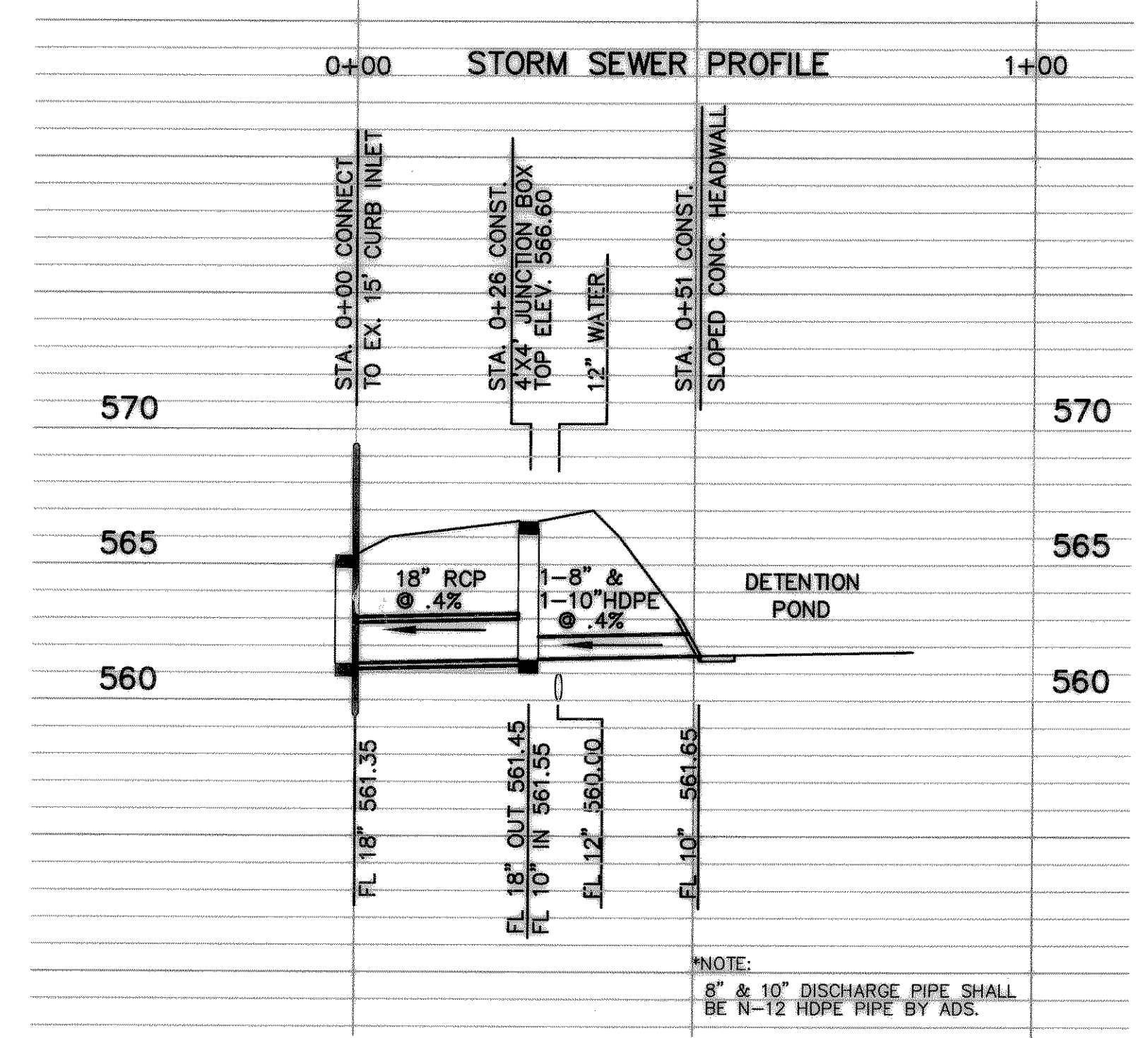


GRADING GENERAL NOTES

- All work shall be in accordance with these plans and City of Rockwall Standard Detail Sheets.
- All proposed contours are approximate. Proposed spot elevations and designated gradient are to be used in the event of any discrepancies.
- The General Contractor and all subcontractors shall verify the suitability of all existing and proposed site conditions including grades and dimensions before commencement of any construction. In the event of any conflict and prior to commencement of any construction, immediately notify Engineer. Minor adjustments of finished grade to accomplish spot drainage are acceptable.
- All spot elevations are top of pavement or gutter. To obtain top of curb elevation, add 0.5 feet.
- Ground shall be scarified prior to placing any fill.
- Fill shall be placed in accordance with the geotechnical investigation and soils report recommendations and in compliance with City of Rockwall Ordinances.
- It is the responsibility of the Contractor to locate and/or establish a benchmark prior to construction and maintain the benchmark during construction.
- The locations of all utilities indicated on the plans are taken from available public records. The exact location and depth of all utilities indicated must be determined by the Contractor. It shall be the duty of the Contractor to ascertain whether any additional facilities other than those shown on the plans may be present.
- All fill shall be compacted with sheepfoot roller.
- See additional notes Sheet C6.

LEGEND

- 750-- EXISTING CONTOURS
- 750 PROPOSED CONTOURS
- TC 50.1 EX. SPOT ELEVATION
- [56.1] PROP. SPOT ELEVATION
- FLOW DIRECTION
- VALLEY
- - - DRAINAGE DIVIDE
- TC TOP OF CURB
- TP TOP OF PAVEMENT
- G GUTTER
- F FINISHED GRADE
- EX. ASPHALT PAVEMENT TO BE REMOVED



RECORD DRAWING

IMPROVEMENTS INDICATED ON THIS PLAN WHERE MADE IN ACCORDANCE WITH THE PROJECT PLANS & SPECIFICATIONS. THE DESIGN ENGINEER IS NOT AWARE OF ANY CHANGES TO THESE PLANS OTHER THAN THOSE PROVIDED ON A CONTRACTOR'S SET OF MARKUPS.

DATE: OCTOBER 2, 2002

BENCHMARK: TOP OF CURB SOUTH END OF A 15\"/>

ELEV. 565.46