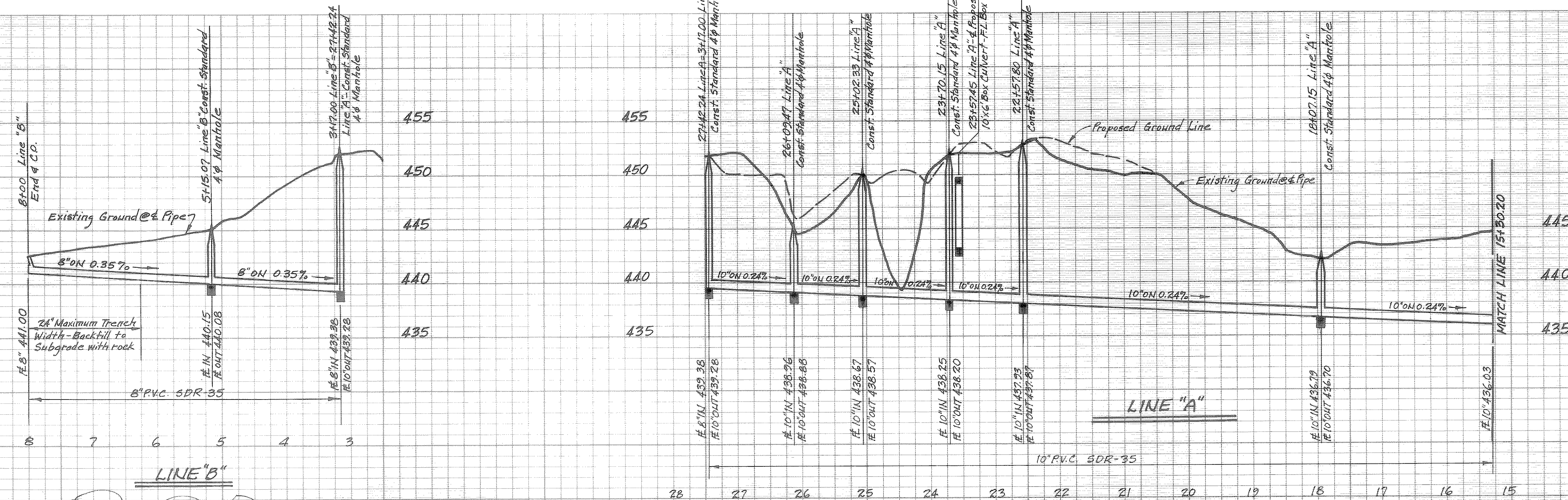
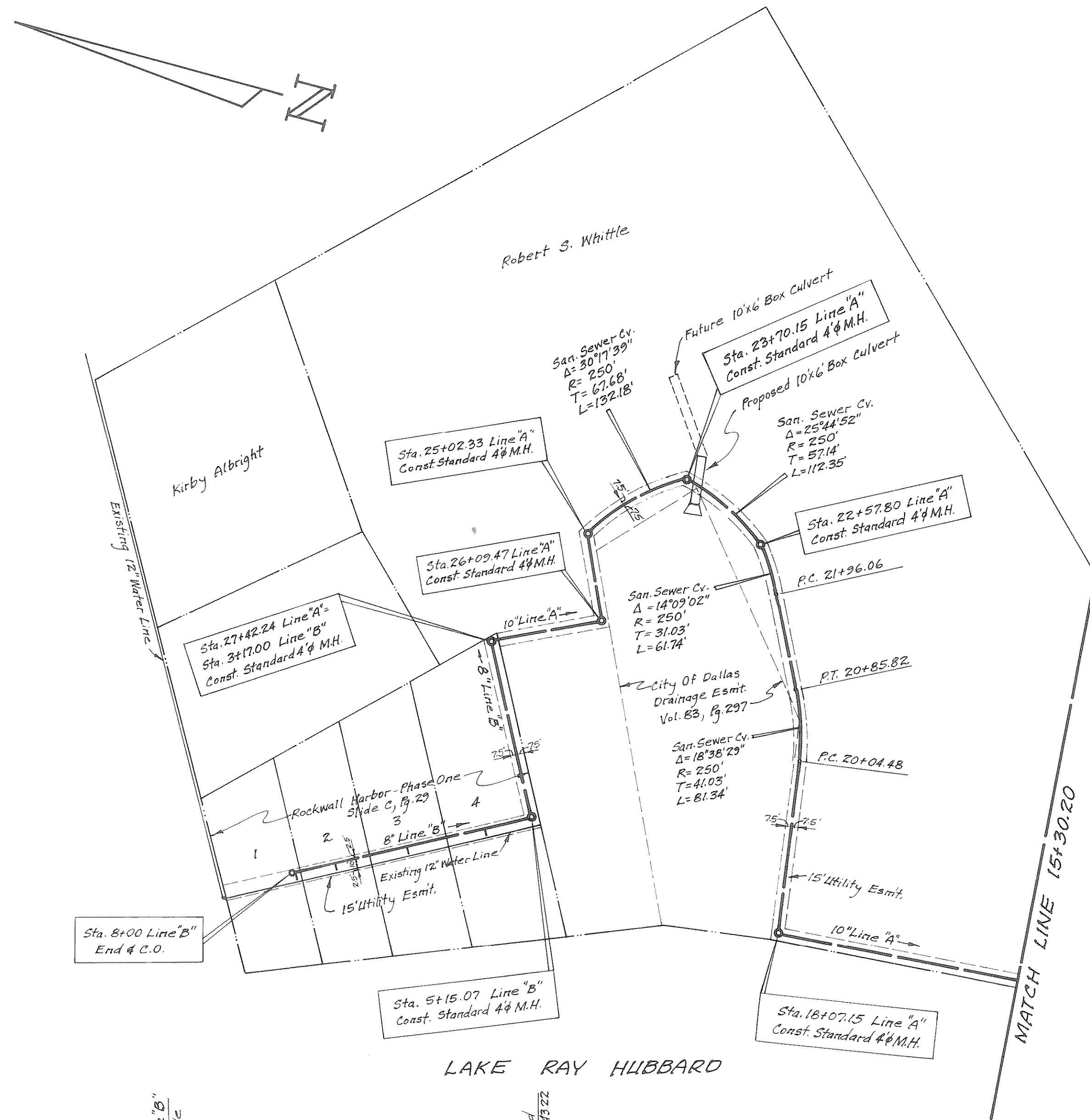


TRENCH SAFETY

GENERAL NOTES:

- Contractor MUST utilize the detail shown or
- Contractor may furnish a design that will satisfy the requirements of House Bill 662 and 665 as passed by the State Legislature in 1987.
- Bid Item "Trench Safety" will include all cost associated with design and or construction.



Note:
Flow Line of Service Line
shall meet the center line
of 8" Main.

REVISION DESCRIPTION		DATE	SCALE	DESIGN	DRAWN
		10-13-88	1"=100'H 1"=6'V	G.W.	L.G.

HAROLD L. EVANS & ASSOCIATES Consulting Engineers P. O. Box 28153 Dallas, Texas 75228 (214) 328-8133		SANITARY SEWER IMPROVEMENTS ROCKWALL HARBOR - PHASE ONE CITY OF ROCKWALL ROCKWALL COUNTY, TEXAS	SHEET NO. 2 4 JOB NO. 8723
---	--	---	--

