

STORM SEWER CURVE DATA			
CURVE NO.	①	②	③
Δ	36° 52' 49"	24° 37' 12"	° ' "
R	158.50'	65.00'	'
T	52.85'	14.18'	'
L	102.02'	27.93'	'

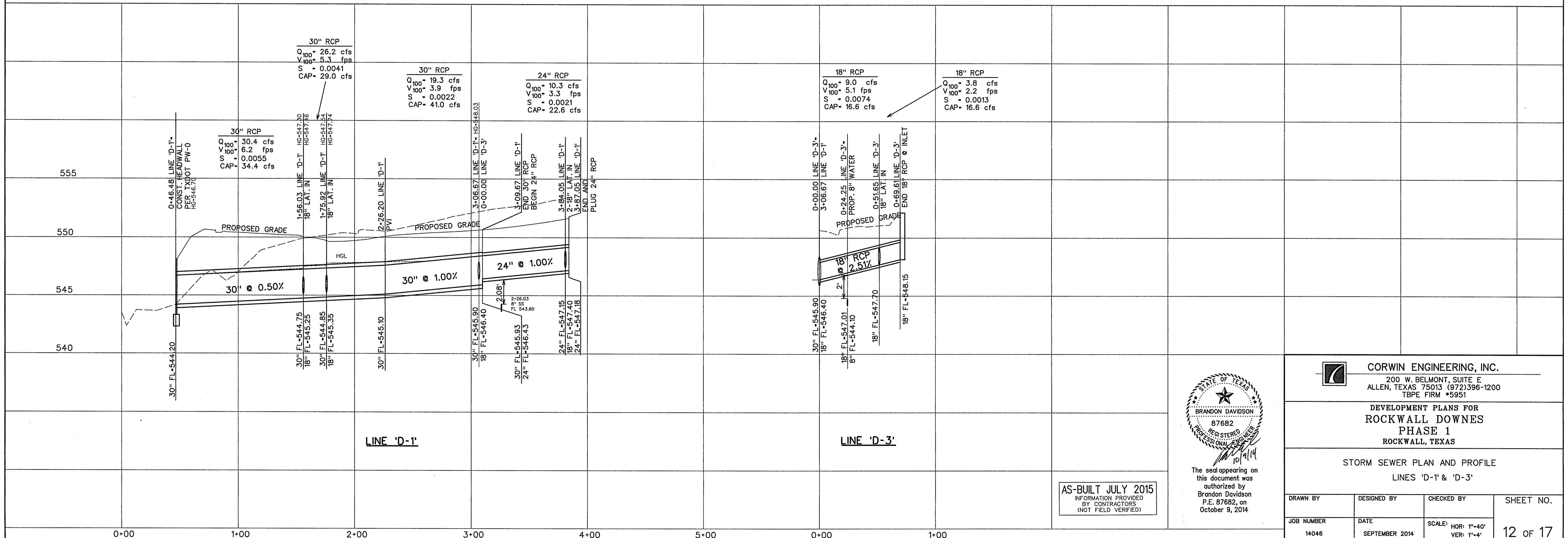
BENCHMARK *1
 PK NAIL FOUND IN CENTER OF S. JOHN KING BLVD.
 20' ± NORTH OF MEDIAN OPENING NEAR NORTHWEST
 CORNER OF PROPERTY.

ELEV. -564.12
 N. 7021747.513
 E. 2602779.713

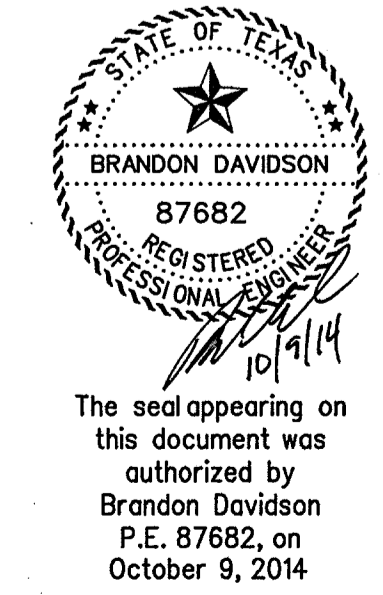
BENCHMARK *2
 "X" FOUND ON NORTH END OF TOP OF HEADWALL ON
 WEST SIDE OF S. JOHN KING BLVD. AT BUFFALO CREEK.

ELEV. -550.82
 N. 7020725.306
 E. 2602982.310

- LEGEND**
- ⓑ - BLOCK LABEL
 - Ⓜ - INLET NUMBER
 - ① - CURVE NUMBER
 - - SANITARY SEWER
 - +— - WATER
 - ||— - PROPOSED STORM SEWER



AS-BUILT JULY 2015
 INFORMATION PROVIDED
 BY CONTRACTORS
 (NOT FIELD VERIFIED)



CORWIN ENGINEERING, INC.
 200 W. BELMONT, SUITE E
 ALLEN, TEXAS 75013 (972)396-1200
 TBPE FIRM #5951

DEVELOPMENT PLANS FOR
ROCKWALL DOWNS
 PHASE 1
 ROCKWALL, TEXAS

STORM SEWER PLAN AND PROFILE
 LINES 'D-1' & 'D-3'

DRAWN BY	DESIGNED BY	CHECKED BY	SHEET NO.
JOB NUMBER	DATE	SCALE: HOR: 1"=40' VER: 1"=4'	12 OF 17