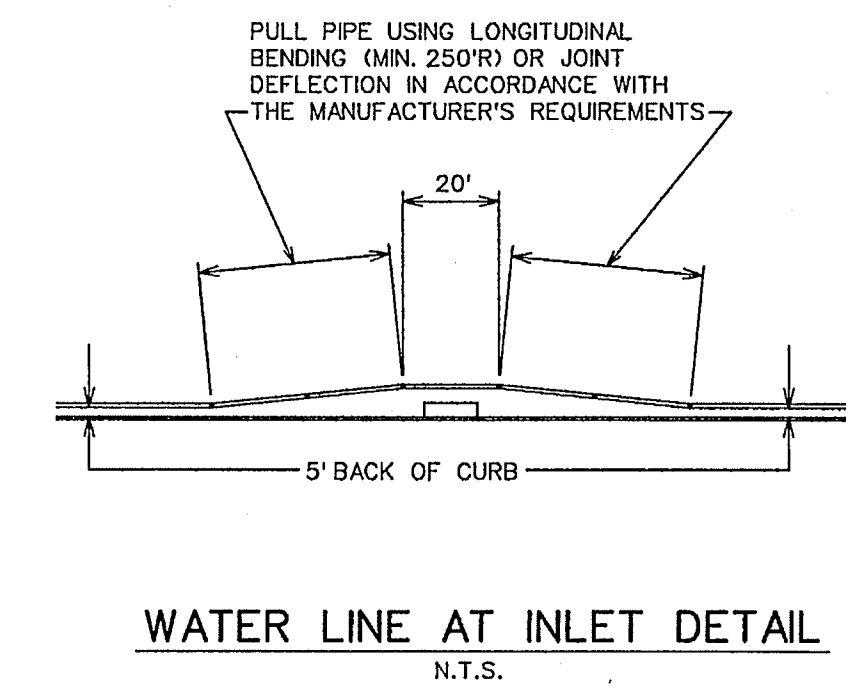
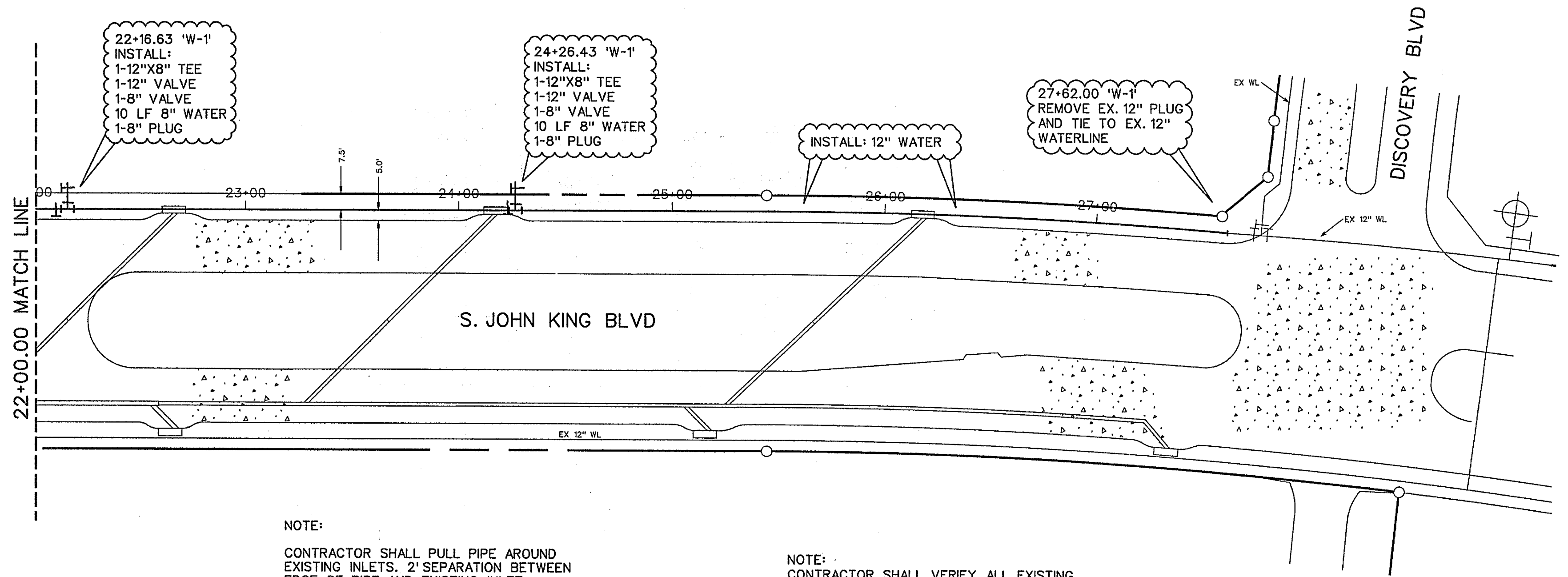


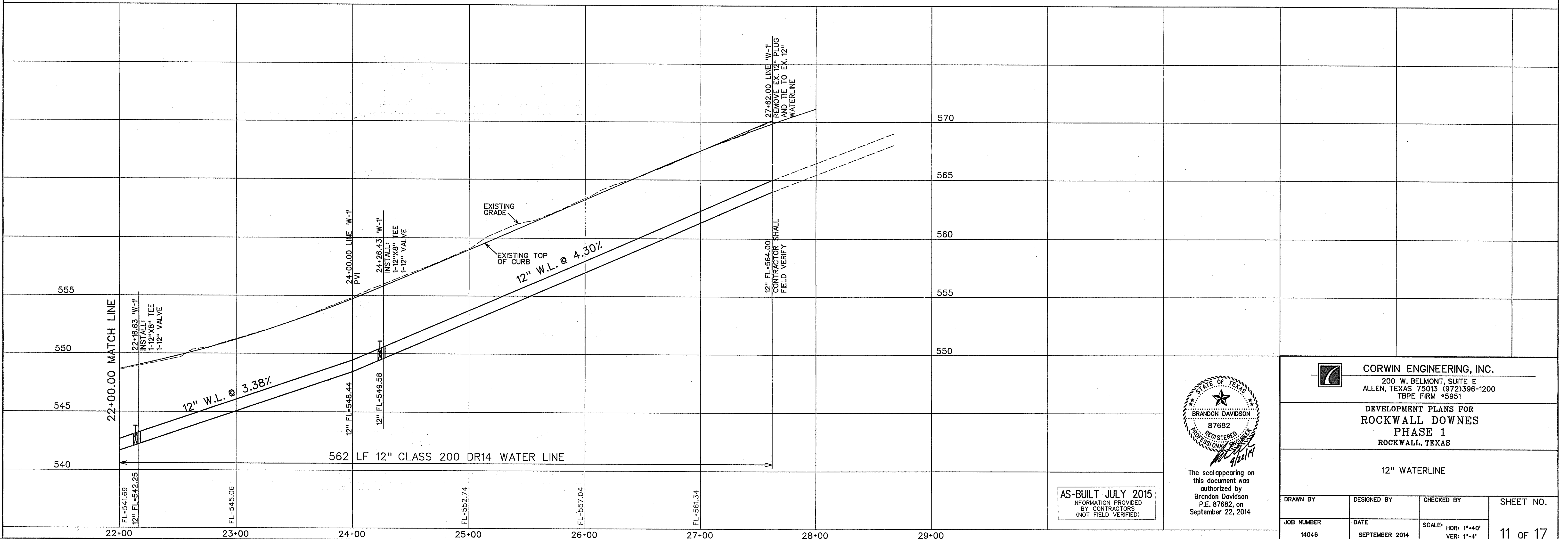
BENCHMARK *1
 PK NAIL FOUND IN CENTER OF S. JOHN KING BLVD.
 20' ± NORTH OF MEDIAN OPENING NEAR NORTHWEST
 CORNER OF PROPERTY.
 ELEV. -564.12
 N. 7021747.513
 E. 2602779.713

BENCHMARK *2
 "X" FOUND ON NORTH END OF TOP OF HEADWALL ON
 WEST SIDE OF S. JOHN KING BLVD. AT BUFFALO CREEK.
 ELEV. -550.82
 N. 7020725.306
 E. 2602982.310



NOTE:
 CONTRACTOR SHALL PULL PIPE AROUND EXISTING INLETS. 2' SEPARATION BETWEEN EDGE OF PIPE AND EXISTING INLET.

NOTE:
 CONTRACTOR SHALL VERIFY ALL EXISTING UTILITIES PRIOR TO CONSTRUCTION. EXISTING UTILITY LOCATION AND ELEVATION ARE BASED ON AS-BUILT DRAWINGS AND MAY DIFFER IN ACTUAL LOCATION AND ELEVATION.



AS-BUILT JULY 2015
 INFORMATION PROVIDED BY CONTRACTORS (NOT FIELD VERIFIED)



The seal appearing on this document was authorized by Brandon Davidson P.E. 87682, on September 22, 2014

CORWIN ENGINEERING, INC.
 200 W. BELMONT, SUITE E
 ALLEN, TEXAS 75013 (972)396-1200
 TBPE FIRM #5951

DEVELOPMENT PLANS FOR
 ROCKWALL DOWNES
 PHASE 1
 ROCKWALL, TEXAS

12" WATERLINE

DRAWN BY	DESIGNED BY	CHECKED BY	SHEET NO.
JOB NUMBER	DATE	SCALE: HOR: 1"=40' VER: 1"=4'	11 of 17
14046	SEPTEMBER 2014		