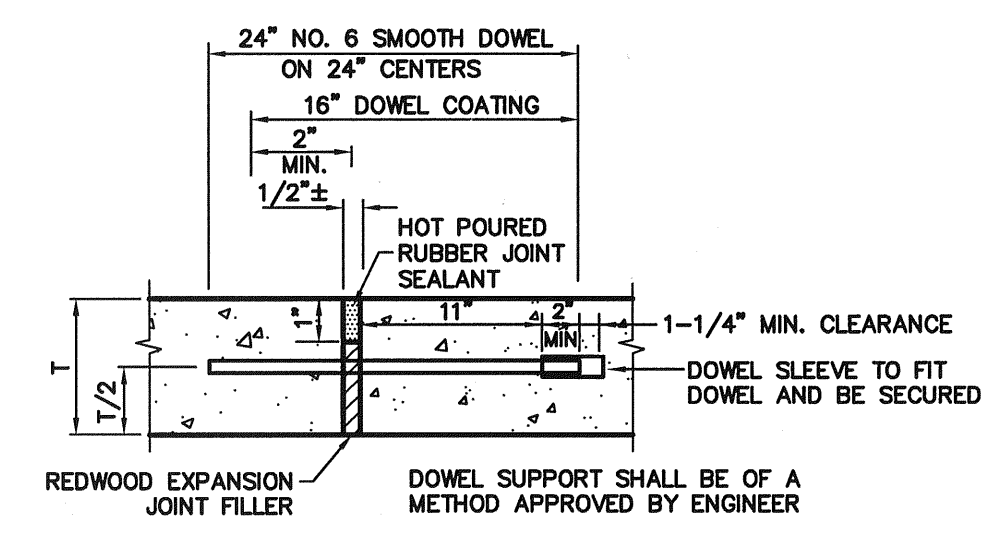


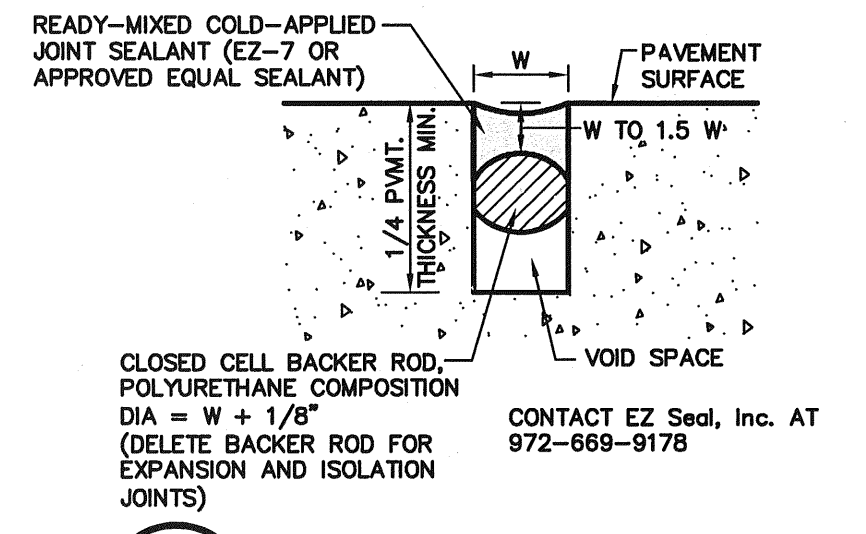
LEGEND
 [Hatched Box] PROPOSED 5" CONCRETE
 3600 PSI, 6 SACK MIX

PAVING NOTES

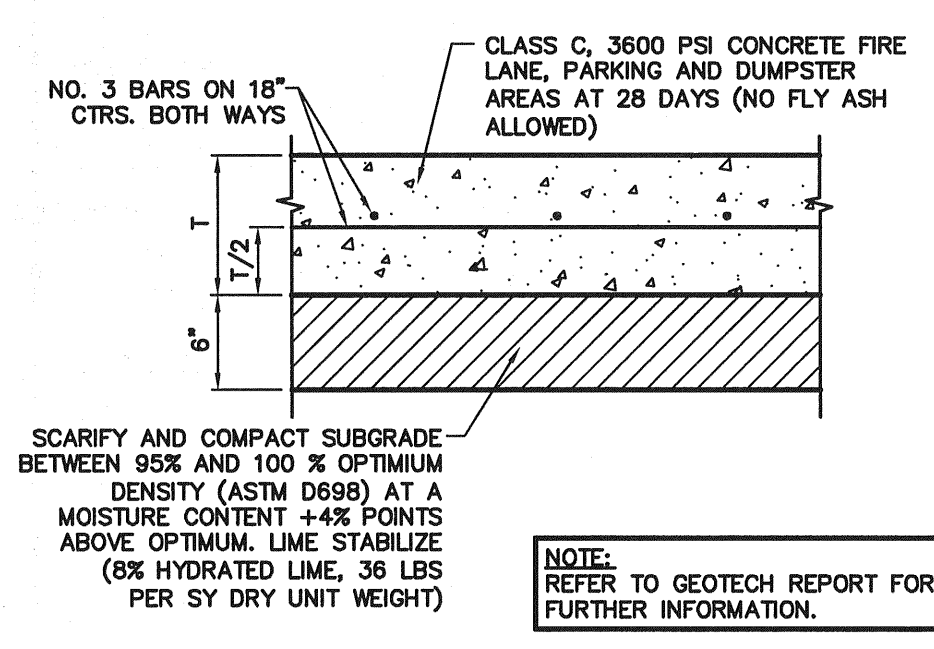
1. ALL DIMENSIONS ARE FROM BACK OF CURB UNLESS OTHERWISE NOTED.
2. UNLESS OTHERWISE NOTED, ALL CONCRETE SHALL BE CLASS "A", (3000 PSI) 5 SACK MIX MINIMUM.
3. UNLESS NOTED, ALL FILL PLACED UNDER PAVING SHALL BE COMPACTED TO 95% STANDARD PROCTOR DENSITY IN 6 INCH LIFTS. REFER TO STRUCTURAL SPECIFICATION FOR FILL PLACED BENEATH BUILDING AREAS. ALL OTHER FILL AREAS TO BE COMPACTED TO 90% STANDARD PROCTOR.
4. THE CONTRACTOR SHALL SUBMIT A JOINT SPACING PLAN TO THE ENGINEER FOR APPROVAL. UNLESS NOTED, EXPANSION JOINT SPACING SHALL BE 90' MAXIMUM EACH WAY WITH NO KEYWAYS AND SAWED DUMMY JOINTS SHALL BE 15' EACH WAY.
5. TRANSVERSE CONSTRUCTION JOINTS SHALL BE USED AT THE END OF EACH DAY'S PAVING AND WHERE INTERRUPTIONS SUSPEND OPERATIONS FOR 30 MINUTES OR MORE.
6. ALL PAVEMENTS TO BE REMOVED SHALL BE SAWCUT TO A NEAT LINE, MINIMUM 1-1/2" DEEP, AND THE PAVEMENT REMOVED IN SUCH A MANNER AS TO PRESERVE THE EXISTING TRANSVERSE REINFORCING STEEL TO THE MAXIMUM EXTENT POSSIBLE.
7. ALL CURB AND GUTTER SHALL BE INTEGRAL WITH THE PAVEMENT AND HAVE THE SAME COMPRESSIVE STRENGTH.
8. PAVEMENT REINFORCEMENT SHALL BE #3 BARS, SPACED AT 18" CENTER TO CENTER EACH WAY EXCEPT WHERE NOTED IN THE PLANS.
9. BAR LAPS SHALL BE 30 DIAMETERS IN LENGTH.
10. ALL STRIPES SHALL BE 4" WIDE, UNLESS OTHERWISE NOTED.
11. INSTALLATION AND PLACEMENT OF IRRIGATION SLEEVES AND UTILITY CONDUITS SHALL BE IN ACCORDANCE WITH LANDSCAPE ARCHITECTS AND MEP PLANS.
12. SIDEWALKS AND ACCESSIBLE ROUTES SHALL HAVE A SLOPE NO GREATER THAN 5% AND A CROSS FALLO NO GREATER THAN 2% UNLESS NOTED OTHERWISE.
13. FIRELANE PAVING SHALL BE 6.0 SACK MIX MINIMUM FOR MACHINE PLACE AND 6.5 SACK MIX FOR HAND PLACE.



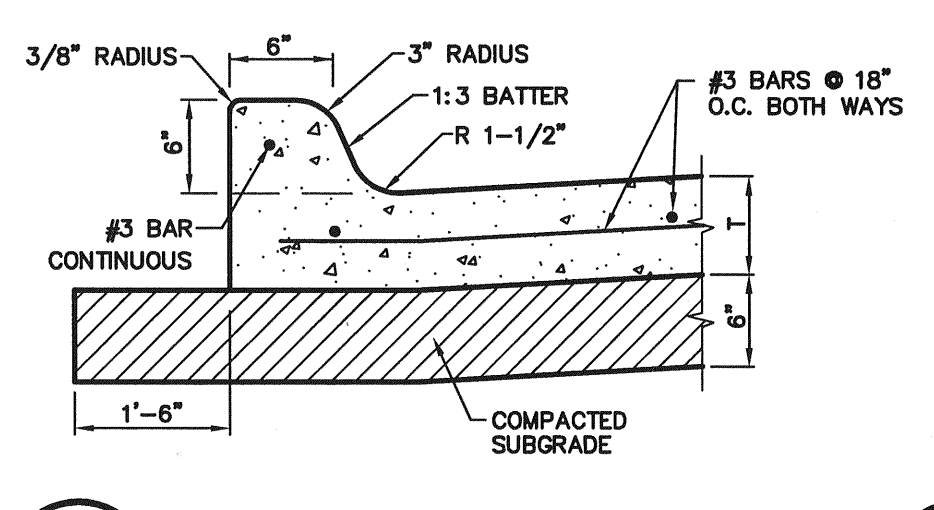
5 EXPANSION JOINT
 NOT TO SCALE



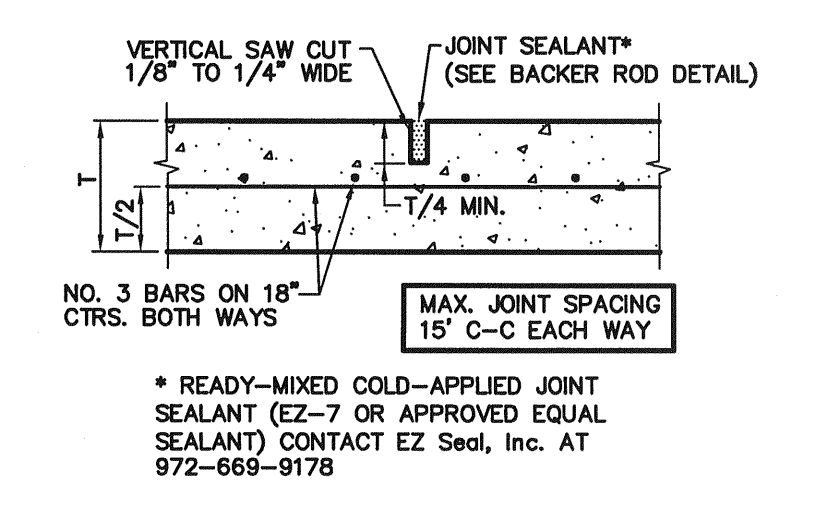
6 BACKER ROD
 NOT TO SCALE



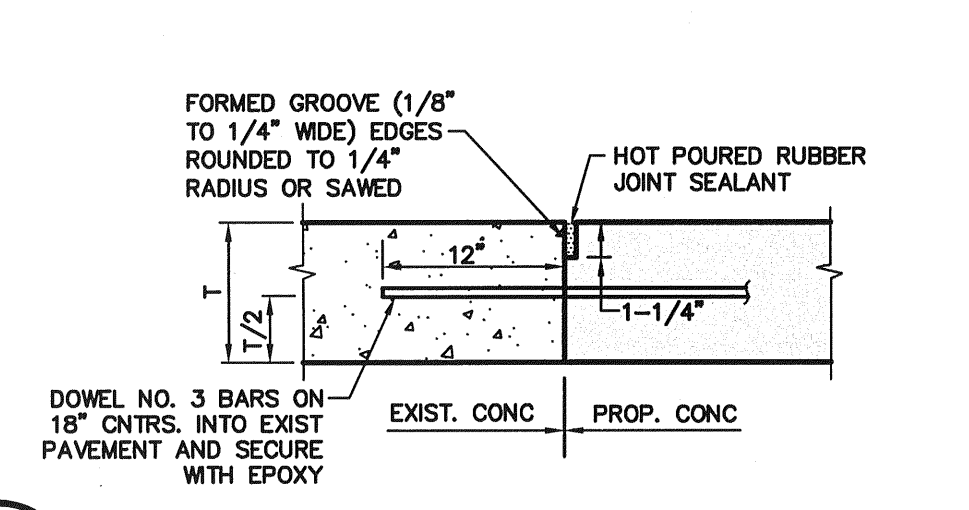
1 CONCRETE PAVEMENT SECTION
 NOT TO SCALE



2 INTEGRAL CURB
 NOT TO SCALE



3 SAWED DUMMY JOINT
 NOT TO SCALE



4 PAVEMENT CONNECTION
 NOT TO SCALE

RECORD DRAWING
 THIS DRAWING HAS BEEN REVISED TO REFLECT CONSTRUCTION RECORDS MAINTAINED AND PROVIDED BY THE CONTRACTOR FOR THIS PROJECT.
 CONTRACTOR: ROGERS O'BRIEN
 DATE REVISED: 2/24/2009

NO.	DATE	REVISION
Δ	2/24/2009	RECORD DRAWINGS
Δ	5/22/2008	UPDATED BUILDING FOOTPRINT, ADDED HANDICAP PARKING ADDED CURB AT NW CORNER OF BUILDING

Pacheco Koch Consulting Engineers
 8350 N. CENTRAL EXPWY. SUITE 1000 DALLAS, TX. 75206 972.235.3031

PAVING PLAN
MOB PARKING LOT EXPANSION
ROCKWALL COMMUNITY HOSPITAL
HORIZON ROAD @ ROCKWALL PARKWAY
CITY OF ROCKWALL, TEXAS

DESIGN	DRAWN	DATE	SCALE	NOTES	FILE	NO.
EMH	RRL	FEB 2008	1"=40'			C5.1

STATE OF TEXAS
 ERIC M. HAUGLIE
 94736
 LICENSED PROFESSIONAL ENGINEER

THE SEAL APPEARING ON THIS DOCUMENT WAS AUTHORIZED BY ERIC M. HAUGLIE, P.E. 94736 ON 03/06/2008. ALTERATION OF A SEALED DOCUMENT WITHOUT PROPER NOTIFICATION TO THE RESPONSIBLE ENGINEER IS AN OFFENSE UNDER THE TEXAS ENGINEERING PRACTICE ACT.

RHH/T
 03/02/2009 - 7:50AM
 M:\DWG-15\1567C-08-01\DWG\1567C-08-011C.DWG

ROCKWALL COMMUNITY HOSPITAL MOB PARKING LOT EXPANSION