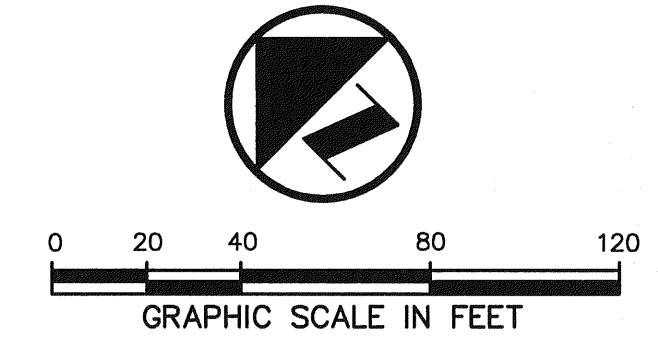


**HORIZON ROAD  
(F.M. ROAD NO. 3097)**



**LEGEND**

PH	FIRE HYDRANT
PP	POWER POLE
LS	LIGHT STANDARD
WM	WATER METER
WV	WATER VALVE
CB	CLEANOUT
MH	MANHOLE
GM	GAS METER
---	PROPERTY LINE

**HYDRAULICS TABLE FOR LATERALS**

LINE	LATERAL STATION	LATERAL LENGTH	PIPE SLOPE	PIPE SIZE	Q100 cfs	V100 fps	V <sup>2</sup> /2g	n	Sf ft/ft	C	PARTIAL FLOW (Vp)	PARTIAL FLOW (Dp)
"ST-1"	0+69.80	6.0'	41.7%	18"	12.9	7.30	0.83	0.013	0.0151	67.8	29.54	0.44
"ST-1"	0+82.00	15.0'	4.5%	18"	5.5	3.11	0.15	0.013	0.0027	22.3	NA	NA
"ST-2"	0+02.00	5.0'	75.4%	24"	18.3	5.83	0.53	0.013	0.0065	196.4	39.16	0.41

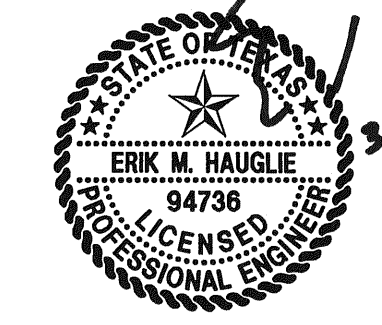
**CAUTION !**

CONTACT:  
 TXU GAS/ONCOR ENERGY DELIVERY: (972) 570-4126  
 VERIZON: (972)434-0817  
 AT&T BROADBAND: (972)501-7000  
 TEXAS ONE CALL: 1-800-245-4545  
 48 HOURS PRIOR TO CONSTRUCTION

**BENCH MARK LIST**

- BM# 1 CITY OF ROCKWALL MONUMENT "RESET 1"; 3" BRASS DISK FOUND AT RIDGE ROAD (F.M. 740) AND SUMMER LEE DRIVE NEAR THE NORTH WEST CORNER OF THE A PARKING LOT FOR COMMUNITY BANK. ELEV=567.70
- BM# 2 " " " CUT FOUND ON THE BACK OF CURB ON THE POINT ON CURVATURE OF THE SOUTHWEST CORNER OF THE INTERSECTION OF SUMMER LEE DRIVE AND OAK DRIVE. ELEV=563.21
- BM# 3 " " " CUT SET ON THE BACK OF CURB AT THE POINT OF CURVE OF ROCKWALL PARKWAY AT THE NORTHEAST CORNER OF THE INTERSECTION OF SUMMER LEE DRIVE AND ROCKWALL PARKWAY. ELEV=552.82

NOTE:  
 ALL DIMENSIONS ARE FROM BACK OF CURB TO BACK OF CURB UNLESS OTHERWISE NOTED.



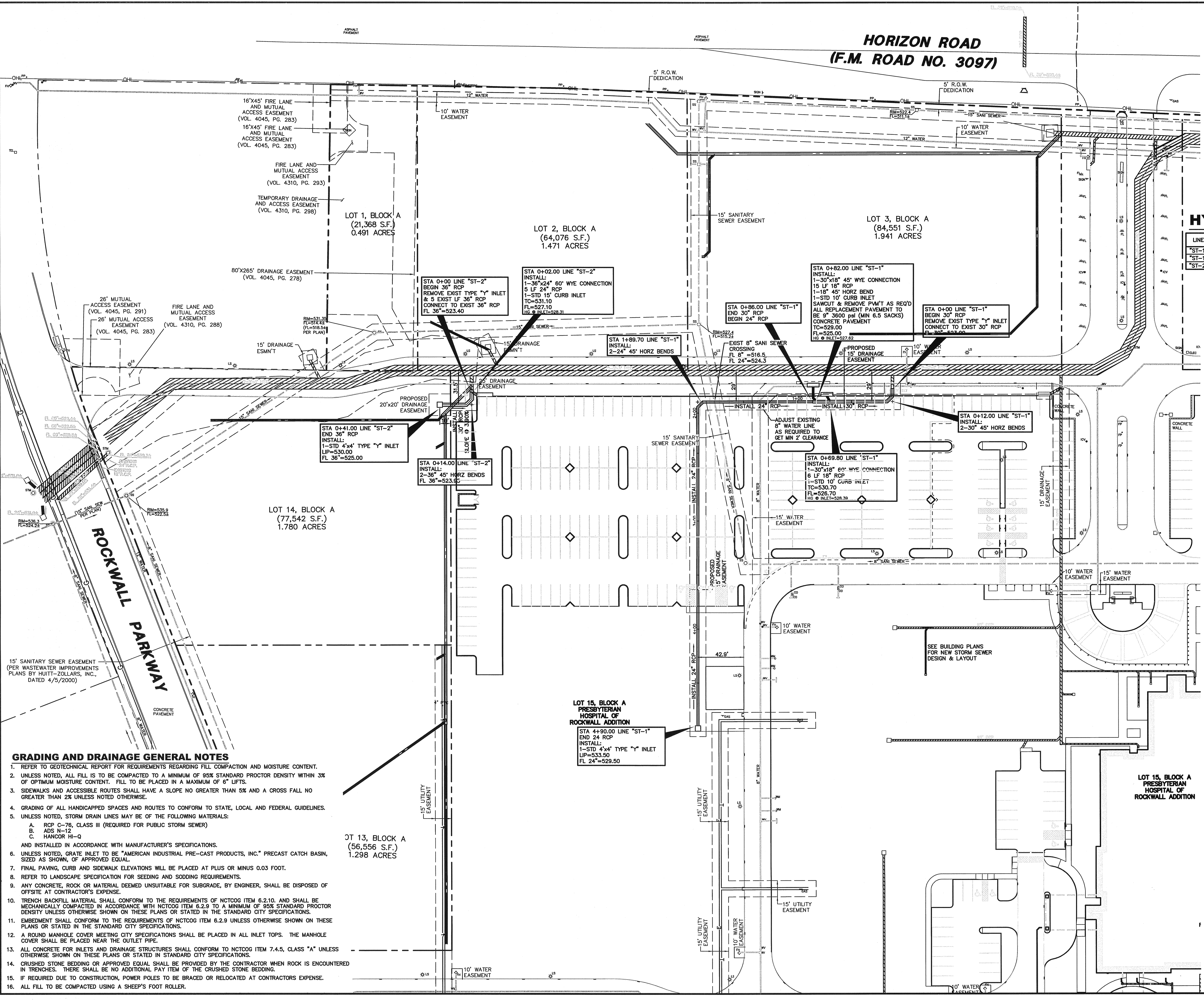
THE SEAL APPEARING ON THIS DOCUMENT WAS AUTHORIZED BY ERIK M. HAUGLIE, P.E. 94736 ON 03/06/2008. ALTERATION OF A SEALED DOCUMENT WITHOUT PROPER NOTIFICATION TO THE RESPONSIBLE ENGINEER IS AN OFFENSE UNDER THE TEXAS ENGINEERING PRACTICE ACT.

**RECORD DRAWING**

THIS DRAWING HAS BEEN REVISED TO REFLECT CONSTRUCTION RECORDS MAINTAINED AND PROVIDED BY THE CONTRACTOR FOR THIS PROJECT.

CONTRACTOR: ROGERS O'BRIEN  
 DATE REVISED: 2/24/2009

NO.	DATE	REVISION				
	2/24/2009	RECORD DRAWINGS				
<b>Pacheco Koch Consulting Engineers</b> 8350 N. CENTRAL EXPWY., SUITE 1000 DALLAS, TX. 75208 972.235.3031						
<b>STORM SEWER PLAN</b> <b>MOB PARKING LOT EXPANSION</b> <b>ROCKWALL COMMUNITY HOSPITAL</b> <b>HORIZON ROAD @ ROCKWALL PARKWAY</b> <b>CITY OF ROCKWALL, TEXAS</b>						
DESIGN	DRAWN	DATE	SCALE	NOTES	FILE	NO.
EMH	RRL	FEB. 2008	1"=40'			<b>C4.1</b>



- GRADING AND DRAINAGE GENERAL NOTES**
- REFER TO GEOTECHNICAL REPORT FOR REQUIREMENTS REGARDING FILL COMPACTION AND MOISTURE CONTENT.
  - UNLESS NOTED, ALL FILL IS TO BE COMPACTED TO A MINIMUM OF 95% STANDARD PROCTOR DENSITY WITHIN 3% OF OPTIMUM MOISTURE CONTENT. FILL TO BE PLACED IN A MAXIMUM OF 6" LIFTS.
  - SIDEWALKS AND ACCESSIBLE ROUTES SHALL HAVE A SLOPE NO GREATER THAN 5% AND A CROSS FALL NO GREATER THAN 2% UNLESS NOTED OTHERWISE.
  - GRADING OF ALL HANDICAPPED SPACES AND ROUTES TO CONFORM TO STATE, LOCAL AND FEDERAL GUIDELINES.
  - UNLESS NOTED, STORM DRAIN LINES MAY BE OF THE FOLLOWING MATERIALS:
    - A. RCP C-76, CLASS III (REQUIRED FOR PUBLIC STORM SEWER)
    - B. ADS N-12
    - C. HANCOR HI-Q
 AND INSTALLED IN ACCORDANCE WITH MANUFACTURER'S SPECIFICATIONS.
  - UNLESS NOTED, GRATE INLET TO BE "AMERICAN INDUSTRIAL PRE-CAST PRODUCTS, INC." PRECAST CATCH BASIN, SIZED AS SHOWN, OF APPROVED EQUAL.
  - FINAL PAVING, CURB AND SIDEWALK ELEVATIONS WILL BE PLACED AT PLUS OR MINUS 0.03 FOOT.
  - REFER TO LANDSCAPE SPECIFICATION FOR SEEDING AND SODDING REQUIREMENTS.
  - ANY CONCRETE, ROCK OR MATERIAL DEEMED UNSUITABLE FOR SUBGRADE, BY ENGINEER, SHALL BE DISPOSED OF OFFSITE AT CONTRACTOR'S EXPENSE.
  - TRENCH BACKFILL MATERIAL SHALL CONFORM TO THE REQUIREMENTS OF NCTCOG ITEM 6.2.10, AND SHALL BE MECHANICALLY COMPACTED IN ACCORDANCE WITH NCTCOG ITEM 6.2.9 TO A MINIMUM OF 95% STANDARD PROCTOR DENSITY UNLESS OTHERWISE SHOWN ON THESE PLANS OR STATED IN THE STANDARD CITY SPECIFICATIONS.
  - EMBEDMENT SHALL CONFORM TO THE REQUIREMENTS OF NCTCOG ITEM 6.2.9 UNLESS OTHERWISE SHOWN ON THESE PLANS OR STATED IN THE STANDARD CITY SPECIFICATIONS.
  - A ROUND MANHOLE COVER MEETING CITY SPECIFICATIONS SHALL BE PLACED IN ALL INLET TOPS. THE MANHOLE COVER SHALL BE PLACED NEAR THE OUTLET PIPE.
  - ALL CONCRETE FOR INLETS AND DRAINAGE STRUCTURES SHALL CONFORM TO NCTCOG ITEM 7.4.5, CLASS "A" UNLESS OTHERWISE SHOWN ON THESE PLANS OR STATED IN STANDARD CITY SPECIFICATIONS.
  - CRUSHED STONE BEDDING OR APPROVED EQUAL SHALL BE PROVIDED BY THE CONTRACTOR WHEN ROCK IS ENCOUNTERED IN TRENCHES. THERE SHALL BE NO ADDITIONAL PAY ITEM OF THE CRUSHED STONE BEDDING.
  - IF REQUIRED DUE TO CONSTRUCTION, POWER POLES TO BE BRACED OR RELOCATED AT CONTRACTORS EXPENSE.
  - ALL FILL TO BE COMPACTED USING A SHEEP'S FOOT ROLLER.

RRT 1/22/2009 - 7:45AM  
 MK DWG-151 1567C-08-011 CIV.DWG

ROCKWALL COMMUNITY HOSPITAL MOB PARKING LOT EXPANSION