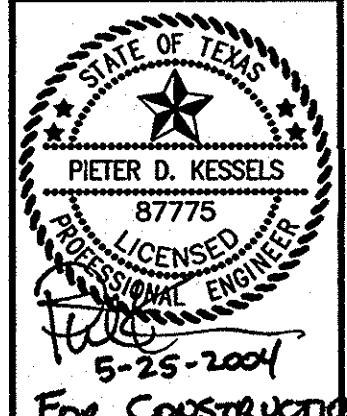


No.	Date	Revisions	App.

Kimley-Horn and Associates, Inc.
 9300 Wede Boulevard, Suite 320
 Frisco, Texas 75035
 Tel. No. (972) 335-8580
 Fax No. (972) 335-3779



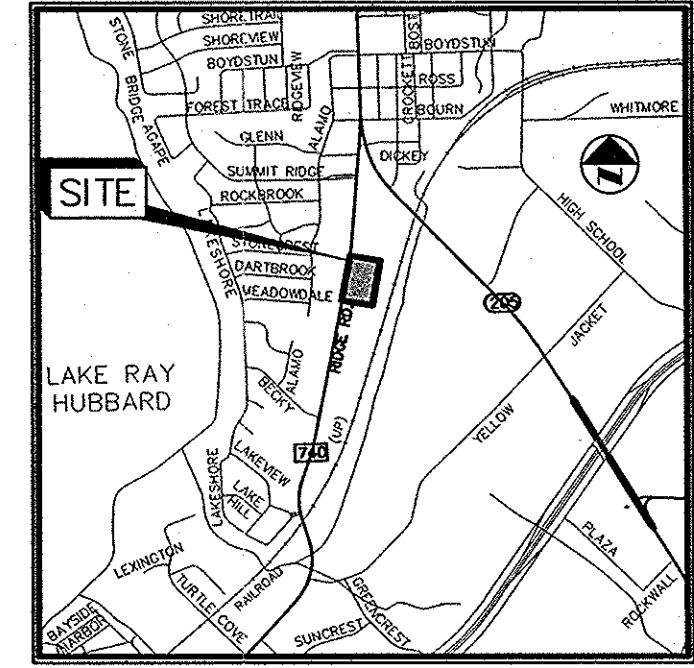
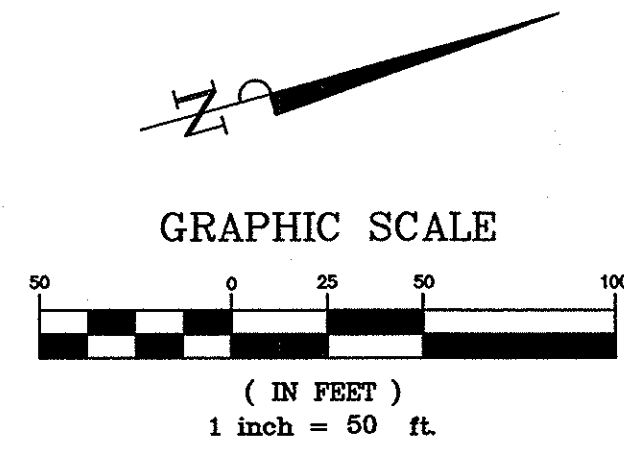
**ROCKWALL COMMONS
 MIXED USE TRACT
 CITY OF ROCKWALL, TEXAS**

TREE SURVEY

Scale: AS SHOWN
 Designed by: P.D.K.
 Drawn by: P.D.K.
 Checked by: P.D.K.
 Date: 05/25/04
 Project No. 067051007

SHEET
 TR-1
 OF 1

LEGEND	
CE	CEDAR ELM
ERC	EASTERN RED CEDAR
BD	BOIS D ARC
W	WILLOW
AE	AMERICAN ELM
CW	COTTONWOOD
A	ASH TEXAS OR GREEN
P	PECAN
S	SUMAC
H	HACKBERRY
TBD	TO BE DETERMINED



VICINITY MAP
 N.T.S.

**OFFSITE ADJACENT TREES
 (EXCL. RAILROAD PROPERTY)**

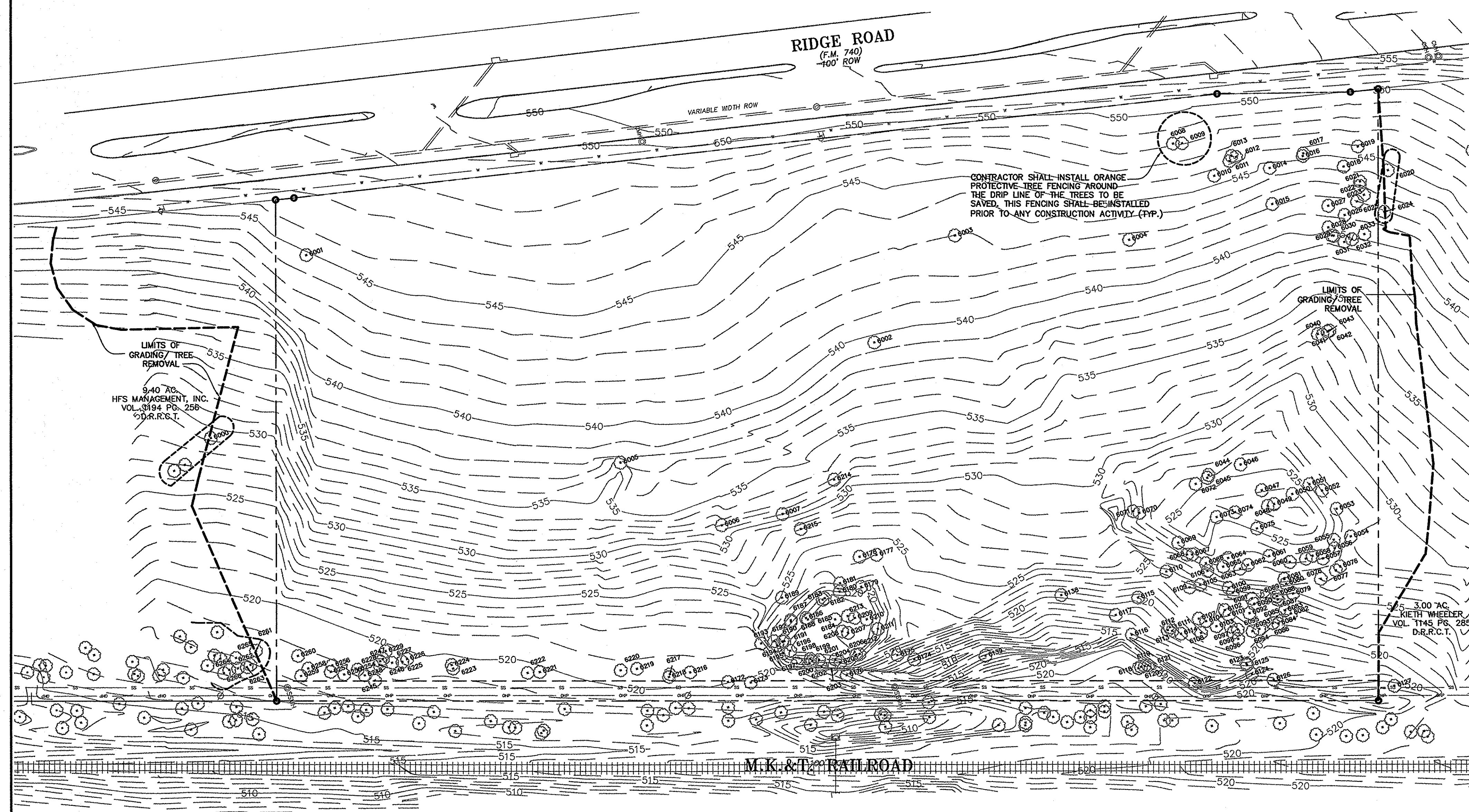
POINT#	SIZE	TYPE
6000	8N	ERC
6020	10N	BD
6024	42N	BD
6127	10N	H
6261	14N	CE
6282	14N	HB
6283	8N	BD
6284	8N	HB
6285	8N	AE
6286	8N	HB

NOTE: NO OFFSITE TREES TO BE REMOVED

ONSITE TREES

POINT#	SIZE	TYPE	POINT#	SIZE	TYPE	POINT#	SIZE	TYPE
6001	18I	ERC	6081	8N	H	6196	16N	ERC
6002	18I	ERC	6082	10N	AE	6197	8N	H
6003	18I	ERC	6083	8N	AE	6198	8N	H
6004	30N	ERC	6084	10N	AE	6199	8N	H
6005	8N	BD	6085	8N	AE	6200	10N	H
6006	30I	ERC	6086	8N	AE	6201	8N	H
6007	16I	ERC	6087	8N	AE	6202	8N	H
* 6008	10N	ERC	6088	10N	AE	6203	12N	H
* 6009	10N	H	6089	14N	A	6204	8N	H
6010	24N	H	6090	8N	AE	6205	8N	H
6011	10N	BD	6091	8N	AE	6206	8N	H
6012	10N	BD	6092	14N	AE	6207	14N	AE
6013	10N	BD	6093	8N	AE	6208	24N	AE
6014	30N	BD	6094	8N	H	6209	14N	H
6015	27N	BD	6095	10N	H	6210	14N	BD
6016	27N	BD	6096	14N	H	6211	14N	H
6017	14N	H	6097	10N	H	6212	8N	H
6018	16N	BD	6098	10N	H	6213	8N	AE
6019	10N	BD	6099	14N	AE	6214	16I	ERC
6021	14N	H	6100	8N	H	6215	10I	ERC
6022	8N	H	6101	8N	H	6216	8N	H
6023	8N	H	6102	8N	H	6217	8N	H
6025	10N	H	6103	16N	AE	6218	10N	H
6026	8N	BD	6104	8N	H	6219	8N	CE
6027	8N	BD	6105	10N	H	6220	10N	CE
6028	10N	H	6106	10N	H	6221	10N	AE
6029	10N	H	6107	8N	H	6222	10N	H
6030	14N	H	6108	8N	BD	6223	10N	AE
6031	10N	H	6109	10N	BD	6224	15N	H
6032	10N	H	6110	16N	BD	6225	8N	H
6033	14N	H	6111	10N	H	6226	10N	H
6040	8N	AE	6112	10N	H	6227	8N	H
6041	8N	AE	6113	8N	H	6228	10N	H
6042	14N	AE	6114	24N	BD	6229	8N	AE
6043	8N	W	6115	10N	AE	6245	8N	H
6044	24I	CW	6116	16N	BD	6246	10N	AE
6045	18I	CW	6117	21I	ERC	6247	8N	AE
6046	16N	BD	6118	14N	H	6248	8N	CE
6047	27N	W	6119	16N	H	6254	10N	H
6048	28N	W	6120	21N	H	6255	8N	H
6049	32N	W	6121	14N	H	6256	8N	H
6050	42N	W	6122	16N	BD	6257	8N	H
6051	15N	BD	6123	8N	BD	6258	14N	ERC
6052	14I	CW	6124	10N	H	6259	14N	H
6053	14I	CW	6125	8N	H	6260	15N	BD
6054	10I	AE	6126	8N	H			
6055	8N	H	6127	16I	ERC			
6056	14N	AE	6128	8N	H			
6057	8N	H	6129	12N	BD			
6058	8N	H	6130	8N	H			
6059	10N	H	6131	10N	AE			
6060	8N	H	6132	10N	AE			
6061	10N	W	6133	8N	H			
6062	10N	H	6134	12N	BD			
6063	10N	H	6135	14N	AE			
6064	10N	W	6136	14N	AE			
6065	8N	H	6137	14N	AE			
6066	8N	H	6138	18I	ERC			
6067	14N	H	6139	16I	ERC			
6068	8N	W	6140	10N	H			
6069	32N	W	6141	10N	BD			
6070	14N	BD	6142	12N	BD			
6071	14I	ERC	6143	8N	AE			
6072	14I	CW	6144	10N	CE			
6073	21N	W	6145	8N	H			
6074	21N	W	6146	10N	H			
6075	14N	W	6147	10N	H			
6076	10I	ERC	6148	10I	ERC			
6077	10I	ERC	6149	14N	AE			
6078	14N	BD	6150	14N	AE			
6079	16N	AE	6151	14N	CE			
6080	8N	H	6152	8N	H			

* TREES TO REMAIN
 TOTAL ONSITE TREES: 2,635 IN.
 TOTAL ONSITE TREES TO REMAIN: 20 IN.
 TOTAL ONSITE TREES TO REMOVED: 2,615 IN.



LIMITS OF GRADING/TREE REMOVAL
 940 AC.
 HFS MANAGEMENT, INC.
 VOL. 3184 PG. 258
 D.R.R.C.T.

CONTRACTOR SHALL INSTALL ORANGE PROTECTIVE TREE FENCING AROUND THE DRIP LINE OF THE TREES TO BE SAVED. THIS FENCING SHALL BE INSTALLED PRIOR TO ANY CONSTRUCTION ACTIVITY (P.P.)

LIMITS OF GRADING/TREE REMOVAL

3.00 AC.
 KEITH WHEELER
 VOL. 1145 PG. 285
 D.R.R.C.T.