

**TABLES OF DIMENSIONS AND QUANTITIES**

**HORIZONTAL THRUST BLOCK AT PIPE BEND**

I.D. (IN.)	THRUST (TONS)	EARTH		ROCK	
		A (FT.)	B (FT.)	A (FT.)	B (FT.)
4.68	1.0	0.5	2.0	1.0	1.5
10.12	2.2	1.1	4.3	2.2	3.3
16.18	5.0	2.5	10.0	5.0	7.5
20.0	8.1	4.1	17.3	8.1	12.2
24.0	11.3	5.7	24.6	11.3	17.1
28.0	14.6	7.3	31.9	14.6	22.0
32.0	17.9	8.9	39.2	17.9	26.9
36.0	21.2	10.5	46.5	21.2	31.8
40.0	24.5	12.1	53.8	24.5	36.7
44.0	27.8	13.7	61.1	27.8	41.6
48.0	31.1	15.3	68.4	31.1	46.5
52.0	34.4	16.9	75.7	34.4	51.4
56.0	37.7	18.5	83.0	37.7	56.3
60.0	41.0	20.1	90.3	41.0	61.2
64.0	44.3	21.7	97.6	44.3	66.1
68.0	47.6	23.3	104.9	47.6	71.0
72.0	50.9	24.9	112.2	50.9	75.9
76.0	54.2	26.5	119.5	54.2	80.8
80.0	57.5	28.1	126.8	57.5	85.7
84.0	60.8	29.7	134.1	60.8	90.6
88.0	64.1	31.3	141.4	64.1	95.5
92.0	67.4	32.9	148.7	67.4	100.4
96.0	70.7	34.5	156.0	70.7	105.3

DATE: NOV. '96  
STANDARD DRAWING NO. 4010B

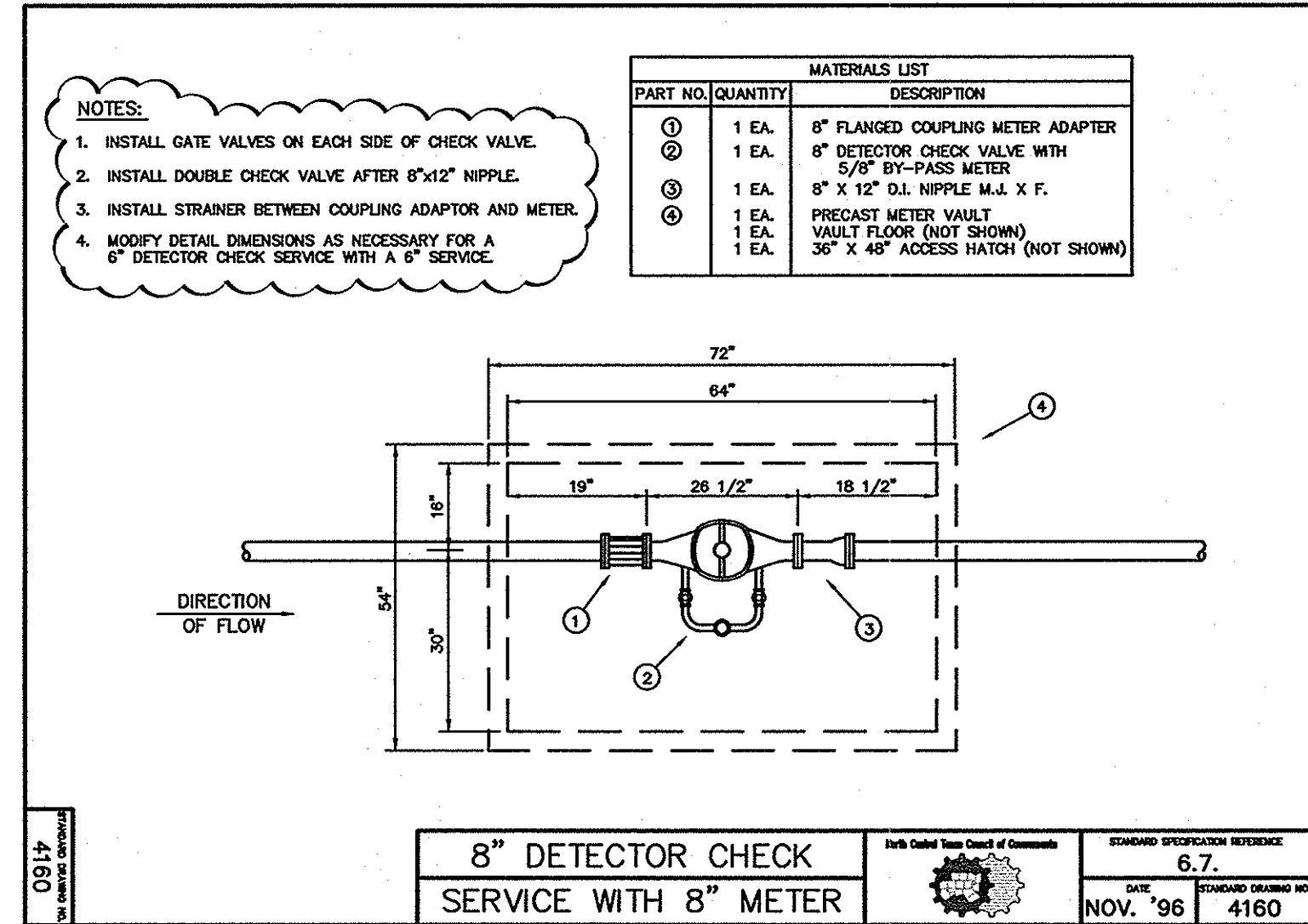
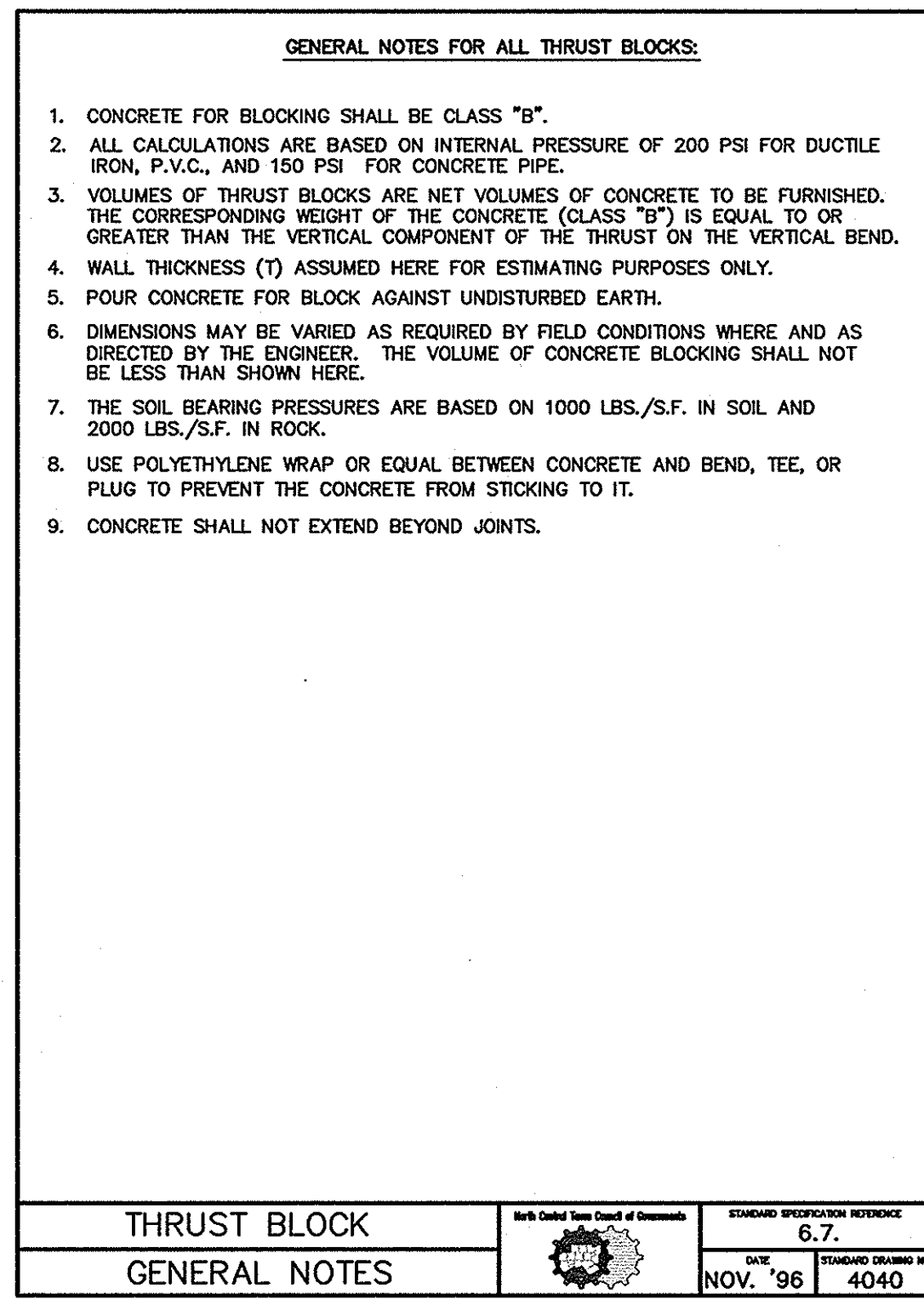
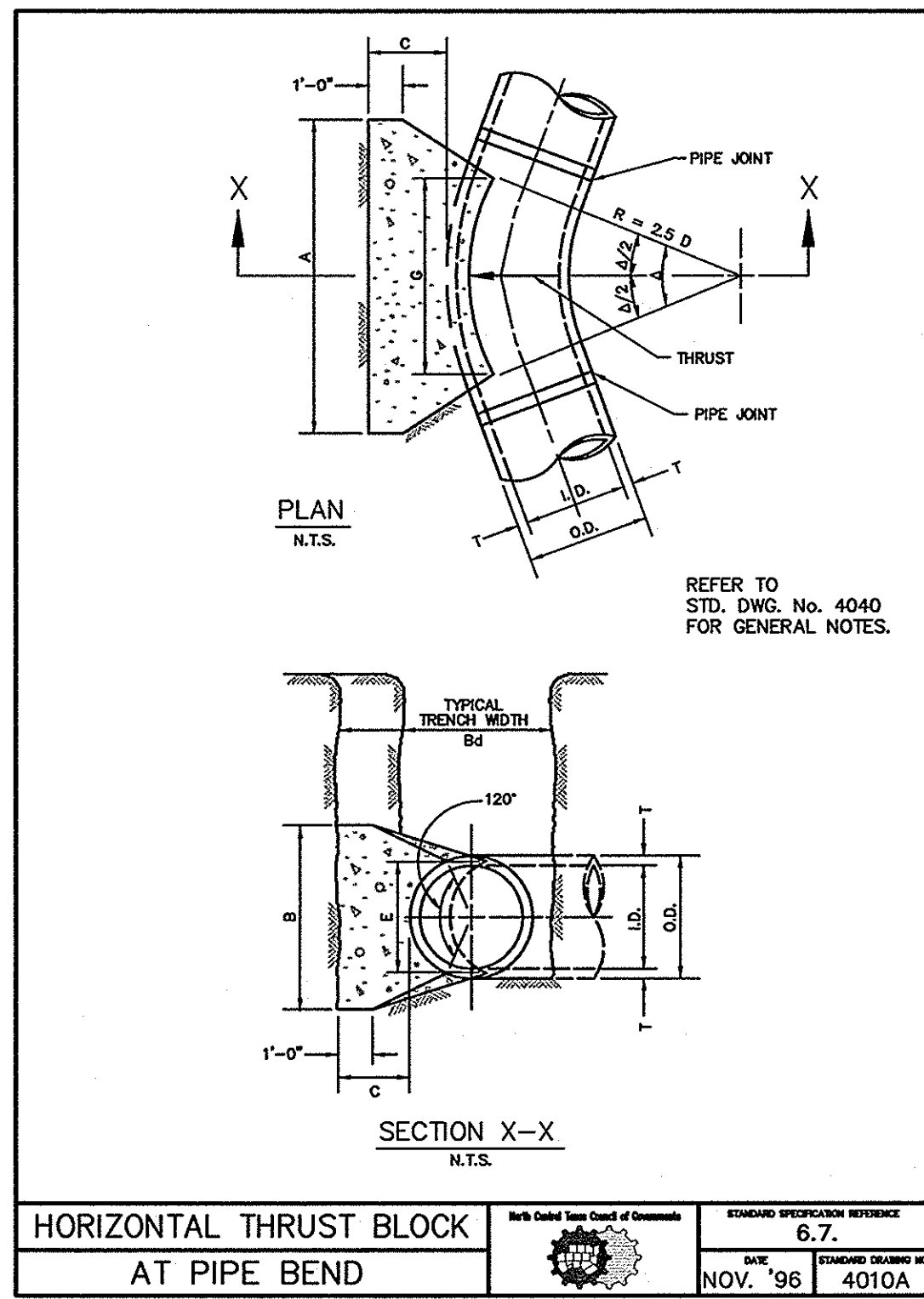
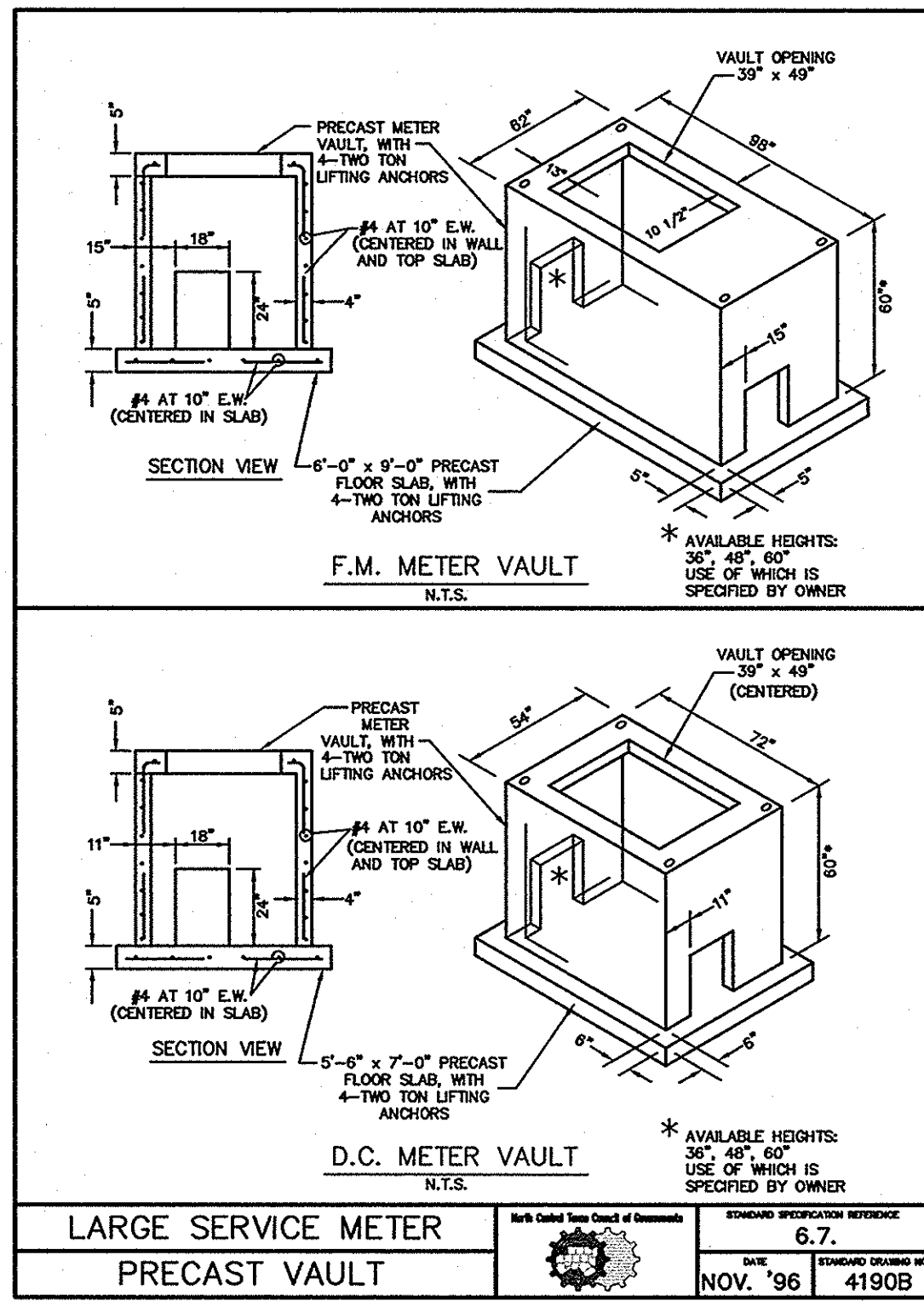
**TABLES OF DIMENSIONS AND QUANTITIES**

**HORIZONTAL THRUST BLOCK AT PIPE BEND**

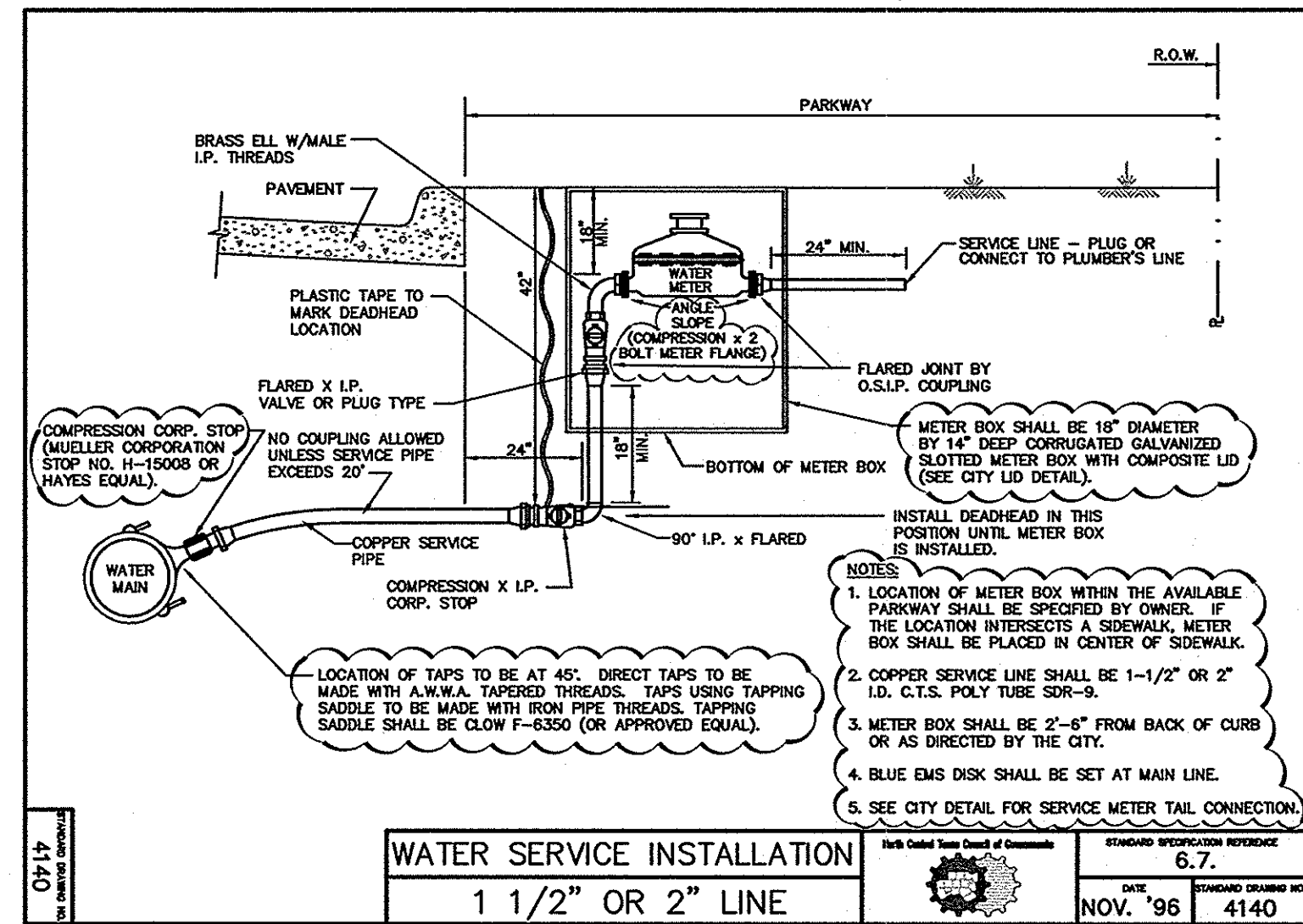
I.D. (IN.)	THRUST (TONS)	EARTH		ROCK	
		A (FT.)	B (FT.)	A (FT.)	B (FT.)
4.68	1.0	0.5	2.0	1.0	1.5
10.12	2.2	1.1	4.3	2.2	3.3
16.18	5.0	2.5	10.0	5.0	7.5
20.0	8.1	4.1	17.3	8.1	12.2
24.0	11.3	5.7	24.6	11.3	17.1
28.0	14.6	7.3	31.9	14.6	22.0
32.0	17.9	8.9	39.2	17.9	26.9
36.0	21.2	10.5	46.5	21.2	31.8
40.0	24.5	12.1	53.8	24.5	36.7
44.0	27.8	13.7	61.1	27.8	41.6
48.0	31.1	15.3	68.4	31.1	46.5
52.0	34.4	16.9	75.7	34.4	51.4
56.0	37.7	18.5	83.0	37.7	56.3
60.0	41.0	20.1	90.3	41.0	61.2
64.0	44.3	21.7	97.6	44.3	66.1
68.0	47.6	23.3	104.9	47.6	71.0
72.0	50.9	24.9	112.2	50.9	75.9
76.0	54.2	26.5	119.5	54.2	80.8
80.0	57.5	28.1	126.8	57.5	85.7
84.0	60.8	29.7	134.1	60.8	90.6
88.0	64.1	31.3	141.4	64.1	95.5
92.0	67.4	32.9	148.7	67.4	100.4
96.0	70.7	34.5	156.0	70.7	105.3

DATE: NOV. '96  
STANDARD DRAWING NO. 4010C

(MODIFIED TO REFLECT CITY AMENDMENTS TO NCTCOG DETAIL)



(MODIFIED TO REFLECT CITY AMENDMENTS TO NCTCOG DETAIL)



(MODIFIED TO REFLECT CITY AMENDMENTS TO NCTCOG DETAIL)

- NOTES:**
- REFERENCE CITY OF ROCKWALL STANDARD DRAWINGS FOR ALL OTHER APPLICABLE DETAILS.
  - REFERENCE CITY OF ROCKWALL AMENDMENTS TO THE NCTCOG STANDARD DRAWINGS (AS CLOUDED ON THE MODIFIED NCTCOG STANDARD DRAWINGS SHOWN ON THIS PAGE).

**RECORD DRAWING**  
THIS RECORD DRAWING HEREIN REFLECTS TO THE BEST OF THE DESIGN ENGINEERS KNOWLEDGE, THE APPROXIMATE LOCATION OF THE CONSTRUCTED WORK, USING INFORMATION AS PROVIDED BY THE CONTRACTORS AND SURVEYED GRADES.

Scale: \_\_\_\_\_

Designed by: \_\_\_\_\_

Drawn by: \_\_\_\_\_

Checked by: P.D.K.

Date: 05/25/04

Project No. 067051007

SHEET C-21 OF 24

Rockwall Commons  
Mixed Use Tract  
City of Rockwall, Texas

Kimley-Horn and Associates, Inc.  
Tel. No. (972) 335-9950  
Fax No. (972) 335-9779

9300 Wade Boulevard,  
Frisco, Texas 75035

Site 320

NOV 15 2004

PIETER D. KESSELS  
87775  
LICENSED PROFESSIONAL ENGINEER  
5-15-2004  
FOR CONSTRUCTION