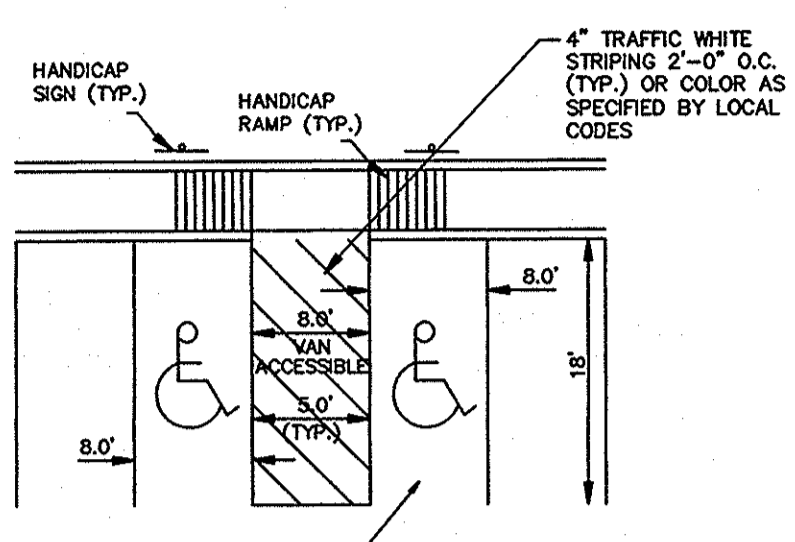
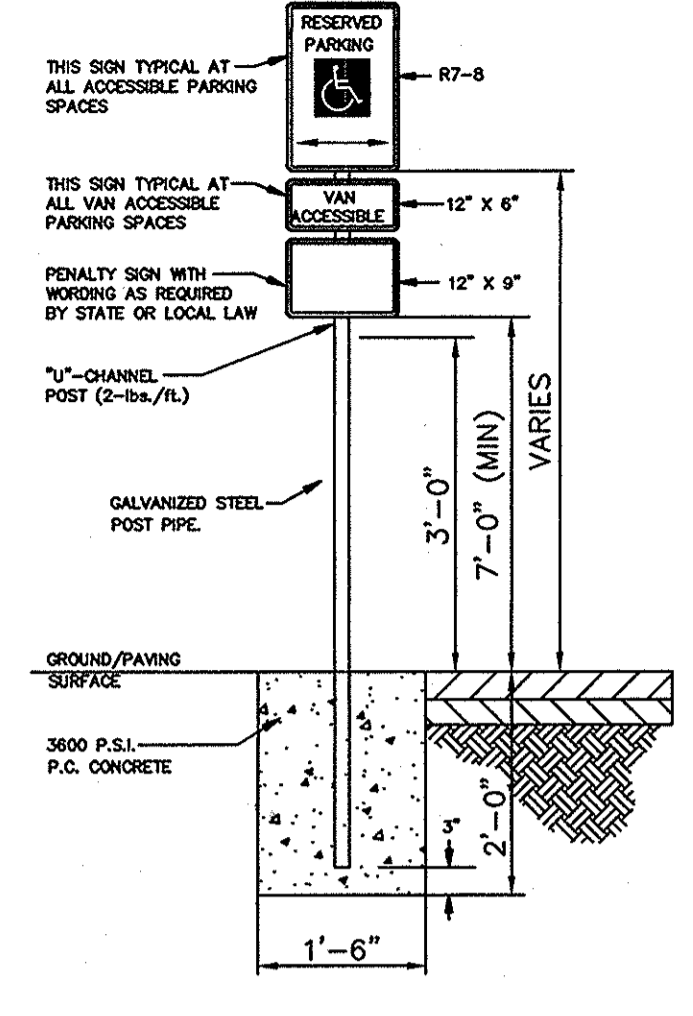


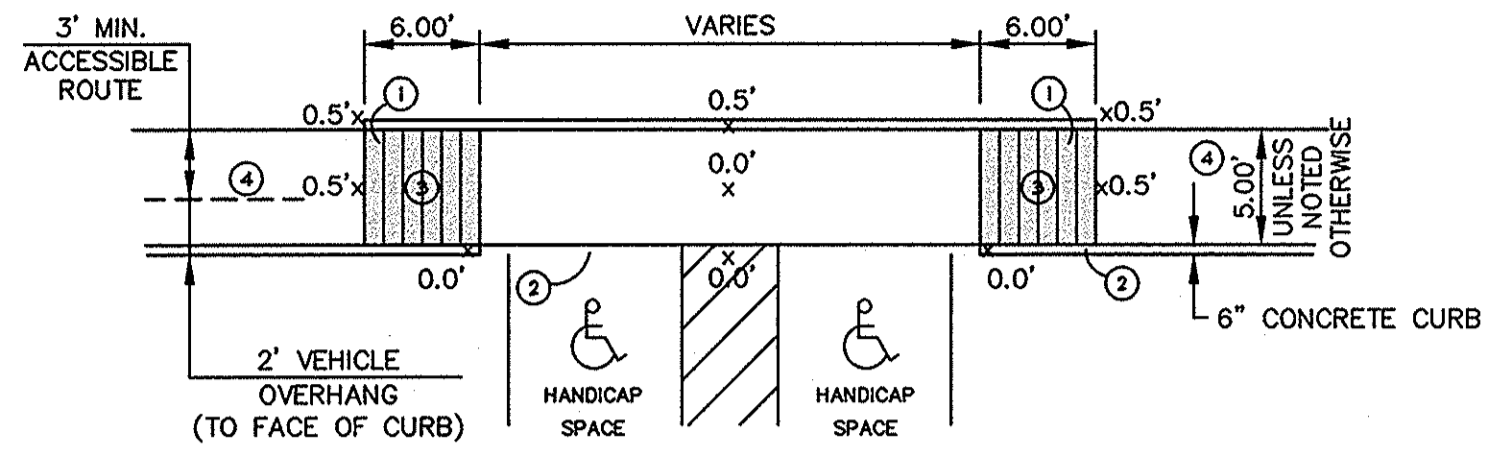
ACCESSIBLE PARKING SYMBOL
LOCATE AT EDGE OF PARKING SPACE UNLESS ACCOMPANIED BY "VAN" LETTERING



PARKING LOT STRIPING DETAILS



ACCESSIBLE PARKING SIGN
N.T.S.



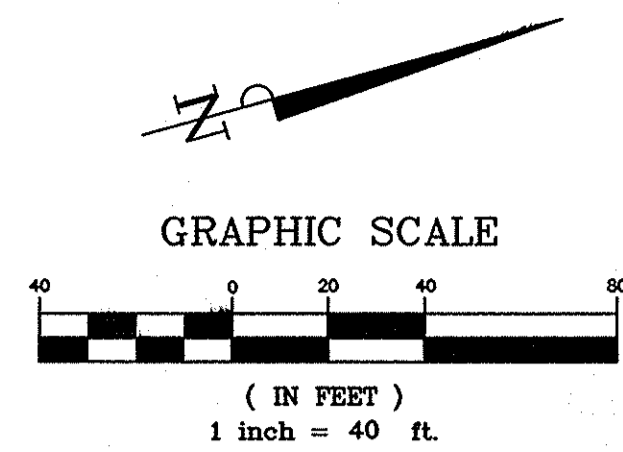
HANDICAP RAMP - MULTIPLE SPACES
N.T.S.

SITE DATA SUMMARY TABLE

ZONING	PD-1
PROPOSED USE	MIXED USE
LOT AREA / SQ. FT. AND AC (excluding row)	352,375 SQ. FT. / 8.09 AC
BLDG. AREA / HT. "COMM./RETAIL" (gross square footage)	5,750 SF. / 26'-0"
BLDG. AREA / HT. "RETAIL/OFFICE" (gross square footage)	28,500 SF. / 57'-10"
BLDG. AREA / HT. "MULTI-FAMILY/RETAIL/OFFICE" (gross square footage)	251,987 SF. / 58'-6"
PARKING REQUIRED PER "ULI SHARED PARKING" STUDY	485
PARKING PROVIDED SURFACE	273
PARKING PROVIDED GARAGE	212
HANDICAP REQUIRED	15
HANDICAP PROVIDED SURFACE	10
HANDICAP PROVIDED GARAGE	5
OPEN SPACE REQUIRED	1.6 AC (20% OF SITE)
OPEN SPACE PROVIDED	2.83 AC (35% OF SITE)

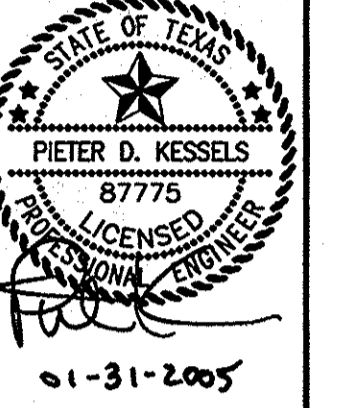
NOTE: "Handicap parking is provided in accordance with ADA Standards"

- NOTES:**
- ALL DIMENSIONS ARE TO BACK OF CURB UNLESS NOTED OTHERWISE
 - ALL RADII ARE 2.5' UNLESS NOTED OTHERWISE
 - ALL RADII ALONG FIRE LANE ARE MIN. 38.50' @ BACK OF CURB
 - ALL SURFACE PARKING SPACES ARE 9.0' WIDE X 20.0' DEEP OR 18.0' DEEP W/ A 2' OVERHANG. NO SHRUBS SHALL BE CONTAINED IN THIS 2' OVERHANG AREA. SHRUBS SHALL BE PLACED 4' FROM THE FACE OF CURB WHERE ADJACENT TO 18' PARKING SPACES.
 - REFER TO LANDSCAPE PLANS FOR ALL SIDEWALK, SCREENING, OPEN SPACE CALCULATIONS, AND MONUMENT SIGN LOCATIONS.
 - REFER TO SITE LIGHTING PLANS FOR ALL LIGHTING LOCATIONS, SPECIFICATIONS, AND PHOTOMETRIC DETAILS.
 - REFER TO BUILDING ELEVATION PLANS FOR ALL BUILDING SIGNAGE LOCATIONS AND DETAILS.
 - A 10'X10' OR 5'X10' WATER ESMT. TO BE PROVIDED AROUND EACH FIRE HYDRANT.
 - FDC TO BE INTEGRATED INTO BUILDING NO MORE THAN 100' FROM A FIRE HYDRANT.
 - ALL FIRELANES SHALL BE CONSTRUCTED PER CITY OF ROCKWALL SPECIFICATIONS.



REVISED ENTRANCES AND GRADING	JRY	APP
1/31/05		
	Date	Revisions

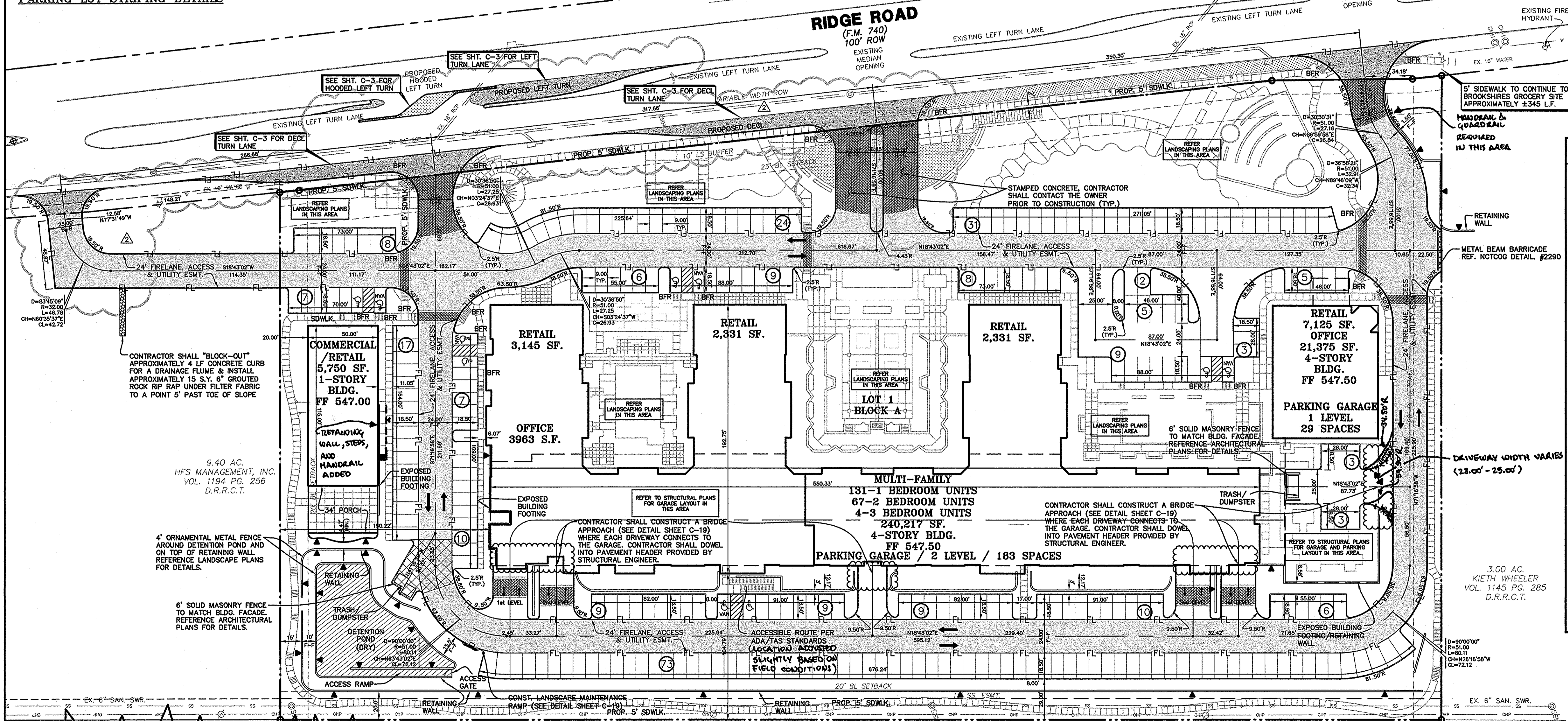
Kimley-Horn and Associates, Inc.
Tel. No. (972) 335-3880
Fax No. (972) 335-3779
9300 Wade Boulevard, Suite 320
Frisco, Texas 75035



**ROCKWALL COMMONS
MIXED USE TRACT
CITY OF ROCKWALL, TEXAS**

**PAVING &
DIMENSION CONTROL
PLAN**

Scale:	AS SHOWN
Designed by:	P.D.K.
Drawn by:	C.D.R.
Checked by:	P.D.K.
Date:	05/25/04
Project No.:	067051007
SHEET	C-2
OF	24



LEGEND

- 1xDOT HEAVY DUTY CONCRETE PAVEMENT
9"-5000 PSI (MIN.) REINFORCED CONCRETE PAVEMENT WITH NO. 4 BARS, 24" O.C.E.W., ON 2" H.M.A.C. AND 6" LIME STABILIZED SUBGRADE
- HEAVY DUTY CONCRETE PAVEMENT
7"-3600 PSI (MIN.) REINFORCED CONCRETE PAVEMENT WITH NO. 3 BARS, 24" O.C.E.W., ON 6" LIME STABILIZED SUBGRADE PER GEOTECHNICAL RECOMMENDATIONS
- MEDIUM DUTY CONCRETE PAVEMENT
6"-3600 PSI (MIN.) REINFORCED CONCRETE PAVEMENT WITH NO. 3 BARS, 24" O.C.E.W., ON 6" LIME STABILIZED SUBGRADE PER GEOTECHNICAL RECOMMENDATIONS
- MEDIUM DUTY DECORATIVE CONCRETE PAVEMENT
6"-3600 PSI (MIN.) REINFORCED CONCRETE PAVEMENT WITH NO. 3 BARS, 24" O.C.E.W., ON 6" LIME STABILIZED SUBGRADE PER GEOTECHNICAL RECOMMENDATIONS
- STANDARD DUTY CONCRETE PAVEMENT
5"-3500 PSI (MIN.) REINFORCED CONCRETE PAVEMENT WITH NO. 3 BARS, 24" O.C.E.W., ON 6" LIME STABILIZED SUBGRADE PER GEOTECHNICAL RECOMMENDATIONS
- FL FIRE LANE
- (8) NUMBER OF PARKING SPACES
- RETAINING WALL
- R RADIUS
- BFR BARRIER FREE RAMP
- FF FINISHED FLOOR ELEVATION
- ▲ EXPOSED FACE OF RETAINING WALL
- ▨ LIMITS OF DETENTION POND
- ⊕ GEOTECHNICAL BORE LOCATIONS
- ⊙ BENCHMARKS

THE CONTRACTOR SHALL FIELD VERIFY THE HORIZONTAL AND VERTICAL LOCATIONS OF ALL EXISTING UTILITIES PRIOR TO START OF CONSTRUCTION AND SHALL NOTIFY THE CONSTRUCTION MANAGER AND ENGINEER OF ANY CONFLICTS DISCOVERED. CONTRACTOR IS RESPONSIBLE FOR PROTECTING EXISTING UTILITIES (SHOWN OR NOT SHOWN) WITHIN SCOPE OF CONSTRUCTION. IF ANY EXISTING UTILITIES ARE DAMAGED, THE CONTRACTOR SHALL REPLACE THEM AT HIS OWN EXPENSE. CALL 1-800-DIG-TESS AT LEAST 72 HOURS PRIOR TO COMMENCING CONSTRUCTION IN VICINITY.

SEE SHEET C-1 FOR CONSTRUCTION NOTES

EXISTING M. K. & T. RAILROAD

RECORD DRAWING
THIS RECORD DRAWING HEREIN REFLECTS TO THE BEST OF THE DESIGN ENGINEERS KNOWLEDGE, THE APPROXIMATE LOCATION OF THE CONSTRUCTED WORK, USING INFORMATION AS PROVIDED BY THE CONTRACTORS AND SURVEYED GRADES.

BENCHMARKS:

ROCKWALL MONUMENT R500-1: CONC. MONUMENT IN CENTER MEDIAN OF SUMMIT RIDGE DRIVE, WEST OF RIDGE RD.	ELEV: 578.63
1" SET IN MEDIAN NOSE RIDGE ROAD ±193 FEET SOUTH OF SW PROPERTY CORNER.	ELEV: 546.15
1" SET ON INLET WEST CURB LINE RIDGE ROAD, ±155 SOUTH OF NW PROPERTY CORNER	ELEV: 553.07