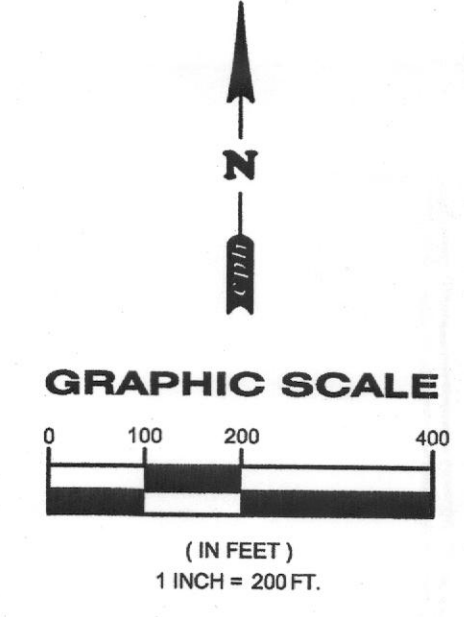


VICINITY MAP  
 N.T.S.



**POST - DRAINAGE AREA MAP LEGEND**

- PROPERTY LINE
  - STORM SEWER PIPE CENTERLINE
  - 611 — EXISTING CONTOUR
  - MAJOR DRAINAGE AREA
- 1  
 XX AC.  
 XX ac  
 — NODE I.D.  
 — AREA IN ACRES  
 — CFS  
 — FLOW ARROW

**EXISTING OFFSITE DRAINAGE AREA**

AREA DESIGNATION	TIME OF CONCENTRATION (MINUTES)	INTENSITY IN/HR.	FULLY DEVELOPED RUN-OFF COEFFICIENT	ACRES (AC.)	FULLY DEVELOPED Q100 (CFS)	DRAINS TO
O-1	18.83	9	0.9	66.83	541.32	ALL DRAINS TO 9'x6' RCBC
O-2	10	9.8	0.9	4.86	42.87	ALL DRAINS TO 9'x6' RCBC
O-3	10	9.8	0.9	2.16	19.05	ALL DRAINS TO 9'x6' RCBC

**Tc CALCULATIONS FOR OFFSITE AREA**

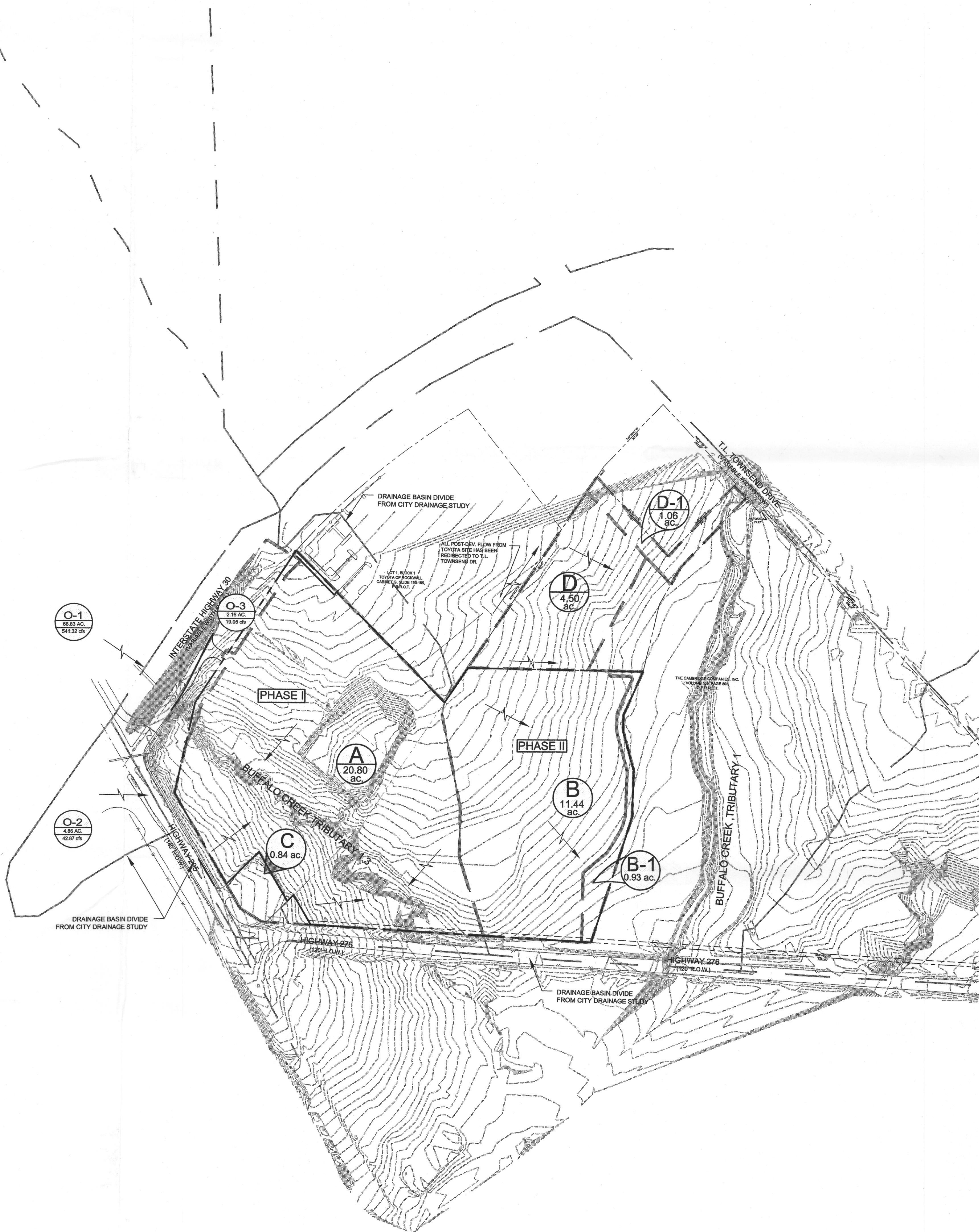
TOTAL LENGTH OF PIPE FROM UPSTREAM INLET TO EXITING OUTFALL = 2,049  
 TOTAL TIME AT 5 FPS = (2049/5) = 410 SEC. = 6.83 MIN.  
 TOTAL Tc = 10+6.83 = 16.83 MIN.  
 Int @ 16.83 MIN. = 9.0  
 Q = CIA = 9.0 X 0.9 X 66.83 = 541.32 CFS.  
 TOTAL EXISTING FLOW FOR BOX CULVERT DRAINAGE = 541.32 + 42.87 + 19.05 = **603.24 CFS.**

NOTE:  
 T. FLOWS FOR TXDOT R.O.W. OBTAINED FROM PLANS FOR S.H. 205 DATED 3-31-2006

**EXISTING DRAINAGE AREA**

AREA DESIGNATION	TIME OF CONCENTRATION (MINUTES)	INTENSITY IN/HR.	FULLY DEVELOPED RUN-OFF COEFFICIENT	ACRES (AC.)	FULLY DEVELOPED Q100 (CFS)	DRAINS TO
A	20	8.3	0.35	20.8	60.42	BUFFALO CREEK TRIBUTARY
B	20	8.3	0.35	11.44	33.23	BUFFALO CREEK TRIBUTARY
B-1	20	8.3	0.35	0.93	2.70	BUFFALO CREEK TRIBUTARY
C	10	9.8	0.9	0.84	7.41	BUFFALO CREEK TRIBUTARY
D	20	8.3	0.35	4.5	13.07	BUFFALO CREEK TRIBUTARY
D-1	20	8.3	0.35	1.06	3.09	BUFFALO CREEK TRIBUTARY

TOTAL CONTRIBUTORY FLOW INTO TRIBUTARY 1.3 = 60.42 + 7.41 = 67.83 CFS.



W.A.S.	W.A.S.	W.A.S.	W.A.S.	W.A.S.	W.A.S.	W.A.S.	W.A.S.	W.A.S.	By
05/29/08	05/29/08	05/29/08	05/29/08	05/29/08	05/29/08	05/29/08	05/29/08	05/29/08	By
REVIS PER CITY COMMENTS 05/29/08	NO COMMENTS TO THIS SHEET	NO COMMENTS TO THIS SHEET	NO COMMENTS TO THIS SHEET	NO COMMENTS TO THIS SHEET	NO COMMENTS TO THIS SHEET	NO COMMENTS TO THIS SHEET	NO COMMENTS TO THIS SHEET	NO COMMENTS TO THIS SHEET	Revision

Date	No.	File
06/10/08	1	DAM PH1

PRE - DRAINAGE AREA MAP (INC. LOT 8)  
**ROCKWALL CENTRE CORNERS**  
 INTERSTATE HIGHWAY 30 AND S.H. 205  
 CITY OF ROCKWALL, ROCKWALL COUNTY, TEXAS



THE SEAL APPEARING ON THIS DOCUMENT WAS AUTHORIZED BY WILLIAM A. STUEBER, P.E. 90436 ON 06/23/2008. ALTERATION OF A SEALED DOCUMENT TO THE RESPONSIBLE ENGINEER IS AN OFFENSE UNDER THE TEXAS ENGINEERING PRACTICE ACT.

**FOR REVIEW FOR PERMITTING PURPOSES NOT FOR CONSTRUCTION**

\*NOTICE\*  
 THE SIZE OF THIS PLAN MAY HAVE BEEN SLIGHTLY ALTERED BY REPRODUCTION PROCESSES. THIS MUST BE CONSIDERED WHEN SCALING ANY REPRODUCED PLAN FOR THE PURPOSE OF COLLECTING DATA.