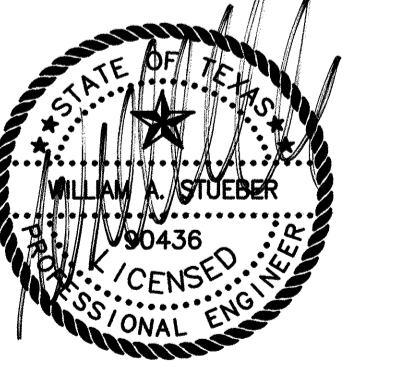
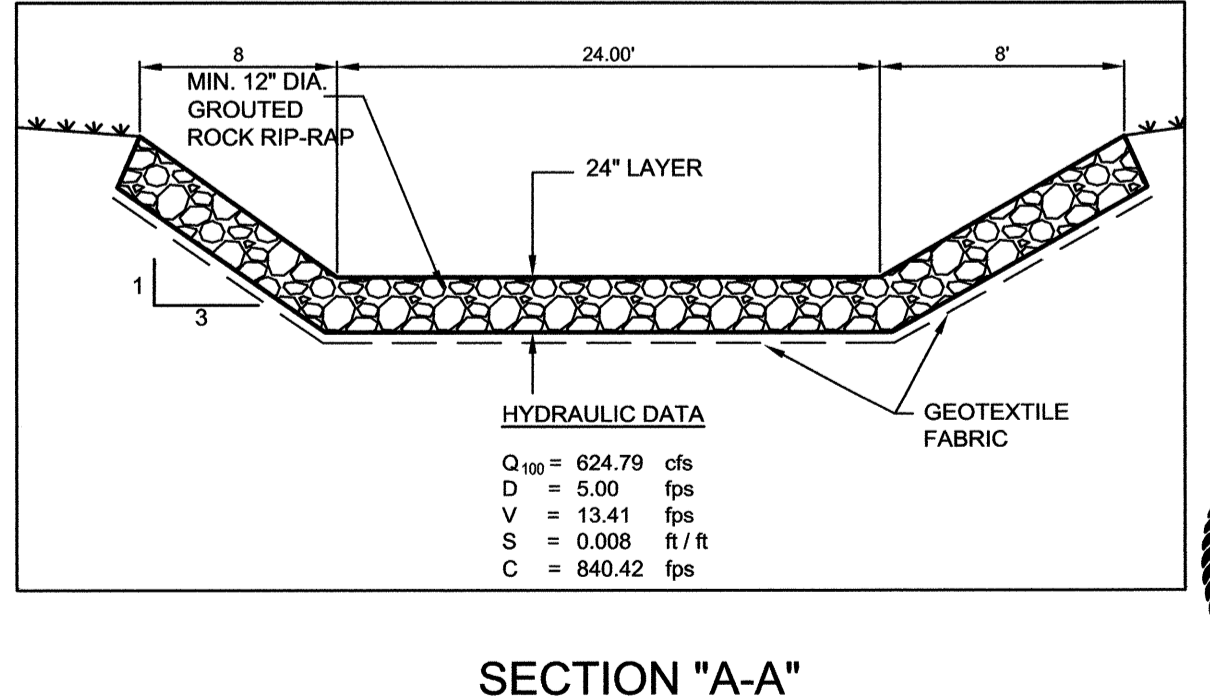
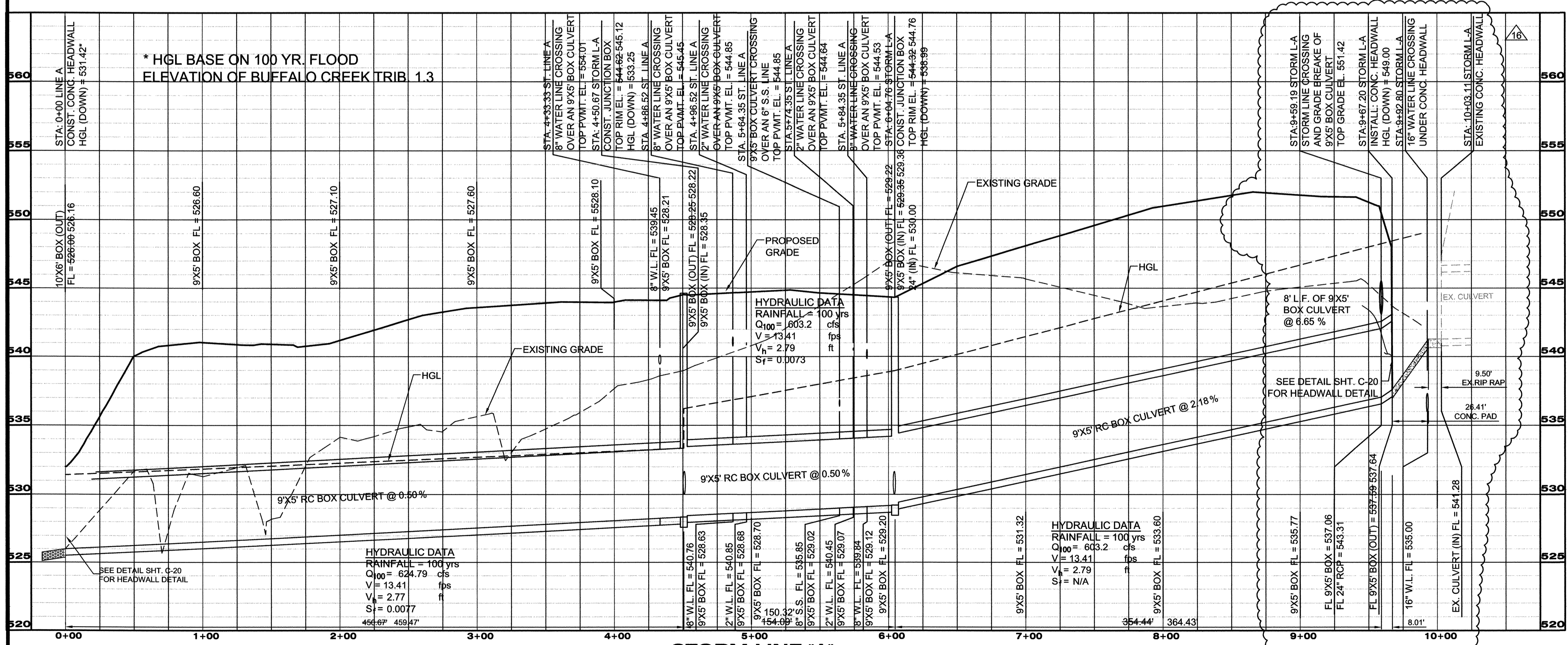
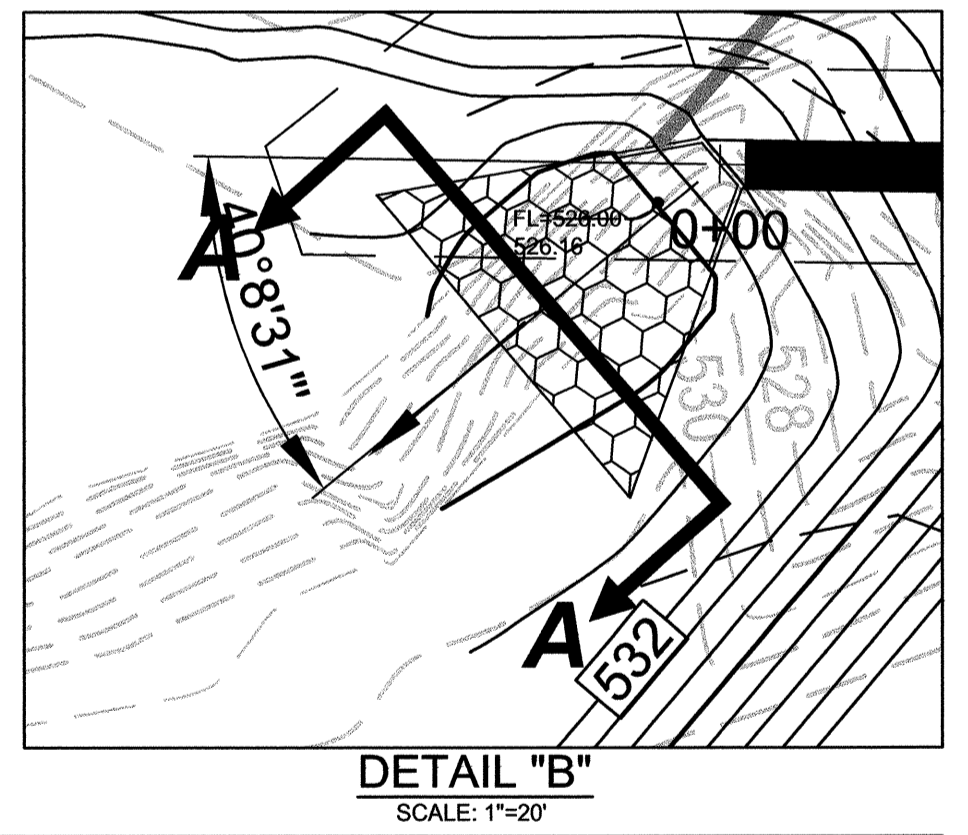
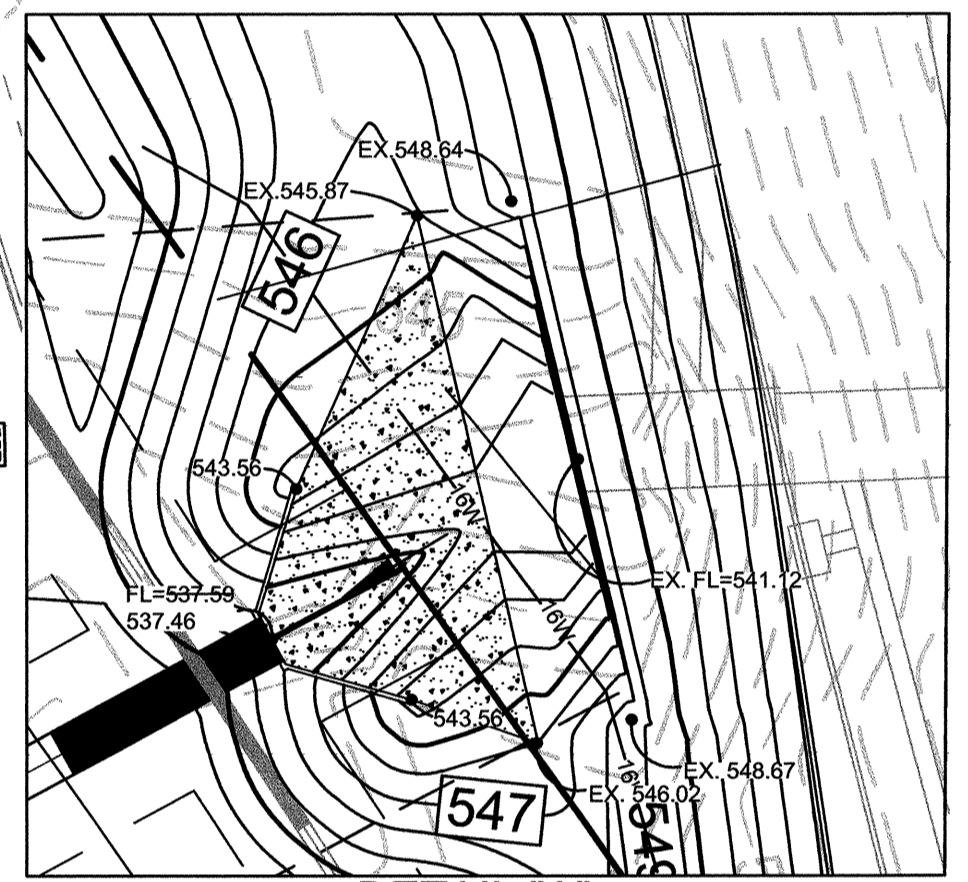
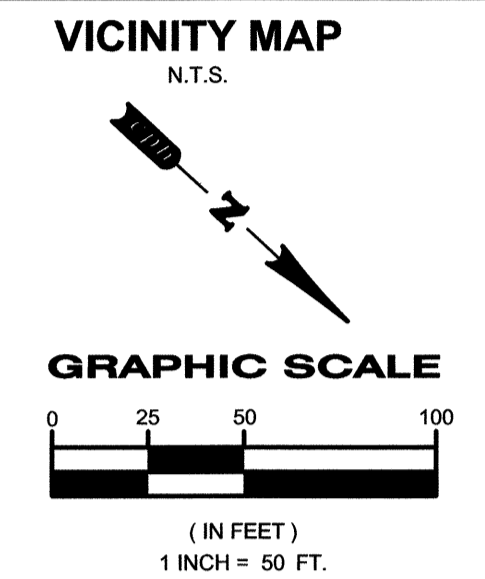


cph
 5728 LBJ Freeway
 Suite 330
 Dallas, Texas 75240
 Phone: 972.490.1515
 Fax: 972.490.1517

Certificate of
 Authorization No. F4830
 © 2008

Engineers
 Surveyors
 Architects
 Planners
 Landscape Architects
 Environmental Scientists
 Construction
 Management
 Design / Build



By	Date	Revision
WAS	05/04/08	PER AS-BUILTS
WAS	01/09/08	NO CHANGES TO THIS SHEET
WAS	11/06/08	NO CHANGES TO THIS SHEET
WAS	08/23/08	PER COWI AND RFI #3
WAS	08/04/08	NO CHANGES TO THIS SHEET
WAS	08/26/08	NO CHANGES TO THIS SHEET
WAS	06/03/08	PER CITY COMMENTS 5/29/08
WAS	05/19/08	NO CHANGES TO THIS SHEET
WAS	03/07/08	NO CHANGES TO THIS SHEET
WAS	12/05/07	NO CHANGES TO THIS SHEET
WAS	10/31/07	PER CITY COMMENTS 10/22/07
By	No.	Date
WAS	03/05/08	NO CHANGES TO THIS SHEET
WAS	11/21/08	NO CHANGES TO THIS SHEET
WAS	10/03/08	NO CHANGES TO THIS SHEET
WAS	09/08/08	NO CHANGES TO THIS SHEET
WAS	06/30/08	NO CHANGES TO THIS SHEET
WAS	06/10/08	NO CHANGES TO THIS SHEET
WAS	05/23/08	PER CITY COMMENTS 5/2/08
WAS	05/06/08	PER COSTCO PLANS
WAS	01/29/08	NO CHANGES TO THIS SHEET
WAS	11/15/07	NO CHANGES TO THIS SHEET
WAS	10/19/2007	PER CLIENTS NEW SITE LAYOUT
By	No.	Date
WAS	03/05/08	NO CHANGES TO THIS SHEET
WAS	11/21/08	NO CHANGES TO THIS SHEET
WAS	10/03/08	NO CHANGES TO THIS SHEET
WAS	09/08/08	NO CHANGES TO THIS SHEET
WAS	06/30/08	NO CHANGES TO THIS SHEET
WAS	06/10/08	NO CHANGES TO THIS SHEET
WAS	05/23/08	PER CITY COMMENTS 5/2/08
WAS	05/06/08	PER COSTCO PLANS
WAS	01/29/08	NO CHANGES TO THIS SHEET
WAS	11/15/07	NO CHANGES TO THIS SHEET
WAS	10/19/2007	PER CLIENTS NEW SITE LAYOUT
By	No.	Date
WAS	03/05/08	NO CHANGES TO THIS SHEET
WAS	11/21/08	NO CHANGES TO THIS SHEET
WAS	10/03/08	NO CHANGES TO THIS SHEET
WAS	09/08/08	NO CHANGES TO THIS SHEET
WAS	06/30/08	NO CHANGES TO THIS SHEET
WAS	06/10/08	NO CHANGES TO THIS SHEET
WAS	05/23/08	PER CITY COMMENTS 5/2/08
WAS	05/06/08	PER COSTCO PLANS
WAS	01/29/08	NO CHANGES TO THIS SHEET
WAS	11/15/07	NO CHANGES TO THIS SHEET
WAS	10/19/2007	PER CLIENTS NEW SITE LAYOUT
By	No.	Date

Designed by:	Drawn by:	Checked by:	Approved by:	Scale:	Date:	Job No.:	File:
HMH	HMH	WAS	WAS	AS SHOWN	10/19/2007	S13217	CULVT

**9' X 5' DRAINAGE BOX CULVERT
 PLAN AND PROFILE**

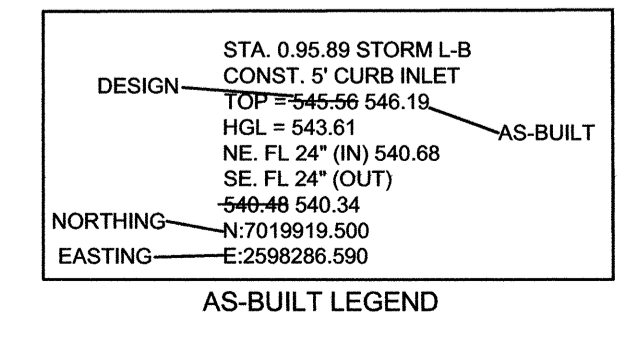
ROCKWALL CENTRE CORNERS
 INTERSTATE HIGHWAY 30 AND S.H. 205
 CITY OF ROCKWALL, ROCKWALL COUNTY, TEXAS

Sheet No.
C-13

RECORD DRAWING
 TO THE BEST OF OUR KNOWLEDGE CPH ENGINEERS, INC. HEREBY STATES THAT THIS PLAN IS A REPRESENTATION OF THE AS-BUILT CONDITIONS OF THE SUBJECT PROJECT. THE INFORMATION PRESENTED IS BASED ON INFORMATION PROVIDED BY THE CONTRACTOR ALONG WITH DATA PROVIDED BY THE PROJECT LAND SURVEYOR.

THE SEAL APPEARING ON THIS DOCUMENT WAS AUTHORIZED BY WILLIAM A. STUEBER, P.E. 90436 ON 05/04/2009. ALTERATION OF A SEALED DOCUMENT TO THE RESPONSIBLE ENGINEER IS AN OFFENSE UNDER THE TEXAS ENGINEERING PRACTICE ACT.

"NOTICE"
 THE SIZE OF THIS PLAN MAY HAVE BEEN SLIGHTLY ALTERED BY REPRODUCTION PROCESSES. THIS MUST BE CONSIDERED WHEN SCALING ANY REPRODUCED PLAN FOR THE PURPOSE OF COLLECTING DATA.



HMCAMBER - 05/04/2009 - 10:41AM - DRAWING SCALE: 50' - J:\S13217\ST165\ROCKWALL\DESIGN\RECORD DRAWINGS\S13217 - STORM CULVERT P&P.DWG