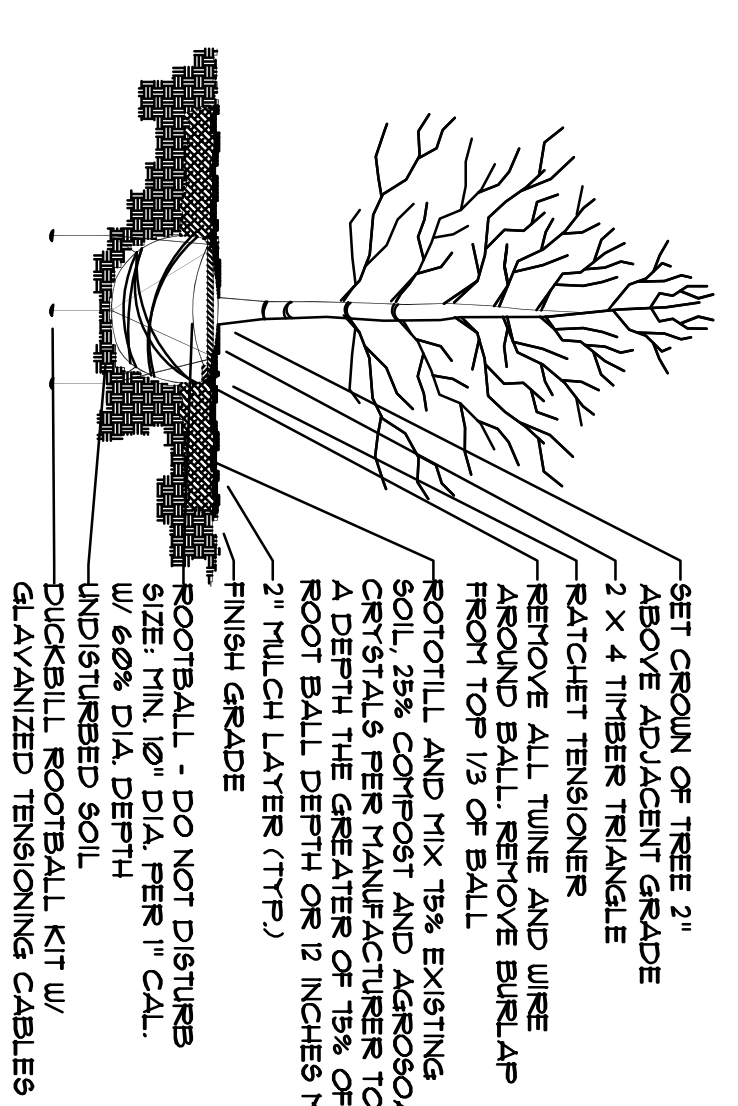
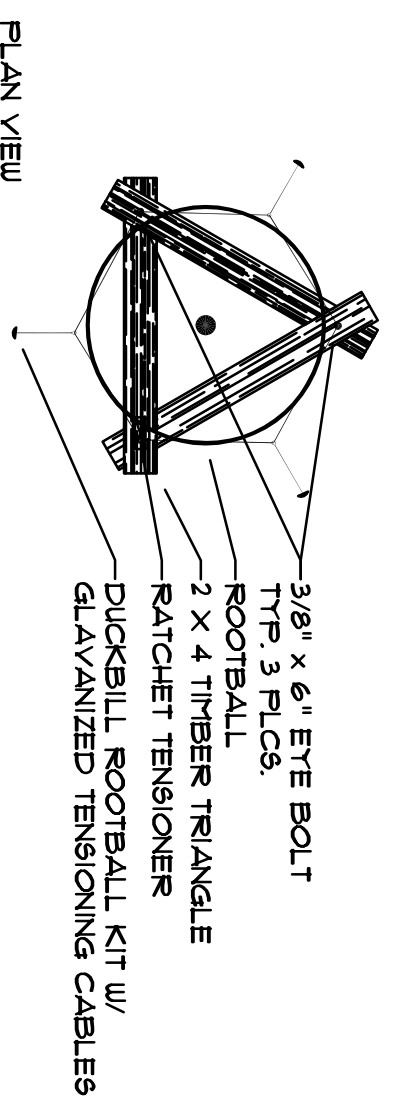


SYM	BOTANICAL NAME	COMMON NAME	QUANTITY	SIZE	NOTES
PLANT SCHEDULE					
LE	Ulmus parviflora	Lacebark Elm	6 EA.	4" cal., 12'-14" H., 6'-7" Spread	B. & B. Single trunk, Well branched with Central Leader, 6' branching height
LO	Quercus virginiana	Live Oak	6 EA.	#65.4" cal. Min., 12' H. Min., 6' Spread Min.	Container, Single trunk, Well branched with B. & B., Single trunk, Well branched with Central Leader, Speciman
RB	Cercis canadensis	Texas Redbud	5 EA.	5 EA. Min.	Central Leader, Speciman
SHRUBS					
DBH	Ilex cornuta Burfordii	Dwarf Burford Holly	55 EA.	#5.36" min. H., 24" min. spread	Container, Well branched full to ground, Speciman, Plant 36" on center
IH	Raphanopholis indica	Indian Hawthorn	45 EA.	#5.36" min. H., 24" min. spread	Container, Well branched full to ground, Speciman, Plant 36" on center
KR	Rosa x Radrazz	Knot Out Rose	25 EA.	#3.36" min. H., 24" min. spread	Container, Well branched full to ground, Plant 36" on center
MN	Nandina domestica	Moorhays Nandina	15 EA.	#2.18" min. H., 12" min. spread	Container, Well branched full to ground, Plant 30" on center
Misc	Cynodon dactylon	Bermuda Grass	16,320 Sq. Ft.	Solid Sod	Staggered light joints, sand filled and rolled
LS	Liriodie spicata	Creeping Liriodie	450 EA.	4" pot	Full, Plant 12" on center
MP	Ruellia mexicana	Mexican Ruellia	82 EA.	4" pot	Full, Plant 18" on center
SE	Riverston	Steel Edging	222 Ln. Ft.	118" x 4" Green	Straked and set 1" above adjacent paving

ITEM	REQUIRED	PROVIDED
Landscape Buffer	Yes	Yes
10 Ft. Width		
S.H. 205 Overlay District		
Three (3) 4" cal. Shade Trees per 100 Ln. Ft.	2 Proposed Lacebark Elm, 1 Live Oak & 2 Existing	
Four (4) 48" Ornamental Trees per 100 Ln. Ft.	3 Proposed Redbud & 5 Existing	
Street Landscape		
One 3" cal. tree per 50 Ln. Ft.		
Ralph Hall Parkway	5 EA.	4 Proposed Lacebark Elm & 1 Existing
Paving Lanes	6 EA.	6 Proposed Live Oak
10 parking spaces	6 EA.	
80 ft. max from tree trunk	Yes	Yes
Landscape Area	6,646 Sq. Ft.	27,785 Sq. Ft.
15% of Site (44,309 Sq. Ft.)	5,539 Sq. Ft.	10,910 Sq. Ft.
50% of Required Landscape Area in Front Yard		

- NOTE:
- One (1) 4" cal. Shade Tree not provided due to existing Pole Sign and 15 Ft. Utility Easement.
 - Two (2) Ornamental Trees installed in lawn area adjacent to building due to existing Pole Sign and 15 Ft. Utility Easement.



TREE PLANTING DETAIL

7 1/2" CAL. OR LARGER (MIN. 2" MIN. CAL. SHALL BE MIN. 2")

CHECK SPECIFICATION RATE. INSTALL TREE SUMP IF UNACCEPTABLE FOR GUARANTEE

USAP BED OAK, LIVE OAK & CADDOPARLE TREE TRUNKS W/ BURL AP STARTING AT BASE OF TRUNK EXTENDING UP TO BOTTOM BRANCHING.

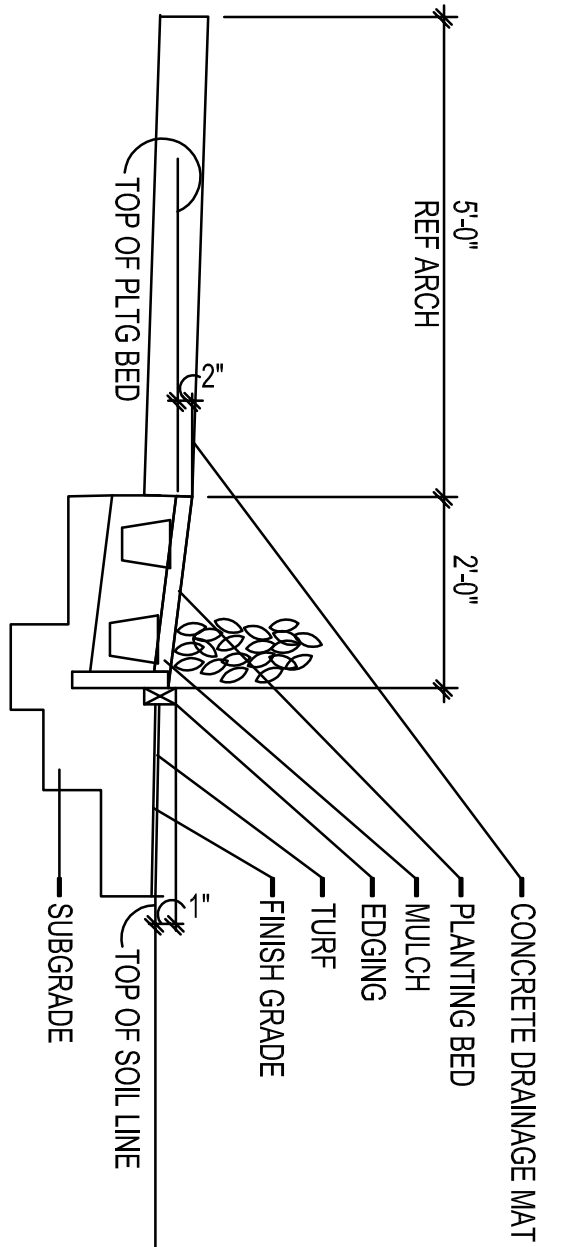
TYPICAL TREE PLANTING PIT BED PREPARATION MINIMUMS: USE THE GREATER OF CALIPER OR BALL DIAMETER

B&B BALLS REQUIRE 10:1 BALL TO CALIPER RATIO MINIMUM CONTAINER BALLS MAY BE SMALLER, SO USE CALIPER SIZE

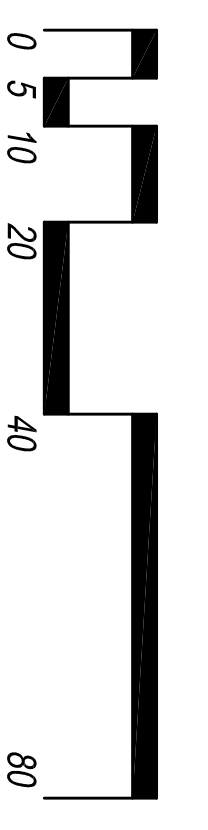
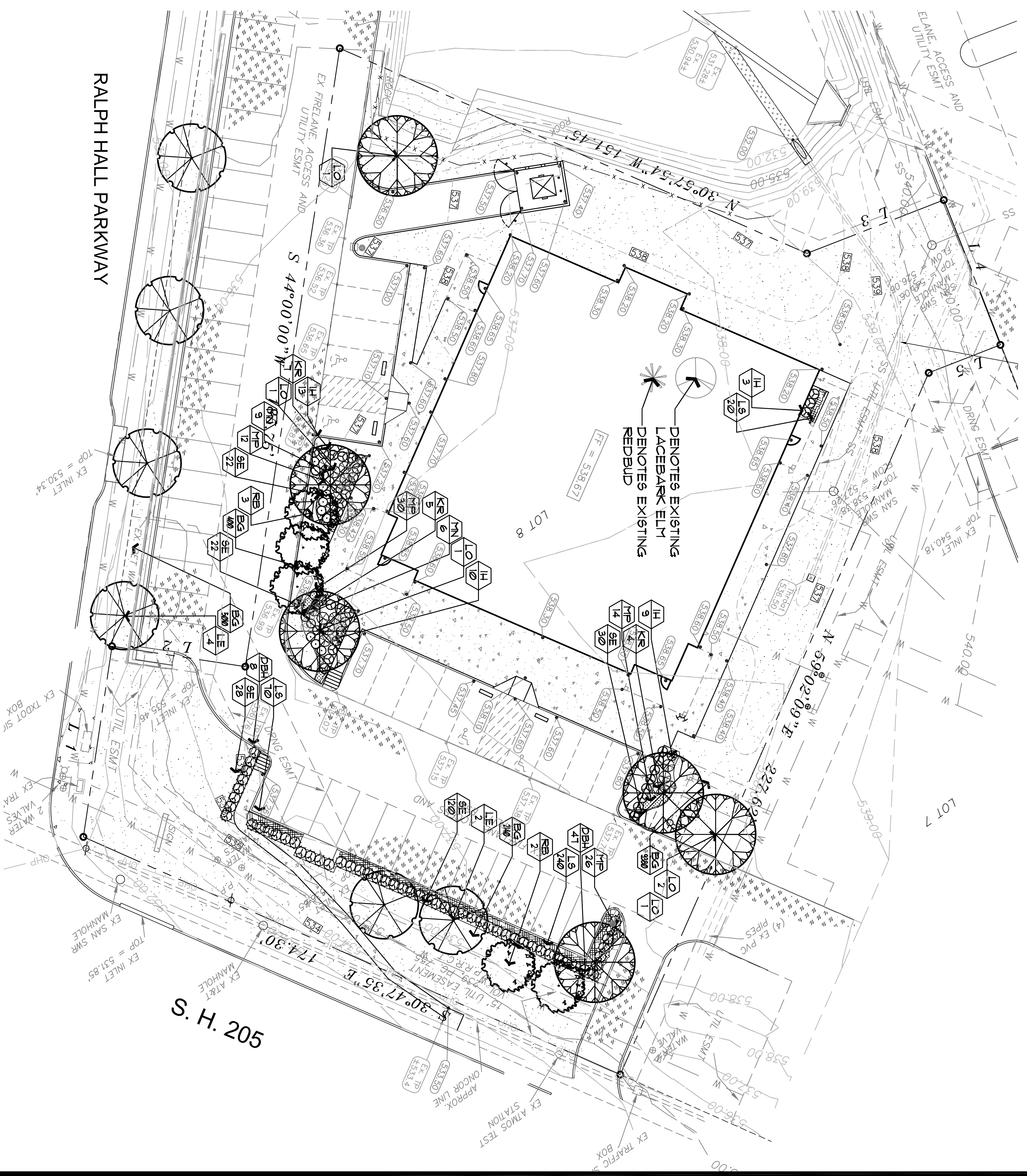
S Tree Size Min. Root B-D=BX 10
 Calliper from Ball Dia. Min. Root B-D=BX 60%
 S=3" B=30" BD=36"
 S=6" B=60" BD=36"

PLANTING NOTES:

- Submit a construction schedule of work to be approved by Landscape Architect and Owner. Failure to submit schedule may result in Landscape Architect stopping construction until submitted. No extensions of time will be considered for failure to promptly submit schedule.
- Notify Landscape Architect 48 hours in advance of commencement of work to coordinate project inspection schedules.
- Locate existing underground utilities and obstructions prior to commencing work. Repair damage to utilities resulting from the installation of the work at no additional cost to Owner.
- Notify Landscape Architect immediately upon encountering any unknown obstructions, grade differences or conditions not indicated on drawings. Make necessary revisions as required to conform to plans and specifications due to failure to give such notification.
- Coordinate with other trades and subcontractors as required to accomplish the planting operation.
- Plant materials shall be tagged or approved at site by Landscape Architect prior to installation. Install plant material free of pest and diseases. Guarantee plant material for a period of 365 calendar days from date of issuance of final acceptance by Landscape Architect. Landscape Architect's approval prior to installation. Notify Landscape Architect of any plant material issues. Failure to notify Landscape Architect will result in Contractor's liability to relocate materials at no additional expense to Owner.
- Excavate bed areas to a depth of 4 inches, backfill with 4 inches of Acid Gro Complete mix as manufactured by Soil Building Systems and rototill to a depth of 12 inches producing a homogeneous mixture.
- Final locations of plant material shall be subject to approval by Landscape Architect. Install groundcover 12 inches from the edge of shrubs and tree root balls and 4 inches from edge of paving, walls and other structures.
- Backfill tree and shrub pits with one part compost as manufactured by Soil Building Systems and two parts structure.
- existing soil.
- State tree locations and acquire written approval from Landscape Architect prior to installation of irrigation system. Do not locate trees within 10 feet of any irrigation rotary spray head. Install trees in areas covered by irrigation system. Provide supplemental watering as required until final acceptance by Landscape Architect. Locate trees 4 feet minimum from walls, fences, property lines and other trees. Landscape Architect will result in Contractor's liability to relocate trees at no additional expense to Owner.
- State trees immediately upon installation and within same day as planted.
- Much painting beds and tree pits with shredded hardwood mulch.
- Provide full service maintenance of landscape within project scope for a period of four (4) months, 120 calendar days, from date of issuance of final acceptance by Landscape Architect. Failure to properly maintain landscape and irrigation system will result in extending the guarantee and maintenance period at no additional expense to Owner.
- All landscape areas to be watered by an automatic landscape irrigation system.



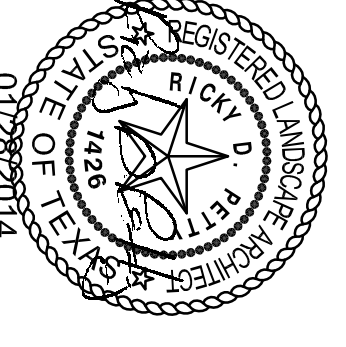
TYPICAL PLANTING BED SECTION
SCALE: NONE



1 LANDSCAPE PLAN
SCALE: 1" = 20'-0"

PROJECT NAME	HURST OFFICE
PROJECT NUMBER	14-006
REVISIONS	
	CITY COMMENTS 1/28/14
	CITY COMMENTS 2/14/14

ROCKWALL BUSINESS PARK EAST LOT 8
RALPH HALL PKWY AT SH 205
ROCKWALL, TEXAS



PROJECT NAME: HURST OFFICE
 LOT 8
 ROCKWALL
 BUSINESS PARK
 EAST SUBDIVISION
 ROCKWALL, TEXAS
 LANDSCAPE ARCHITECT
 7720 ALTO CARO DRIVE
 DALLAS, TEXAS 75248
 PHONE: (214) 543-5265
 e-mail: rdpetty@tkr.com

TITLE: LANDSCAPE PLAN
 DATE: JANUARY 28, 2014
 SCALE: 1" = 20'-0"
 SHEET: L-1