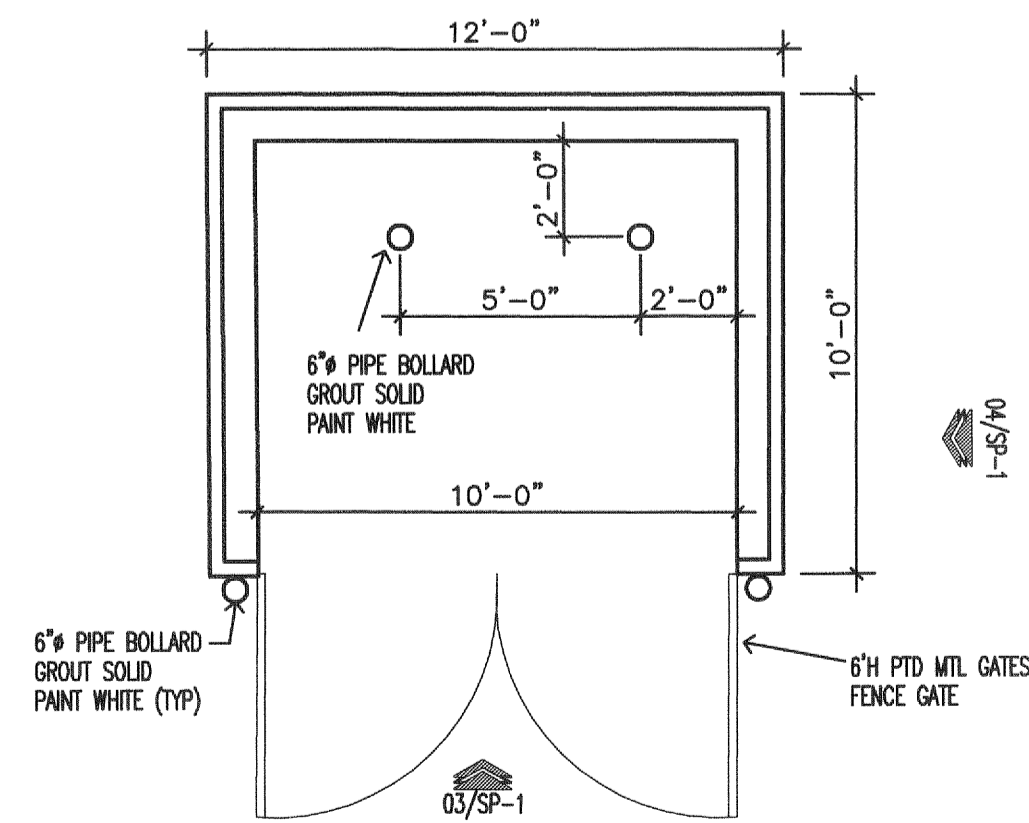
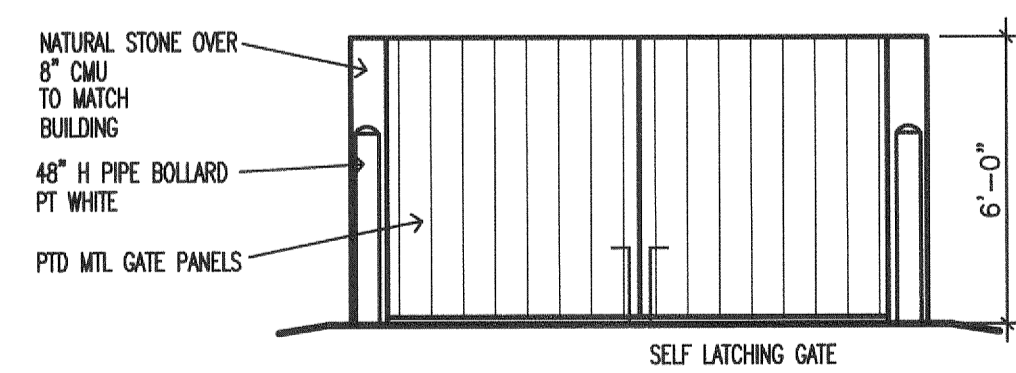


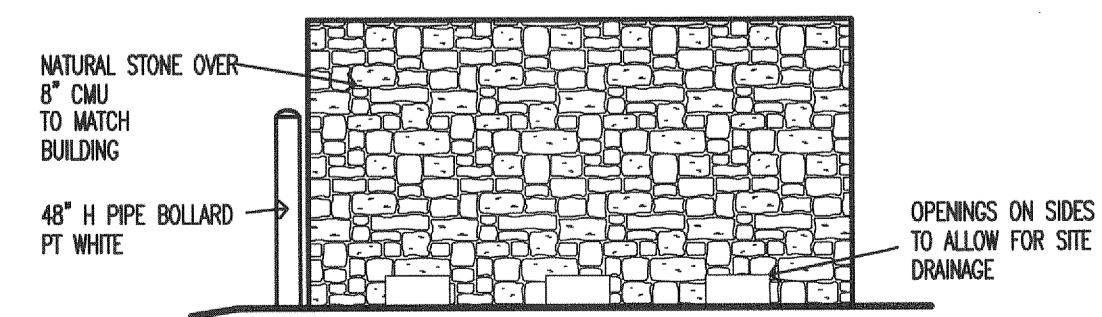
NOTE:
ALL SITE UTILITIES TO BE
VERIFIED ON CIVIL PLANS.



2 dumpster enclosure plan
SCALE: 1/4" = 1'-0"

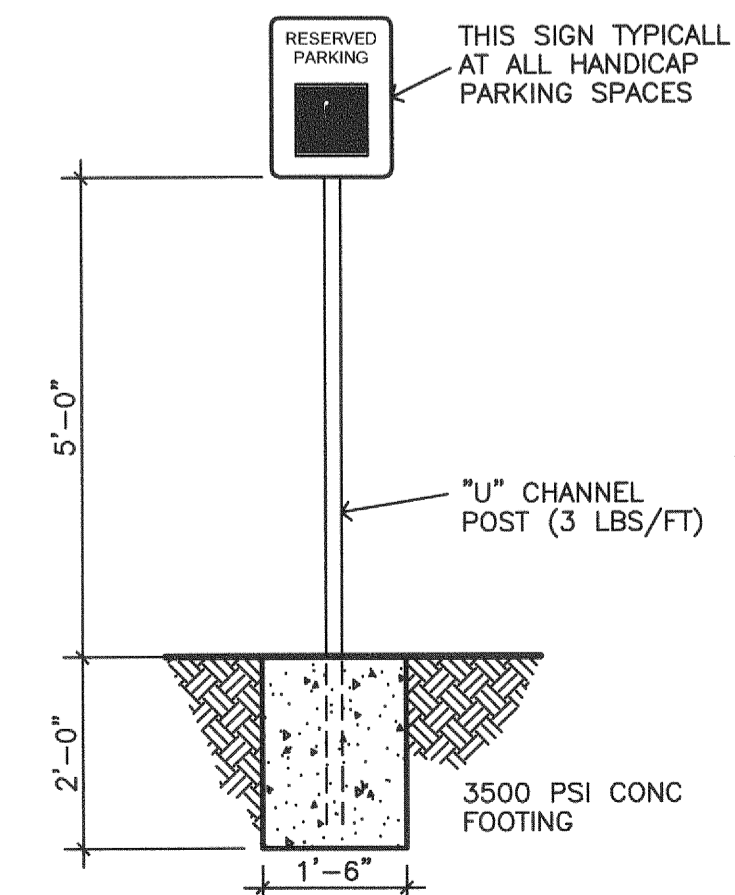


3 dumpster elevation
SCALE: 1/4" = 1'-0"

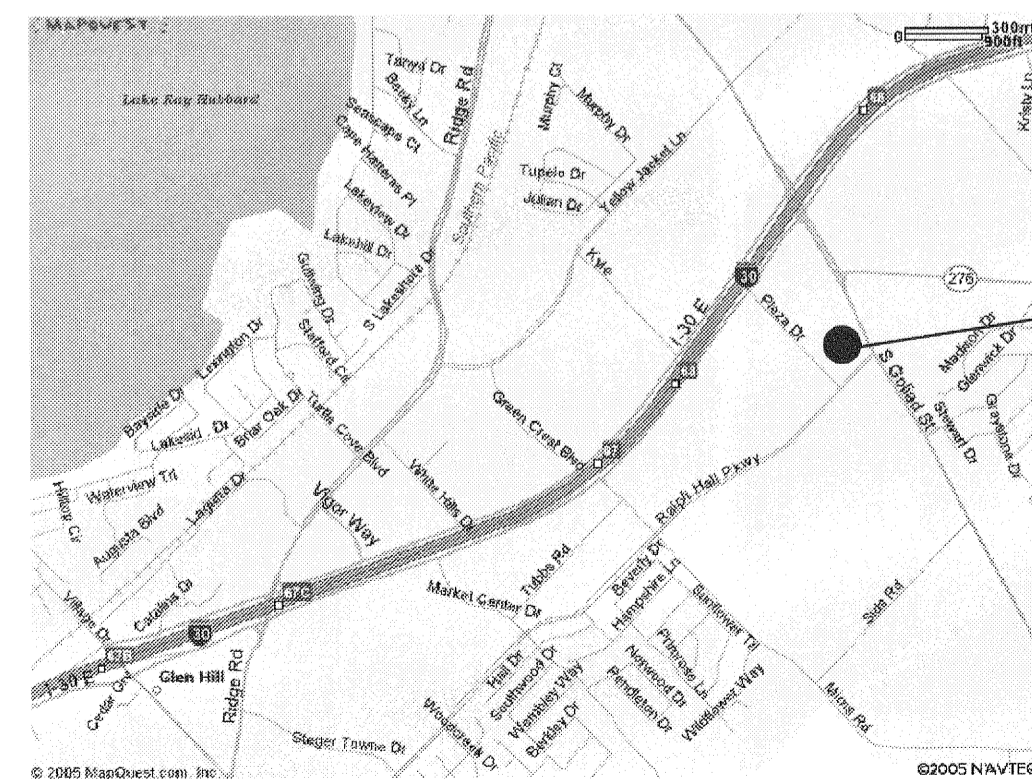


4 dumpster elevation (typ side)
SCALE: 1/4" = 1'-0"

1 site plan
SCALE: 1" = 20'



5 handicap parking sign
SCALE: 1/2" = 1'-0"



6 location map

SITE INFORMATION	
LOT AREA	44,309 SF, 1.017 ACRE
BUILDING SQUARE FOOTAGE	1 STORY 11,200 SF
ZONING EXISTING USE	COMMERCIAL, SH205 OVERLAY
BUILDING HEIGHT / 1 STORY	30'-0" @ TOWER, 28'-0" @ PARAPET
BUILDING USE/TYPE	MULTI TENANT - DOCTORS OFFICE
LOT COVERAGE	25.27%
IMPERVIOUS SURFACE	10,373 SQ. FT. (DRIVE & PARKING)
FLAT WORK AT BLDG	3,623 SQ. FT.
PARKING REQUIRED:	1,200 SF DEVELOPED SPACE
TOTAL SPACES	11,200 SF / 200 = 56
HANDICAP REQUIRED	3 SPACES
PARKING PROVIDED:	65 SPACES (44 BY SHARED AGREEMENT)
STANDARD SPACES	4 SPACES
HANDICAP ACCESSIBLE	69 SPACES
TOTAL	69 SPACES
LANDSCAPE REQUIRED:	6,646 SQ. FT. (15% TOTAL LOT AREA)
LANDSCAPE PROVIDED:	19,493 SQ. FT.

PROJECT INFORMATION	
PROJECT:	HURST DEVELOPMENT LOT 8, ROCKWALL BUSINESS PARK - EAST SUBDIVISION
OWNER:	EPH, LLC 6435 S. FM 549 HEATH, TX 75032
LOCATION:	2380 S. Goliad ROCKWALL, TEXAS 75032
ARCHITECT:	MATTHEW KING PH: 469-742-0678
DATE:	OCTOBER 19, 2012 CITY SITE PLAN ISSUE NOVEMBER 7, 2012 CITY COMMENTS NOVEMBER 20, 2013 Amended site plan submittal DECEMBER 9, 2013 City comments JANUARY 7, 2014 MOVED DUMPSTER JANUARY 22, 2014 City comments FEBRUARY 14, 2014 City comments December 11, 2014 revised sidewalk width