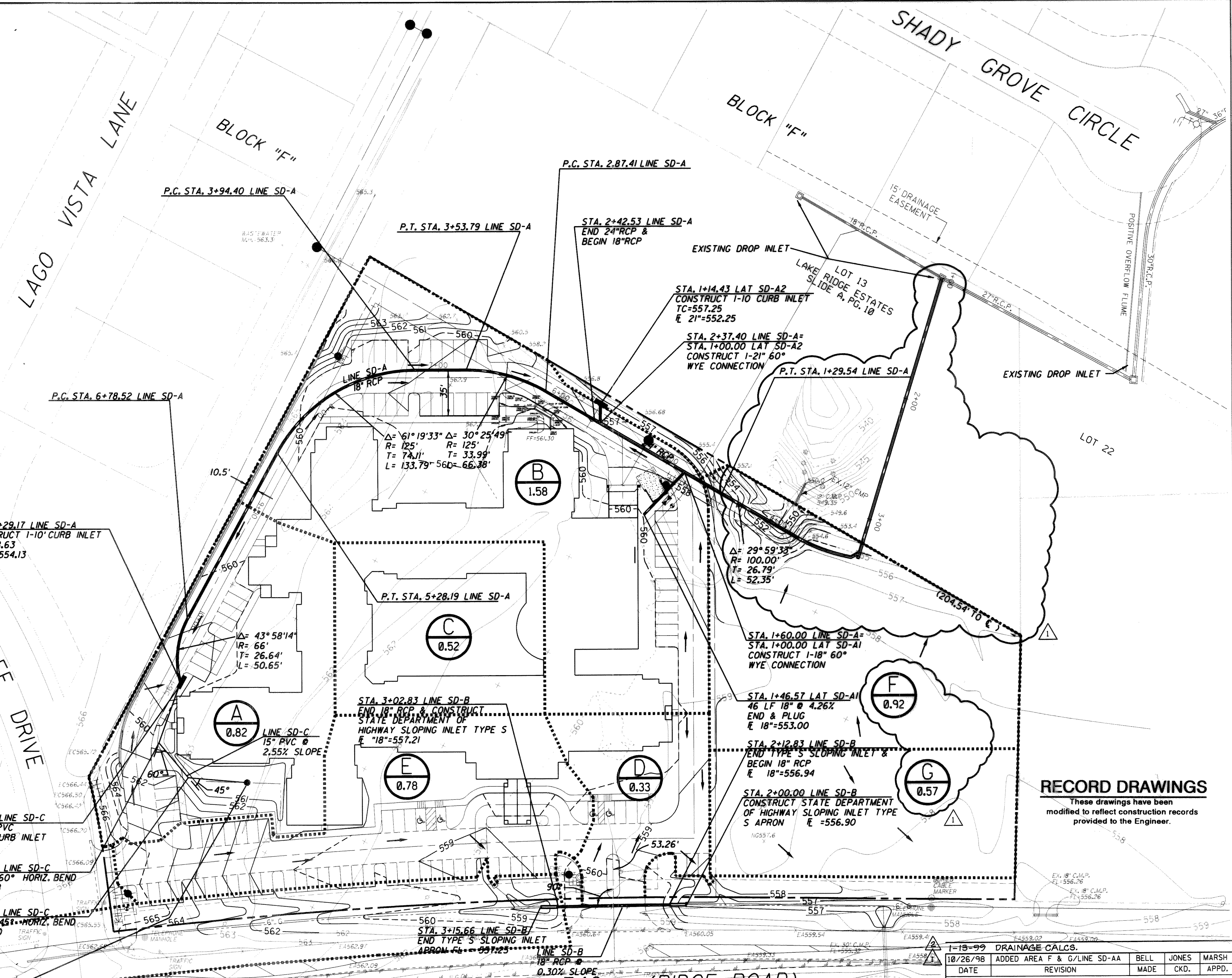


PROPERTY LINE SD-CURVE DATA	
CURVE #1	$\Delta = 07^\circ 41'57''$ $R = 3859.8'$ $L = 518.66'$ CHORD = $S12^\circ 00'30''W$ $518.27'$
CURVE #2	$\Delta = 06^\circ 42'58''$ $R = 555.78'$ $L = 65.15'$ CHORD = $N85^\circ 36'04''W$ $65.11'$



LEGEND

- TCXX.XX TOP OF CURB & GUTTER
- GXX.XX GUTTER ELEVATION
- SWXX.XX SIDEWALK ELEVATION
- SXX.X SPOT ELEVATION
- X SPOT ELEVATION LOCATION
- 560--- PROPOSED 5' CONTOUR
- 561--- PROPOSED 1' CONTOUR
- >--- FLOW ARROW DIRECTION
- |--- CENTER LINE OF DITCH & SWALE
- TC559.41--- EXISTING TOP OF CURB
- 561--- EXISTING CONTOURS

BENCHMARKS

- ☐ CUT "740 A" PCCR TOP OF CURB SUMMER LEE AND RIDGE DRIVE ELEVATION = 565.68
- ☐ CUT IN INLET "740 B" EAST SIDE OF RIDGE ROAD AND FOX CHASE ENTRANCE. ELEVATION = 540.86

STA 2+29.29 LINE SD-C
END 15" PVC & INSTALL
1-12" x 12" ATRIUM GRATE
FOR PARTS NEEDED SEE NDS, INC.
@ (800) 726-1994 OR EQUAL
(NDS 1290 BLACK)
TOP/GRATE ELEV.=560.00
E 15"=557.50

UPSTREAM STATION	DOWNSTREAM STATION	DISTANCE BETWEEN COLLECTION POINTS	INCREMENTAL DRAINAGE AREA	ACCU-MLATED	Time at UP-STREAM Station (min.)	DESIGN STORM FREQUENCY (years)	INTENSITY (in./hr.)	STORM WATER RUNOFF (c. f. s.)	SLOPE OF HYDRAULIC GRADE (ft./ft.)	SELECTED STORM SEWER DIAMETER (inches)	VELOCITY IN SEWER BETWEEN POINTS (f.p.s.)	COEFFICIENT OF HEAD LOSS AT MANHOLES & JUNCTIONS (Kj)	VELOCITY HEAD LOSS AT UPSTREAM STATION (feet)	FLOW TIME IN SEWER (min.)	TIME AT DOWNSTREAM STATION (min.)	HYDRAULIC GRADIENT ELEVATIONS	
																UPSTREAM	DOWNSTREAM
LINE SD-A																	
729.17	242.53	486.64	A	0.82	0.66	100	9.8	6.4	0.0037	18	3.6	1.25	0.21	2.2	12.2	555.62	553.79
242.53	237.40	5.13	B	0.80	0.66	100	9.8	6.4	0.0008	24	2.0	0.75	-0.09	0.0	12.2	553.84	553.93
237.40	160.00	77.40	B	1.58	1.26	100	9.8	18.8	0.0069	24	6.0	0.75	0.51	0.2	12.4	553.33	552.79
160.00	10.96	149.04	C	0.52	0.42	100	9.8	22.9	0.0102	24	7.3	0.35	0.63	0.3	12.8	550.69	549.17
10.96	3.13	7.83	C	0.80	0.42	100	9.8	22.9	0.0102	24	7.3	0.42	0.48	0.0	12.8	548.69	548.61
LINE SD-B																	
332.42	327.41	105.01	F	0.92	0.74	100	9.8	7.2	0.0010	24	2.3	1.25	0.08	0.8	10.8	529.28	529.17
327.41	100.00	227.41	SD-A	2.92	3.07	100	9.8	30.1	0.0177	24	9.6	0.35	1.40	0.4	11.2	527.78	523.75

RECORD DRAWINGS
These drawings have been modified to reflect construction records provided to the Engineer.

1-18-99 DRAINAGE CALCS.				
DATE	ADDED AREA	F & G/LINE SD-AA	BELL JONES MARSH	MADE CKD. APPD.
10/26/98				

Carter Burgess
Carter & Burgess, Inc. 7950 Elmbrook Drive Dallas, Texas 75247-4961
(214) 638-0145 Metro 263-2019 Fax (214) 638-0447

DRAINAGE PLAN & AREA MAP

ROCKWALL ASSISTED LIVING ADDITION CONSTRUCTION PLANS

CITY OF ROCKWALL, ROCKWALL COUNTY, TX

DESIGN	DRAWN	CHECKED	SCALE	DATE	FILE	NO.
JONES	WADE	MARSH	1" = 40'	JUNE 98	01-310	C3