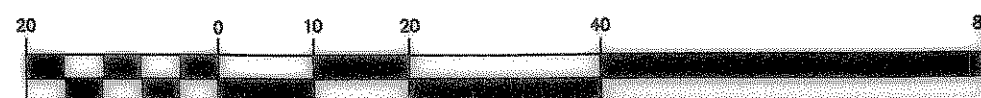
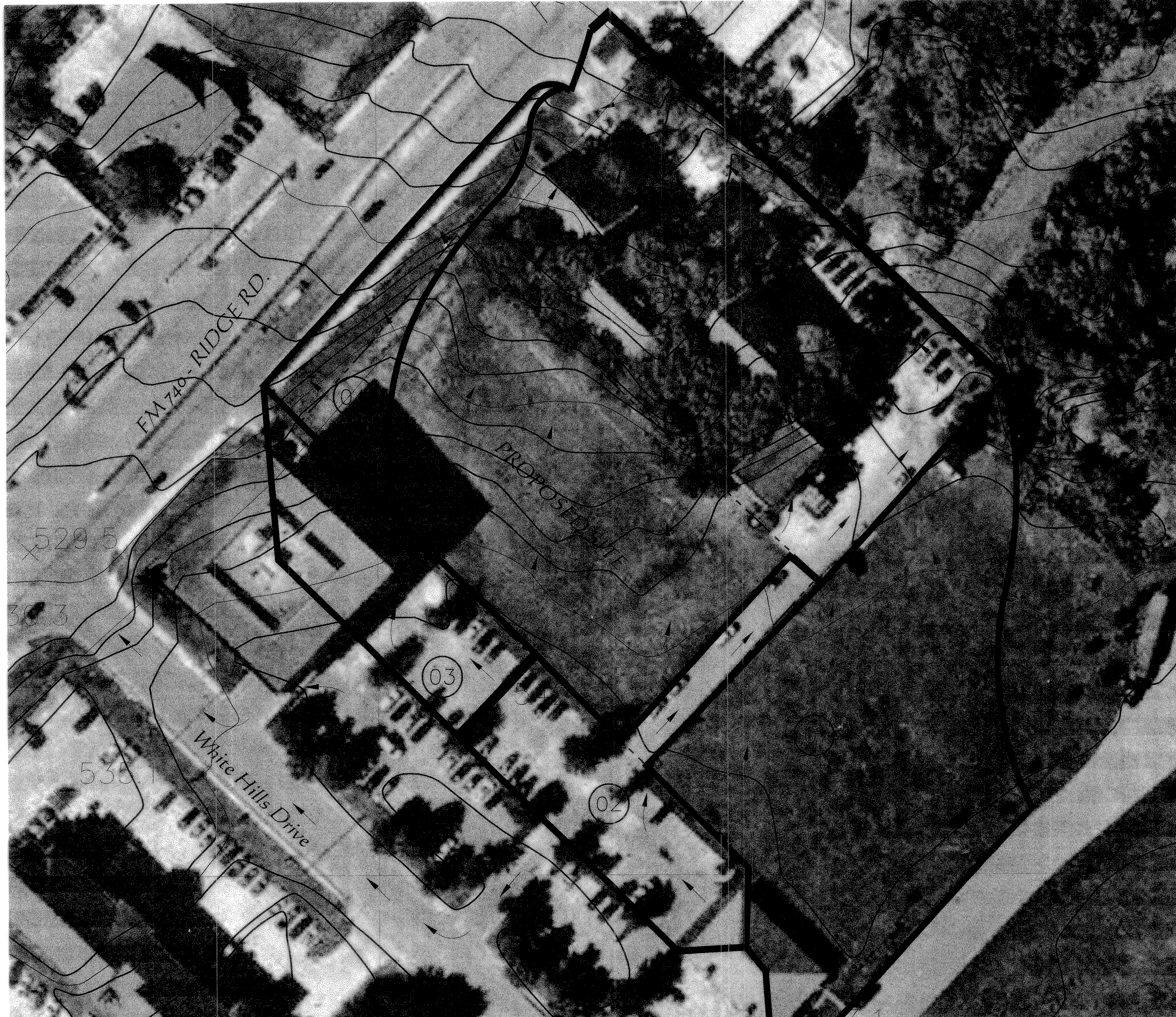


GRAPHIC SCALE



(IN FEET)
1 inch = N.T.Sft.

CAUTION !!!
EXISTING UTILITIES AND UNDERGROUND FACILITIES INDICATED ON THESE PLANS HAVE BEEN LOCATED FROM REFERENCE INFORMATION. IT SHALL BE THE RESPONSIBILITY OF THE CONTRACTOR TO VERIFY BOTH HORIZONTALLY AND VERTICALLY THE LOCATION OF ALL EXISTING UTILITIES AND UNDERGROUND FACILITIES PRIOR TO CONSTRUCTION, TO TAKE NECESSARY PRECAUTIONS IN ORDER TO PROTECT ALL FACILITIES ENCOUNTERED. THE CONTRACTOR SHALL PRESERVE AND PROTECT ALL EXISTING UTILITIES FROM DAMAGE DURING CONSTRUCTION.



PROP. DRAINAGE AREA CALCULATIONS

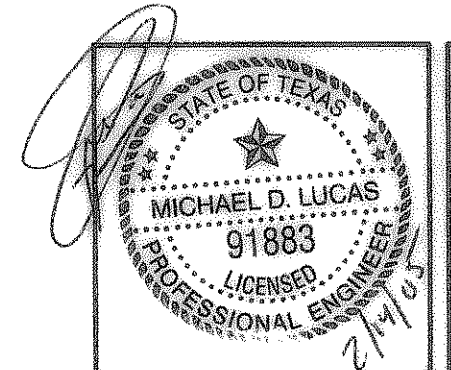
Area ID	Acres	INTENSITY _{Dev.}	C _{Dev.}	Q _{100 Dev.}
01	1.17	9.8	.9	10.34
02	0.43	9.8	.9	3.78
03	0.33	9.8	.9	2.94
04	0.27	9.8	.9	2.36
05	2.24	9.8	.9	19.80

01 = 51,055.89 SQ. FT.
02 = 18,686.42 SQ. FT.
03 = 14,539.24 SQ. FT.
04 = 11,631.49 SQ. FT.
05 = 97,777.46 SQ. FT.

RECORD DRAWING:
[Signature] 6/8/06
AQUA TERRA ENGINEERING CONSULTANTS, LLC DATE

- LEGEND**
- PROP. DRAINAGE AREA ID
 - PROP. RUNOFF Q. CFS
 - FLOW DIRECTION
 - PROP. STORM SEWER w/ INLET
 - EXIST. CONTOURS
 - DRAINAGE DIVIDE

BENCHMARK
OFFSITE BENCHMARK = TOP OF CITY OF ROCKWALL CONCRETE MONUMENT WITH ALUMINUM DISK STAMPED ROOF LOCATED AT THE INTERSECTION OF THE RAILROAD TRACK WITH VILLAGE DRIVE ON THE WEST SIDE OF THE PAVEMENT OF STREET AND NORTH SIDE OF RAILROAD TRACKS. ELEV = 508.51 NAVD 88
ONSITE BENCHMARK = "X" FOUND IN CONCRETE IN EDGE OF DRIVEWAY AT THE EAST CORNER OF LOT 3 AND THE SOUTH CORNER OF LOT 2 OF LAKEWOOD PARK ADDITION. ELEV = 542.48



revisions	date

Lucas Consulting Services
1932 Gullwing Drive Rockwall, Texas 75087
ph: 972-722-8314 fax: 972-722-8314
email: lucasconsulting@charter.net

RIDGEMARK OFF SITE DRAINAGE AREA MAP ROCKWALL, TEXAS

design	drown	scale	date	notes
LCS	LCS	N.T.S.	OCT. 2004	

sheet no.	5
job number	LCS017-01-04