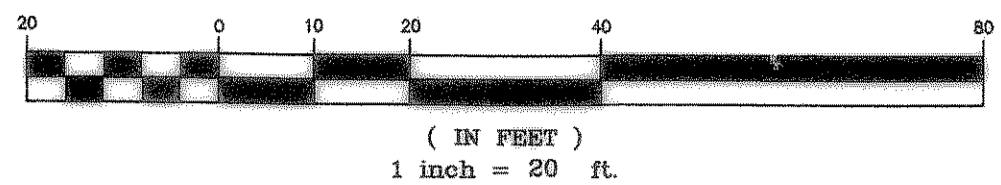
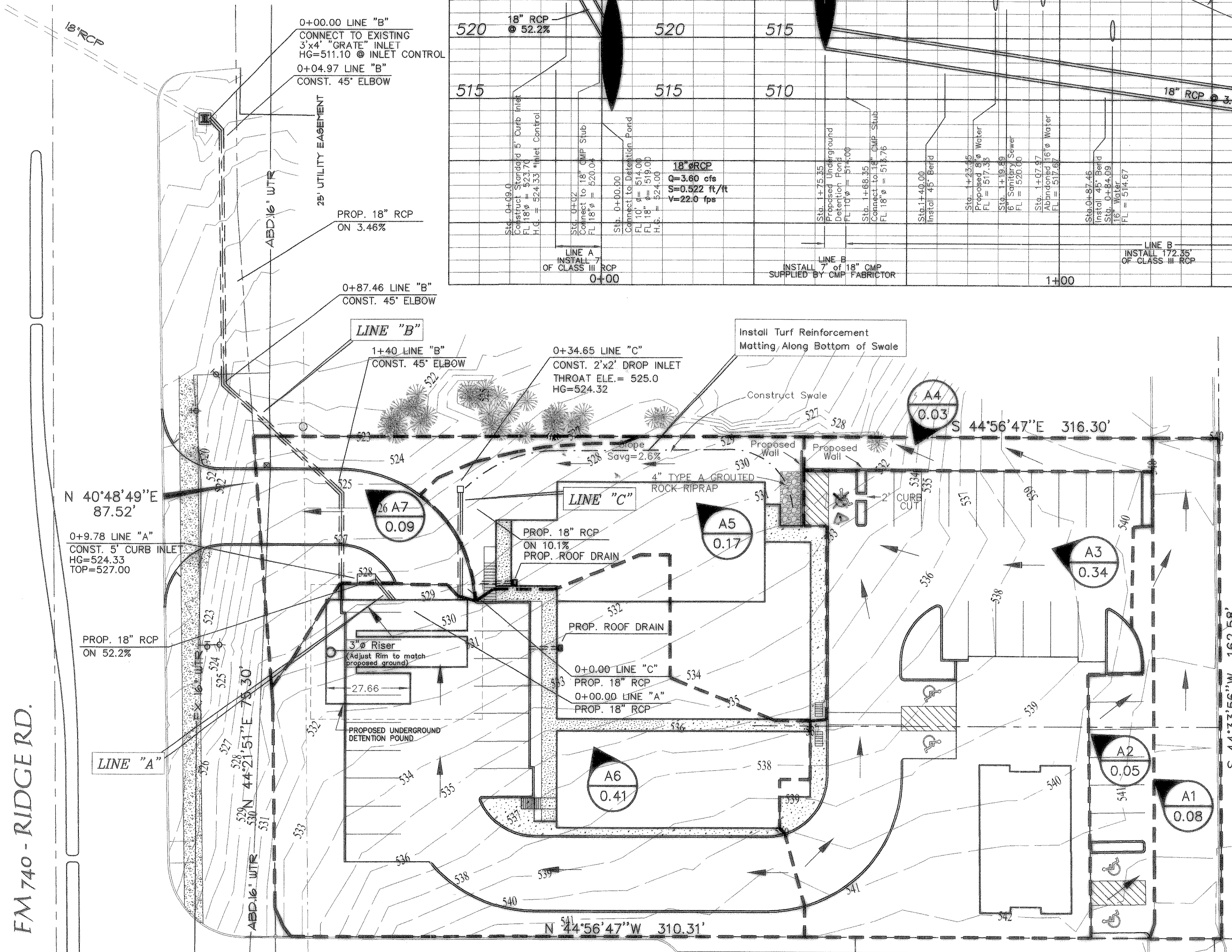
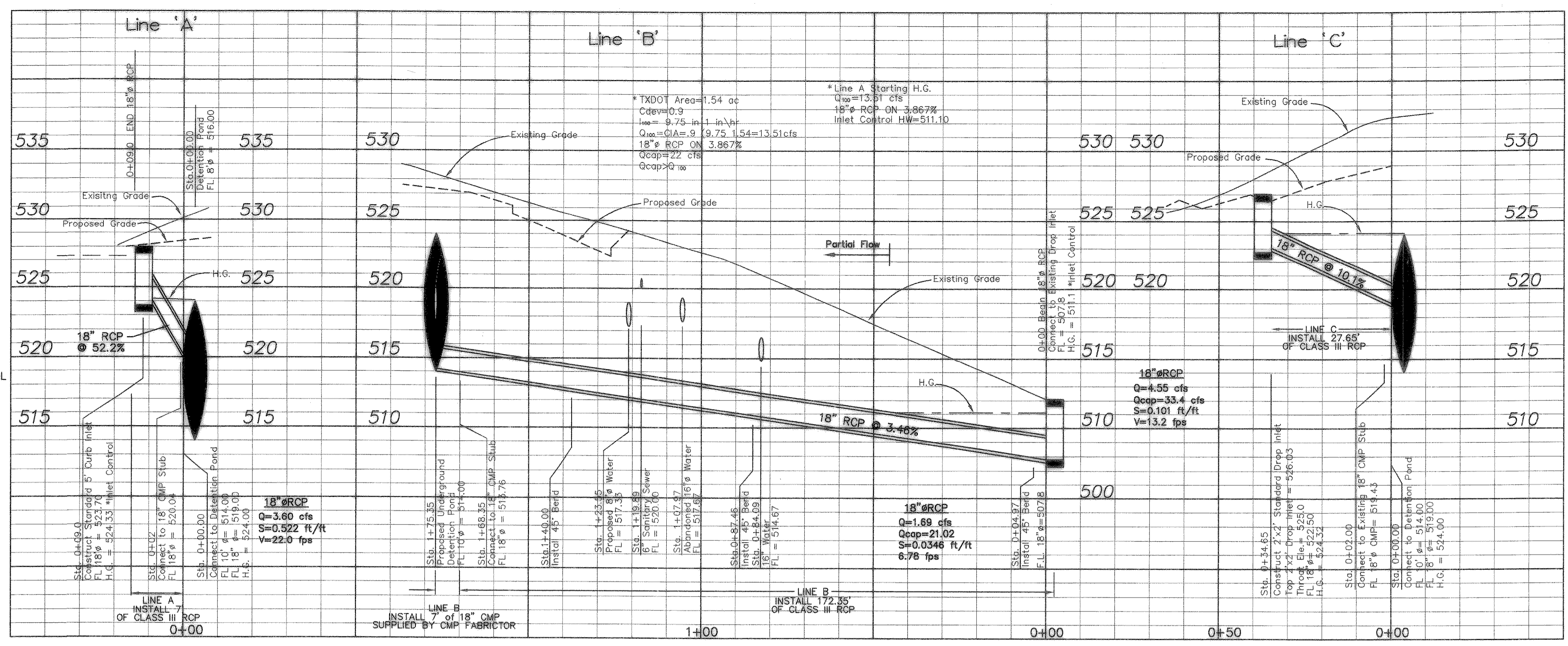


GRAPHIC SCALE



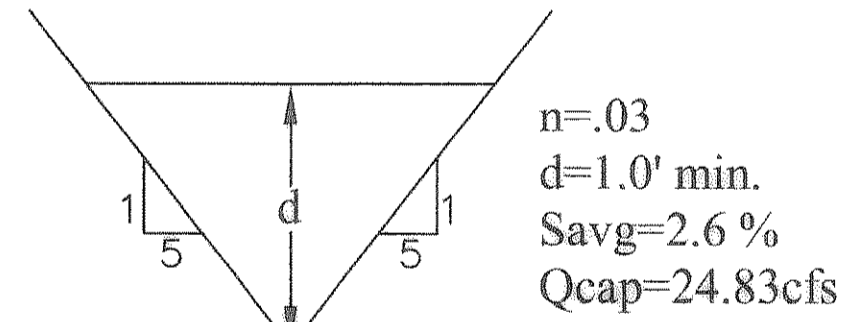
CAUTION !!!
 EXISTING UTILITIES AND UNDERGROUND FACILITIES INDICATED ON THESE PLANS HAVE BEEN LOCATED FROM REFERENCE INFORMATION. IT SHALL BE THE RESPONSIBILITY OF THE CONTRACTOR TO VERIFY BOTH HORIZONTALLY AND VERTICALLY THE LOCATION OF ALL EXISTING UTILITIES AND UNDERGROUND FACILITIES PRIOR TO CONSTRUCTION, TO TAKE NECESSARY PRECAUTIONS IN ORDER TO PROTECT ALL FACILITIES ENCOUNTERED. THE CONTRACTOR SHALL PRESERVE AND PROTECT ALL EXISTING UTILITIES FROM DAMAGE DURING CONSTRUCTION.



PROP. DRAINAGE AREA CALCULATIONS

Area ID	Acres	INTENSITY	Dev.	C _{Dev.}	Q _{100 Dev.}	INLET
A1	0.08	9.8	.9	.72		OFFSITE
A2	0.05	9.8	.9	.43		OFFSITE
A3	0.34	9.8	.9	3.03		SWALE
A4	0.03	9.8	.9	.25		OFF SITE
A5	0.17	9.8	.9	1.47		DROP INLET & SWALE
A6	0.41	9.8	.9	3.60		CURB INLET
A7	0.09	9.8	.9	0.76		OFFSITE

A1 = 3,571 SQ. FT.
 A2 = 2,100 SQ. FT.
 A3 = 14,972 SQ. FT.
 A4 = 1,250 SQ. FT.
 A5 = 7,284 SQ. FT.
 A6 = 17,794 SQ. FT.
 A7 = 3,744 SQ. FT.



Ditch Section (TYP)
 N.T.S.

RECORD DRAWING:

[Signature]
 AQUA TERRA ENGINEERING CONSULTANTS, LLC DATE

DRAINAGE NOTES:

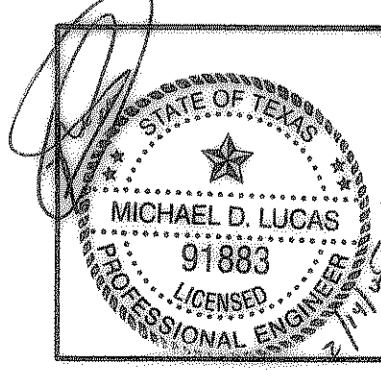
- Turf Reinforcement matting shall be Cortech TRM C450 or approved equal. Contact Gary Young @ (972)679-2230.
- Turf Reinforcement Matting shall be installed & seeded per manufacturer's recommendations.
- Roof Drains are only as shown. No other Roof Drains are proposed.

LEGEND

- PROP. DRAINAGE AREA ID
- PROP. RUNOFF Q. CFS
- FLOW DIRECTION
- PROP. STORM SEWER w/ INLET
- EXIST. CONTOURS
- DRAINAGE DIVIDE

BENCHMARK
 OFFSITE BENCHMARK = TOP OF CITY OF ROCKWALL CONCRETE MONUMENT WITH ALUMINUM DISK STAMPED ROSS LOCATED AT THE INTERSECTION OF THE RAILROAD TRACK WITH VILLAGE DRIVE ON THE WEST SIDE OF THE PAVEMENT OF STREET AND NORTH SIDE OF RAILROAD TRACKS. ELEV = 506.51 NAVD 83
 ONSITE BENCHMARK = "X" FOUND IN CONCRETE IN EDGE OF DRIVEWAY AT THE EAST CORNER OF LOT 3 AND THE SOUTH CORNER OF LOT 2 OF LAKEWOOD PARK ADDITION. ELEV = 542.48

DETENTION POND
 (REFER TO SHIT. 7 FOR CALCULATIONS)
 SLOPE DETENTION POND BOTTOM
 TO DRAIN TO OUTER PIPE



revisions	date
<i>[Signature]</i>	<i>[Date]</i>

Lucas Consulting Services

1932 Gullwing Drive Rockwall, Texas 75087
 ph: 972-722-8314 fax: 972-722-8314
 email: lucasconsulting@charter.net

RIDGEMARK DRAINAGE PLAN ROCKWALL, TEXAS					sheet no.
design	drawn	scale	date	notes	job number
LCS	LCS	1"=20'	OCT. 2004		LCS017-01-04