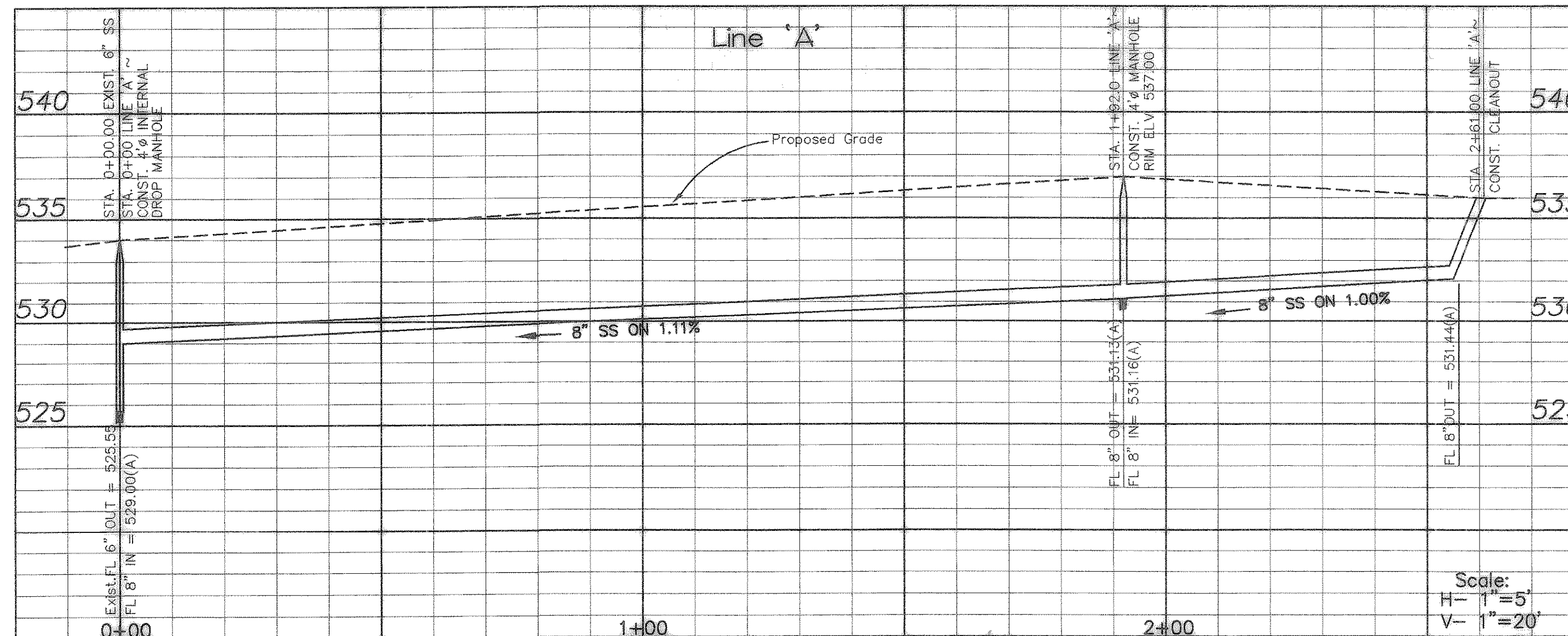


NOTES:

1. ALL DIMENSIONS ARE TO FACE OF CURB UNLESS NOTED OTHERWISE
2. ALL RADII ALONG FIRE LANE ARE MIN. 20.0' @ BACK OF CURB
3. ALL SURFACE PARKING SPACES ARE 9.0' WIDE x 20.0' DEEP OR 18.0' DEEP w/A 2' OVERHANG. NO SHRUBS SHALL BE CONTAINED IN THIS 2' OVERHANG AREA. SHRUBS SHALL BE PLACED 4' FROM THE FACE OF CURB WHERE ADJACENT TO 18' PARKING SPACES.
4. REFER TO LANDSCAPE PLANS FOR ALL SIDEWALK, SCREENING, OPEN SPACE CALCULATIONS, AND MONUMENT SIGN LOCATIONS.
5. REFER TO SITE LIGHTING PLANS FOR LIGHTING LOCATIONS, SPECIFICATIONS, AND PHOTOMETRIC DETAILS.
6. REFER TO BUILDING ELEVATION PLANS FOR ALL BUILDING SIGNAGE LOCATIONS AND DETAILS.
7. A 10'x10' OR 5'x10' WATER ESMT. TO BE PROVIDED AROUND EACH FIRE HYDRANT.
8. ALL FIRE LANES SHALL BE CONSTRUCTED MARK PER CITY OF ROCKWALL SPECIFICATIONS.
9. CONTRACTOR ADJUSTMENTS TO SPOT GRADES TO MAINTAIN POSITIVE DRAINAGE IS ALLOWED, WITH PRIOR APPROVAL OF THE ENGINEER. CONTRACTOR SHALL CONTACT THE ENGINEER PRIOR TO PAVING IF AREAS OF POOR DRAINAGE ARE ENCOUNTERED.

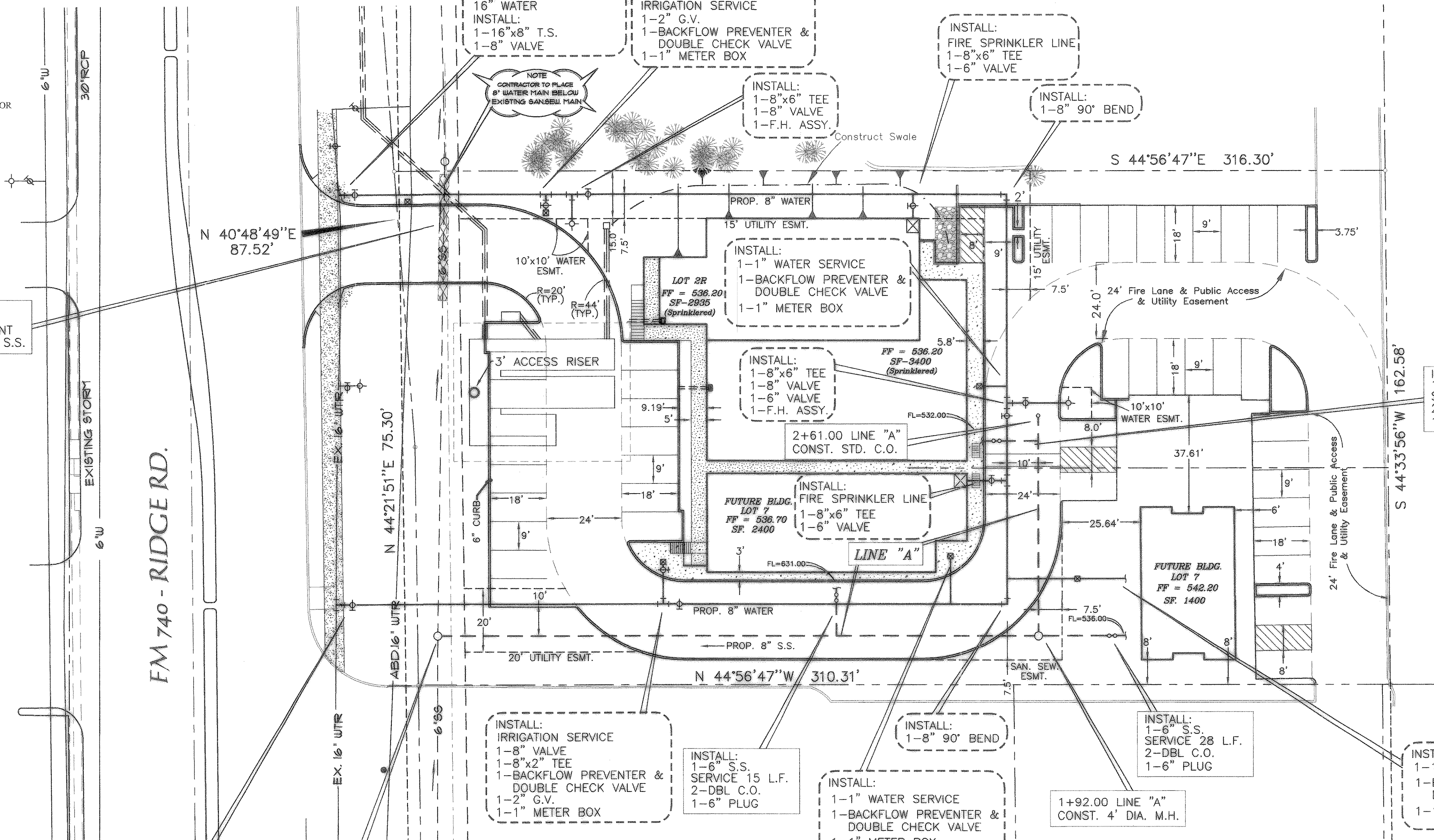


CAUTION !!!
 EXISTING UTILITIES AND UNDERGROUND FACILITIES INDICATED ON THESE PLANS HAVE BEEN LOCATED FROM REFERENCE INFORMATION. IT SHALL BE THE RESPONSIBILITY OF THE CONTRACTOR TO VERIFY BOTH HORIZONTALLY AND VERTICALLY THE LOCATION OF ALL EXISTING UTILITIES AND UNDERGROUND FACILITIES PRIOR TO CONSTRUCTION, TO TAKE NECESSARY PRECAUTIONS IN ORDER TO PROTECT ALL FACILITIES ENCOUNTERED. THE CONTRACTOR SHALL PRESERVE AND PROTECT ALL EXISTING UTILITIES FROM DAMAGE DURING CONSTRUCTION.

GENERAL NOTES:

- 1.) LOCATIONS OF UTILITIES SHOWN HEREIN WERE DERIVED FROM BEST AVAILABLE SOURCES AND FIELD SURVEYS; ENGINEERS DO NOT WARRANT THE EXISTENCE OR NON-EXISTENCE OF UTILITIES. THE CONTRACTOR SHALL BE RESPONSIBLE FOR DETERMINING THE EXACT LOCATION, DEPTHS AND SIZE OF ALL UNDERGROUND UTILITIES AND STRUCTURES PRIOR TO CONSTRUCTION AND SHALL BE LIABLE FOR ANY DAMAGES OR DOWN-TIME CAUSED BY FAILURE TO COMPLY WITH THESE INSTRUCTIONS.
- 2.) CONTRACTOR SHALL REFERENCE MECHANICAL, PLUMBING AND IRRIGATION PLANS IN THIS SET FOR COORDINATION OF OTHER EXISTING AND PROPOSED UTILITIES TO BE INSTALLED AS PART OF THIS PROJECT.
- 3.) SANITARY SEWER P.V.C. SHALL BE SDR 35.
- 4.) ALL WATER MAIN P.V.C. SHALL BE CLASS 200 (PRESSURE PIPE).
- 5.) MINIMUM COVER FOR WATER MAIN SHALL BE 48 INCHES.
- 6.) FITTINGS FOR P.V.C. WATER PIPE SHALL BE MEGA LUG FLANGE OR APPROVED EQUAL AND SHALL BE CLASS 200 IN ACCORDANCE WITH AWWA C110-77 (ANSI A21.10).
- 7.) WATER SERVICES = 1"; SEWER SERVICES = 6"
- 8.) TESTING FOR WATER & SEWER LINE SHALL BE PROVIDED BY THE CONTRACTOR AND REQUIRED BY THE CITY OF ROCKWALL AND INCLUDED IN THE BID PRICE.
- 9.) ALL WATER & SEWER SERVICE INSTALLATIONS INCLUDING EMBEDMENT SHALL BE PER CITY OF ROCKWALL & NCTCOG CODE STANDARDS.
- 10.) BLUE EMS DISKS SHALL BE INSTALLED FOR WATER LINES AT EVERY CHANGE IN DIRECTION, VALVE, AND SERVICE.
- 11.) GREEN EMS DISKS SHALL BE INSTALLED FOR SANITARY SEWER AT EVERY MANHOLE, CLEAN OUTS, AND SERVICES.
- 12.) 5' CLEARANCE AROUND ALL FIRE HYDRANTS.
- 13.) CONTRACTOR SHALL PROVIDE A TRENCH SAFETY PLAN PREPARED BY A REGISTERED ENGINEER.
- 14.) ALL BUILDING SERVICE LINES SHALL TERMINATE 5' FROM BUILDING LOCATIONS
- 15.) ALL BUILDING LOCATING DIMENSIONS SHOWN ARE FOR PREFERENCE ONLY. ALL ACTUAL BUILDING LOCATIONS SHALL BE LOCATED BY COORDINATES SUPPLIED BY ENGINEER.

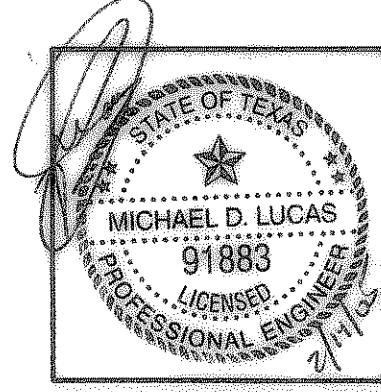
INSTALL:
 45 L.F. OF
 CONCRETE ENCASUREMENT
 AROUND EXISTING 6" S.S.



INSTALL:
 1-6" S.S.
 SERVICE 18 L.F.
 2-DBL C.O.
 1-6" PLUG

RECORD DRAWING:
 AQUATERRA ENGINEERING CONSULTANTS, LLC
 DATE: 6/1/06

BENCHMARK
 OFFSITE BENCHMARK = TOP OF CITY OF ROCKWALL CONCRETE MONUMENT WITH ALUMINUM DISK STAMPED ROUGE LOCATED AT THE INTERSECTION OF THE RAILROAD TRACK WITH VILLAGE DRIVE ON THE WEST SIDE OF THE PAVEMENT OF STREET AND NORTH SIDE OF RAILROAD TRACKS. ELEV = 508.51 NAVD 88
 ONSITE BENCHMARK = "X" FOUND IN CONCRETE IN EDGE OF DRIVEWAY AT THE EAST CORNER OF LOT 3 AND THE SOUTH CORNER OF LOT 2 OF LAKEWOOD PARK ADDITION. ELEV = 542.48



revisions	date

Lucas Consulting Services
 1932 Gullwing Drive Rockwall, Texas 75087
 ph: 972-722-8314 fax: 972-722-8314
 email: lucasconsulting@charter.net

RIDGEMARK WATER SEWER/DIMENSION CONTROL PLAN ROCKWALL, TEXAS

design	drawn	scale	date	notes
LCS	LCS	1"=20'	OCT. 2004	

sheet no.	3
job number	FLCS017-01-04