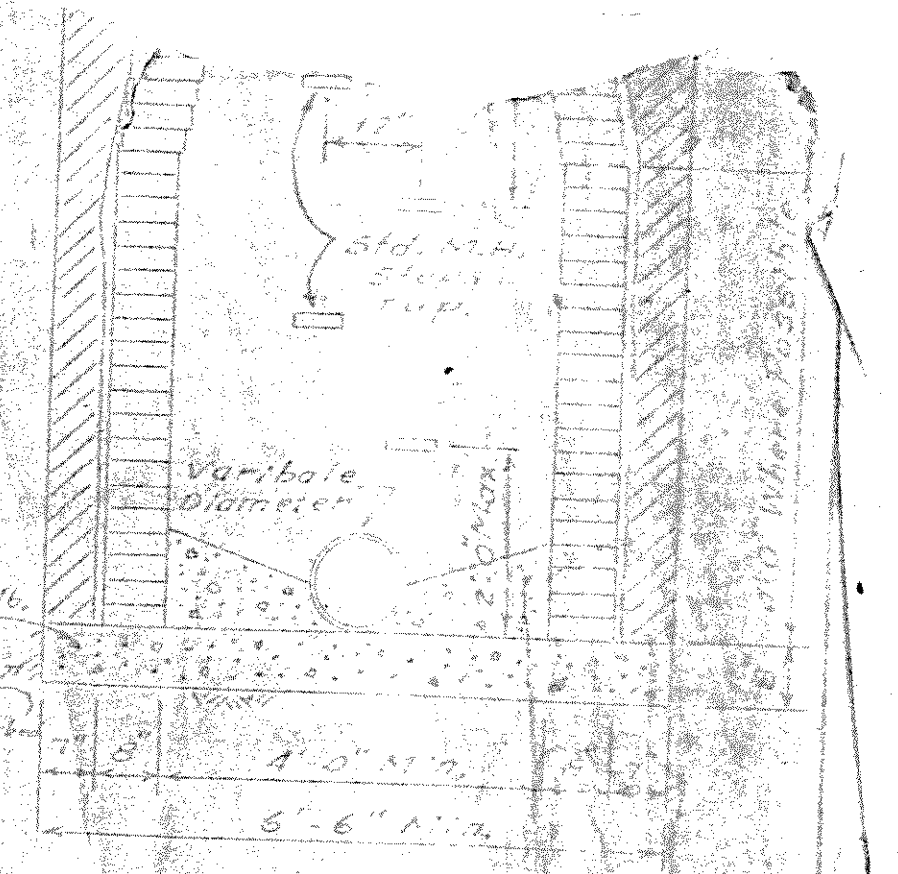


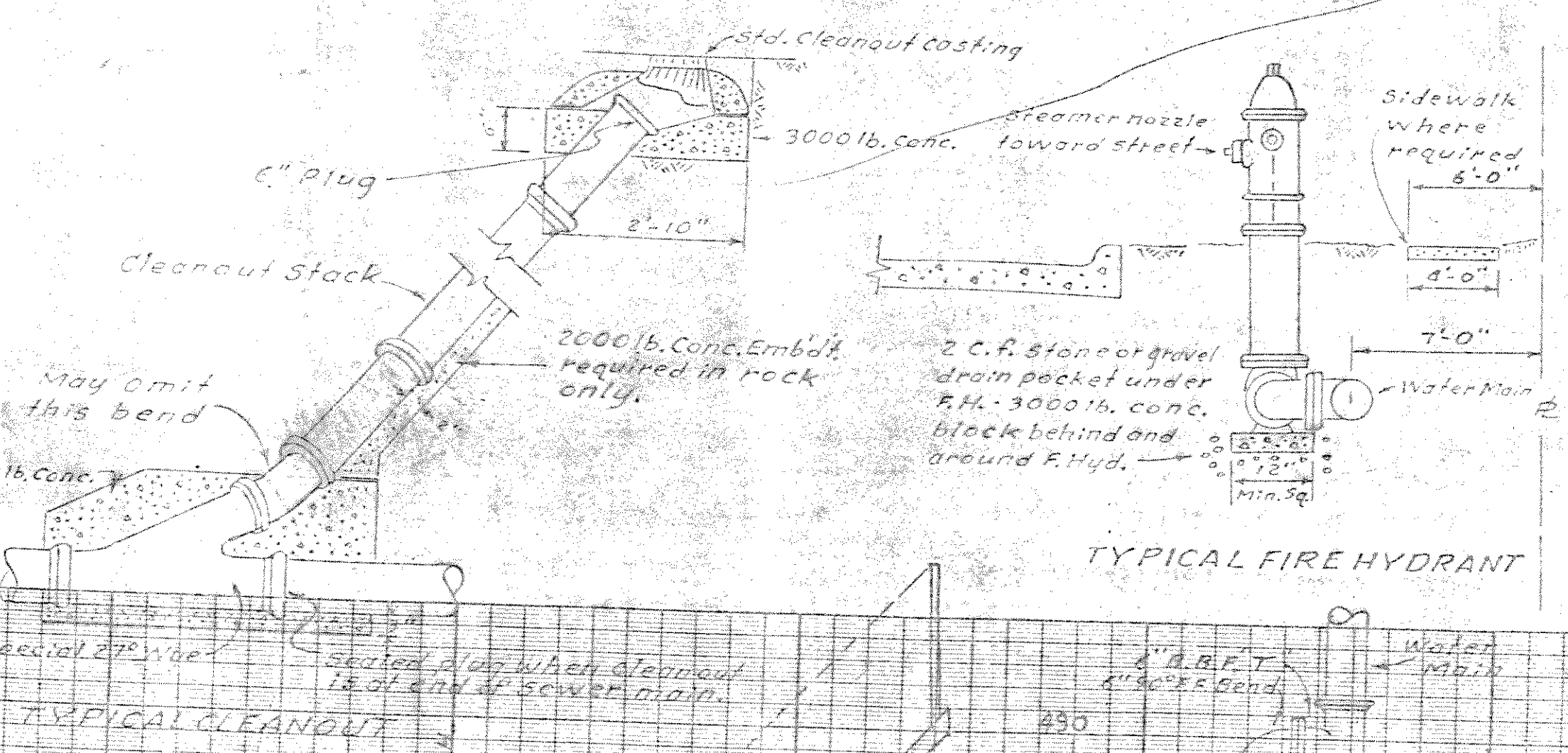
GENERAL NOTES.

1. All water mains in this subdivision shall be bell & spigot type cast iron pipe - A.W.W.A. specification or Federal Specification W.W.-P-42.1b.
2. All sanitary sewer pipe shall be Delta Seal or equal, U.C. Tile Pipe.
3. 4" Sanitary sewer stub-outs shall be placed to serve all lots in the subdivision.
4. 3/4" Type K copper services including corporation and curb cocks shall be placed to serve all lots in the subdivision.
5. All water mains shall have a minimum cover of 42" below approved street grades, or as required to clear other utilities.
6. All water lines shall pass a 4-hour pressure test to be made by the contractor.
7. The contractor will be required to chlorinate all water lines in accordance with State Health Department requirements.
8. Washed pea gravel or crushed rock embayment will be required for all sanitary sewer lines.
9. 4" mechanical joint C.I. pipe - class 150 A.W.W.A. or Federal specification W.W.-P-42.1b will be required from the lift station to gravity flow discharge as shown on the plan.
10. Fire hydrants - breakable type, A.W.W.A. specification C-502-53, 2-2 1/2" I.D. hose nozzle, 1-4" I.D. Ramper nozzle. All hydrants to open by turning to the left, manufacturer to be approved by the City of Rockwall.
11. Valves - A.W.W.A. specification C-500-52-T. All gate valves to be Hub-end, iron body, bronze mounted, double disc, guaranteed 150# working pressure, all to open by turning to the left, and approved by the City of Rockwall.
12. Sewage Lift Station - Contractors submitting bids for furnishing and installing the Sewage Lift Station are required to furnish for consideration the Manufacturers Working Plans and specifications of the unit proposed. The bid price will be for furnishing and installing the unit.
13. All water and sanitary sewer mains will be located back of the street curb, 7 ft. out from the property line, except as shown on this plan.

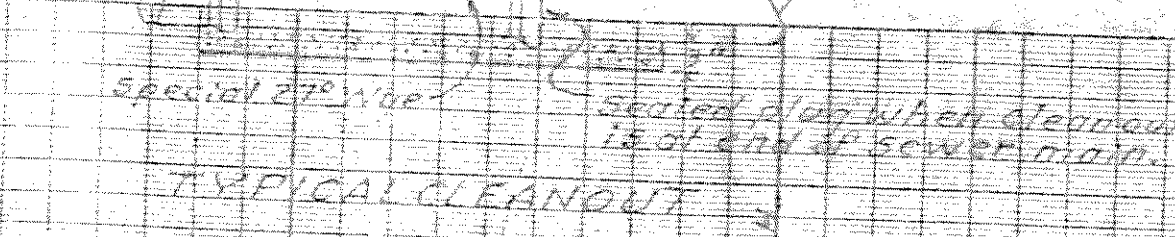


TYPICAL MANHOLE

NOTES FOR ABOVE
All Manholes in this subdivision shall have a 4-foot diameter base and a 3000 lb. concrete cover. The base shall be poured the full width of the excavation. Concrete grade shall be maintained for influent and effluent until 24 hours bearing on soil is maintained.



TYPICAL FIRE HYDRANT



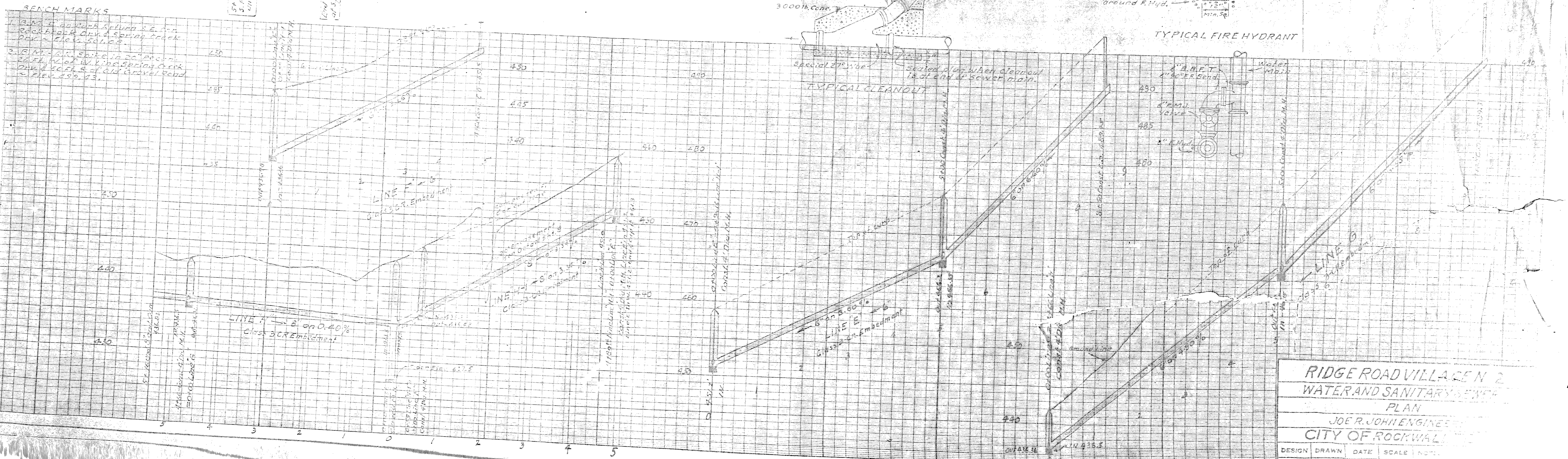
TYPICAL CLEANOUT

BENCH MARKS

1. P.M. 100 Rock Brook Drive S. on Rock Brook Drive & Spring Creek Drive. Elev. 541.82.

2. P.M. 611.10 on Rock Brook Drive. Elev. 541.82.

3. P.M. 611.10 on Rock Brook Drive. Elev. 541.82.



RIDGE ROAD VILLAGE N 2			
WATER AND SANITARY SEWER			
PLAN			
JOE R. JOHN ENGINEER			
CITY OF ROCKWALL			
DESIGN	DRAWN	DATE	SCALE
J.R.J.	J.R.J.	Aug 1984	1" = 40'