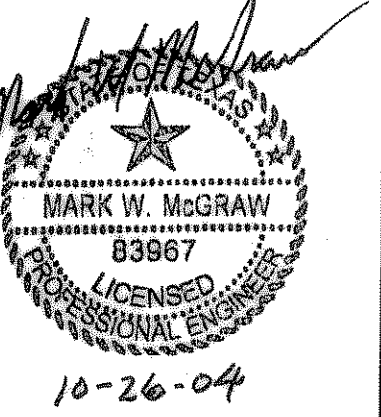




Ridge Road Town Centre  
Partners, L.P.  
by its General Partners:  
RIDGE ROAD  
PARTNERS L.L.C.



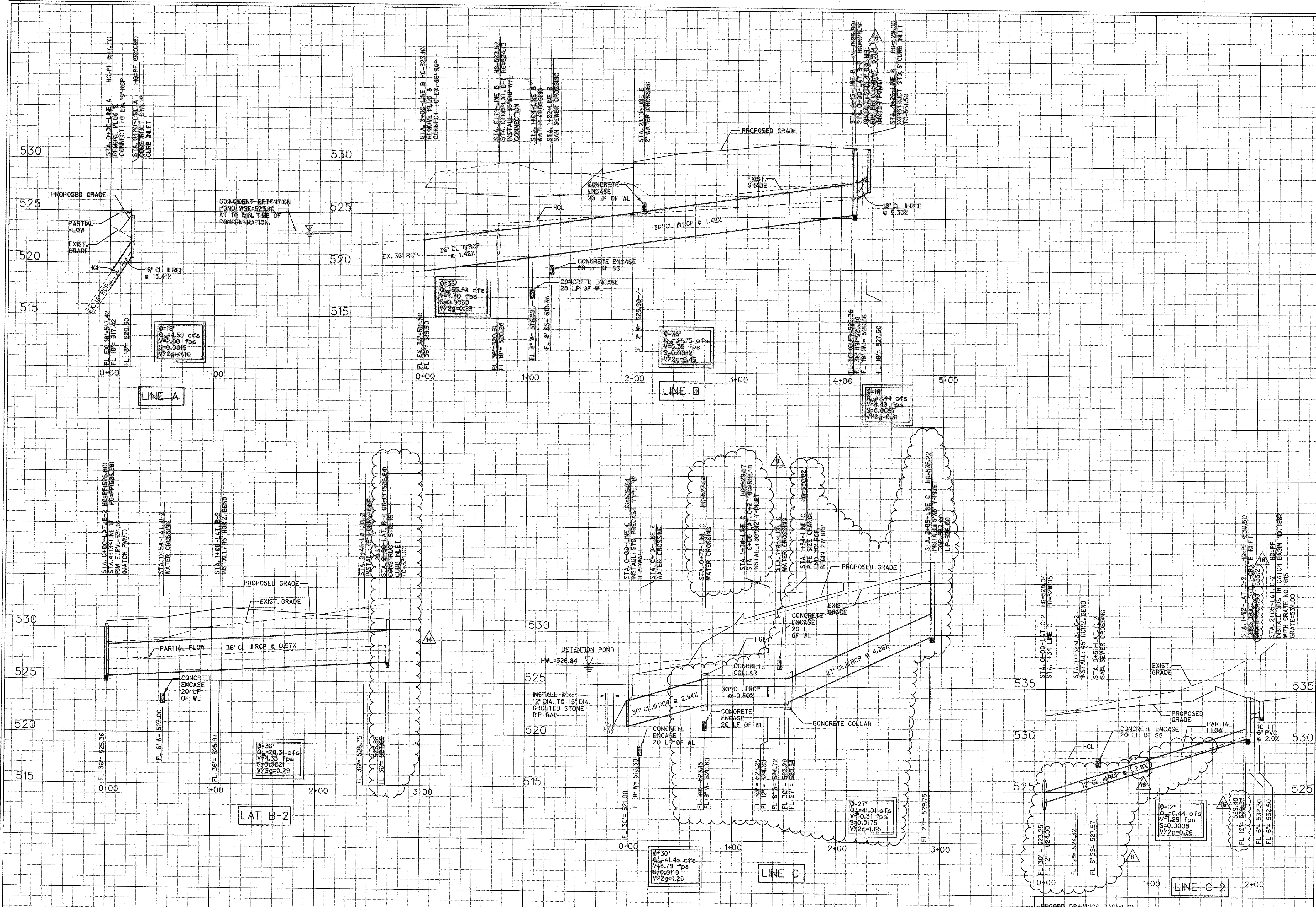
**Half Associates, Inc.**  
ENGINEERS • ARCHITECTS • SCIENTISTS • PLANNERS • SURVEYORS  
806 NORTHWEST PLAZA DRIVE  
DALLAS, TEXAS 75225  
TEL (214) 346-0200  
FAX (214) 739-0095

Project No: AVO # 20817  
Issued: \_\_\_\_\_

No.	Date	Description
1	11/04/02	FIRST SUBMITTAL
2	4/06/03	SECOND SUBMITTAL
3	5/09/03	THIRD SUBMITTAL
4	4/06/03	FOURTH SUBMITTAL
5	3/02/04	FIFTH SUBMITTAL
7	10/26/04	SEVENTH SUBMITTAL

Drawn by: \_\_\_\_\_  
Checked by: \_\_\_\_\_  
Sheet Title: \_\_\_\_\_

STORM SEWER  
PROFILES  
**C5.2**  
Sheet Number



RECORD DRAWINGS BASED ON  
FIELD SURVEY (12/05) AND  
CONTRACTOR INFORMATION ONLY.  
*Mark W. McGraw 2-8-06*

HORIZ. SCALE: 1"= 40'  
VERT. SCALE: 1"= 4'

- 02-08-06 RECORD DRAWINGS
- 12/05 ELIMINATED 26 PARKING SPACES
- 11/30/04 REVISED STORM CONTRACT