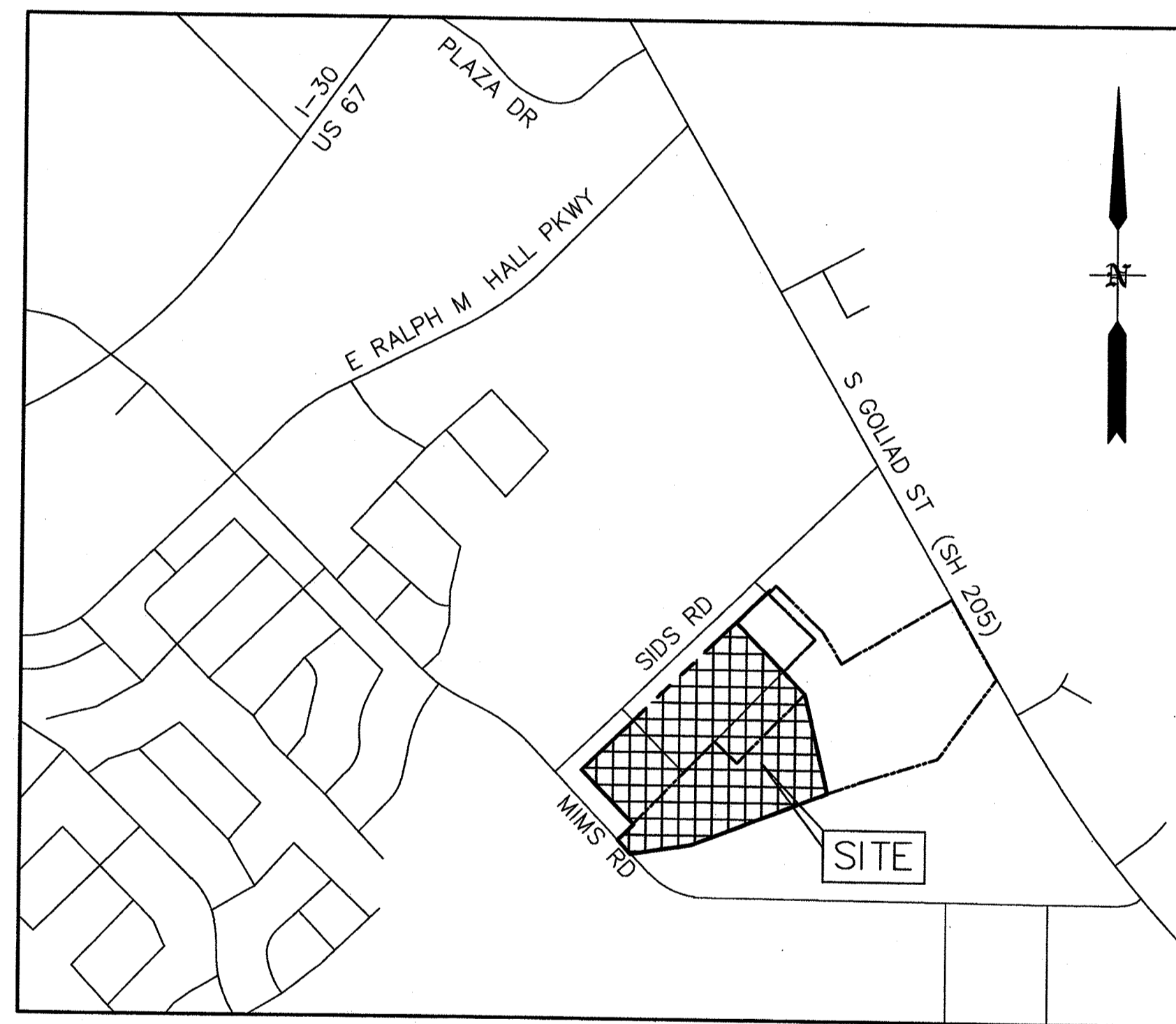


100% - CONSTRUCTION DOCUMENTS
FOR
RCEC OFFICE BUILDING PHASE II
LOTS 4-5 BLOCK A RAYBURN COUNTRY ADDITION 20.45 ACRES
24.96 ACRE TRACT
WILLIAM H. BARNES SURVEY, ABSTRACT NO. 26
AN ADDITION TO THE CITY OF ROCKWALL, ROCKWALL COUNTY,
TEXAS



VICINITY MAP
N.T.S.

Sheet List Table	
Sheet Number	Sheet Title
01	COVER SHEET
02	FINAL PLAT
03	DEMOLITION PLAN
04	SITE PLAN
05	PAVING & DIMENSION CONTROL PLAN
06	GRADING PLAN
07	DRAINAGE AREA MAP
08	EXISTING DRAINAGE AREA MAP
09	STORM SEWER PLAN & PROFILE
10	STORM SEWER PLAN & PROFILE
11	DETENTION POND 1
12	DETENTION POND 2
13	WATER & SANITARY SEWER PLAN
14	SANITARY SEWER PROFILE
15	EROSION CONTROL PLAN
16	GENERAL NOTES & PAVING SECTIONS
17	WATER DETAILS
18	SANITARY SEWER DETAILS
19	STORM SEWER DETAILS
20	EROSION CONTROL DETAILS

RECORD DRAWINGS

To the best of our knowledge Engineering Concepts & Design, L.P., hereby states that this plan is As-Built. This information provided is based on surveying at the site and information provided by the contractor.

Todd Winters 6-13-19
TODD WINTERS DATE

CAUTION! EXISTING UTILITIES

CONTRACTOR SHOULD CALL 1-800-DIG-TESS PRIOR TO BEGINNING ANY CONSTRUCTION ACTIVITIES FOR EXISTING UTILITY LOCATIONS. EXISTING UTILITIES AND UNDERGROUND FACILITIES INDICATED ON THESE PLANS HAVE BEEN LOCATED FROM REFERENCE INFORMATION. IT IS THE RESPONSIBILITY OF THE CONTRACTOR TO VERIFY BOTH HORIZONTALLY AND VERTICALLY THE LOCATION OF ALL EXISTING UTILITIES AND UNDERGROUND FACILITIES PRIOR TO CONSTRUCTION AND TO TAKE NECESSARY PRECAUTIONS IN ORDER TO PROTECT ALL FACILITIES ENCOUNTERED. THE CONTRACTOR SHALL PRESERVE AND PROTECT ALL EXISTING UTILITIES FROM DAMAGE DURING CONSTRUCTION.

OWNER

Rayburn Country Electric
980 Sids Road
Rockwall, TX 75087
Telephone: 469.402.2100



ENGINEERING / PROJECT MANAGEMENT /
CONSTRUCTION SERVICES - FIRM REG. #F-001145
201 WINDCO CIR, STE 200, WYLIE, TX 75098
972-941-8400 FAX: 972-941-8401 WWW.ECDLP.COM

REVISIONS:	
DATE:	APRIL 13, 2018
PROJECT NO.:	3560
DWG FILE NAME:	01-COVER SHEET.DWG

THIS DOCUMENT IS RELEASED FOR THE PURPOSE OF CONSTRUCTION.



FOR CONSTRUCTION
APRIL 13, 2018
ENGINEERINGCONCEPTS & DESIGN, L.P.
RCEC OFFICE BUILDING PHASE II
ROCKWALL COUNTY, TEXAS

4-13-18