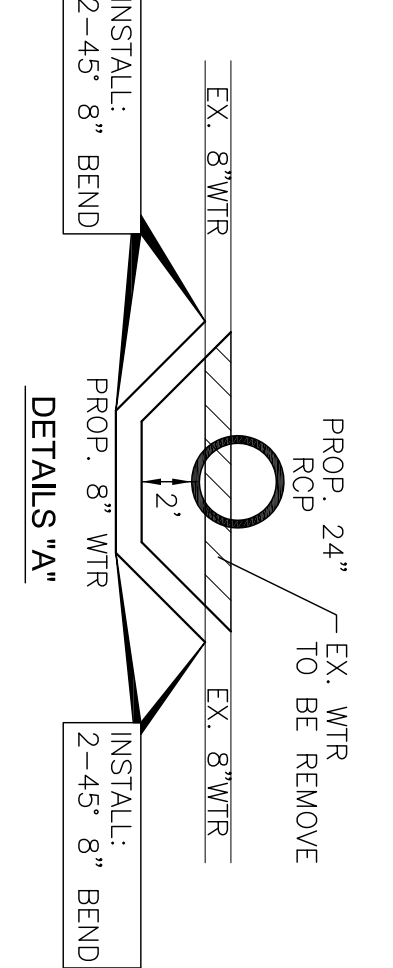


!! CAUTION !!
 EXISTING AND/OR PROPOSED UTILITIES IN AREA. CONTRACTOR SHALL CONTACT THE PROPER UTILITY COMPANIES TO VERIFY THE LOCATION AND DEPTH OF THESE UTILITIES. THESE CONTACTS SHALL INCLUDE, BUT NOT BE LIMITED TO THE FOLLOWING COMPANIES:
 1-800-DIG-TESS
 ONCOR GAS & ELECTRIC 972-569-6311
 S.B.C. 972-569-4755
 COSERV 214-458-7868
 AT&T CABLE 214-320-7404
 AT&T LONG DISTANCE 209-885-6405



INSTALL:
 1-10" TAPPING SLEEVE
 AND VALVE
 1-10" GATE VALVE

INSTALL:
 1-10"x6" TEE
 1-10"x8" TEE
 1-8" GATE VALVE
 1-6" GATE VALVE
 1-STD FH

INSTALL:
 1-10"x6" TEE
 1-10"x8" TEE
 1-8" GATE VALVE
 1-6" GATE VALVE
 1-STD FH

INSTALL:
 1-45" 10" BEND

INSTALL:
 2-4" PVC SCHD 40
 (ELECTRICAL CONDUIT)

INSTALL:
 1-45" 10" BEND

INSTALL:
 1-8" 90° BEND
 1-8" GATE VALVE
 1-10"x8" REDUCER

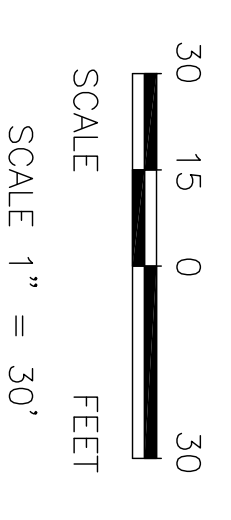
INSTALL:
 1-22" 10" BEND

INSTALL:
 1-8" PLUG
 1-8" GATE VALVE

CUT AND PLUG EX. 8" WTR

CUT AND PLUG EX. 8" WTR

!! CAUTION !!
 ALL UTILITIES MAY NOT BE SHOWN ON THE PLANS. LOCATION OF EXISTING UTILITIES SHOWN ARE APPROXIMATE AND ARE BASED ON INFORMATION FROM PUBLIC RECORDS AND SOME FIELD VERIFICATION. IF YOU SHALL BE THE CONTRACTOR'S RESPONSIBILITY TO VERIFY ALL UTILITIES LOCATIONS AND WHETHER ANY ADDITIONAL UTILITIES EXIST. HE SHALL NOTIFY THE OWNER OF SUCH UTILITIES BEFORE BEGINNING UTILITIES DAMAGED BY THE CONTRACTOR DURING CONSTRUCTION SHALL BE REPAIRED BY THE CONTRACTOR AT THE CONTRACTOR'S EXPENSE.



SITE LEGEND

- EX. FIRE HYDRANT
- PROP. FIRE HYDRANT
- PROP. SS. MH.
- EX. SS. MH.

BENCHMARK
 TOP NORTHEAST CORNER OF CONCRETE WYE INLET LOCATED IN SOUTHWEST CORNER OF HOME DEPOT
 ELEV = 540.69

NOTE:
 1" ALL MANHOLES TO BE RAVEN LINED SEE DETAILS FOR MANHOLE LID
 2" WATER LINE TO BE CLASS 200



AS BUILT
 THIS IS TO CERTIFY THAT CHANGES AND CORRECTIONS HAVE BEEN MADE TO THE ORIGINAL DESIGN AND THE CONTRACTOR'S RECORD OF THIS PROJECT.

UTILITY PLAN (WATER)

**ROCKWALL MARKET CENTER SOUTH
 ROCKWALL, TEXAS**

**GJ DEVELOPMENT, LP.
 PSA ENGINEERING**

1500 E INDUSTRIAL BOULEVARD, MARLIN, TEXAS 75068, (972) 562-5555
 17819 DAVENPORT ROAD, SUITE 218 DALLAS, TX 75232, PH (972) 248-9851, FAX (972) 248-9851
 T.B.P.E. REGISTRATION # F-6974, T.B.P.L.S. FROM REGISTRATION NO. 100453

DESIGN	PSA	DATE	06/22/11	AS SHOWN	CHECK	FILE	NO.
DRAWN	PSA	SCALE			PSS	21009.RMS	C-7.1