



Restaurant Support Office  
5800 Tempyson Parkway, Plano, TX 75024  
Tele: 972 769-3557 Fax: 972 769-3101

Store:  
**Raising Cane's #152**  
**East Interstate 30**  
**Rockwall, TX 75087**  
**Prototype 1**  
**Store #152**

Professional of Record:



Architect Information:

**CSRS**  
IMAGINE SHAPE DELIVER

6767 Perkins Road Suite 200 Baton Rouge, LA 70808  
Telephone: 225 769-0546 Fax: 225 767-0060  
www.csronline.com

Prototype Issue Date:

Design Bulletin Updates:

Date Issued: Bulletin Number:

**FOR PERMIT**

**FOR CONSTRUCTION 13-0805**

Revisions:

#	Date	Description

Sheet Title:

**Planting Plan**

Date: July 1, 2013

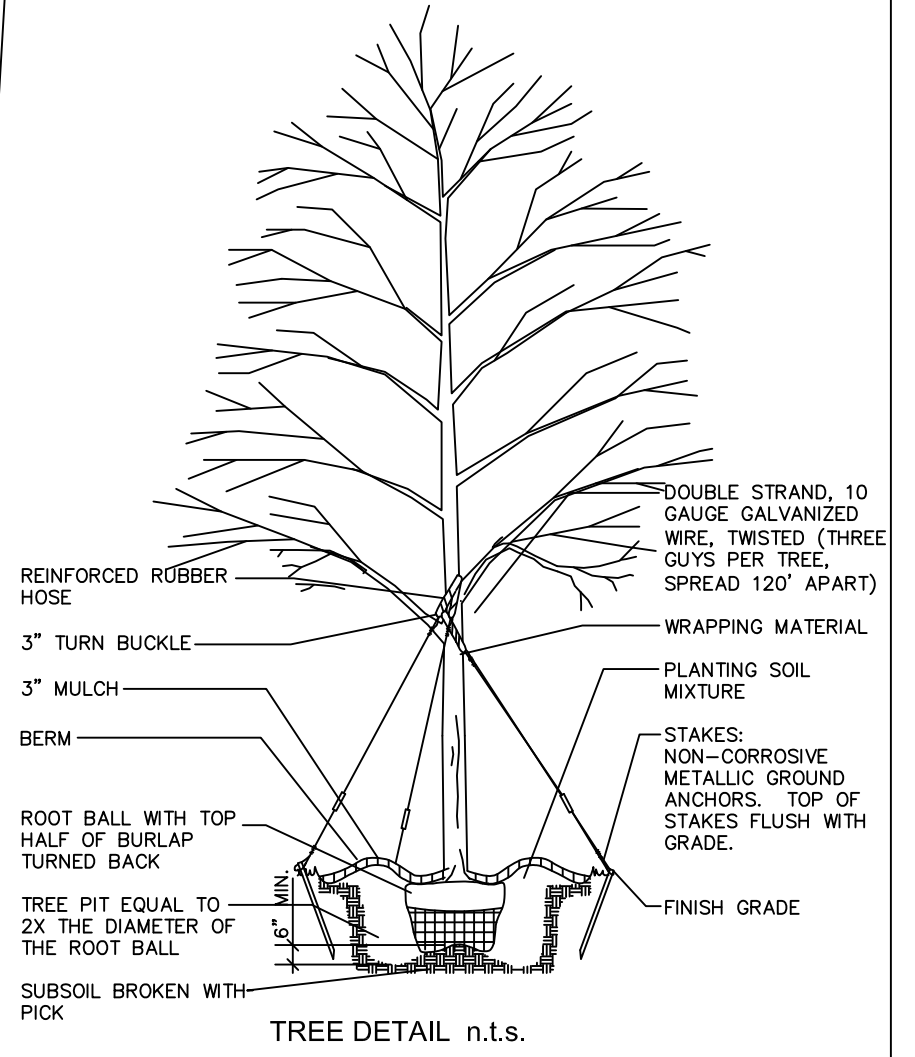
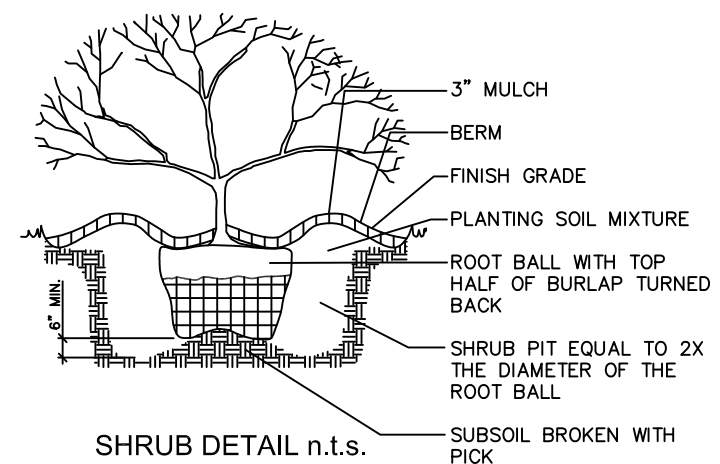
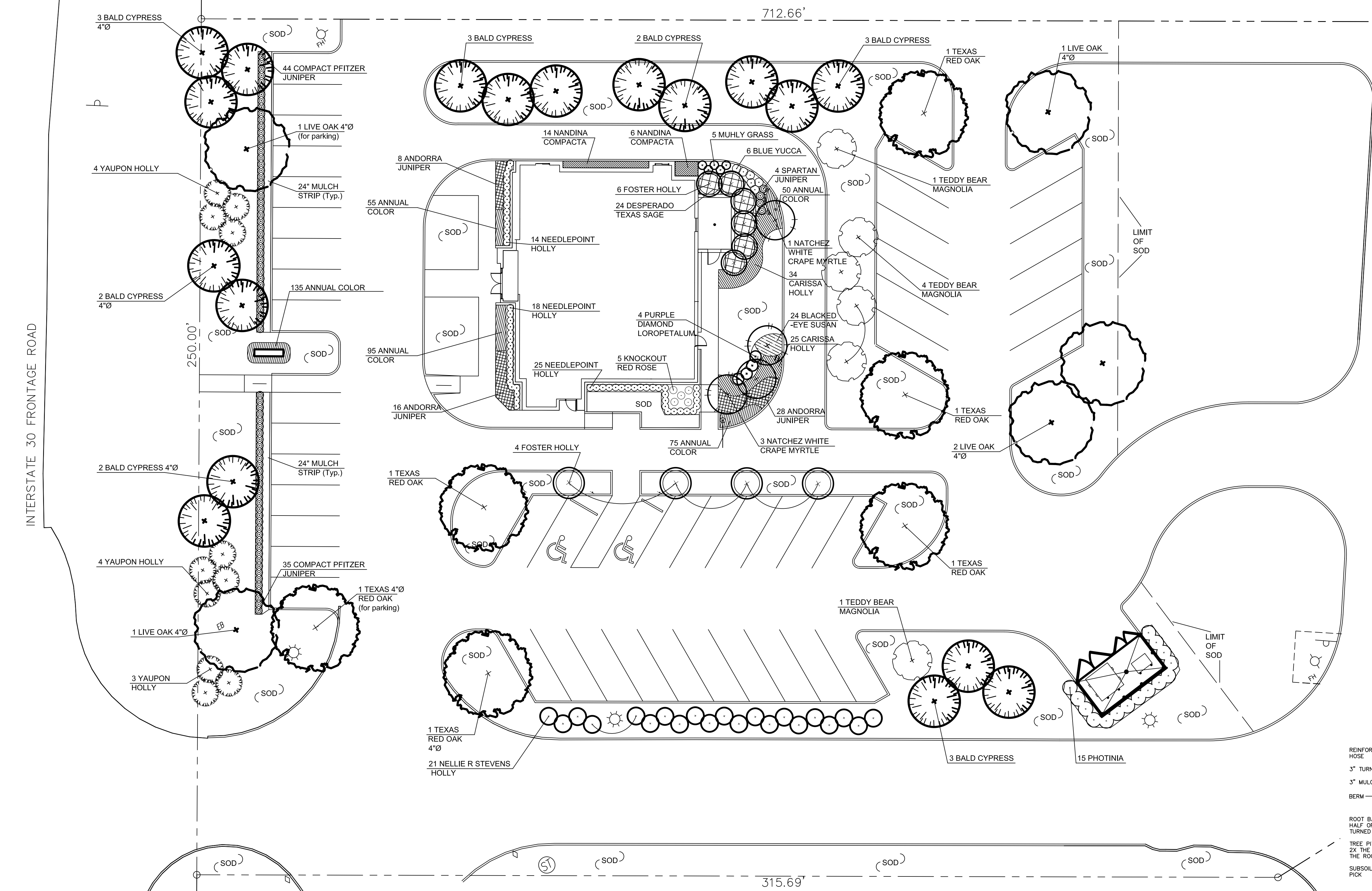
CSRS Project Number: 213034

Drawn By: CCC / FJS 06-11-2013

Sheet Number:

**L1.0**

INTERSTATE 30 FRONTAGE ROAD



- LANDSCAPE NOTES:
- INSTALL 4" MIN. TOP SOIL TO ALL SOD AND SEED AREAS. CONTRACTOR IS RESPONSIBLE FOR FINE GRADING OF SOD AND SEED AREAS. REMOVE STONES, STICKS, AND DEBRIS LARGER THAN 1".
  - ALL SHRUB AREAS, UNLESS SPECIFIED AS OTHER, TO BE BED MULCHED WITH 3" DEPTH OF PARTIALLY DECOMPOSED HARDWOOD MULCH OVER WEED BARRIER.
  - PLANTING SOIL SHALL CONSIST OF 50% SELECT LOAMY TOPSOIL, 25% PEAT MOSS, 25% PIT RUN SAND.
  - GUARANTEE ALL WORK FOR A PERIOD OF ONE YEAR BEGINNING AT THE DATE OF ACCEPTANCE. MAKE ALL REPLACEMENTS PROMPTLY AS PER DIRECTION OF OWNER.
  - MATERIAL SHALL COMPLY WITH THE LATEST EDITION OF THE AMERICAN STANDARD FOR NURSERY STOCK, AMERICAN ASSOCIATION OF NURSERYMEN.
  - WATER AND MAINTAIN ALL PLANT MATERIALS, SEED AND SOD UNTIL INITIAL ACCEPTANCE.
  - REPAIR AT NO COST TO OWNER ALL DAMAGE TO PROPERTY RESULTING FROM LANDSCAPE WORK.
  - NOTIFY UTILITY COMPANY FOR LOCATING ALL UNDERGROUND UTILITIES. AVOID DAMAGE TO UTILITIES DURING THE COURSE OF THE WORK. REPAIR ANY DAMAGE TO UTILITIES, SITE STRUCTURES, ETC., RESULTING FROM LANDSCAPE CONSTRUCTION.
  - COORDINATE INSTALLATION WITH WORK OF OTHER SECTIONS.
  - STAKING AND GUYING OF TREES PER NATIONAL NURSERYMAN'S STANDARDS.
  - SWEEP AND WASH ALL PAVED SURFACES AND REMOVE ALL DEBRIS RESULTING FROM LANDSCAPE OPERATIONS.
  - FIELD VERIFY SOD LIMITS PRIOR TO INSTALLATION.
  - UNDERGROUND IRRIGATION SYSTEM PLANS DESIGNED BY A LICENSED IRRIGATOR WILL BE SUBMITTED WITH THE BUILDING PERMIT APPLICATION.
  - TREES MUST BE PLANTED AT LEAST FIVE FEET FROM WATER, SEWER AND STORM SEWER LINES; NO TREES WITHIN 5' OF ANY UTILITY.

**Plant Schedule RC#152 Rockwall TX**

Qty	Common Name	Botanical Name	Size	Remarks
7	Bald Cypress	Taxodium distichum	4"	Full, specimen form, container grown
11	Bald Cypress	Taxodium distichum	2"	Full, specimen form, container grown
5	Live Oak	Quercus virginiana	4"	Full, specimen form, container grown
2	Texas Red Oak	Quercus texana	4"	Full, specimen form, container grown
4	Texas Red Oak	Quercus texana	2"	Full, specimen form, container grown
6	Teddy Bear Magnolia	Magnolia grandiflora 'Southern Charm'	2"	Full, specimen form, container grown
4	Natchez White Crape Myrtle	Lagerstroemia indica 'Natchez White'	10-12'	Full, container grown
11	Yaupon Holly	Ilex vomitoria	6'-7'	Leggy, tree form
21	Nellie R. Stevens Holly	Ilex x 'Nellie R. Stevens'	6'	Full, container grown
10	Foster Holly	Ilex x attenuata 'Foster'	5-6'	Leggy, tree form
15	Photinia	Photinia x phraseri	4-5'	Full, container grown
4	Spartan Juniper	Juniperus chinensis 'Spartan'	4-5'	Full, container grown
79	Compact Pfitzer Juniper	Juniperus chinensis 'Pfitzer compacta'	30"	Full, container grown, min ht. 30"
52	Andorra Juniper	Juniperus horizontalis 'Youngstown'	3 gal	Full, container grown
6	Blue Yucca	Yucca pendula	3 gal	Full, container grown
59	Carissa Holly	Ilex cornuta 'Carissa'	3 gal	Full, container grown
24	Desperado Texas Sage	Leucophyllum frutescens 'Desperado'	3 gal	Full, container grown
5	Knockout Rose Red	Rosa spp. Red Knockout	3 gal	Full, container grown
5	Muhly Grass	Muhlenbergia capillaris	3 gal	Full, container grown
20	Nandina Compacta	Nandina domestica 'Compacta'	3 gal	Full, container grown
57	Needlepoint Holly	Ilex cornuta 'Needlepoint'	3 gal	Full, container grown
4	Purple Diamond Loropetalum	Loropetalum chinensis 'Purple Diamond'	3 gal	Full, container grown
24	Black Eyed Susan	Rudbeckia hirta 'Goldstrum'	1 gal	Full, container grown
410	Annual Color	Seasonal choice	4" pot	

**LANDSCAPE STANDARDS**

**RC 152 E. I-30, Rockwall TX 75087**

Areas in sq. ft.	TOTAL SITE AREA	PAVING	LANDSCAPE	BUILDING
	128,543	53,371	71,597	3,575

STREET LANDSCAPING	min 10'	Frontage	Required:	Provided:
abutting major arterial street	Hwy I-30	250'	20'	>20'

Street Trees:	3 Canopy + 4 accent @ 100'	Frontage	Caliper	Required:	Provided:
ROW tree spacing required		250'	4" cal	8 Canopy 10 Accent	8 Canopy 11 Accent

VEHICULAR SCREENING	Street:	Required:	Provided:
Living screen entire length of I-30 frontage	Hwy I-30	30" ht.	30"

PARKING AREA TREES	Parking Spaces	Caliper	Required:	Provided:
1 Tree @ 10 parking spaces	43	4" cal	5 tree	6 trees

