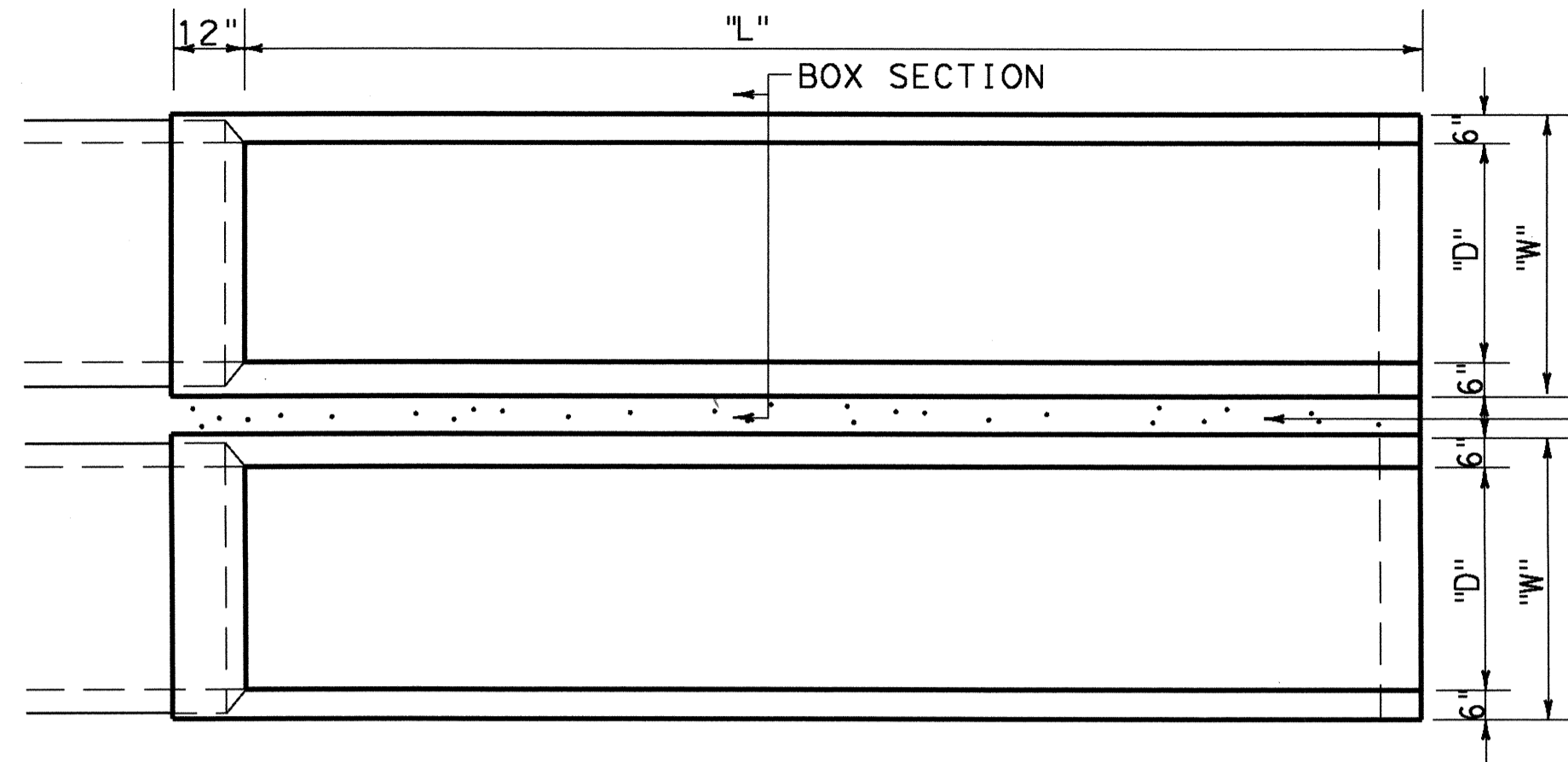


DISCLAIMER: The use of this standard is governed by the "Texas Engineering Practice Act". No warranty of any kind is made by TxDOT for any purpose whatsoever. TxDOT assumes no responsibility for the conversion of this standard to other formats or for incorrect results or damages resulting from its use.

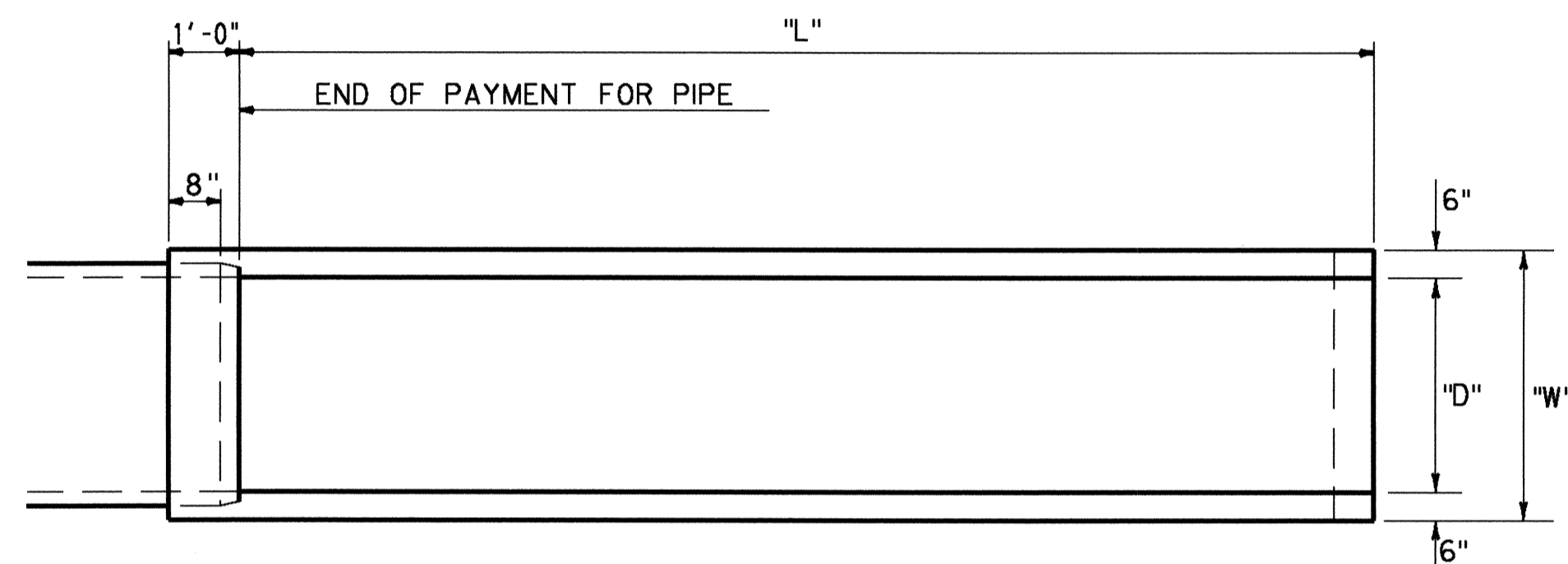
http://www.dot.state.tx.us/ftw/specinfo/standard.htm set1.dgn

LEVELS DISPLAYED	6
1	

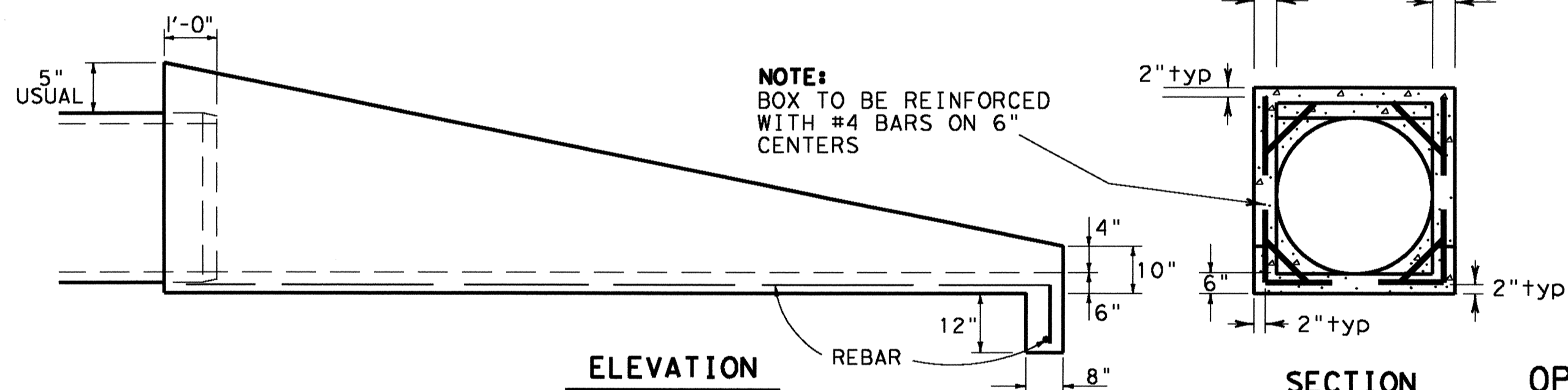


PLAN

5" CL. "B" CONC. RIPRAP (CROSS DRAINAGE ONLY) \*  
 \* FOR MULTIPLE PIPES IN PARALLEL DRAINAGE APPLICATIONS, USE STANDARD SET (3) (FW).



PLAN



ELEVATION

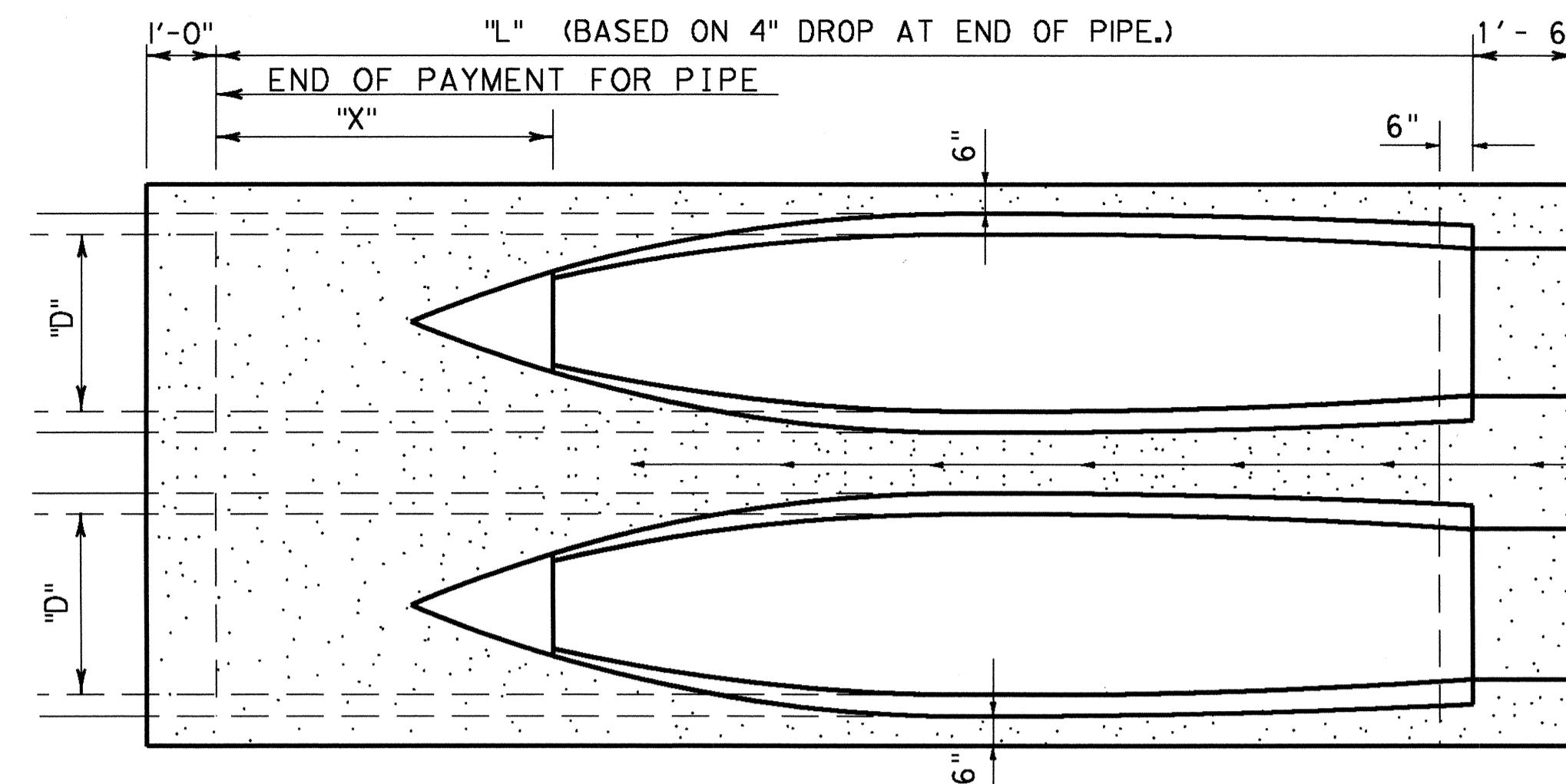
SECTION

OPTION TWO

SLOPED CLASS "A" CONCRETE BOX

"D"	SLOPE	"L"	"W"	CL. A CONC (CY)	5" CL. B CONC RIPRAP (CY)
18"	3:1	4'-4 1/2"	2'-6"	0.56 (N)	0.01 (N-1)
18"	4:1	6'-2"	2'-6"	0.72 (N)	0.02 (N-1)
18"	6:1	9'-9"	2'-6"	1.06 (N)	0.03 (N-1)
18"	8:1	13'-4"	2'-6"	1.39 (N)	0.04 (N-1)
21"	3:1	5'-2 1/4"	2'-9"	0.70 (N)	0.03 (N-1)
21"	4:1	7'-3"	2'-9"	0.91 (N)	0.04 (N-1)
21"	6:1	11'-4 1/4"	2'-9"	1.33 (N)	0.06 (N-1)
21"	8:1	15'-6"	2'-9"	1.75 (N)	0.07 (N-1)
24"	3:1	6'-0"	3'-0"	0.86 (N)	0.05 (N-1)
24"	4:1	8'-4"	3'-0"	1.12 (N)	0.06 (N-1)
24"	6:1	13'-0"	3'-0"	1.64 (N)	0.09 (N-1)
24"	8:1	17'-8"	3'-0"	2.16 (N)	0.12 (N-1)
27"	3:1	6'-9 1/4"	3'-3"	1.03 (N)	0.07 (N-1)
27"	4:1	9'-5"	3'-3"	1.35 (N)	0.09 (N-1)
27"	6:1	14'-7 1/2"	3'-3"	1.98 (N)	0.13 (N-1)
27"	8:1	19'-10"	3'-3"	2.61 (N)	0.18 (N-1)
30"	3:1	7'-7 1/2"	3'-6"	1.22 (N)	0.09 (N-1)
30"	4:1	10'-6"	3'-6"	1.59 (N)	0.12 (N-1)
30"	6:1	16'-3"	3'-6"	2.35 (N)	0.18 (N-1)
30"	8:1	22'-0"	3'-6"	3.10 (N)	0.24 (N-1)

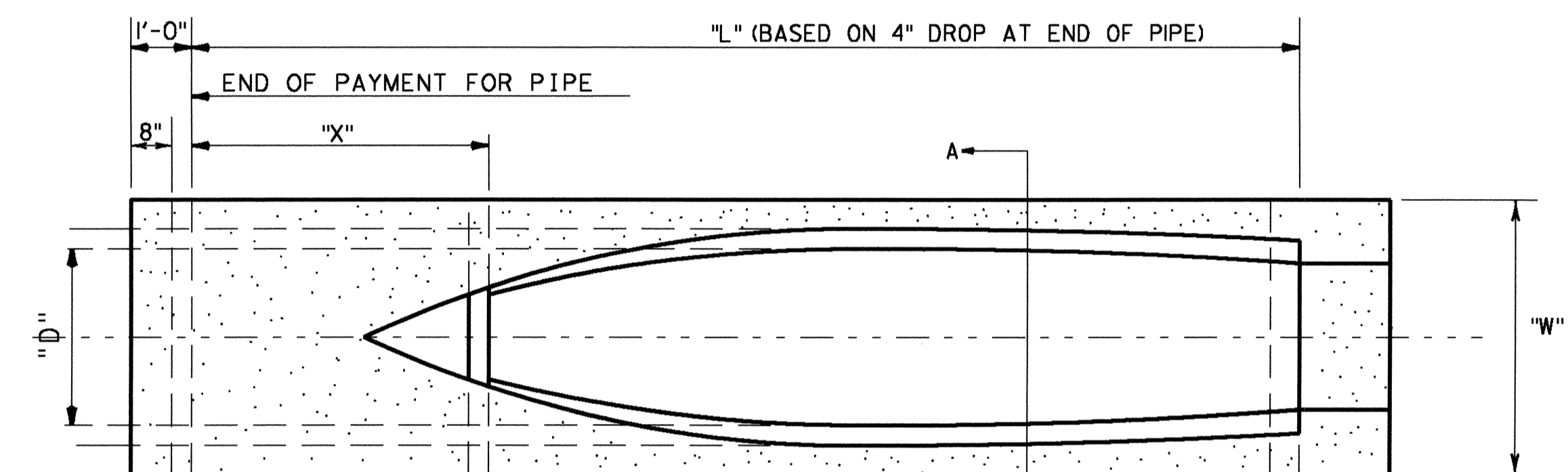
NOTE: "N" = # OF PIPES. CONCRETE QUANTITIES ARE SHOWN FOR CONTRACTOR'S INFORMATION ONLY.



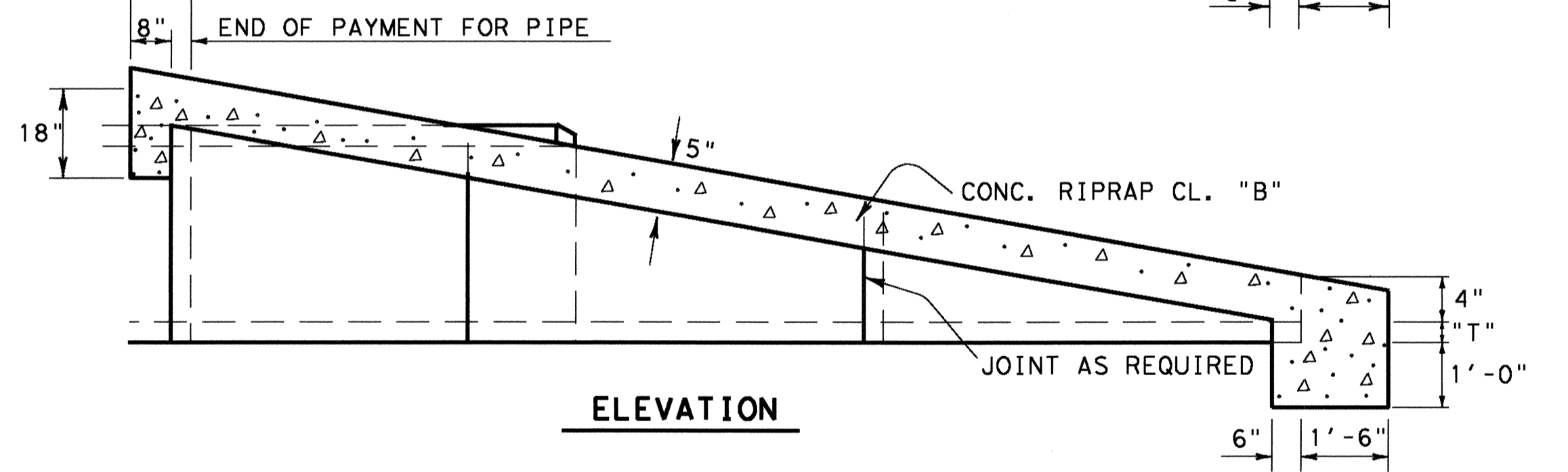
PLAN

MULTIPLE PIPES PLAN (CROSS DRAINAGE ONLY) \*

\* FOR MULTIPLE PIPES IN PARALLEL DRAINAGE APPLICATIONS, USE STANDARD SET (3) (FW).

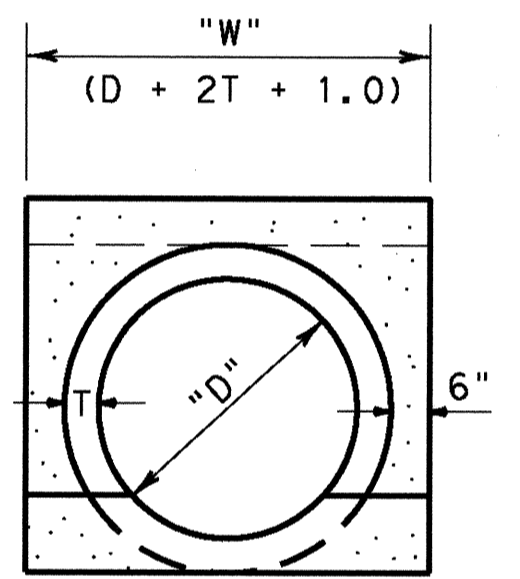


PLAN



ELEVATION

SLOPED REINFORCED CONCRETE PIPE



A-A

OPTION ONE

"D"	SLOPE	"T"	"L"	"X"	1 PIPE		2 PIPES		MULTIPLE PIPES N = # OF PIPES	
					"W"	RIPRAP	"W"	RIPRAP	"W" (INCHES)	RIPRAP (CY)
18"	3:1	2 1/2"	5'-1 1/4"	1'-7 1/4"	2'-11"	0.48 CY	5'-7"	0.91 CY	32 (N)+3	0.0532+0.430 (N)
18"	4:1	2 1/2"	6'-10 1/2"	2'-2 1/2"	2'-11"	0.54 CY	5'-7"	1.01 CY	32 (N)+3	0.0608+0.475 (N)
18"	6:1	2 1/2"	10'-5 1/2"	3'-5 1/2"	2'-11"	0.64 CY	5'-7"	1.20 CY	32 (N)+3	0.0754+0.560 (N)
18"	8:1	2 1/2"	14'-0 1/4"	4'-8 1/4"	2'-11"	0.73 CY	5'-7"	1.37 CY	32 (N)+3	0.0895+0.642 (N)
21"	3:1	2 3/4"	5'-11"	1'-8"	3'-2 1/2"	0.55 CY	6'-3"	1.06 CY	36.5 (N)+2	0.0379+0.510 (N)
21"	4:1	2 3/4"	7'-11 1/2"	2'-3 1/2"	3'-2 1/2"	0.61 CY	6'-3"	1.17 CY	36.5 (N)+2	0.0436+0.566 (N)
21"	6:1	2 3/4"	12'-1"	3'-7"	3'-2 1/2"	0.73 CY	6'-3"	1.40 CY	36.5 (N)+2	0.0546+0.671 (N)
21"	8:1	2 3/4"	16'-2 1/4"	4'-10 1/4"	3'-2 1/2"	0.84 CY	6'-3"	1.61 CY	36.5 (N)+2	0.0655+0.773 (N)
24"	3:1	3"	6'-8 1/4"	1'-8 1/4"	3'-6"	0.61 CY	6'-11"	1.21 CY	41 (N)+1	0.0201+0.594 (N)
24"	4:1	3"	9'-0 1/2"	2'-4 1/2"	3'-6"	0.68 CY	6'-11"	1.35 CY	41 (N)+1	0.0233+0.661 (N)
24"	6:1	3"	13'-8 1/4"	3'-8 1/2"	3'-6"	0.82 CY	6'-11"	1.61 CY	41 (N)+1	0.0295+0.790 (N)
24"	8:1	3"	18'-4 1/4"	5'-0 1/2"	3'-6"	0.95 CY	6'-11"	1.87 CY	41 (N)+1	0.0356+0.915 (N)
27"	3:1	3 1/4"	7'-6 1/2"	1'-9 1/2"	3'-9 1/2"	0.68 CY	7'-7"	1.36 CY	45.5 (N)	0.682 (N)
27"	4:1	3 1/4"	10'-1 1/2"	2'-5 1/2"	3'-9 1/2"	0.76 CY	7'-7"	1.53 CY	45.5 (N)	0.763 (N)
27"	6:1	3 1/4"	15'-4"	3'-10"	3'-9 1/2"	0.92 CY	7'-7"	1.83 CY	45.5 (N)	0.917 (N)
27"	8:1	3 1/4"	20'-6 1/4"	5'-2 1/4"	3'-9 1/2"	1.07 CY	7'-7"	2.13 CY	45.5 (N)	1.066 (N)
30"	3:1	3 1/2"	8'-4 1/4"	1'-10 1/4"	4'-1"	0.75 CY	8'-3"	1.53 CY	50 (N)-1	-0.022+0.775 (N)
30"	4:1	3 1/2"	11'-2 1/2"	2'-6 1/2"	4'-1"	0.84 CY	8'-3"	1.71 CY	50 (N)-1	-0.026+0.870 (N)
30"	6:1	3 1/2"	16'-1 1/2"	3'-11 1/2"	4'-1"	1.02 CY	8'-3"	2.07 CY	50 (N)-1	-0.033+1.051 (N)
30"	8:1	3 1/2"	22'-8 1/4"	5'-4 1/4"	4'-1"	1.19 CY	8'-3"	2.41 CY	50 (N)-1	-0.041+1.228 (N)

AS-BUILT

REVISED - JULY 1983 - J.B.C.  
 REVISED - AUG. 1984 - H.G.O.  
 REVISED - APR. 1985 - R.O.N.  
 REVISED - OCT. 1986 - L.J.M.  
 REVISED - FEB. 1987 - J.A.T.  
 REVISED - NOV. 1991 - M.J.N.  
 REVISED - FEB. 1994 - E.R.F.



NOTE: CONCRETE QUANTITIES ARE SHOWN FOR CONTRACTOR'S INFORMATION ONLY.



© 2003 by Texas Department of Transportation. All rights reserved.

TYPE II  
 SAFETY END TREATMENT  
 -CROSS OR PARALLEL DRAINAGE-  
 18" TO 30" PIPES

SET (1) (FW)

DRAWN	TITLE NO.	STATE	FEDERAL AID PROJECT NO.	SHEET NO.
CHECKED	6	TEXAS		
TRACED	STATE DIST. NO.	COUNTY	CONTROL NO.	SECTION NO.
CHECKED	FORT WORTH			