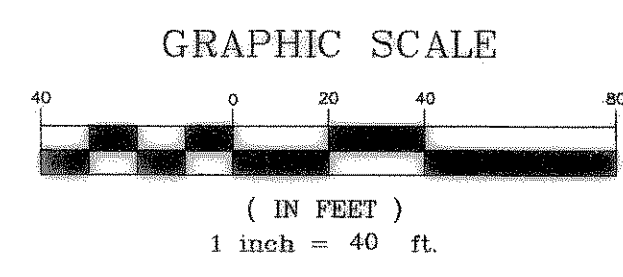


East Bound Lane  
**INTERSTATE 30**  
 ASPHALT PAVEMENT  
 Service Road

CURVE	LENGTH	RADIUS	DELTA	TANGENT
C1	64.10	100.00	36°43'37"	33.19
C2	175.62	150.00	67°04'54"	99.44
C3	235.62	150.00	90°00'00"	150.00
C4	95.25	150.00	36°22'54"	49.29
C5	226.97	200.00	65°01'18"	127.47
C6	37.56	90.00	23°54'32"	19.06
C7	340.67	660.00	29°34'27"	174.22



**"RECORD DRAWINGS"**  
 NOTE: THE INTENT OF THE OWNER AND ENGINEER WAS TO CONSTRUCT THE IMPROVEMENTS ACCORDING TO THESE PLANS AS APPROVED BY THE CITY OF ROCKWALL. THE LINES AND GRADES WERE SET ON THE GROUND FOR CONSTRUCTION ACCORDING TO SAID PLANS. WE ARE NOT AWARE OF ANY CHANGES OR REVISIONS TO THESE PLANS DURING CONSTRUCTION EXCEPT AS NOTED ON THE PLANS.

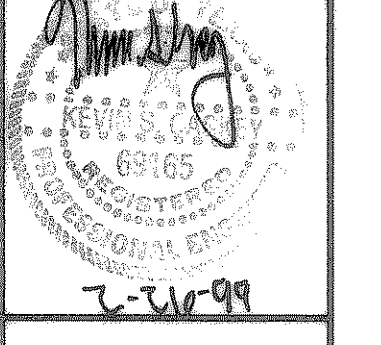
- STORM SEWER NOTES:**
1. THE CONTRACTOR SHALL FIELD VERIFY THE VERTICAL AND HORIZONTAL LOCATIONS OF ALL EXISTING UTILITIES PRIOR TO START OF CONSTRUCTION. THE CONTRACTOR SHALL NOTIFY THE ENGINEER AND CONSTRUCTION MANAGER IMMEDIATELY IF A CONFLICT IS DISCOVERED.
  2. THE CONTRACTOR SHALL VERIFY AND COORDINATE ALL DIMENSIONS SHOWN, INCLUDING THE HORIZONTAL AND VERTICAL LOCATION OF CURB INLETS, GRATE INLETS AND ALL UTILITIES CROSSING THE STORM SEWER. FLOW LINES AND RIMS OF PROPOSED INLETS SHALL BE VERIFIED WITH THE PROPOSED GRADE PRIOR TO CONSTRUCTION.
  3. THE END OF ALL STORM SEWER LATERALS THAT CONNECT TO WORK BY PLUMBER OR OTHER CONTRACTOR SHALL BE TIGHTLY PLUGGED OR CAPPED AND MARKED UNTIL THE CONNECTION IS MADE.
  4. THE SITE UTILITY CONTRACTOR SHALL PROVIDE ALL MATERIALS AND APPURTENANCES NECESSARY FOR COMPLETE INSTALLATION OF THE STORM SEWER.
  5. FOR CONTINUATION OF STORM SEWER LINES 5' FROM BUILDING, REFER TO ARCH. AND M.E.P. PLANS.
  6. CONTRACTOR SHALL PROVIDE TRENCH SAFETY SYSTEM PLANS AS REQUIRED BY THE OWNER, CITY OF ROCKWALL AND/OR CITY ORDINANCE.
  7. ALL STORM SEWER PIPES NOT WITHIN AN EASEMENT ARE PRIVATE.
  8. CONTRACTOR IS RESPONSIBLE FOR OBTAINING ALL CONSTRUCTION PERMITS.
  9. ALL STORM SEWER PIPE 18" AND LARGER, IS RECOMMENDED TO BE REINFORCED CONCRETE PIPE (RCP), CLASS III, CONFORMING TO ASTM C-76-81A (OR LATEST REVISION), WITH JOINTS CONFORMING TO ASTM C-443 OR APPROVED EQUAL. IN CASES OF MINIMAL COVER, AS SPECIFIED BY PLANS, TYPE IV RCP SHOULD BE USED. STORM SEWERS SHALL BE BEDDED AND BACK FILLED IN ACCORDANCE WITH THE SPECIFICATIONS AND DETAILS. "HDPE" OR "CMP" TYPE PIPES MAY BE SUBSTITUTED FOR RCP PER APPROVAL OF THE ENGINEER.
  10. THE GENERAL CONTRACTOR AND ALL SUBCONTRACTORS SHALL VERIFY THE SUITABILITY OF ALL EXISTING AND PROPOSED SITE CONDITIONS INCLUDING GRADES AND DIMENSIONS BEFORE COMMENCEMENT OF CONSTRUCTION. THE ENGINEER SHALL BE NOTIFIED IMMEDIATELY OF ANY DISCREPANCIES.
  11. ALL PROPOSED CONTOURS ARE APPROXIMATE. PROPOSED SPOT ELEVATIONS AND DESIGNATED GRADIENT ARE TO BE USED IN THE EVENT OF ANY DISCREPANCIES.
  12. UTILITY COMPANIES SHALL BE CONTACTED PRIOR TO CONSTRUCTION TO LOCATE AND DISCONNECT SERVICE.
  13. ANY PUBLIC UTILITIES, POLES, SIGNS, ETC. IN RIGHT-OF-WAY SHALL REMAIN.
  14. PER REQUEST OF NTMWD, ALL NTMWD LINES ARE TO BE UNCOVERED AND TOPS VERIFIED PRIOR TO CONSTRUCTION OF CROSSING STORM, SEWER, OR WATER LINES.
  15. ANSI/ASTM C 850-77 (BOX CULVERT) AND TYPE IV RCP (PIPE) IS TO BE USED WHERE PAVEMENT COVER IS LESS THAN TWO FEET BETWEEN TOP OF PAVEMENT AND TOP OF PIPE. SEE SHEETS C-11 AND C-12 (STORM DRAINAGE PROFILES).

- NTMWD NOTES**
1. NORTH TEXAS MUNICIPAL WATER DISTRICT (NTMWD) PIPELINE IS LOCATED ON SITE.
  2. OPERATION OF HEAVY EARTHMOVING EQUIPMENT, COMPACTION EQUIPMENT OR HEAVY CONSTRUCTION EQUIPMENT, SUCH AS CONCRETE TRUCKS, SHALL BE RESTRICTED TO SPECIFIC CROSSING POINTS ACROSS NTMWD EASEMENTS, AS APPROVED BY THE NTMWD. THE CROSSINGS SHALL BE DESIGNATED AND VERIFIED TO PROVIDE A MINIMUM OF 5 FEET OF COVER.
  3. TO ASSURE THAT THE EXISTING PIPELINE IS NOT DAMAGED BY PLACING OF SIGNIFICANT LOADS OVER THE NTMWD PIPELINE, NO MATERIALS SHALL BE STOCKPILED ON THE NTMWD EASEMENT WITHOUT AUTHORIZATION FROM THE NTMWD. IF THE CONTRACTOR DESIRES TO USE NTMWD'S EASEMENT FOR STOCKPILE OF MATERIALS, CONTACT NTMWD ENGINEERING AT (972) 442-5405 SO YOUR PLANS FOR USE OF NTMWD'S EASEMENT CAN BE REVIEWED.
  4. IN AREAS WHERE THE COVER BETWEEN THE TOP OF THE NTMWD PIPELINE AND THE BOTTOM OF THE SUB-GRADE IS THREE (3) FEET OR LESS, IT IS REQUESTED THAT THE SUB-GRADE PREPARATION BE DELETED AND A THICKENED PAVEMENT SECTION BE USED TO LIMIT CONSTRUCTION ACTIVITIES OVER THE PIPELINE.
  5. CROSSING OF THE NTMWD EASEMENT WITH OTHER UTILITIES, SUCH AS TV CABLE, PHONE, GAS AND ELECTRIC, SHALL BE COORDINATED WITH THE NTMWD TO AVOID DAMAGE TO THE NTMWD FACILITIES.
  6. OUTDOOR LIGHTING, LANDSCAPING, SCREENING WALLS OR OTHER FACILITIES SHALL NOT BE INSTALLED IN NTMWD EASEMENTS WITHOUT WRITTEN APPROVAL OF THE NTMWD.
  7. UNLESS OTHERWISE SHOWN OR REQUIRED, A MINIMUM OF ONE-FOOT CLEARANCE SHALL BE PROVIDED FOR ALL UTILITIES CROSSING THE NTMWD PIPELINES.
  8. "THE CONTRACTOR SHALL CONTACT NTMWD ENGINEERING AT (972)442-5405 AT LEAST 48 HOURS PRIOR TO PERFORMING ANY WORK IN THE VICINITY OF THE NTMWD FACILITIES."

**BENCHMARK:**  
 CITY OF ROCKWALL MONUMENT ON TOP OF INLET ON THE SOUTH SIDE OF MARKET CENTER DRIVE AND APPROX. 500 FEET WEST OF THE WEST R.O.W. LINE OF INTERSTATE HIGHWAY 30.  
 ELEV. = 538.51

TOP OF CURB @ THE CENTER OF A INLET ON THE SOUTH SIDE OF MARKET CENTER DRIVE AND APPROX. 850 FEET WEST OF THE WEST R.O.W. LINE OF INTERSTATE HIGHWAY 30.  
 ELEV. = 538.27

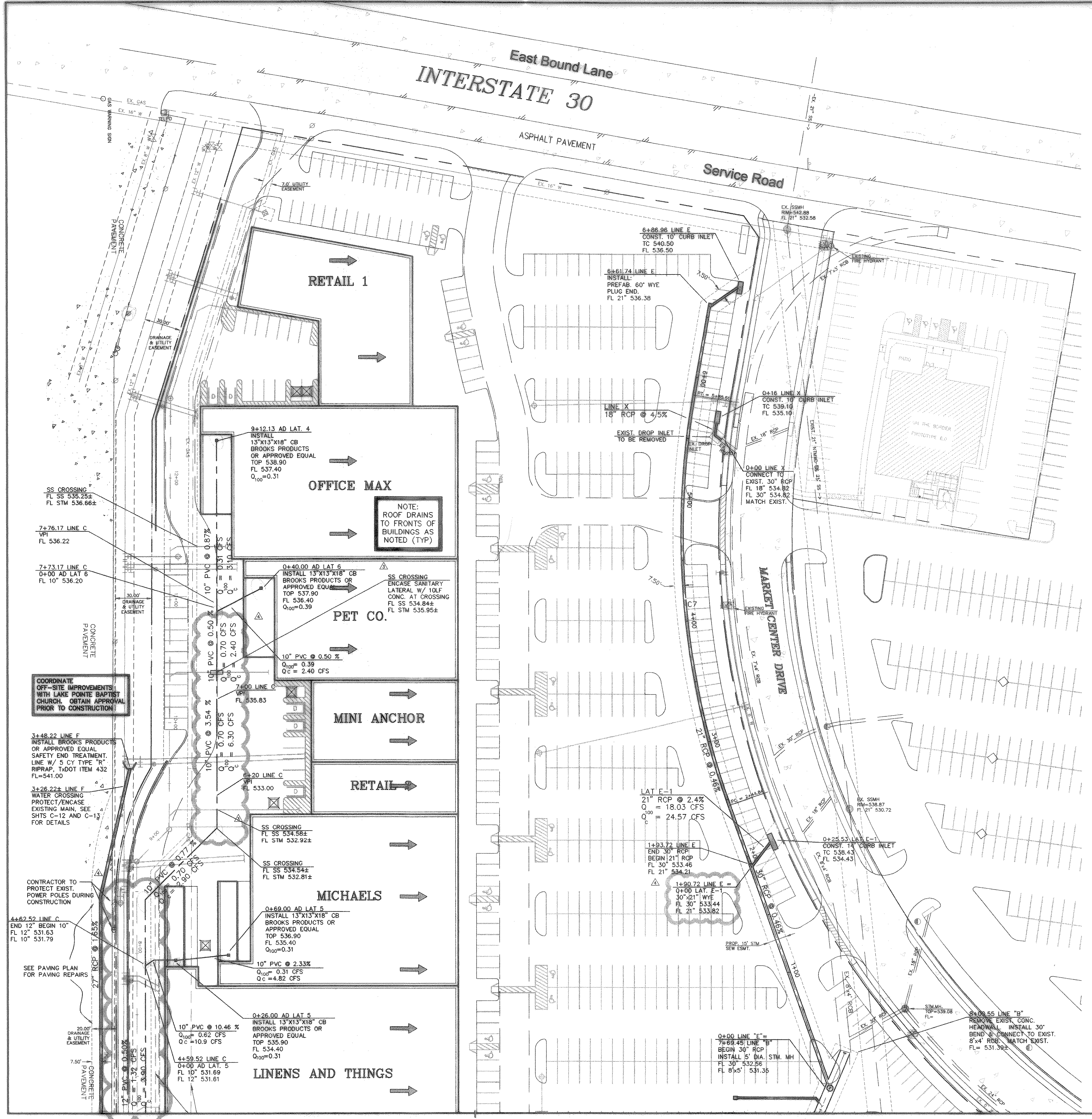
**Kimley-Horn and Associates, Inc.**  
 Tel. No. (972) 770-3300  
 Fax No. (972) 258-8620  
 12700 Park Central Drive, Suite 1800  
 Dallas, Texas 75251



**ROCKWALL RETAIL CENTER**  
**STORM DRAINAGE PLAN - NORTH**  
 CITY OF ROCKWALL, TEXAS

**STORM DRAINAGE PLAN - NORTH**

Scale: 1" = 40'  
 Designed by: NES  
 Drawn by: DLC  
 Checked by: KSG  
 Date: JANUARY, 1999  
 Project No. 063382.00



COORDINATE OFF-SITE IMPROVEMENTS WITH LAKE POINTE BAPTIST CHURCH. OBTAIN APPROVAL PRIOR TO CONSTRUCTION

NOTE: ROOF DRAINS TO FRONTS OF BUILDINGS AS NOTED (TYP)

CONTRACTOR TO PROTECT EXIST. POWER POLES DURING CONSTRUCTION

SEE PAVING PLAN FOR PAVING REPAIRS