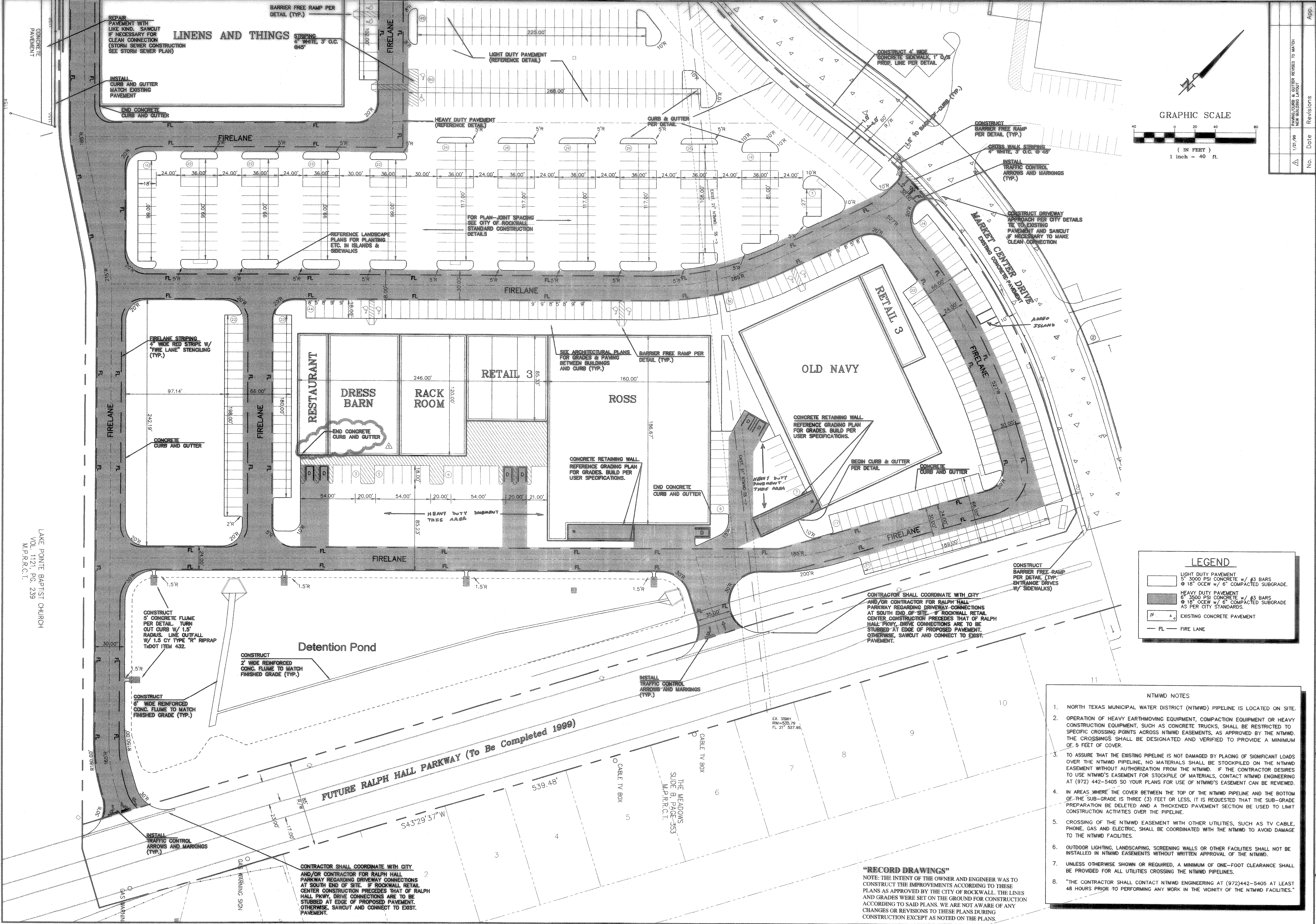
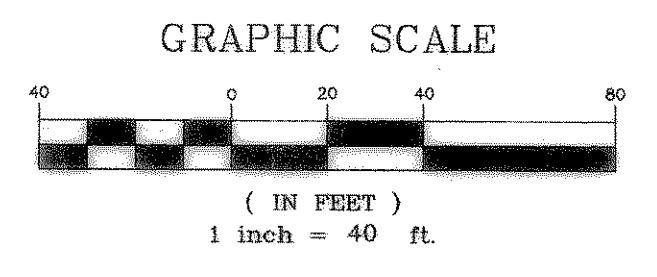


ROCKWALL RETAIL
CENTER
CITY OF ROCKWALL, TEXAS

PAVING AND
DIMENSION CONTROL
PLAN - SOUTH

Scale:	1" = 40'
Designed by:	NES
Drawn by:	DLC
Checked by:	KSG
Date:	JANUARY, 1999
Project No.:	063382.00

No.	Date	Revisions
1	1/21/99	PAVING/CURB & GUTTER REVISED TO MATCH NEW BUILDING LAYOUT



LEGEND

	LIGHT DUTY PAVEMENT 5" 3000 PSI CONCRETE w/ #3 BARS @ 18" O.C.W w/ 6" COMPACTED SUBGRADE.
	HEAVY DUTY PAVEMENT 6" 3500 PSI CONCRETE w/ #3 BARS @ 18" O.C.W w/ 8" COMPACTED SUBGRADE AS PER CITY STANDARDS.
	EXISTING CONCRETE PAVEMENT
	FL - FIRE LANE

- NTMWD NOTES**
- NORTH TEXAS MUNICIPAL WATER DISTRICT (NTMWD) PIPELINE IS LOCATED ON SITE.
 - OPERATION OF HEAVY EARTHMOVING EQUIPMENT, COMPACTION EQUIPMENT OR HEAVY CONSTRUCTION EQUIPMENT, SUCH AS CONCRETE TRUCKS, SHALL BE RESTRICTED TO SPECIFIC CROSSING POINTS ACROSS NTMWD EASEMENTS, AS APPROVED BY THE NTMWD. THE CROSSINGS SHALL BE DESIGNATED AND VERIFIED TO PROVIDE A MINIMUM OF 5 FEET OF COVER.
 - TO ASSURE THAT THE EXISTING PIPELINE IS NOT DAMAGED BY PLACING OF SIGNIFICANT LOADS OVER THE NTMWD PIPELINE, NO MATERIALS SHALL BE STOCKPILED ON THE NTMWD EASEMENT WITHOUT AUTHORIZATION FROM THE NTMWD. IF THE CONTRACTOR DESIRES TO USE NTMWD'S EASEMENT FOR STOCKPILE OF MATERIALS, CONTACT NTMWD ENGINEERING AT (972) 442-5405 SO YOUR PLANS FOR USE OF NTMWD'S EASEMENT CAN BE REVIEWED.
 - IN AREAS WHERE THE COVER BETWEEN THE TOP OF THE NTMWD PIPELINE AND THE BOTTOM OF THE SUB-GRADE IS THREE (3) FEET OR LESS, IT IS REQUESTED THAT THE SUB-GRADE PREPARATION BE DELETED AND A THICKENED PAVEMENT SECTION BE USED TO LIMIT CONSTRUCTION ACTIVITIES OVER THE PIPELINE.
 - CROSSING OF THE NTMWD EASEMENT WITH OTHER UTILITIES, SUCH AS TV CABLE, PHONE, GAS AND ELECTRIC, SHALL BE COORDINATED WITH THE NTMWD TO AVOID DAMAGE TO THE NTMWD FACILITIES.
 - OUTDOOR LIGHTING, LANDSCAPING, SCREENING WALLS OR OTHER FACILITIES SHALL NOT BE INSTALLED IN NTMWD EASEMENTS WITHOUT WRITTEN APPROVAL OF THE NTMWD.
 - UNLESS OTHERWISE SHOWN OR REQUIRED, A MINIMUM OF ONE-FOOT CLEARANCE SHALL BE PROVIDED FOR ALL UTILITIES CROSSING THE NTMWD PIPELINES.
 - "THE CONTRACTOR SHALL CONTACT NTMWD ENGINEERING AT (972)442-5405 AT LEAST 48 HOURS PRIOR TO PERFORMING ANY WORK IN THE VICINITY OF THE NTMWD FACILITIES."

"RECORD DRAWINGS"
NOTE: THE INTENT OF THE OWNER AND ENGINEER WAS TO CONSTRUCT THE IMPROVEMENTS ACCORDING TO THESE PLANS AS APPROVED BY THE CITY OF ROCKWALL. THE LINES AND GRADES WERE SET ON THE GROUND FOR CONSTRUCTION ACCORDING TO SAID PLANS. WE ARE NOT AWARE OF ANY CHANGES OR REVISIONS TO THESE PLANS DURING CONSTRUCTION EXCEPT AS NOTED ON THE PLANS.

CONTRACTOR SHALL COORDINATE WITH CITY AND/OR CONTRACTOR FOR RALPH HALL PARKWAY REGARDING DRIVEWAY CONNECTIONS AT SOUTH END OF SITE. IF ROCKWALL RETAIL CENTER CONSTRUCTION PRECEDES THAT OF RALPH HALL PARKWAY, DRIVE CONNECTIONS ARE TO BE STUBBED AT EDGE OF PROPOSED PAVEMENT. OTHERWISE, SAWCUT AND CONNECT TO EXIST. PAVEMENT.

CONSTRUCT 5' CONCRETE FLUME PER DETAIL. TURN OUT CURB W/ 1.5' RADIUS. LINE OUTFALL W/ 1.5 CY TYPE "R" RIPRAP TxDOT ITEM 432.

CONSTRUCT 2' WIDE REINFORCED CONC. FLUME TO MATCH FINISHED GRADE (TYP.)

CONSTRUCT 6' WIDE REINFORCED CONC. FLUME TO MATCH FINISHED GRADE (TYP.)

REPAIR PAVEMENT WITH LIKE KIND. SAWCUT IF NECESSARY FOR CLEAN CONNECTION (STORM SEWER CONSTRUCTION SEE STORM SEWER PLAN)

INSTALL CURB AND GUTTER MATCH EXISTING PAVEMENT

END CONCRETE CURB AND GUTTER

LAKE POINTE BAPTIST CHURCH
VOL. 11721, PG. 239
M.P.R.C.T.