

SHEET NO. 18	JOB NO. 0020	CITY OF ROCKWALL QUAIL RUN VALLEY NO. 2	REVISION DESCRIPTION		
			DATE	SCALE	H.T.E.
PROPOSED DRAINAGE LINE 1 AND M	231 CUS THOMASSON ROAD, SUITE 102 P.O. BOX 28355 CONSULTING ENGINEER HAROLD L. EVANS	REV. PER 4th REVIEW	7/13/01		
		REV. PER 2nd REVIEW	5/10/01		

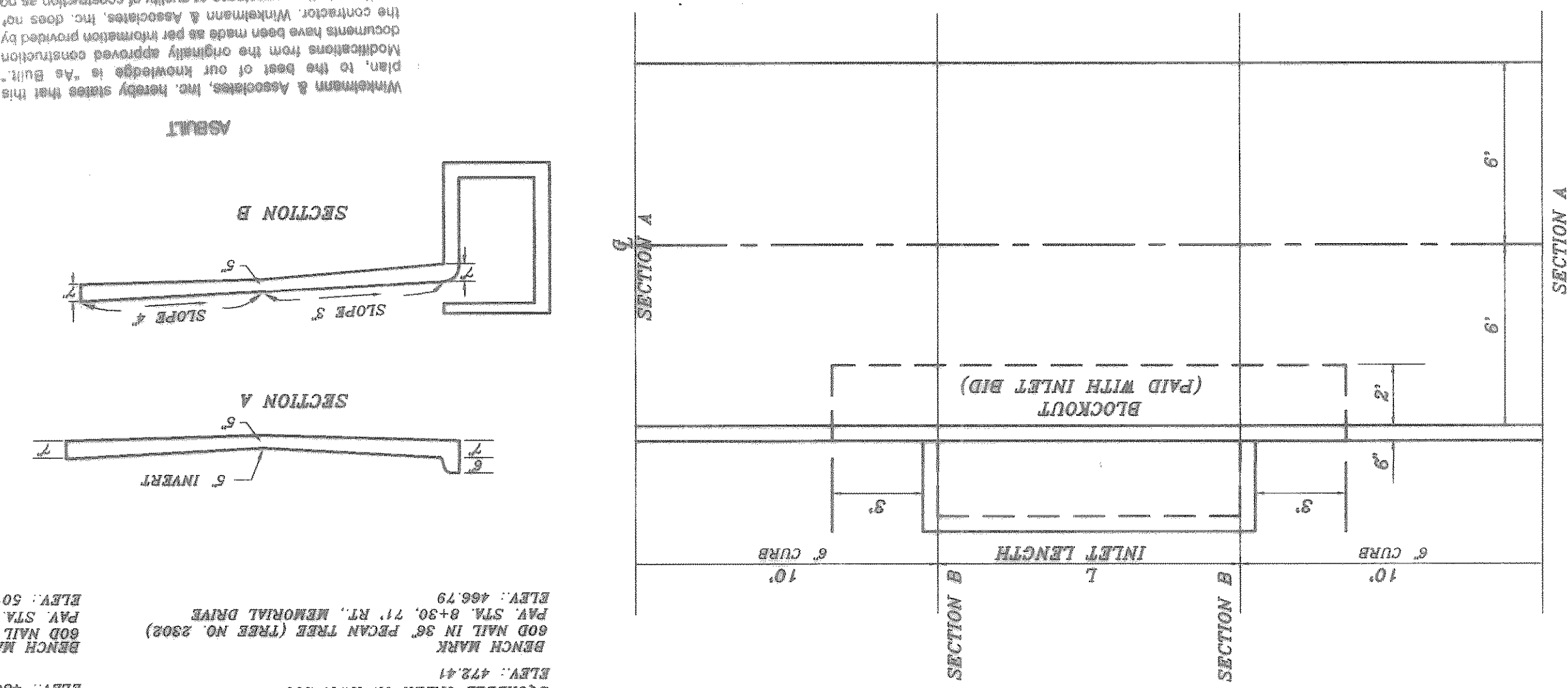
CURVE	RADIUS	LENGTH	TANGENT	CHORD	BEARING	DELTA
C1	100.00'	124.45'	71.23'	116.58'	50°15'44.98"	71°19'27"
C2	348.11'	222.03'	117.15'	222.03'	N15°08'34.7"E	37°11'41"
C3	214.21'	43.74'	21.95'	43.66'	N08°18'14.7"W	11°41'56"
C4	90.00'	31.42'	15.71'	31.42'	S65°58'15.4"W	30°29'07"
C5	138.59'	65.85'	33.56'	65.85'	N68°28'04.5"E	27°13'29"



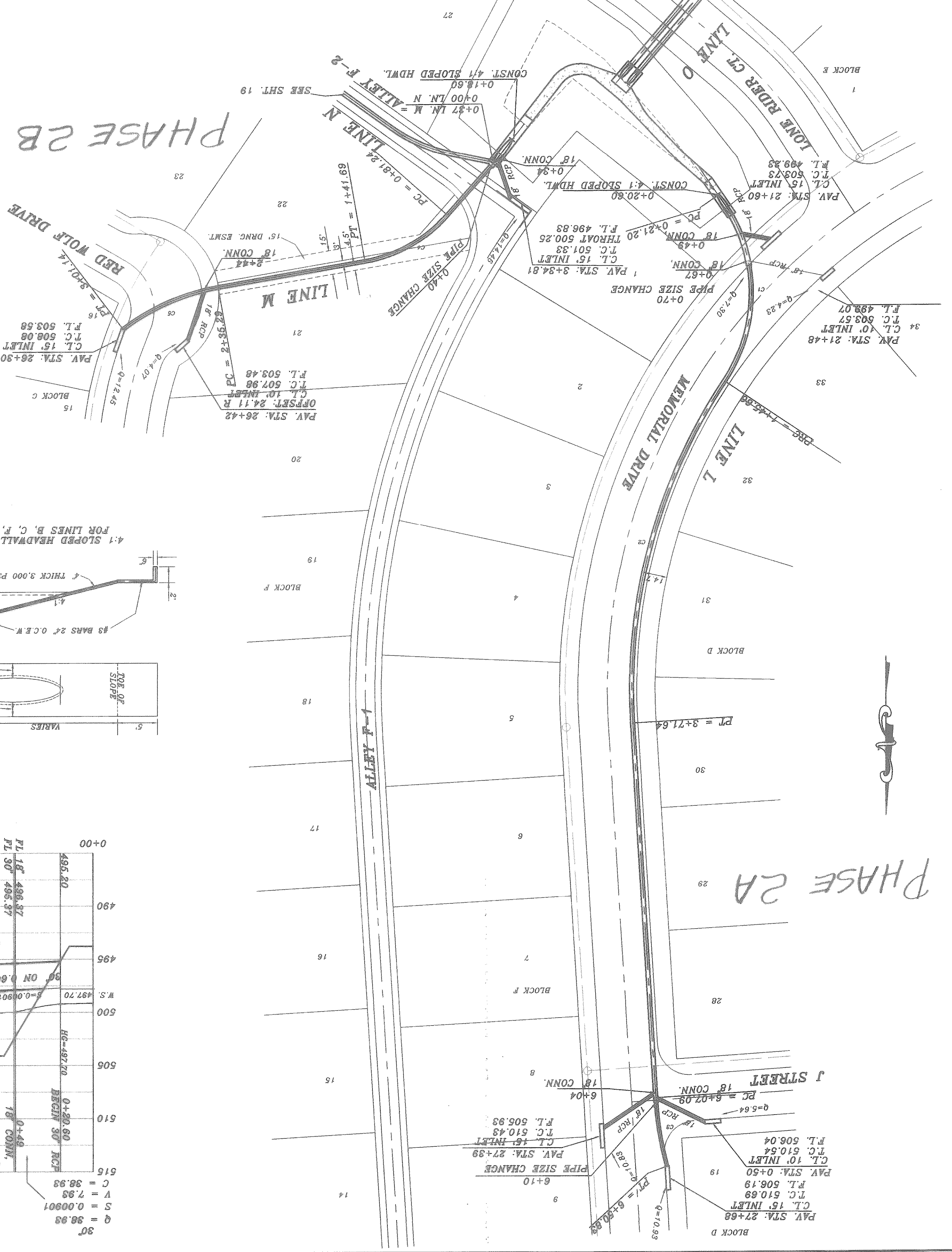
Winkelman & Associates, Inc. certifies as to the accuracy of this plan, to the best of our knowledge in accordance with the original approved construction documents. Modifications from the original approved construction documents have been made as per information provided by the contractor. Winkelman & Associates, Inc. does not certify as to the accuracy of any information provided by the contractor. Winkelman & Associates, Inc. does not certify as to the accuracy of any information provided by the contractor.

DATE: 9-27-02
DATE: 9-27-02

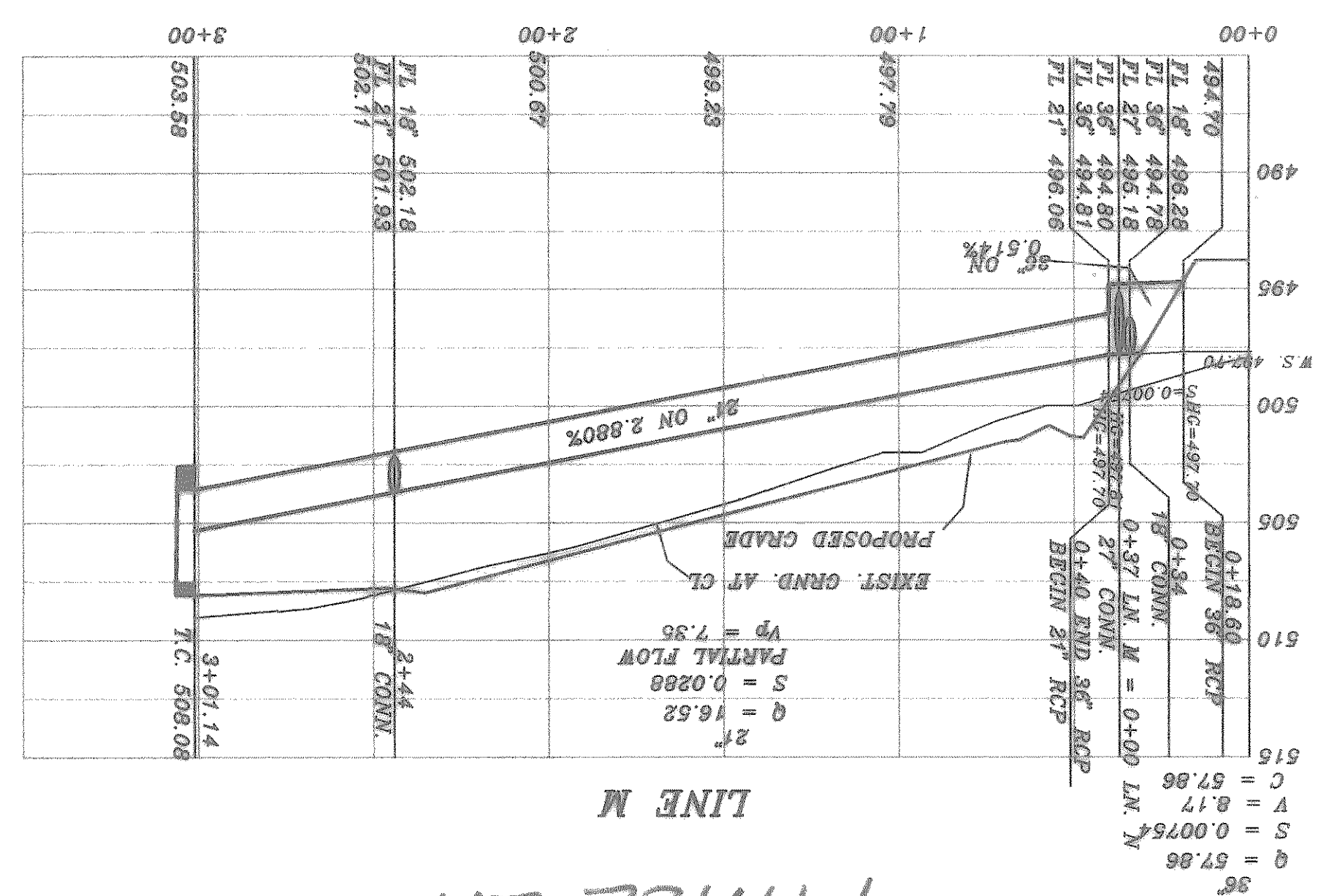
ALLEY INLET SECTION
SCALE: 1" = 4'



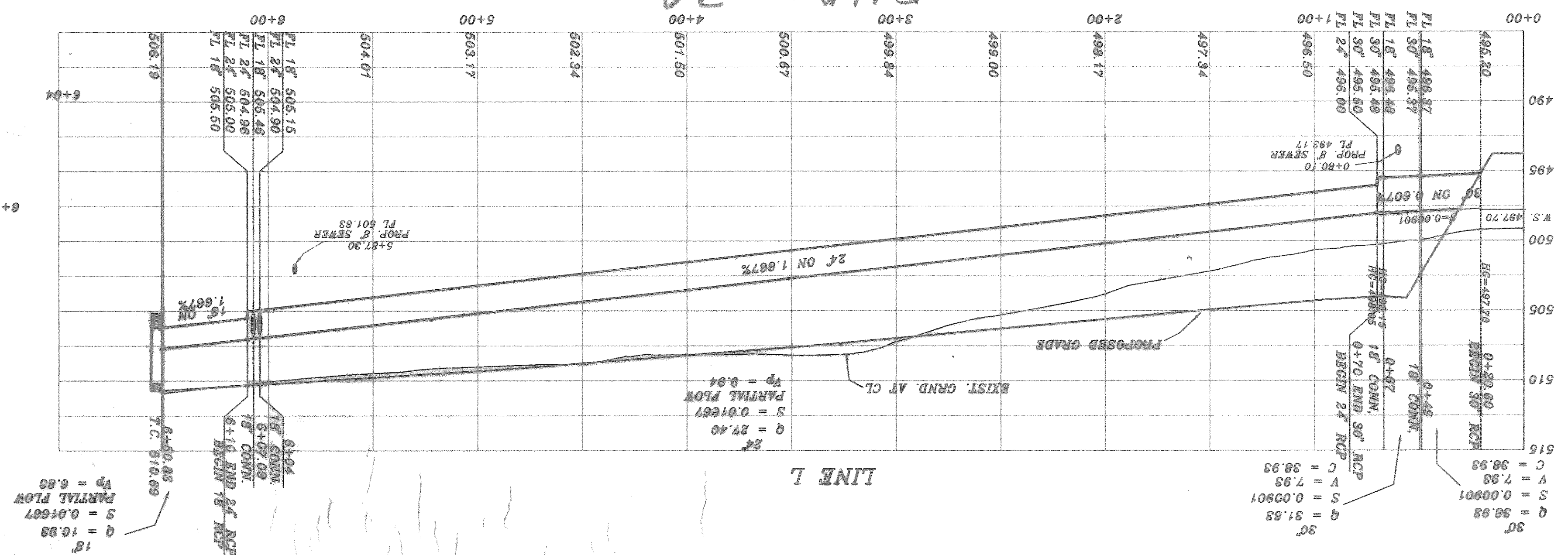
PHASE 2B



PHASE 2B



PHASE 2A



BENCH MARK SQUARE CUT IN CONCRETE AT BASE OF CONCRETE WALL AT S.W. CORNER OF 600 HALL IN 34' SOUTH APPROACH TO BRIDGE OVER SQUADBLE CREEK ON HWY. 205
ELEV.: 480.68
PAV STA: 1+63.138 RT. AUDOBON LANE
BENCH MARK 600 HALL IN 18' PEACAN TREE (TREE NO. 2314)
ELEV.: 480.68
PAV STA: 10+97.635 RT. AUDOBON LANE
BENCH MARK 600 HALL IN 18' PEACAN TREE (TREE NO. 2114)
ELEV.: 501.54
PAV STA: 10+97.635 RT. AUDOBON LANE

BENCH MARK 600 HALL IN 36' PEACAN TREE (TREE NO. 2302)
ELEV.: 486.79
PAV STA: 8+30.71 RT. MEMORIAL DRIVE
BENCH MARK 600 HALL IN 36' PEACAN TREE (TREE NO. 2114)
ELEV.: 501.54
PAV STA: 10+97.635 RT. AUDOBON LANE

