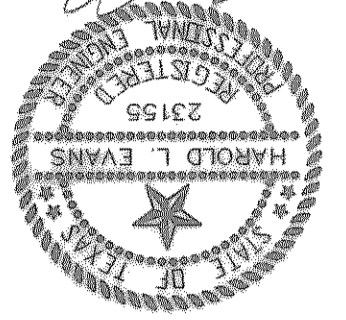


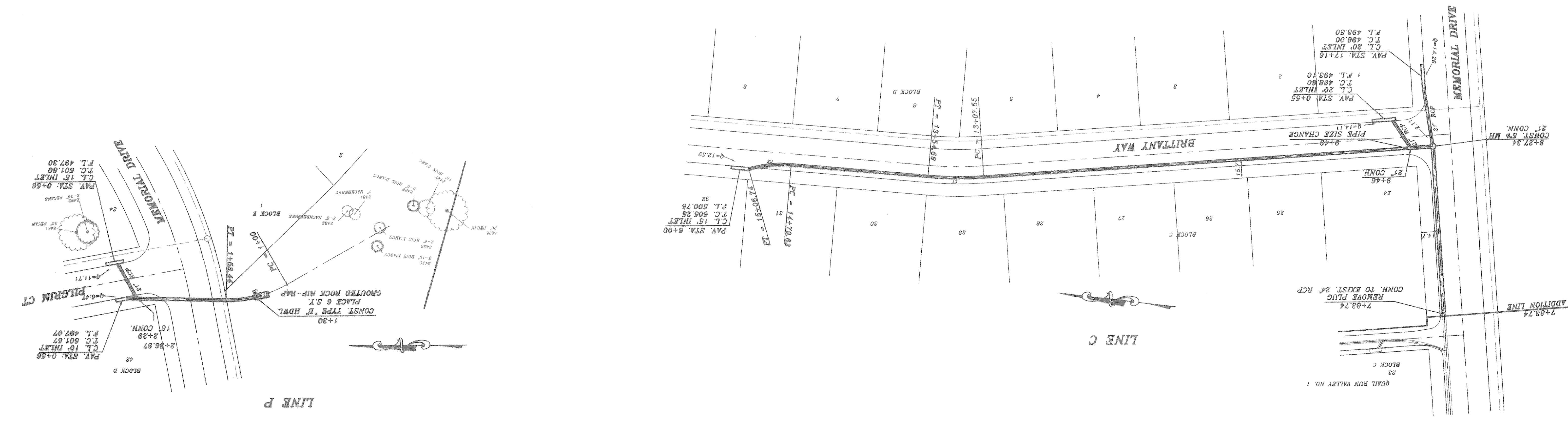
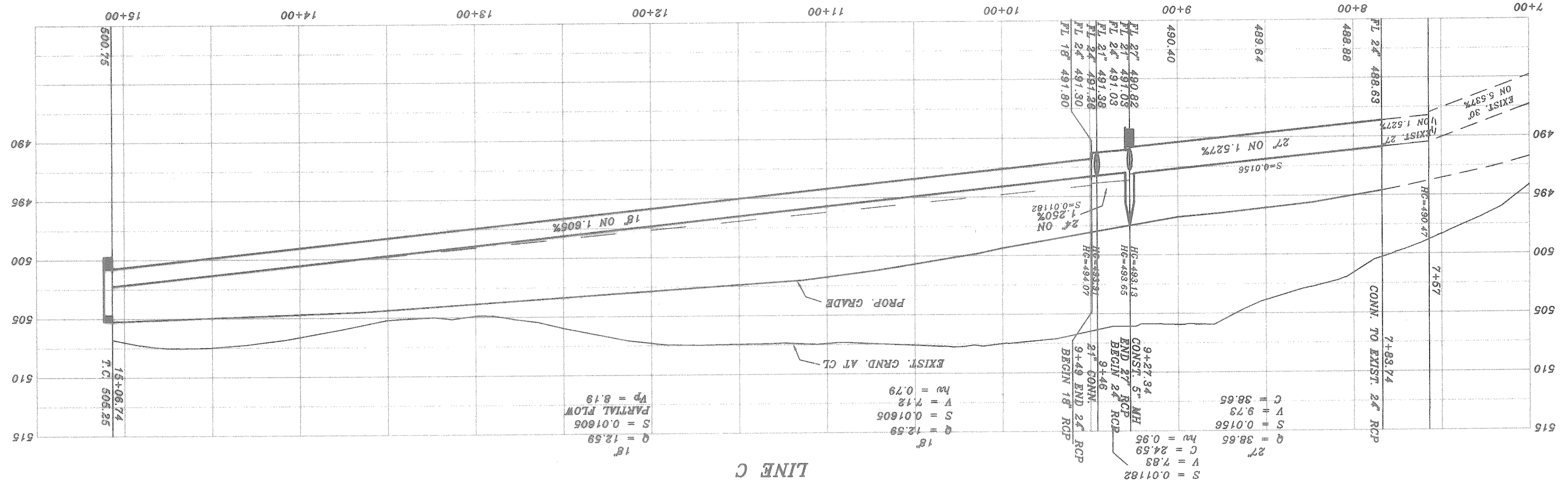
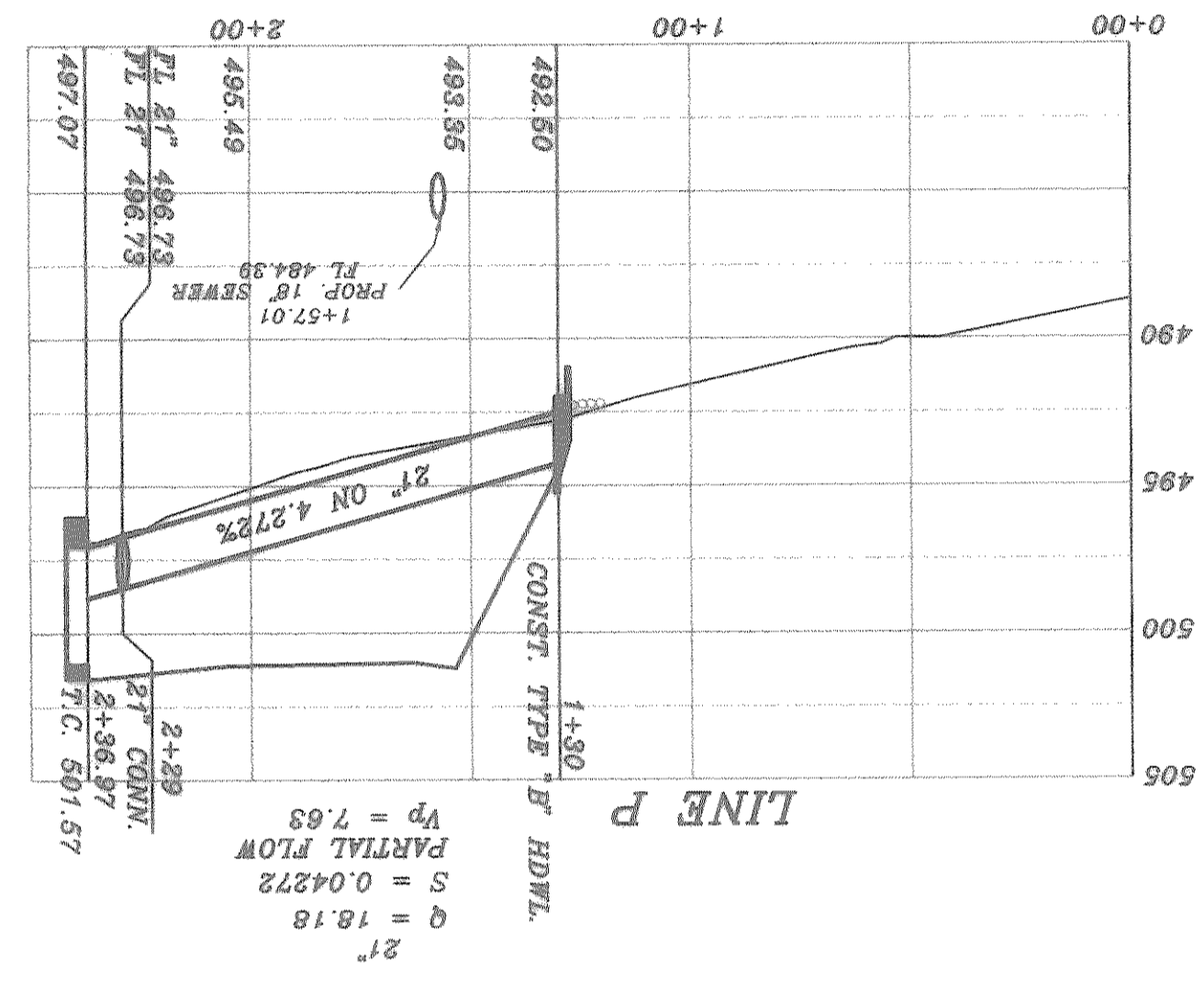
JOB NO. 0020	CITY OF ROCKWALL QUAIL RUN VALLEY NO. 2	REVISION DESCRIPTION	DATE	SCALE	H.T.E.
		REV. PER 3RD REVIEW	6/13/01	1" = 40'	
SHEET NO. 17	PROPOSED DRAINAGE LINE C AND P	REV. PER 2ND REVIEW	6/10/01	DESIGN	DRAWN
		HAROLD L. EVANS CONSULTING ENGINEER P.O. BOX 28356 2391 CUS THOMASSON ROAD, SUITE 102 DALLAS, TEXAS 75228 (214) 328-0133			



Wherein Evans & Associates, Inc. hereby states that the information has been made as per information provided by the contractor, Whitham & Associates, Inc. does not carry on the correctness or quality of construction as no field inspection was performed.
 WITNESSED AND ASSOCIATED, INC.
 DATE 9-27-02 PH 2A

PHASE 2A

BENCH MARK
 SQUARE CUT IN CONCRETE AT BASE OF CONCRETE WALL AT S.W. CORNER OF SQUABBLE CREEK ON HWY 205
 ELEV. 480.88
 PAV. STA. 1+83.138 RT. AUDOBON LANE
 60D NAIL IN 18" PECAN TREE (TREE NO. 2314)
 BENCH MARK
 ELEV. 480.88
 PAV. STA. 10+97.83 S. RT. AUDOBON LANE
 60D NAIL IN 18" PECAN TREE (TREE NO. 2114)
 BENCH MARK
 ELEV. 486.79
 PAV. STA. 8+30.71 RT. MEMORIAL DRIVE



CURVE	RADIUS	LENGTH	TANGENT	CHORD	BEARING	DELTA
C1	308.30'	47.14'	23.61'	47.09'	N89.09.01 W	08.45.55
C2	100.00'	36.11'	18.25'	36.32'	N83.53.13 E	22.41.27
C3	100.00'	33.44'	27.37'	52.81'	S14.07.48 E	30.37.09