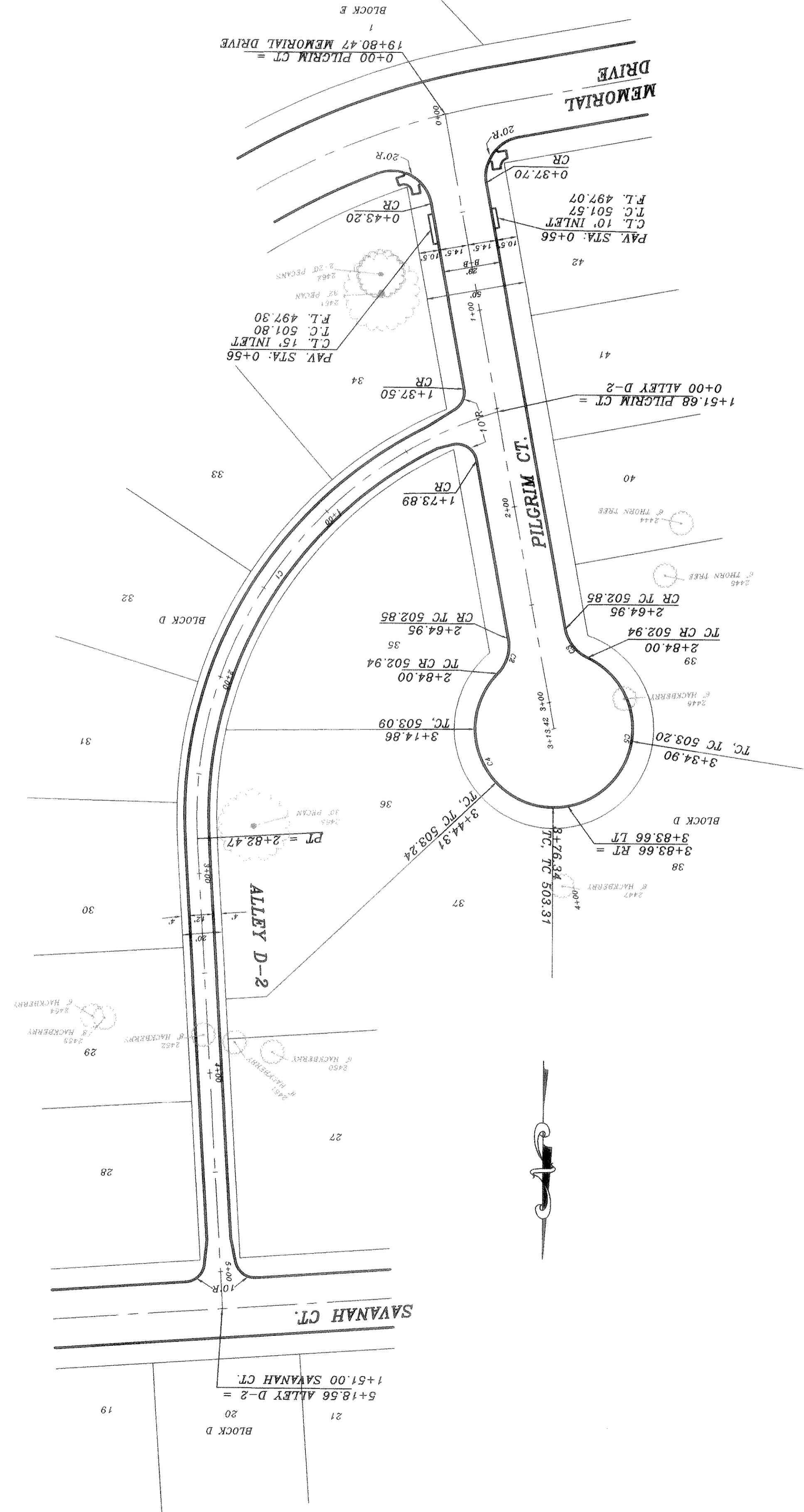
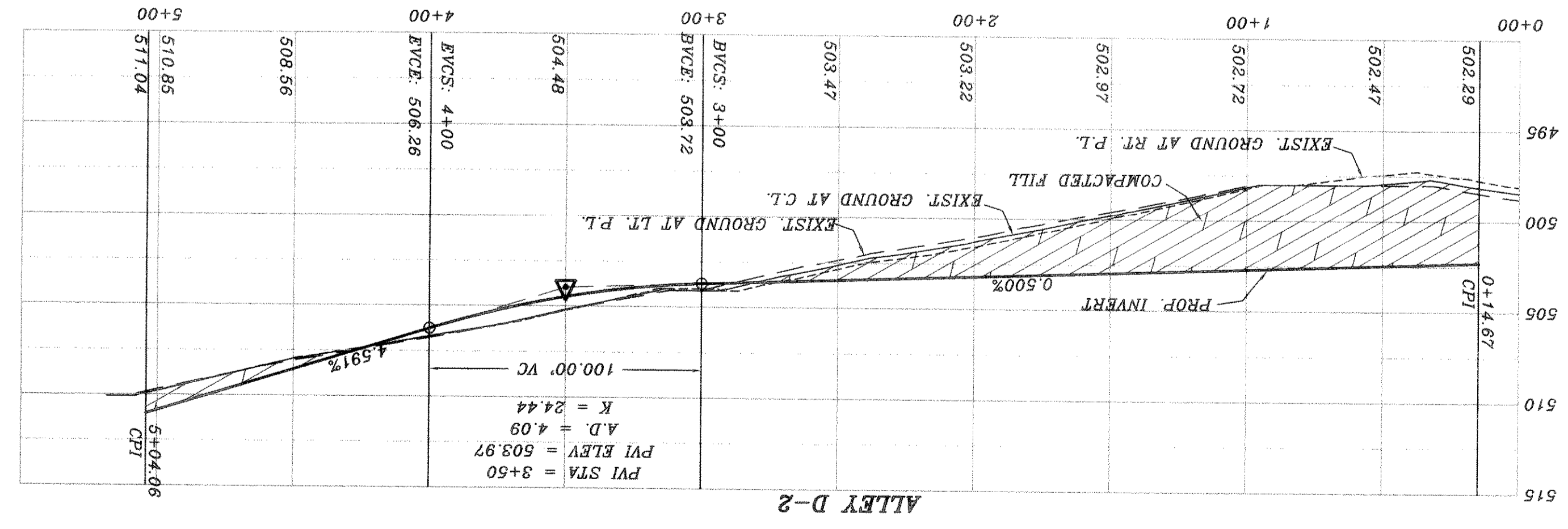
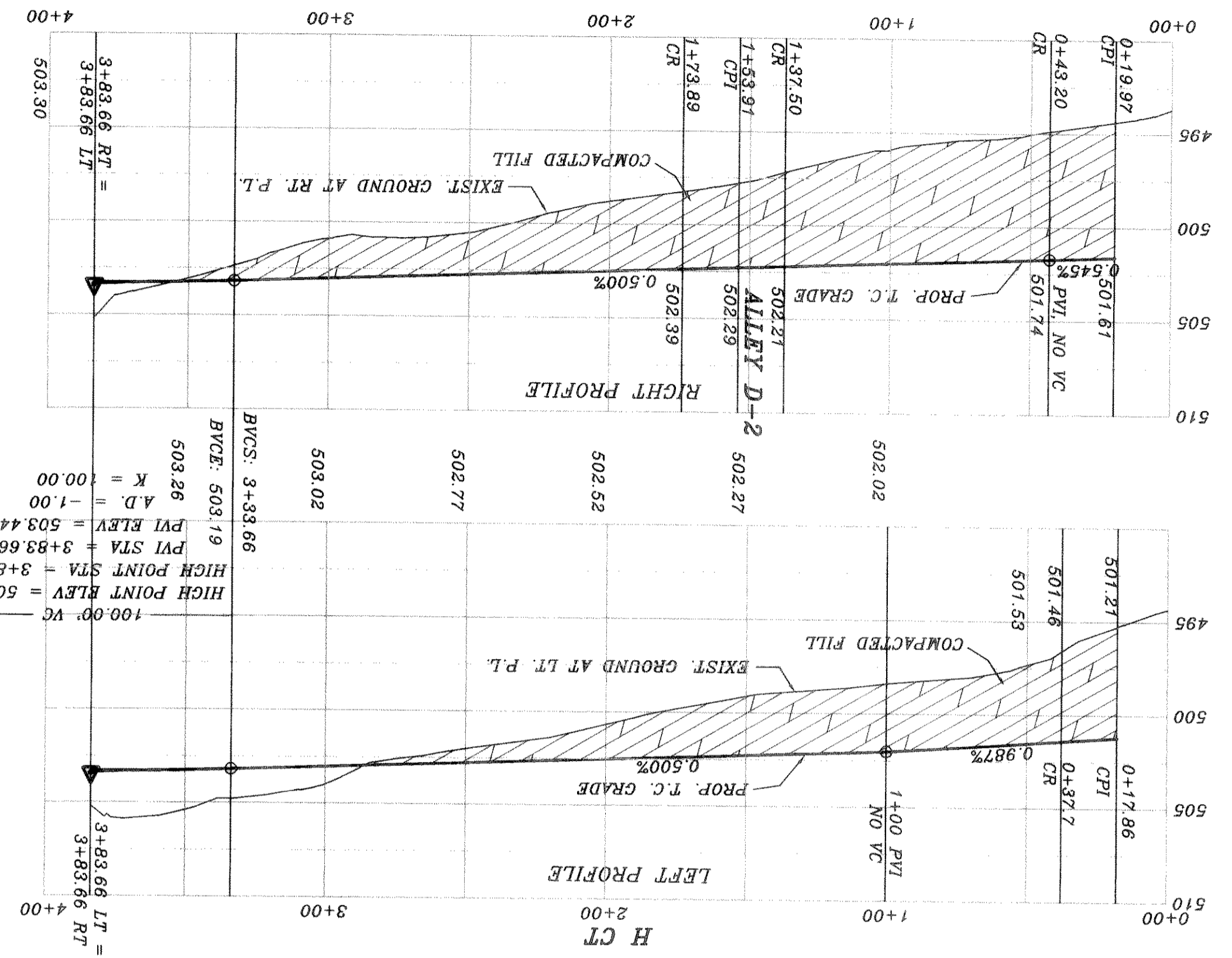


DATE	2/1/01	SCALE	DESIGN	SCALE	DESIGN
DATE	5/10/01	SCALE	DESIGN	SCALE	DESIGN
REV. PER 2ND REVIEW					
HAROLD L. EVANS CONSULTING ENGINEER P.O. BOX 28365 2931 GUS THOMASSON ROAD, SUITE 102 DALLAS, TEXAS 75228, (214) 328-8193					

CURVE	RADIUS	LENGTH	TANGENT	CHORD	BEARING	DELTA
C1	212.11'	282.11'	186.54'	282.11'	N34°38'36"E	76°11'44"
C2	20.00'	19.05'	10.31'	18.33'	S16°45'17"W	58°33'17"
C3	20.00'	19.05'	10.31'	18.33'	N37°46'49"W	64°33'47"
C4	39.60'	99.66'	123.63'	75.25'	N28°13'09"W	144°33'41"
C5	39.60'	99.66'	123.63'	75.25'	S07°13'11"W	144°33'41"

PHASE 2A



Winkelmann & Associates, Inc. hereby states that this plan, to the best of our knowledge is 'As Built' in accordance with the original approved construction specifications from the original approved construction documents. No changes have been made as per information provided by the contractor, Winkelmann & Associates, Inc. does not certify as to the correctness or quality of construction as no inspection was performed.

HAROLD L. EVANS
 CONSULTING ENGINEER
 DATE: 9-21-02
 PH 2A



BENCH MARK SQUARE CUT IN CONCRETE AT BASE OF CONCRETE WALL AT S.W. CORNER OF SOUTH APPROACH TO BRIDGE OVER SQUIBBLE CREEK ON HWY 205
 PAV. STA. 1+83.138' RT. AUDOBON LANE
 ELEV. 480.88

BENCH MARK 60D NAIL IN 3/4" PECAN TREE (TREE NO. 2314)
 PAV. STA. 1+83.138' RT. AUDOBON LANE
 ELEV. 480.88

BENCH MARK SQUABBLE CREEK ON HWY 205
 ELEV. 472.41

BENCH MARK 60D NAIL IN 1 1/8" PECAN TREE (TREE NO. 2114)
 PAV. STA. 10+97.635' RT. AUDOBON LANE
 ELEV. 501.54