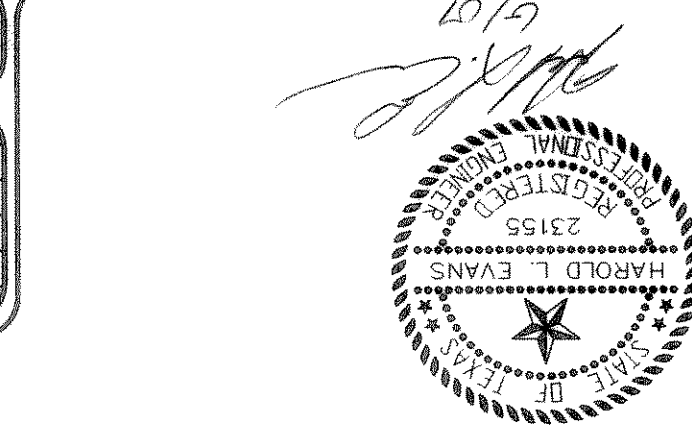
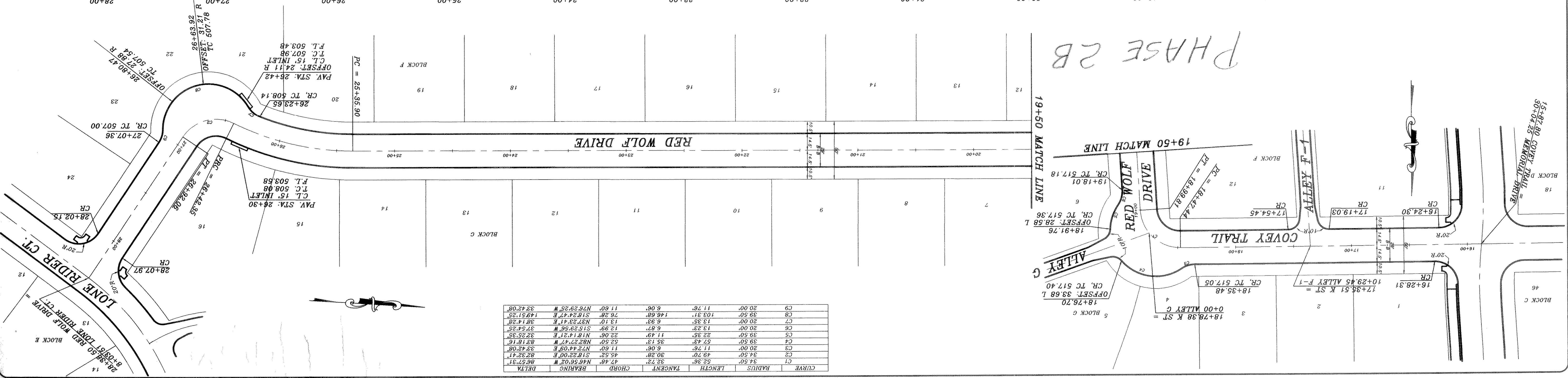
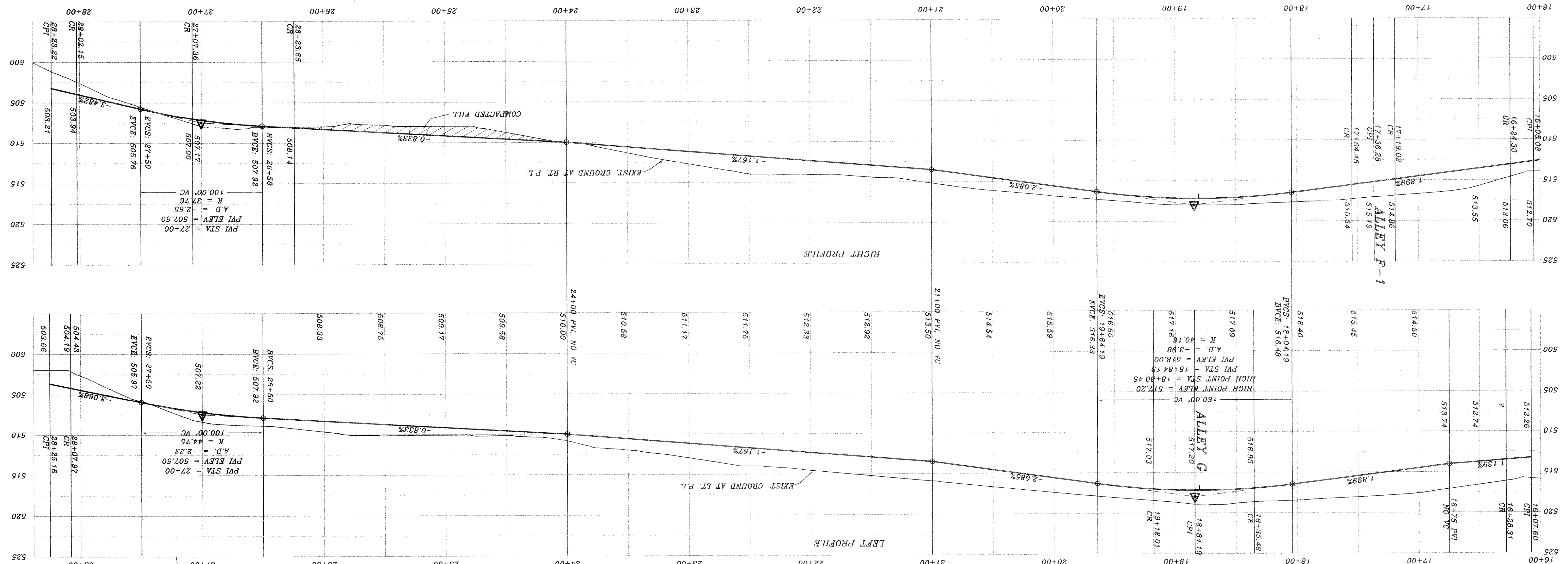


HAROLD L. EVANS
 CONSULTING ENGINEER
 P.O. BOX 28555
 2331 CUS THOMASSON ROAD, SUITE 102
 DALLAS, TEXAS 75228 (214) 328-8133

REVISION DESCRIPTION	DATE	SCALE	H.L.E.
REV PER 3RD REVIEW	6/13/01	1" = 40'	2/1/01
REV PER 2ND REVIEW	5/10/01		



BENCH MARK
 SQUARE CUT IN CONCRETE AT BASE OF
 CONCRETE WALL AT CORNER OF
 SOUTH APPROACH TO BRIDGE OVER
 SQUIBBLE CREEK ON HWY. 208
 ELEV. 472.41
 BENCH MARK
 60D NAIL IN 3" PCAN TREE (TREE NO. 2314)
 PAV. STA. 1+83.138 RT. AUDOBON LANE
 ELEV. 480.88
 BENCH MARK
 60D NAIL IN 3" PCAN TREE (TREE NO. 2302)
 PAV. STA. 8+30.71 RT. MEMORIAL DRIVE
 ELEV. 466.79
 BENCH MARK
 60D NAIL IN 1" PCAN TREE (TREE NO. 2114)
 PAV. STA. 10+97.63 S. RT. AUDOBON LANE
 ELEV. 501.54



CURVE	RADIUS	LENGTH	TANGENT	CHORD	BEARING	DELTA
C1	34.50'	47.48'	32.22'	45.36'	N46.60°W	86.57°
C2	34.50'	49.70'	30.28'	45.36'	S18.20°E	82.42°
C3	20.00'	11.78'	6.06'	11.80'	N24.40°E	32.42°
C4	39.50'	57.43'	35.13'	52.50'	N82.27°W	83.18°
C5	39.50'	57.43'	35.13'	52.50'	N181.41°E	32.55°
C6	20.00'	12.93'	6.87'	12.99'	S15.23°E	37.53°
C7	20.00'	13.35'	6.33'	13.10'	N87.33°E	38.43°
C8	39.50'	103.31'	146.66'	76.28'	S16.24°E	149.51°
C9	20.00'	11.78'	6.06'	11.80'	N76.29°E	32.42°