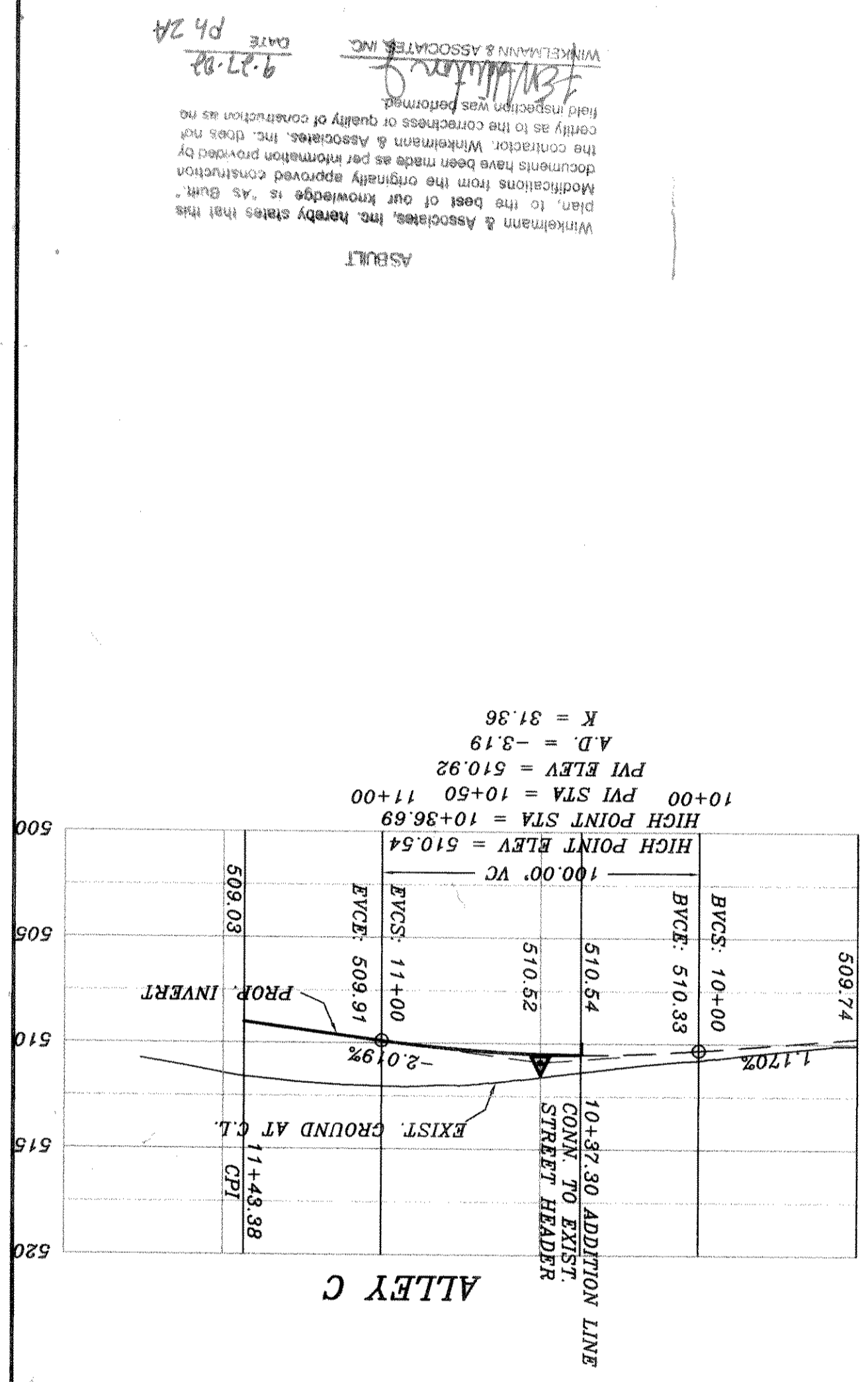
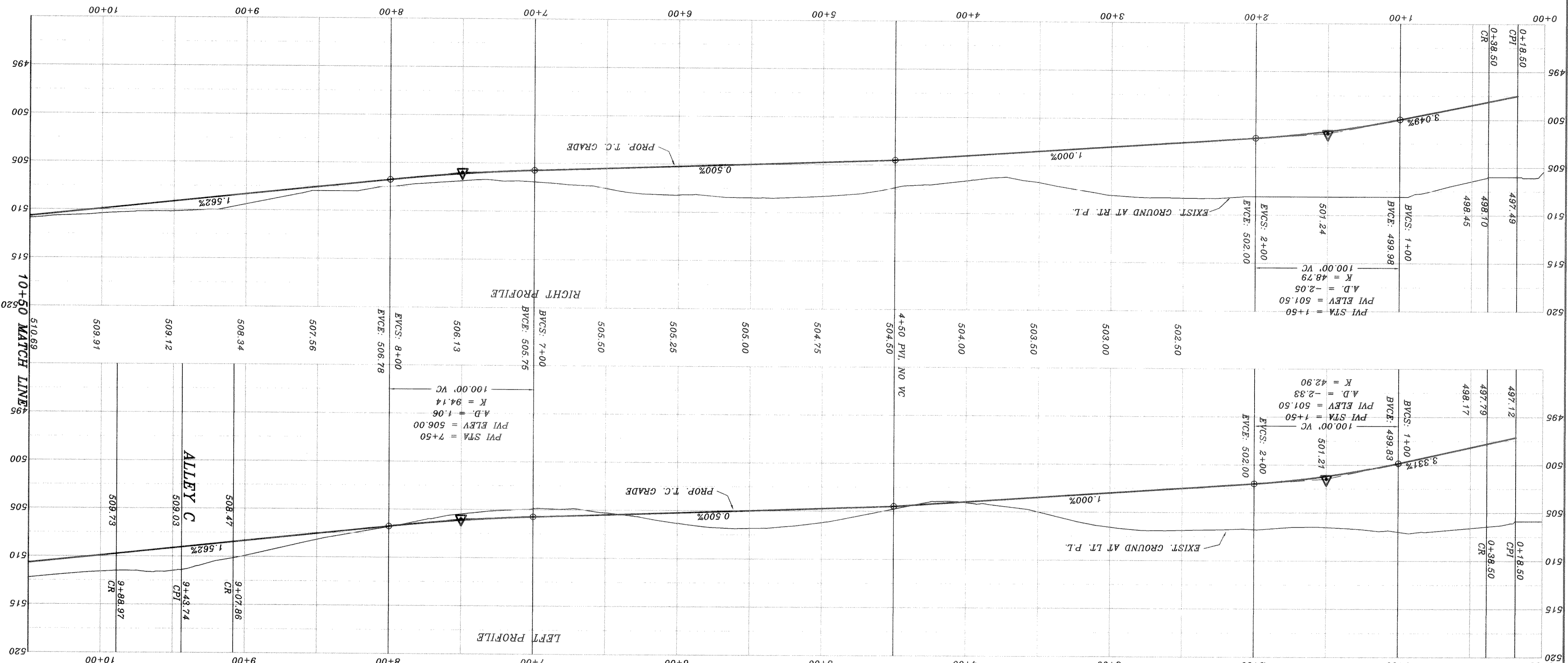


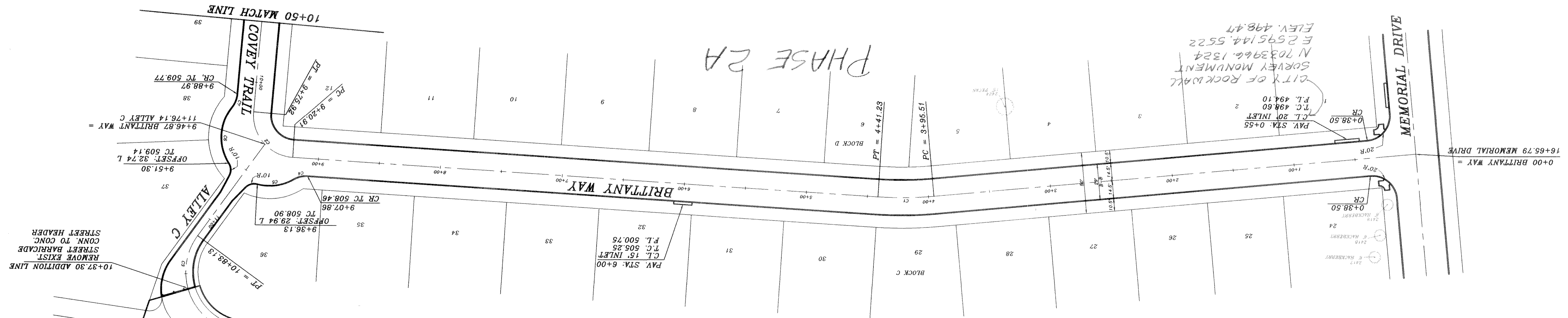
BENCH MARK
SQUARE CUT IN CONCRETE AT BASE OF
TOWER WALK AT S.W. CORNER OF
SOUTH APPROACH TO BRIDGE OVER
SQUABLE CREEK ON HWY. 205
ELEV. 472.41
BENCH MARK
60D NAIL IN 18' PECAN TREE (TREE NO. 2314)
ELEV. 480.88
PVI STA = 1+50
A.D. = -2.05
K = 48.79
100.00' VC
PVI STA = 1+50
PVI ELEV = 501.50
BENCH MARK
60D NAIL IN 36' PECAN TREE (TREE NO. 2114)
ELEV. 466.79
PVI STA = 1+30
A.D. = 3.31
K = 42.90
100.00' VC
PVI STA = 1+50
PVI ELEV = 501.50
A.D. = -2.33
K = 48.79
100.00' VC
PVI STA = 1+50
PVI ELEV = 501.50



PHASE 2A

CITY OF ROCKWALL
SOLVER MONUMENT
N 7033966.1324
E 2595144.5522
ELEV. 498.47
PAV. STA. 0+55
C.L. 20' INLET
T.C. 494.10
F.L. 494.10

CURVE	RADIUS	LENGTH	TANGENT	CHORD	BEARING	DELTA
C1	300.00'	45.72'	22.90'	45.68'	S06.08°01'E	08°43'55"
C2	34.50'	55.01'	35.38'	49.36'	S45°54'35"W	91°21'17"
C3	50.00'	45.87'	28.67'	44.24'	N85°35'38"W	52°30'59"
C4	20.00'	11.76'	6.06'	11.59'	N18°37'00"W	32°41'52"
C5	39.50'	30.82'	18.24'	30.05'	S15°06'36"E	44°42'40"
C6	39.50'	49.09'	28.28'	45.99'	S87°41'09"W	71°12'23"
C7	20.00'	11.76'	6.06'	11.60'	S73°33'43"E	33°42'08"



Whitman & Associates, Inc. hereby states that the plan to the best of our knowledge and construction documents have been made as per approved construction documents from the originally approved plan. The contractor, Whitman & Associates, Inc. does not certify as to the correctness or quality of construction as per plan including any performance.

WINKELMAN & ASSOCIATES, INC.
DATE 9-27-92 PH 2A