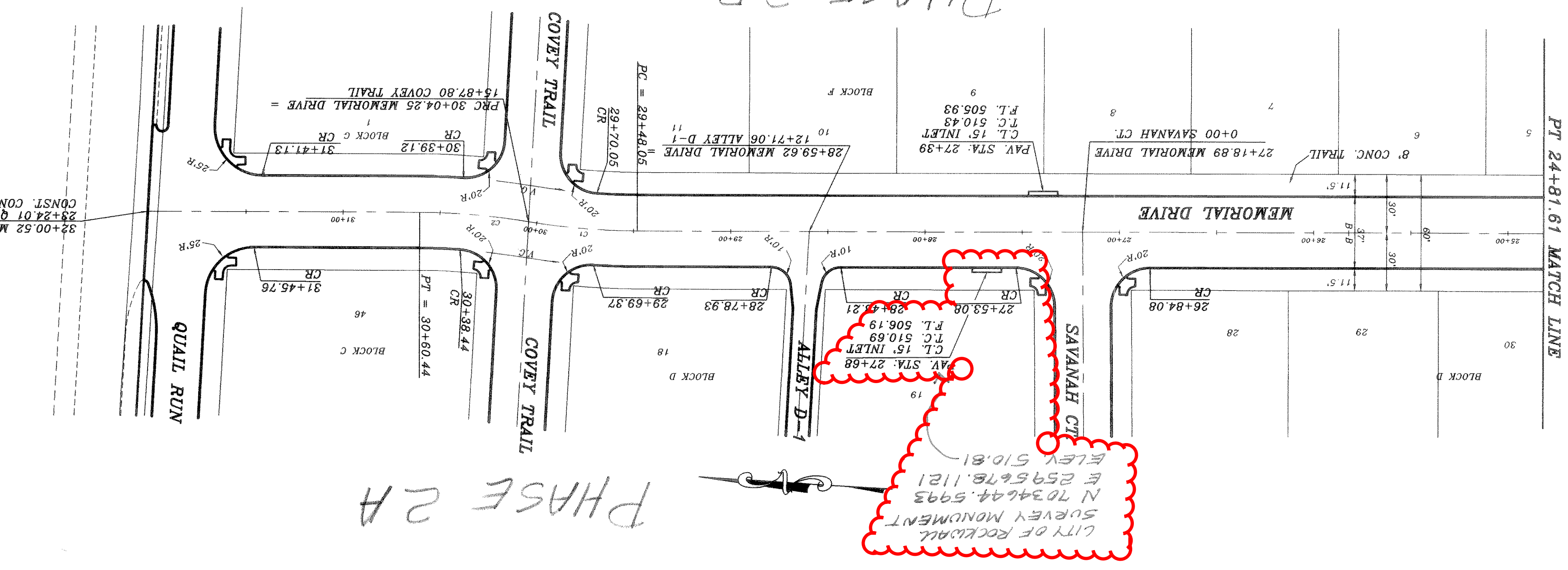
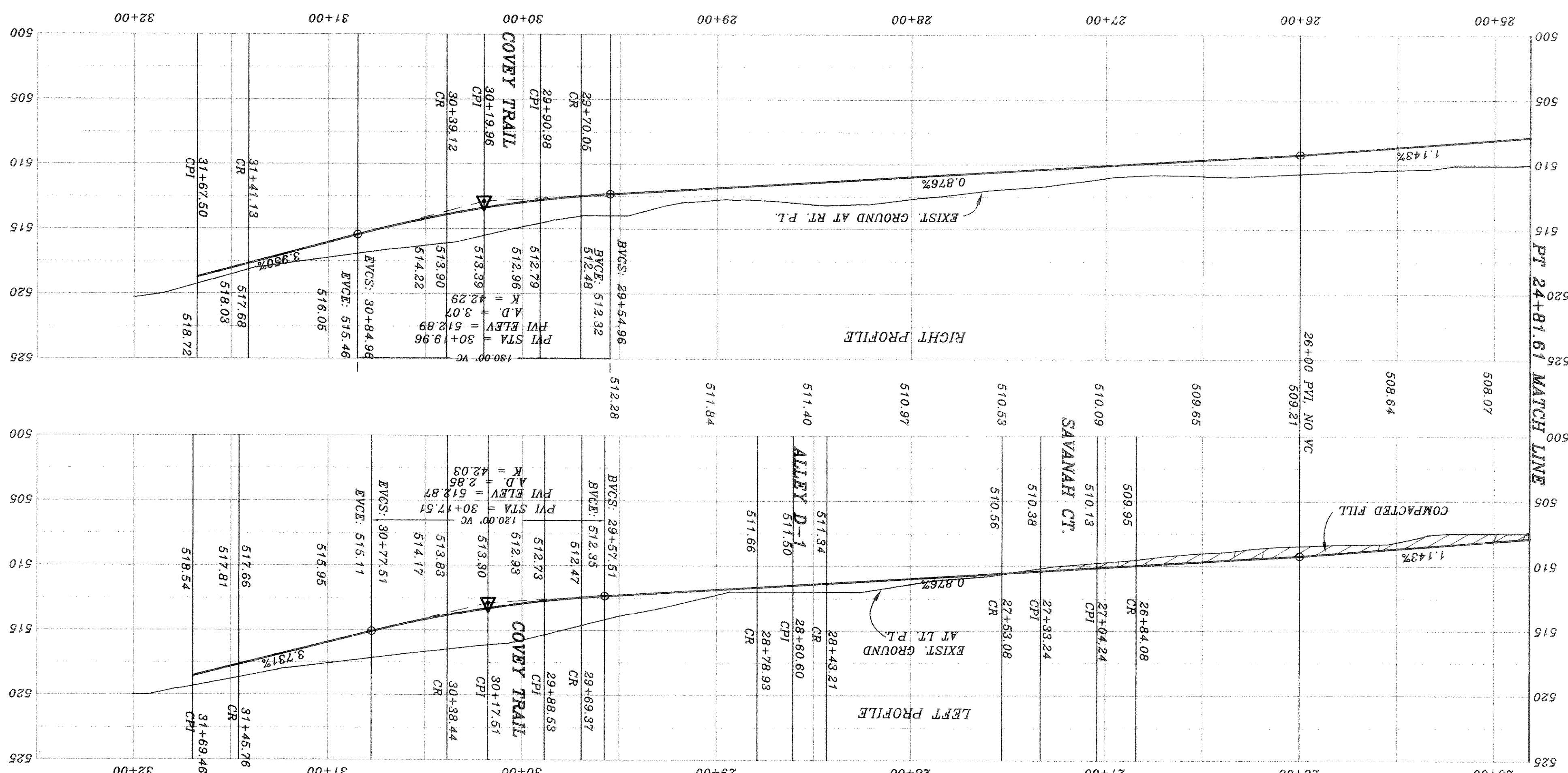


| | | | | | |
|---|------------------------|--|----------------|--------------------------|----------------------|
| JOB NO. 0020 | CITY OF ROCKWALL | | DATE 2/1/01 | SCALE 1" = 40' | REVISION DESCRIPTION |
| | QUAIL RUN VALLEY NO. 2 | | | | |
| SHEET NO. 24 | MEMORIAL DRIVE | | 2/25/01 | DRAWN | REV. PER CITY REVIEW |
| | PROPOSED PAVING | | | | 5/10/01 |
| HAROLD L. EVANS CONSULTING ENGINEER P.O. BOX 28355 DALLAS, TEXAS 75228, (214) 328-8193 | | | 11/25/01 | REV. PER 3RD CITY REVIEW | REV. |

BENCH MARK
SQUARE CUT IN CONCRETE AT BASE OF
CONCRETE WALL AT S.W. CORNER OF
SOUTH APPROACH TO BRIDGE OVER
SQUIABLE CREEK ON HWY. 305
ELEV. 472.41
BENCH MARK
GOD MALL IN 3rd PECAN TREE (TREE NO. 2314)
PAV. STA. 1+83.138 RT. AUDOBON LANE
ELEV. 480.88
BENCH MARK
GOD MALL IN 18th PECAN TREE (TREE NO. 2114)
PAV. STA. 10+97.635 RT. AUDOBON LANE
ELEV. 501.54



| CURVE | RADIUS | LENGTH | TANGENT | CHORD | BEARING | DELTA |
|-------|---------|--------|---------|--------|--------------|------------|
| C2 | 350.00' | 56.20' | 28.16' | 56.14' | S01°08'43" W | 091°11'59" |
| C1 | 350.00' | 56.20' | 28.16' | 56.14' | N07°08'43" E | 091°11'59" |



Wikekamm & Associates, Inc. hereby states that this plan, to the best of our knowledge as a Built-up plan, is a true and correct representation of the original approved construction documents. We warrant that the information provided by the contractor, Wikekamm & Associates, Inc. does not contain any errors or omissions and that the design was prepared in accordance with the contract and the specifications of construction as set forth in the contract documents.

DATE: 9-27-02
PH 2A