

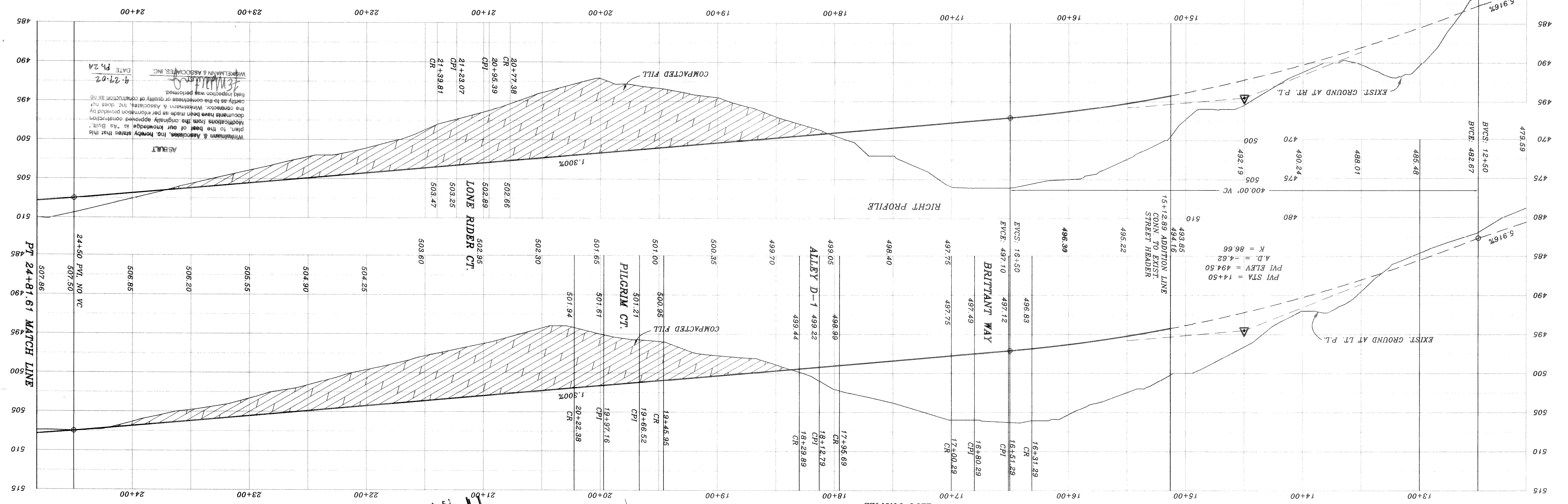
REV	DATE	DESCRIPTION
11/24/01	2/1/00	REV PER 3RD CITY REVIEW
6/13/01	2/1/00	REV PER 2ND CITY REVIEW
5/10/01	2/1/00	REV PER CITY REVIEW
2/24/01	2/1/00	SCALE
		DATE
		SCALE
		H.L.E.



BENCH MARK  
600 MAIL IN 34' PECAN TREE (TREE NO. 2314)  
PAV. STA. 1+83.138 RT. AUDOBON LANE  
ELEV. 480.88

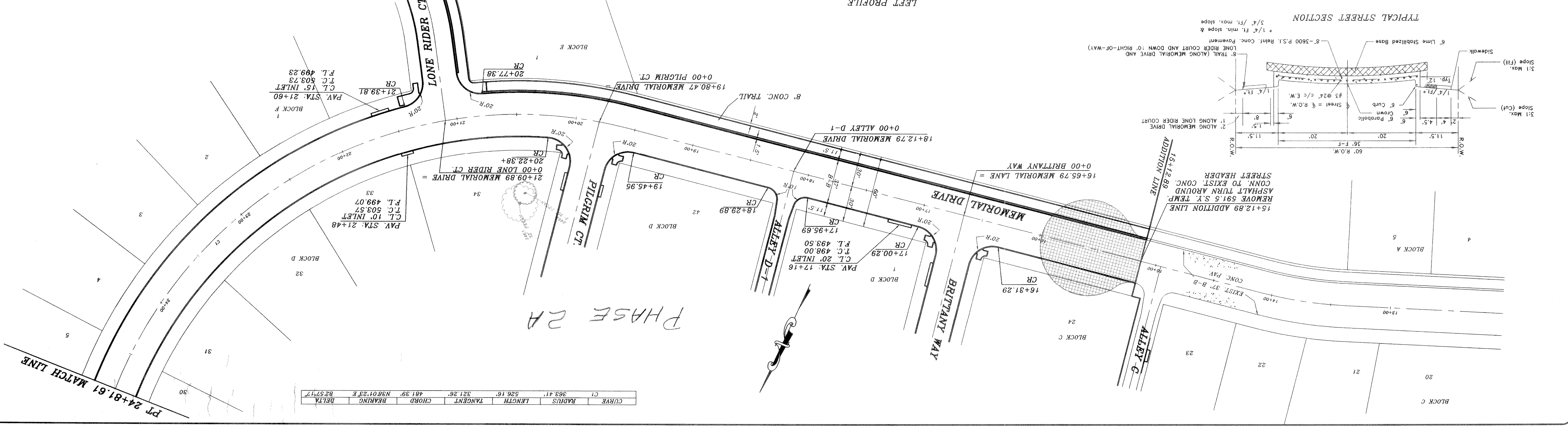
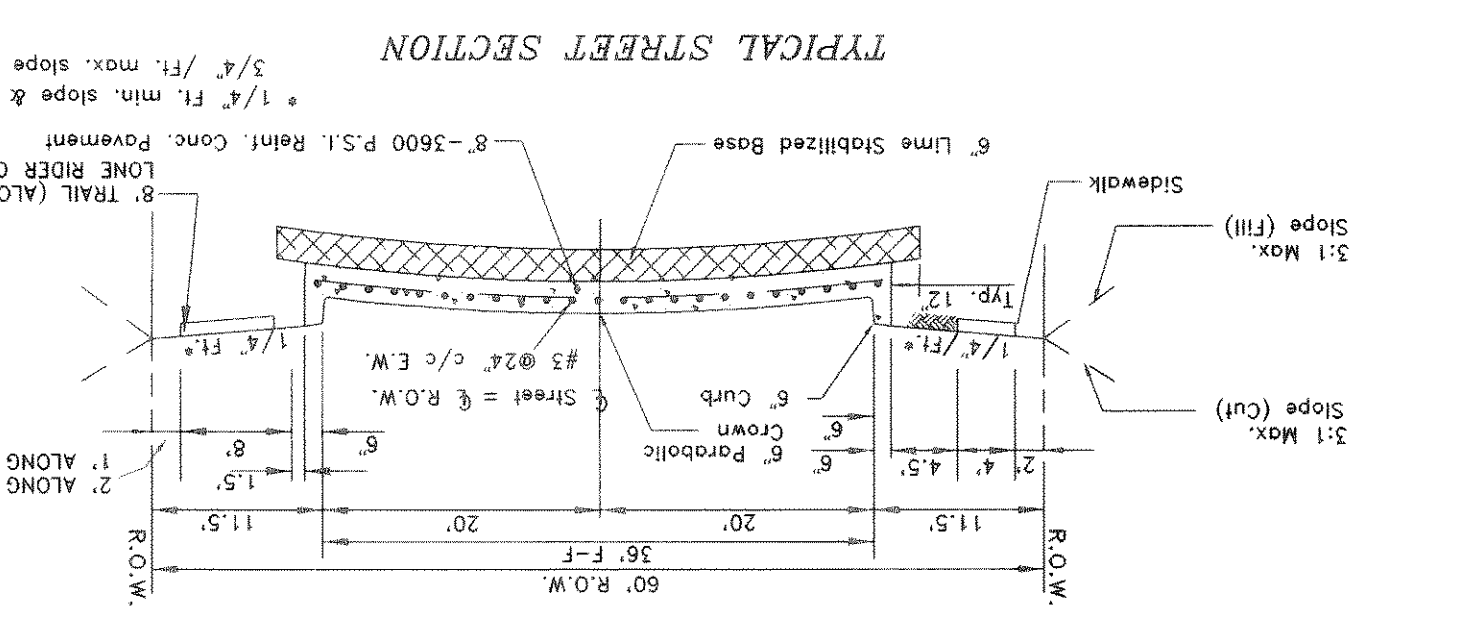
BENCH MARK  
600 MAIL IN 36' PECAN TREE (TREE NO. 2302)  
PAV. STA. 8+30.211 RT. MEMORIAL DRIVE  
ELEV. 466.79

BENCH MARK  
600 MAIL IN 18' PECAN TREE (TREE NO. 2114)  
PAV. STA. 10+97.635 RT. AUDOBON LANE  
ELEV. 472.41



Witherburn & Associates, Inc. hereby states that this plan, to the best of our knowledge as an Engineer, conforms to the original approved construction documents. Witherburn & Associates, Inc. does not certify as to the correctness or quality of construction as the field inspection was performed.

WITHERBURN & ASSOCIATES, INC.  
DATE: 4-27-02  
PH: 2A



CURVE	RADIUS	LENGTH	TANGENT	CHORD	BEARING	DELTA
C1	363.41'	526.16'	321.26'	481.39'	N89.01°35'E	B25°17'