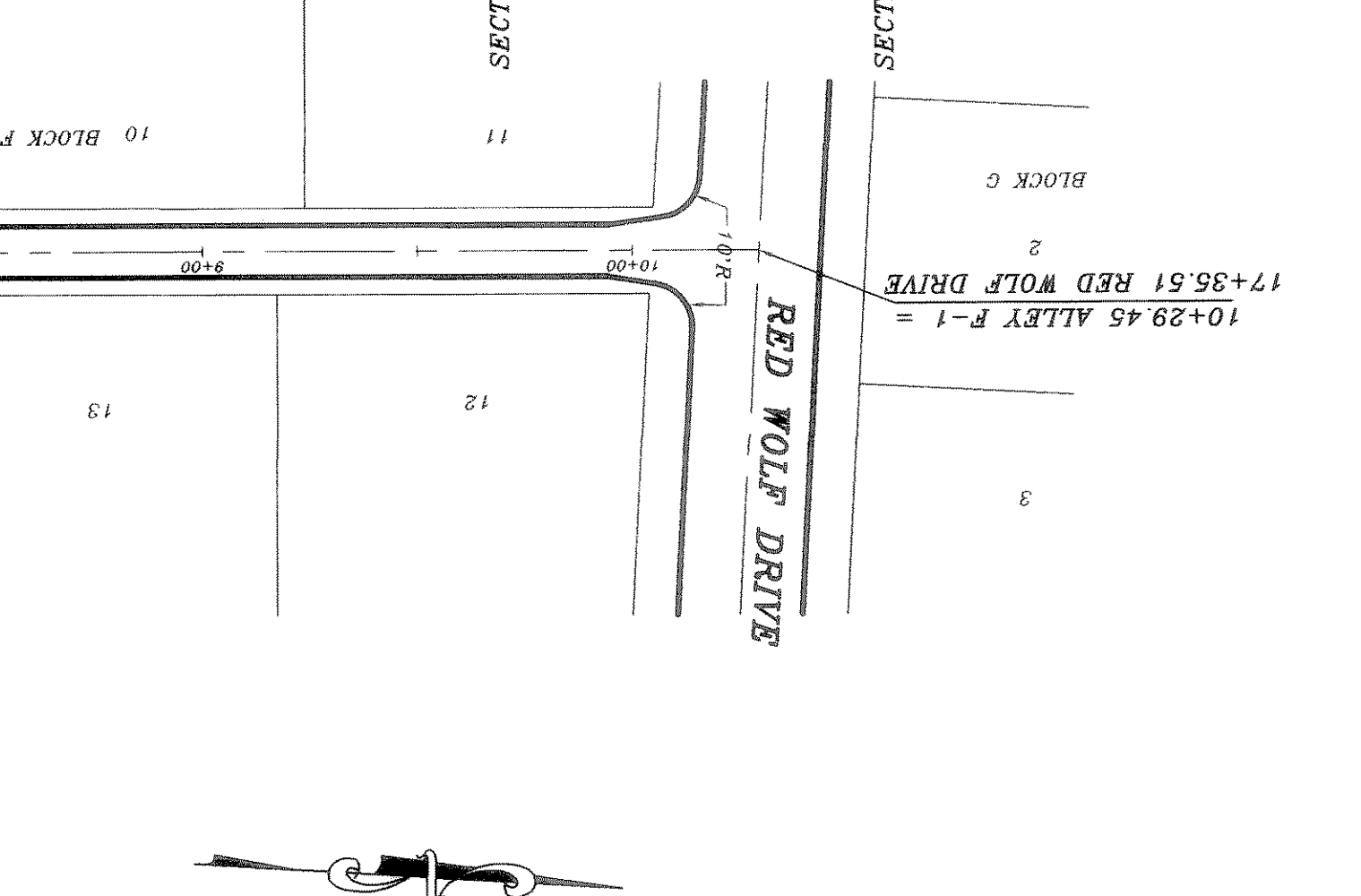
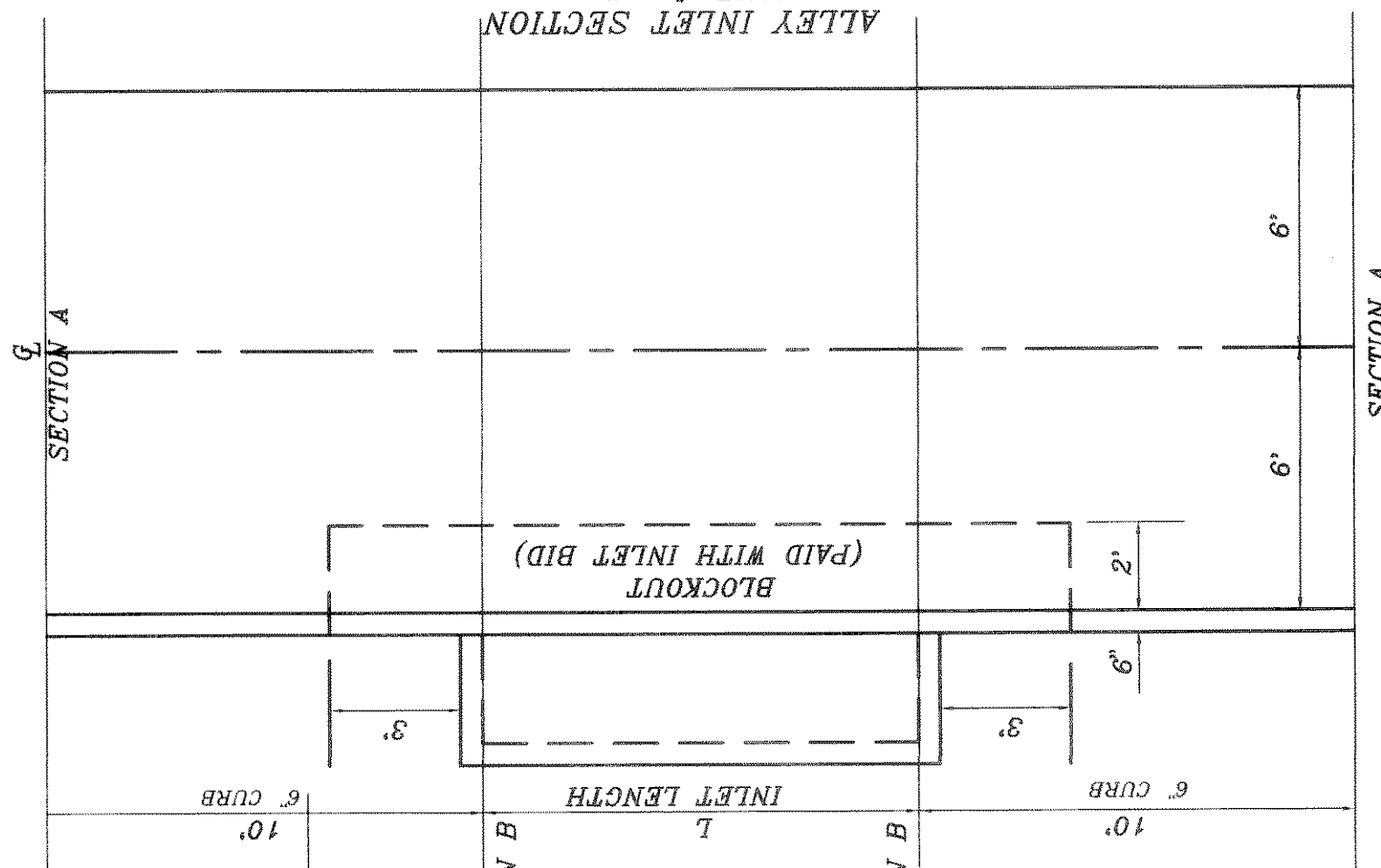
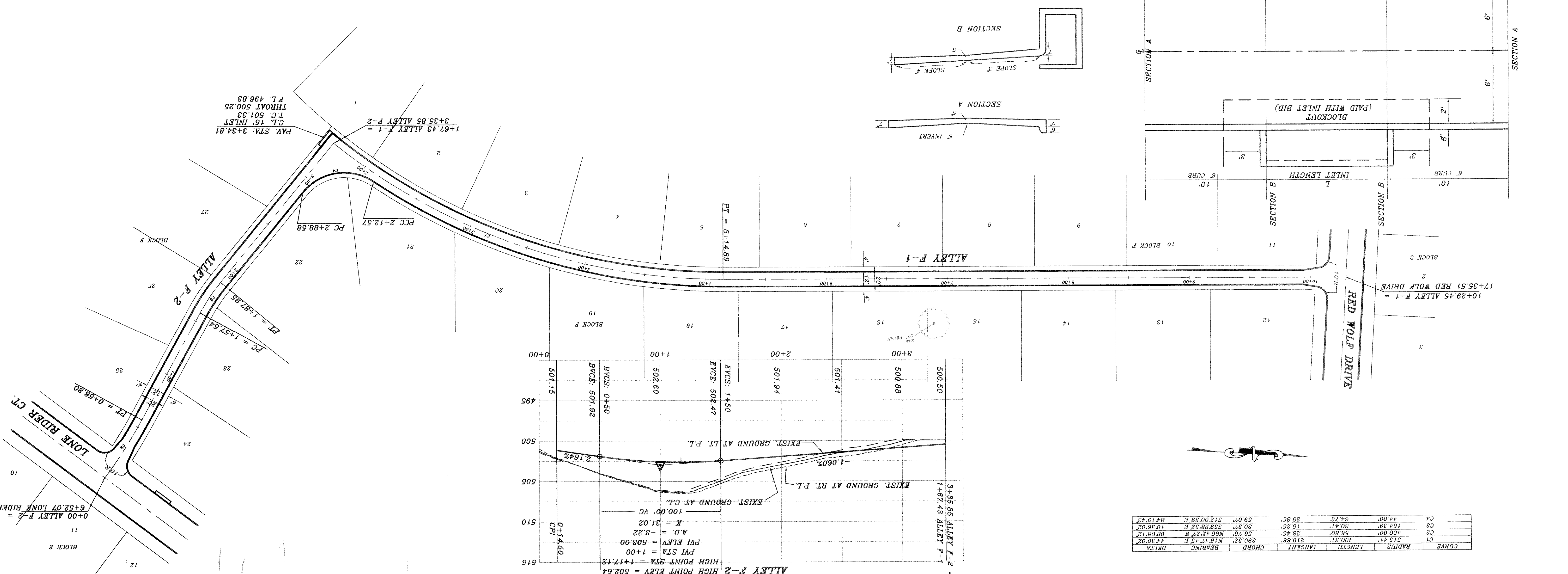
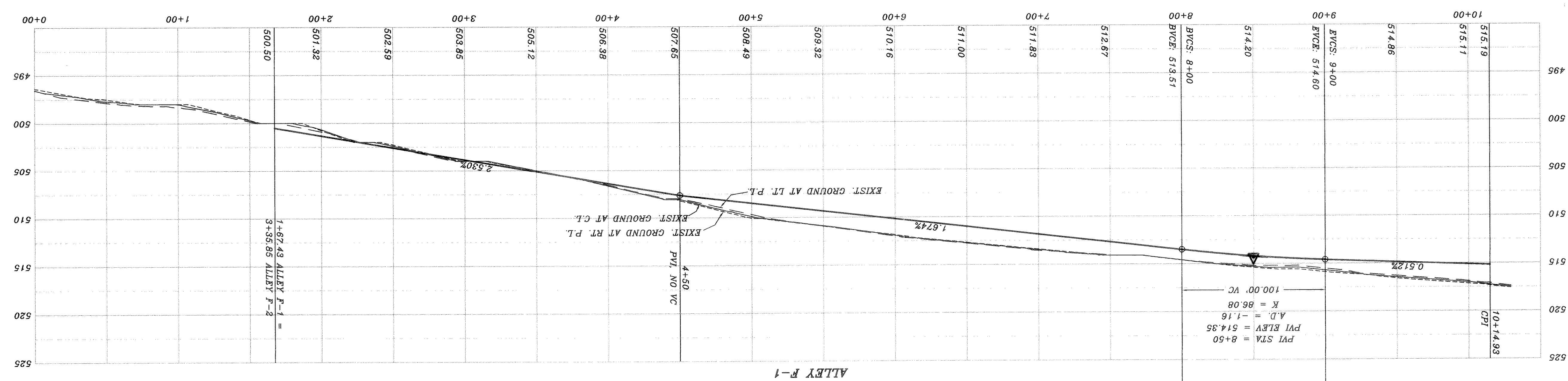


REVISION DESCRIPTION	DATE	SCALE	H.T.E.	DRAWN
REV. PER 4th REVIEW	7/12/01	1" = 40'		
REV. PER 2nd REVIEW	5/10/01			

HAROLD L. EVANS
 CONSULTING ENGINEER
 P. O. BOX 28355
 2201 CUS THOMASSON ROAD, SUITE 102
 DALLAS, TEXAS 75228 (214) 328-8133

PHASE 2B

BENCH MARK
 SQUARE CUT IN CONCRETE AT BASE OF
 CONCRETE MAIL AT S.E. CORNER OF
 SOUTH APPROACH TO BRIDGE OVER
 SQUABBLE CREEK ON HWY. 205
 ELEV: 472.41
 BENCH MARK
 GOD MALL IN 34' PECAN TREE (TREE NO. 2314)
 PAY STA 1+83.138 RT. AUDOBON LANE
 ELEV: 480.88
 BENCH MARK
 GOD MALL IN 18' PECAN TREE (TREE NO. 2114)
 PAY STA 10+97.635 RT. AUDOBON LANE
 ELEV: 501.54



CURVE	LENGTH	RADIUS	TANGENT	CHORD	BEARING	DELTA
C1	51.54'	400.31'	210.86'	390.32'	N18°17'45"E	44°30'02"
C2	100.00'	56.80'	28.45'	N60°42'27"W	08°08'12"	
C3	164.39'	30.41'	15.25'	S59°28'32"E	10°36'02"	
C4	44.00'	64.76'	39.85'	S12°00'39"E	84°19'43"	