

DATE	2/1/00	SCALE	1" = 50'
DESIGN	HAROLD L. EVANS	DRAWN	H.L.E.
REV. PER 3rd CITY REVIEW	11/25/01	REV. PER 2nd CITY REVIEW	6/12/01
REV. PER 2nd CITY REVIEW	6/23/01	DATE	2/1/00
REV. PER 3rd CITY REVIEW	6/23/01	SCALE	1" = 50'
REV. PER 2nd CITY REVIEW	6/12/01	DESIGN	HAROLD L. EVANS
REV. PER 3rd CITY REVIEW	11/25/01	DRAWN	H.L.E.

**REVISION DESCRIPTION**

0000 PHASE 0000000000

CONTRACTOR SHALL VERIFY THE LOCATION OF THE HIDDEN WATER LINE FROM TO EXISTING AND CONSTRUCTION OF THE HIDDEN WATER LINE SHALL BE PERFORMED SO THAT CONDUITS OR IMPROVEMENTS TO INSTALL PROPOSED PIPES TO INSTANT PROPOSED EXCAVATION ADJACENT TO NTRWD POINTS ACROSS NTRWD EASEMENTS, AS APPROVED BY THE NTRWD. THE CROSSINGS SHALL BE DESIGNATED AND VERTICALLY TO PROVIDE A MINIMUM OF FIVE FEET OF COVER.

**NOTE: SEE NTRWD NOTES ON COVER SHEET**

OPERATION OF heavy earthmoving equipment, compactation equipment or heavy construction equipment, such as concrete trucks, shall be restricted to specific crossing points across NTRWD easements, as approved by the NTRWD. The crossings shall be designated and vertically to provide a minimum of five feet of cover.

C. To assure that the placement of significant loads over the NTRWD pipeline does not damage the existing pipeline, no materials shall be stockpiled on the NTRWD easement without authorization from the NTRWD. If the contractor desires to use NTRWD easement for stockpiles of materials, contact NTRWD Engineering at 972-442-5405 so your plans for use NTRWD's easement can be reviewed.

D. In areas where the cover between the top of NTRWD pipeline and the bottom of the sub-grade is three (3) feet or less, it is requested that the sub-grade preparation be deleted and a thickened pavement section be used to limit construction activities over the pipeline.

E. Crossing of the NTRWD easement with other utilities, such as TV cable, phone, gas, and electric, shall be coordinated with the NTRWD to avoid damage to the NTRWD facilities.

F. Outdoor lighting, landscaping screening walls or other facilities shall not be installed in NTRWD easements without written approval of the NTRWD.

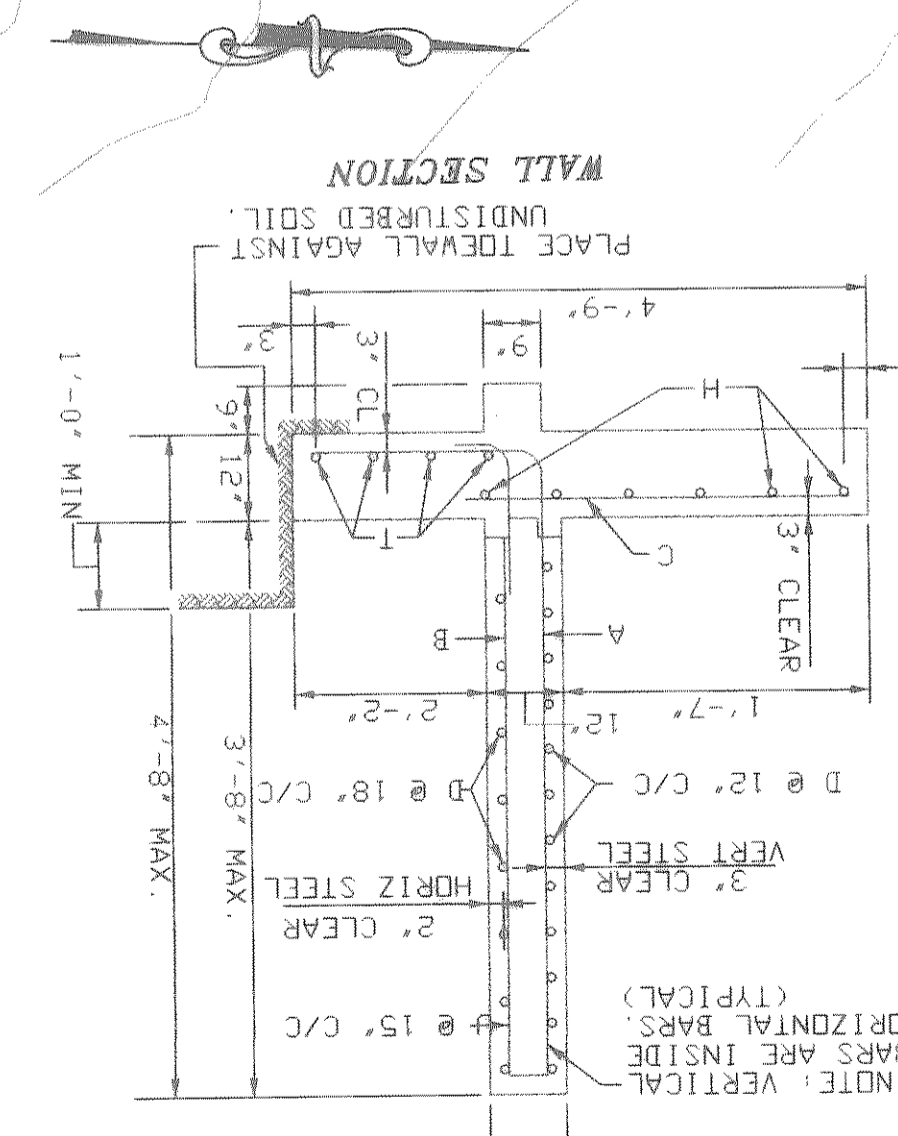
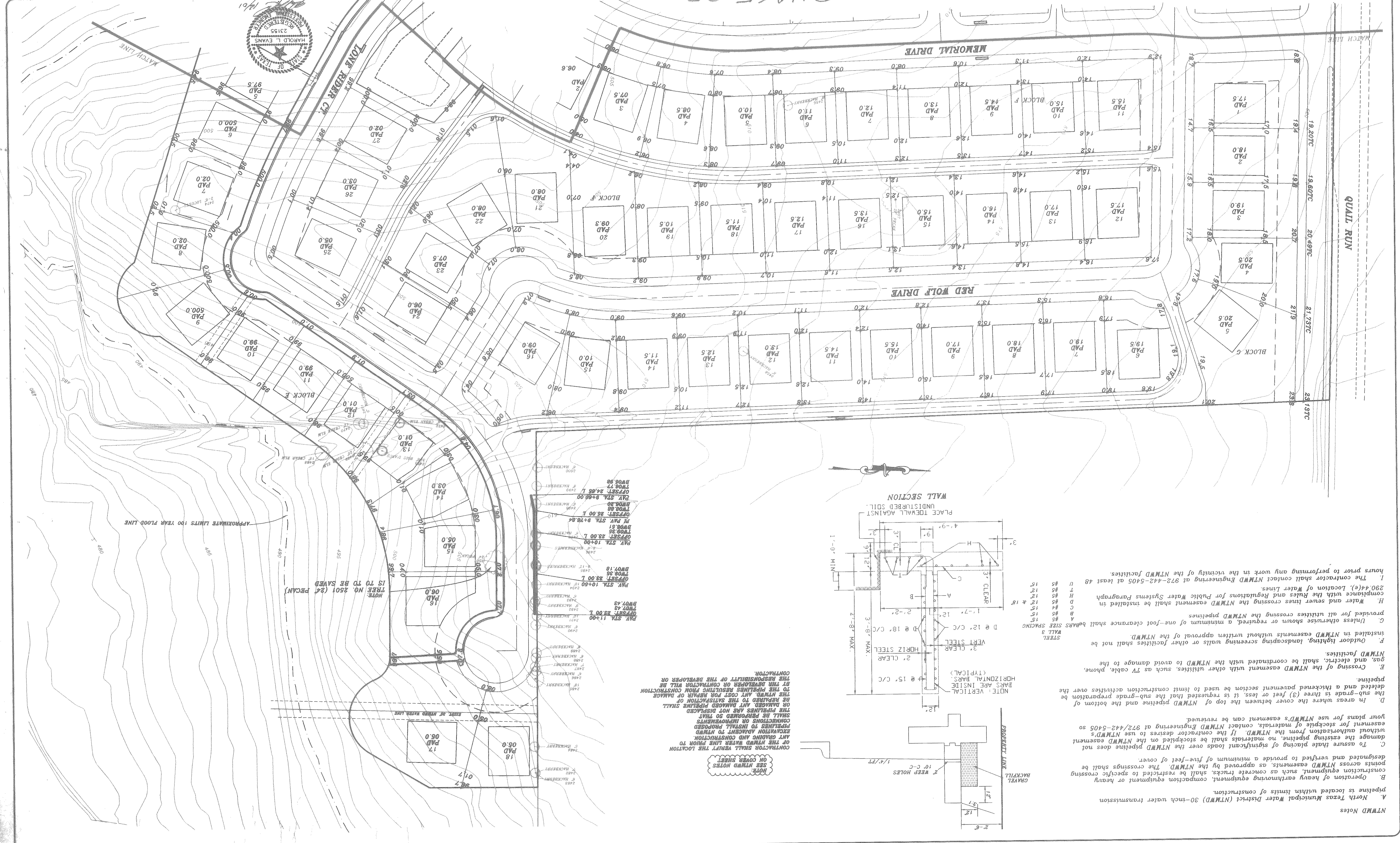
G. Unless otherwise shown or required, a minimum of one-foot clearance shall be provided for all utilities crossing the NTRWD pipelines.

H. Water and sewer lines crossing the NTRWD easement shall be installed in compliance with the Rules and Regulations for Public Water Systems Paragraph 290.44(e), Location of Water Lines.

I. The contractor shall contact NTRWD Engineering at 972-442-5405 at least 48 hours prior to performing any work in the vicinity of the NTRWD facilities.

**NTRWD Notes**

A. North Texas Municipal Water District (NTRWD) 30-inch water transmission pipelines is located within limits of construction.



- A. North Texas Municipal Water District (NTRWD) 30-inch water transmission pipelines is located within limits of construction.
- B. Operation of heavy earthmoving equipment, compactation equipment or heavy construction equipment, such as concrete trucks, shall be restricted to specific crossing points across NTRWD easements, as approved by the NTRWD. The crossings shall be designated and vertically to provide a minimum of five feet of cover.
- C. To assure that the placement of significant loads over the NTRWD pipeline does not damage the existing pipeline, no materials shall be stockpiled on the NTRWD easement without authorization from the NTRWD. If the contractor desires to use NTRWD's easement for stockpiles of materials, contact NTRWD Engineering at 972-442-5405 so your plans for use NTRWD's easement can be reviewed.
- D. In areas where the cover between the top of NTRWD pipeline and the bottom of the sub-grade is three (3) feet or less, it is requested that the sub-grade preparation be deleted and a thickened pavement section be used to limit construction activities over the pipeline.
- E. Crossing of the NTRWD easement with other utilities, such as TV cable, phone, gas, and electric, shall be coordinated with the NTRWD to avoid damage to the NTRWD facilities.
- F. Outdoor lighting, landscaping screening walls or other facilities shall not be installed in NTRWD easements without written approval of the NTRWD.
- G. Unless otherwise shown or required, a minimum of one-foot clearance shall be provided for all utilities crossing the NTRWD pipelines.
- H. Water and sewer lines crossing the NTRWD easement shall be installed in compliance with the Rules and Regulations for Public Water Systems Paragraph 290.44(e), Location of Water Lines.
- I. The contractor shall contact NTRWD Engineering at 972-442-5405 at least 48 hours prior to performing any work in the vicinity of the NTRWD facilities.

**NOTE: SEE NTRWD NOTES ON COVER SHEET**

CONTRACTOR SHALL VERIFY THE LOCATION OF THE HIDDEN WATER LINE FROM TO EXISTING AND CONSTRUCTION OF THE HIDDEN WATER LINE SHALL BE PERFORMED SO THAT CONDUITS OR IMPROVEMENTS TO INSTALL PROPOSED PIPES TO INSTANT PROPOSED EXCAVATION ADJACENT TO NTRWD POINTS ACROSS NTRWD EASEMENTS, AS APPROVED BY THE NTRWD. THE CROSSINGS SHALL BE DESIGNATED AND VERTICALLY TO PROVIDE A MINIMUM OF FIVE FEET OF COVER.

PAV. STA. 11+00	11+00	11+00	11+00
OFFSET: 23.00 L	23.00	23.00	23.00
PAV. STA. 11+00	11+00	11+00	11+00
OFFSET: 23.00 L	23.00	23.00	23.00
PAV. STA. 10+00	10+00	10+00	10+00
OFFSET: 23.00 L	23.00	23.00	23.00
PAV. STA. 9+76.64	9+76.64	9+76.64	9+76.64
OFFSET: 23.00 L	23.00	23.00	23.00
PAV. STA. 9+50.00	9+50.00	9+50.00	9+50.00
OFFSET: 23.00 L	23.00	23.00	23.00
PAV. STA. 8+20.00	8+20.00	8+20.00	8+20.00
OFFSET: 23.00 L	23.00	23.00	23.00

PHASE 2B

BENCH MARK  
 SQUARE CUT IN CONCRETE AT BASE OF  
 600 MAIL IN 3rd PECAN TREE (TREE NO. 2914)  
 PAV. STA. 1+83.138 RT. AUDUBON LANE  
 ELEV.: 480.88

BENCH MARK  
 SQUARE APPROX TO BRIDGE OVER  
 SOUTH APPROX TO BRIDGE OVER  
 SQUARABLE CREEK ON HWY 205  
 ELEV.: 472.41

BENCH MARK  
 600 MAIL IN 1st PECAN TREE (TREE NO. 2114)  
 PAV. STA. 10+97.635 RT. AUDUBON LANE  
 ELEV.: 501.54

