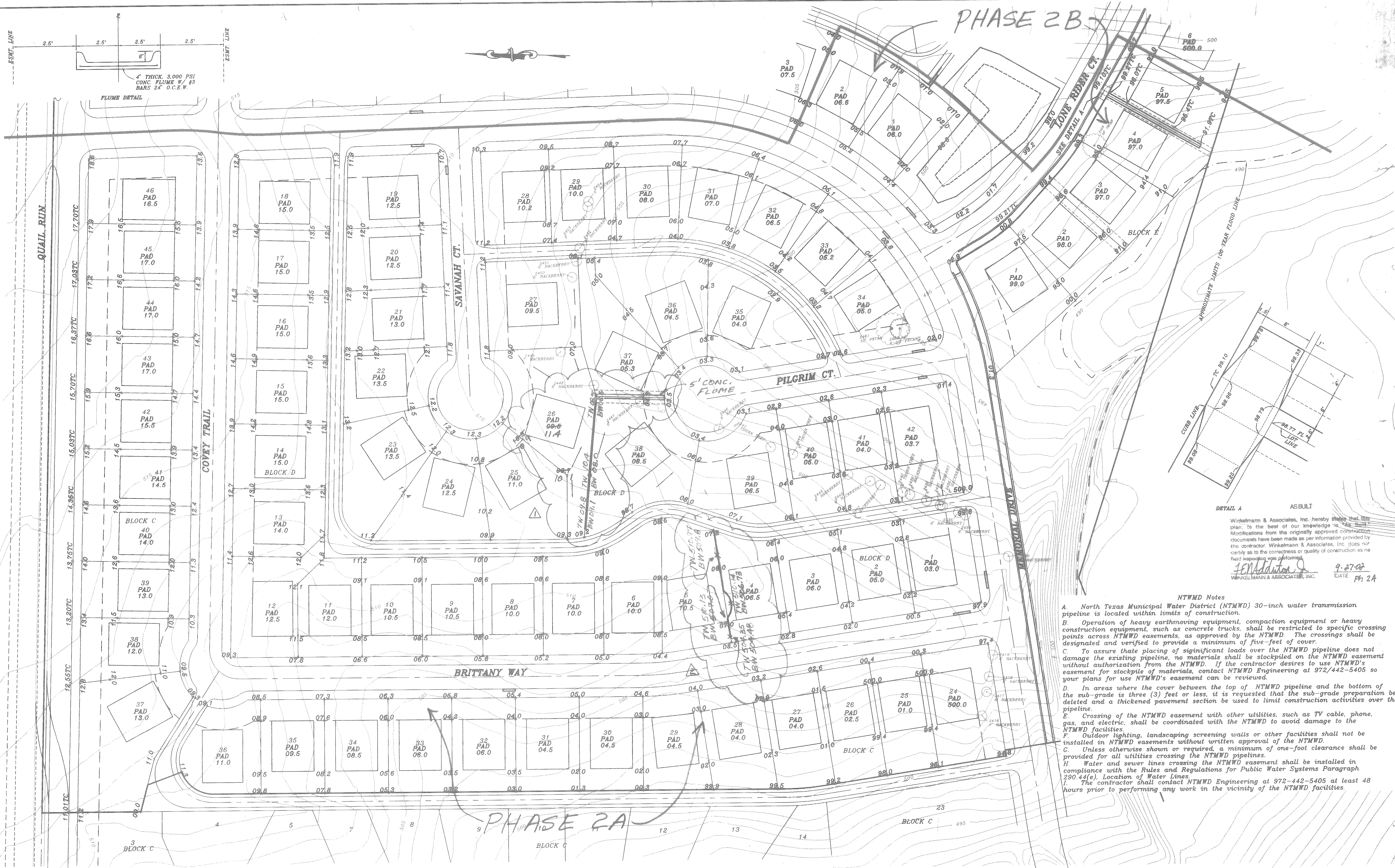


PHASE 2B



Winkelmann & Associates, Inc. hereby certifies that this plan is to the best of our knowledge and belief, modifications from the originally approved construction documents have been made as per information provided by the contractor. Winkelmann & Associates, Inc. does not certify as to the correctness or quality of construction as no field inspection was performed.
 J. F. Winkelmann
 WINKELMANN & ASSOCIATES, INC. DATE 9-27-02 PH 2A

- NTMWD Notes**
- A. North Texas Municipal Water District (NTMWD) 30-inch water transmission pipeline is located within limits of construction.
 - B. Operation of heavy earthmoving equipment, compaction equipment or heavy construction equipment, such as concrete trucks, shall be restricted to specific crossing points across NTMWD easements, as approved by the NTMWD. The crossings shall be designated and verified to provide a minimum of five-feet of cover.
 - C. To assure that placing of significant loads over the NTMWD pipeline does not damage the existing pipeline, no materials shall be stockpiled on the NTMWD easement without authorization from the NTMWD. If the contractor desires to use NTMWD's easement for stockpile of materials, contact NTMWD Engineering at 972/442-5405 so your plans for use NTMWD's easement can be reviewed.
 - D. In areas where the cover between the top of NTMWD pipeline and the bottom of the sub-grade is three (3) feet or less, it is requested that the sub-grade preparation be deleted and a thickened pavement section be used to limit construction activities over the pipeline.
 - E. Crossing of the NTMWD easement with other utilities, such as TV cable, phone, gas, and electric, shall be coordinated with the NTMWD to avoid damage to the NTMWD facilities.
 - F. Outdoor lighting, landscaping screening walls or other facilities shall not be installed in NTMWD easements without written approval of the NTMWD.
 - G. Unless otherwise shown or required, a minimum of one-foot clearance shall be provided for all utilities crossing the NTMWD pipelines.
 - H. Water and sewer lines crossing the NTMWD easement shall be installed in compliance with the Rules and Regulations for Public Water Systems Paragraph 290.44(e), Location of Water Lines.
 - I. The contractor shall contact NTMWD Engineering at 972-442-5405 at least 48 hours prior to performing any work in the vicinity of the NTMWD facilities.

BENCH MARK
 SQUARE CUT IN CONCRETE AT BASE OF
 CONCRETE WALL AT S.W. CORNER OF
 SOUTH APPROACH TO BRIDGE OVER
 SQUABLE CREEK ON HWY. 205
 ELEV.: 472.41

BENCH MARK
 60D NAIL IN 36" PECAN TREE (TREE NO. 2302)
 PAY. STA. 8+30, 71' RT., MEMORIAL DRIVE
 ELEV.: 466.79

BENCH MARK
 60D NAIL IN 34" PECAN TREE (TREE NO. 2314)
 PAY. STA. 1+83, 138' RT., AUDOBON LANE
 ELEV.: 480.88

BENCH MARK
 60D NAIL IN 18" PECAN TREE (TREE NO. 2114)
 PAY. STA. 10+97, 63.5' RT., AUDOBON LANE
 ELEV.: 501.54



| | |
|--------------------------|----------|
| ADDED WALL, FLUME | 8/26/02 |
| REVISED PAD GRADE | 7/13/02 |
| ADDED WALL | |
| REV. | 11/25/01 |
| REV. PER 4th CITY REVIEW | 7/13/01 |
| REV. PER 2nd CITY REVIEW | 5/12/01 |

HAROLD L. EVANS
 CONSULTING ENGINEER
 P.O. BOX 28355
 2331 GUS THOMASSON ROAD, SUITE 102
 DALLAS, TEXAS 75229, (214) 328-8133

| | | | |
|-------------------------------|----|---------|------|
| LOT GRADING PLAN | | | |
| QUAIL RUN VALLEY NO. 2 | | | |
| CITY OF ROCKWALL | | | |
| SHEET NO. | 22 | JOB NO. | 0020 |

| REVISION DESCRIPTION | DATE | SCALE | DESIGN | DRAWN |
|-----------------------|--------|----------|--------|-------|
| 0000 BRASSER 0020GR21 | 2/1/01 | 1" = 50' | H.L.E. | |