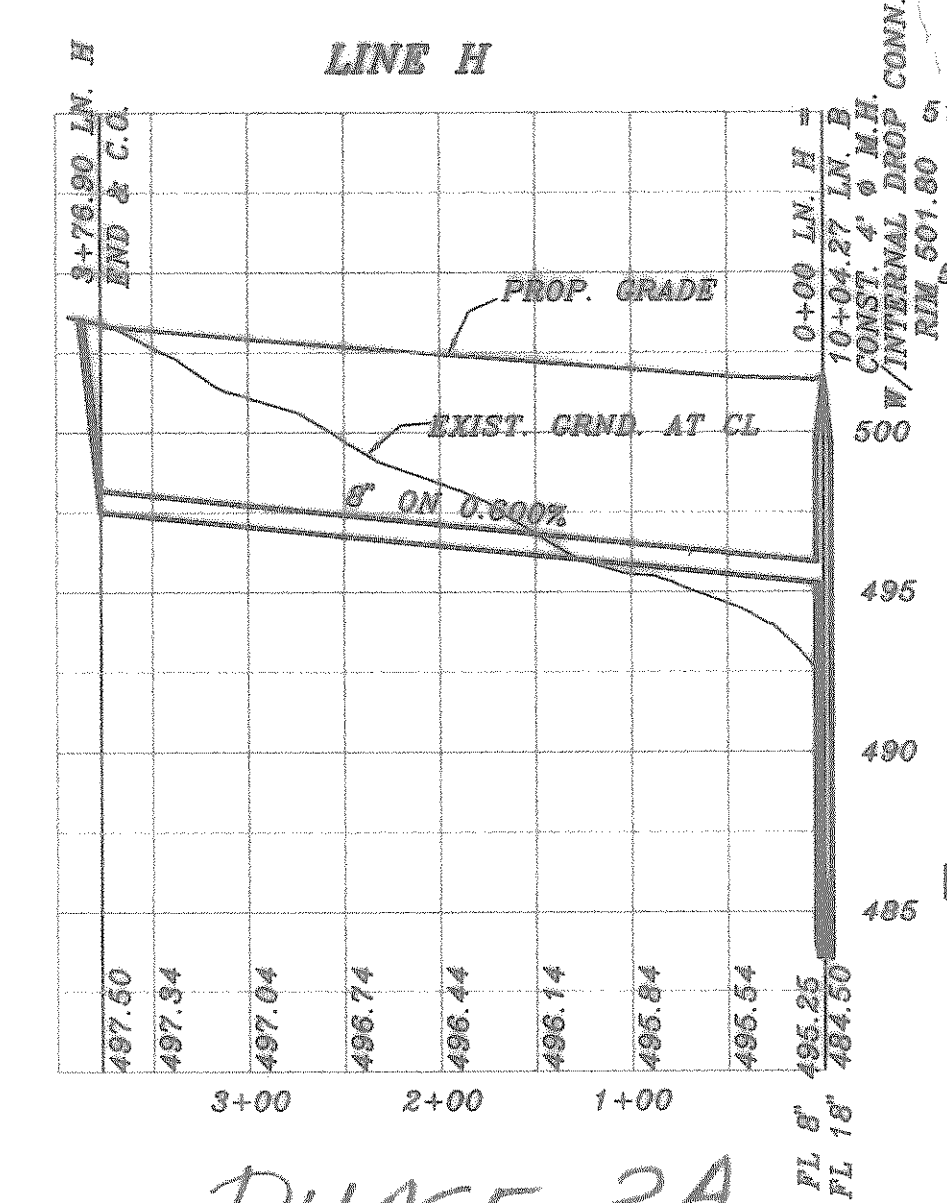
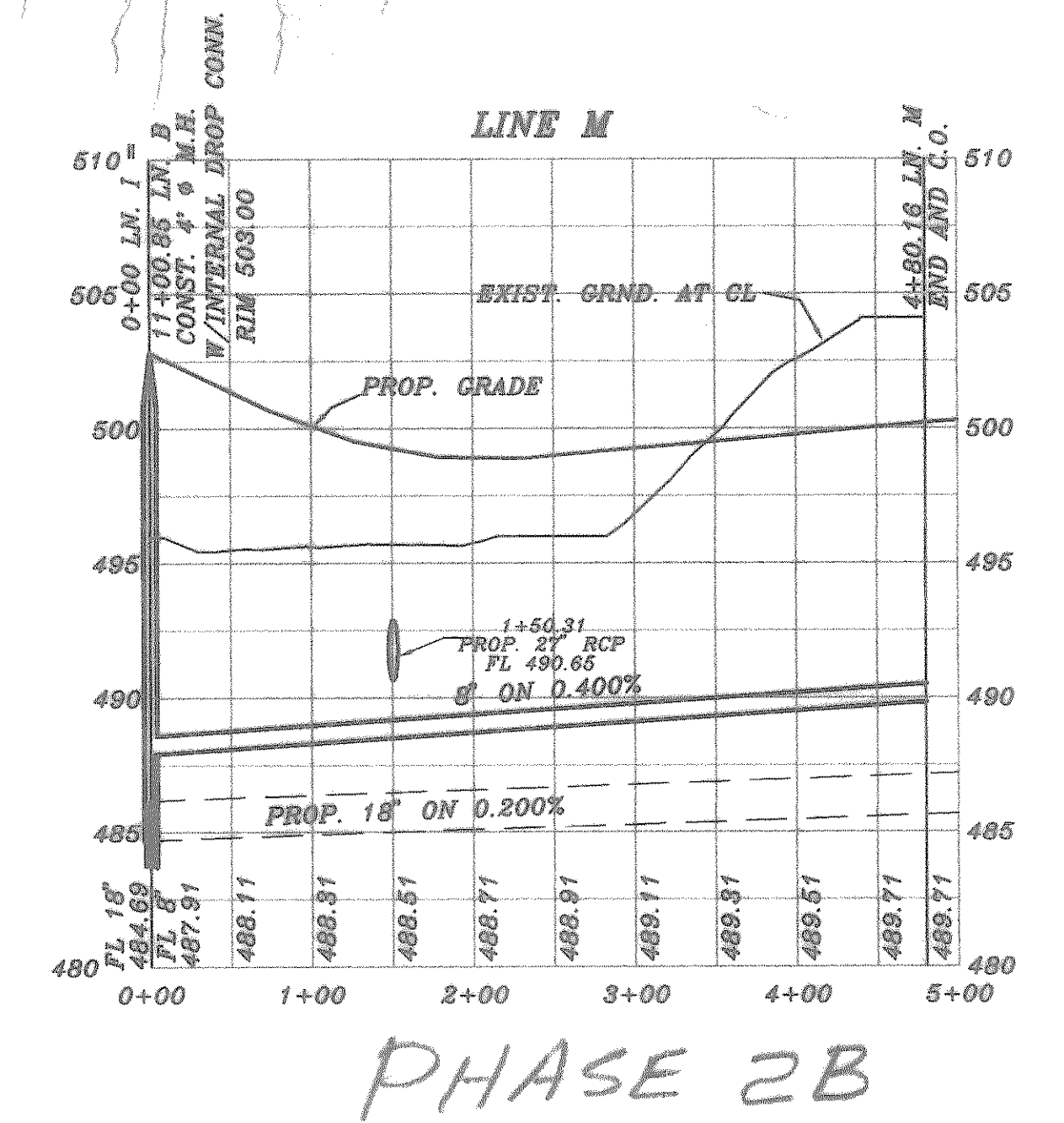


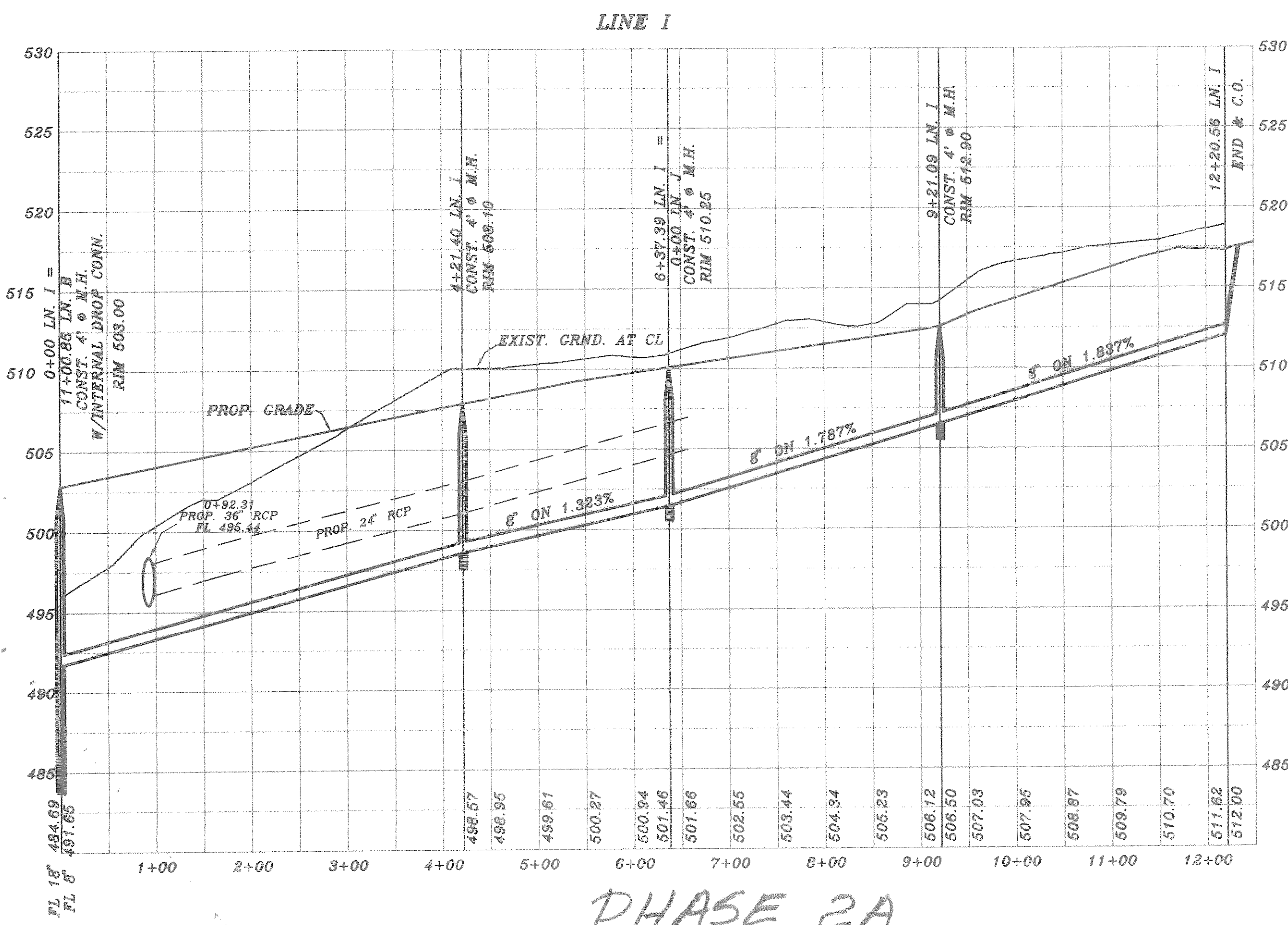
PHASE 2A



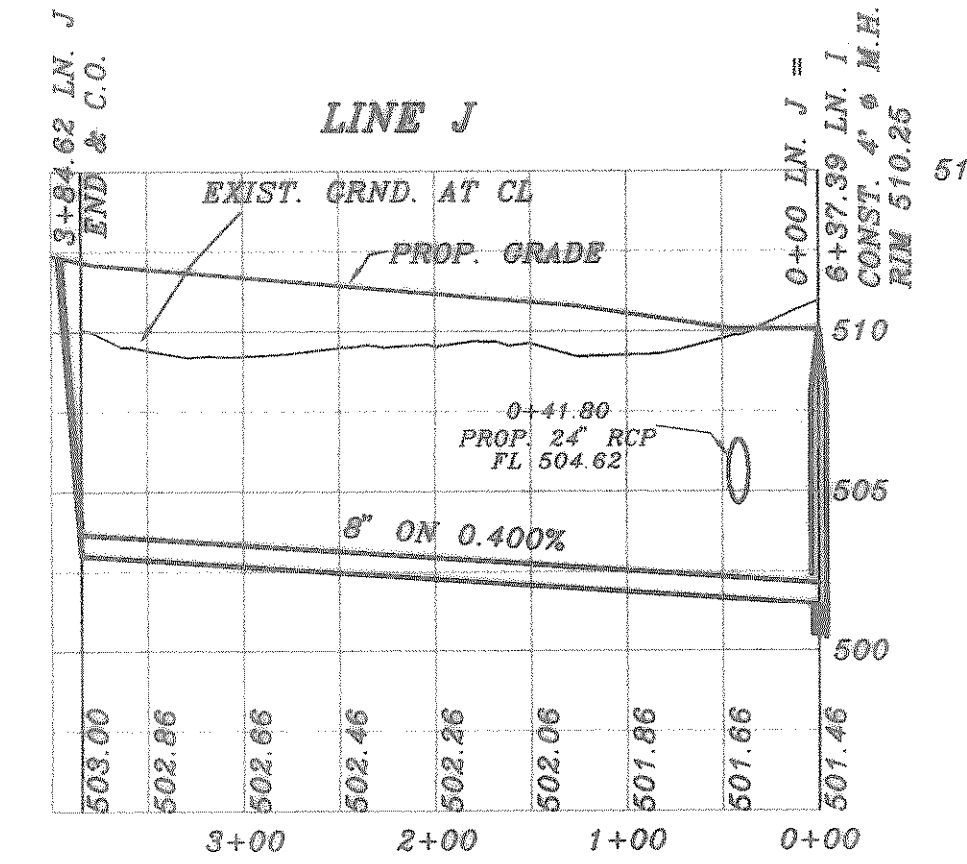
PHASE 2A



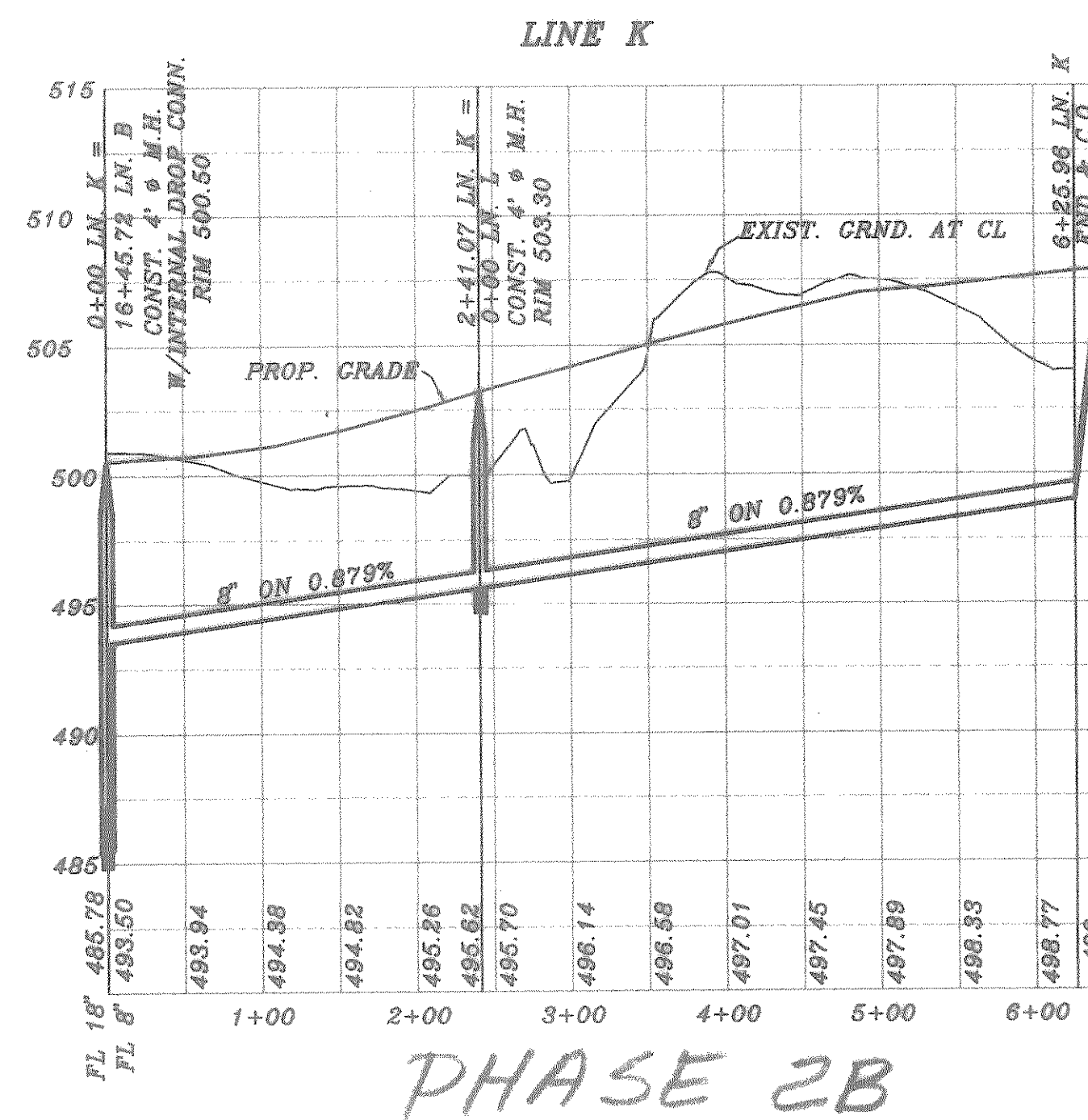
PHASE 2B



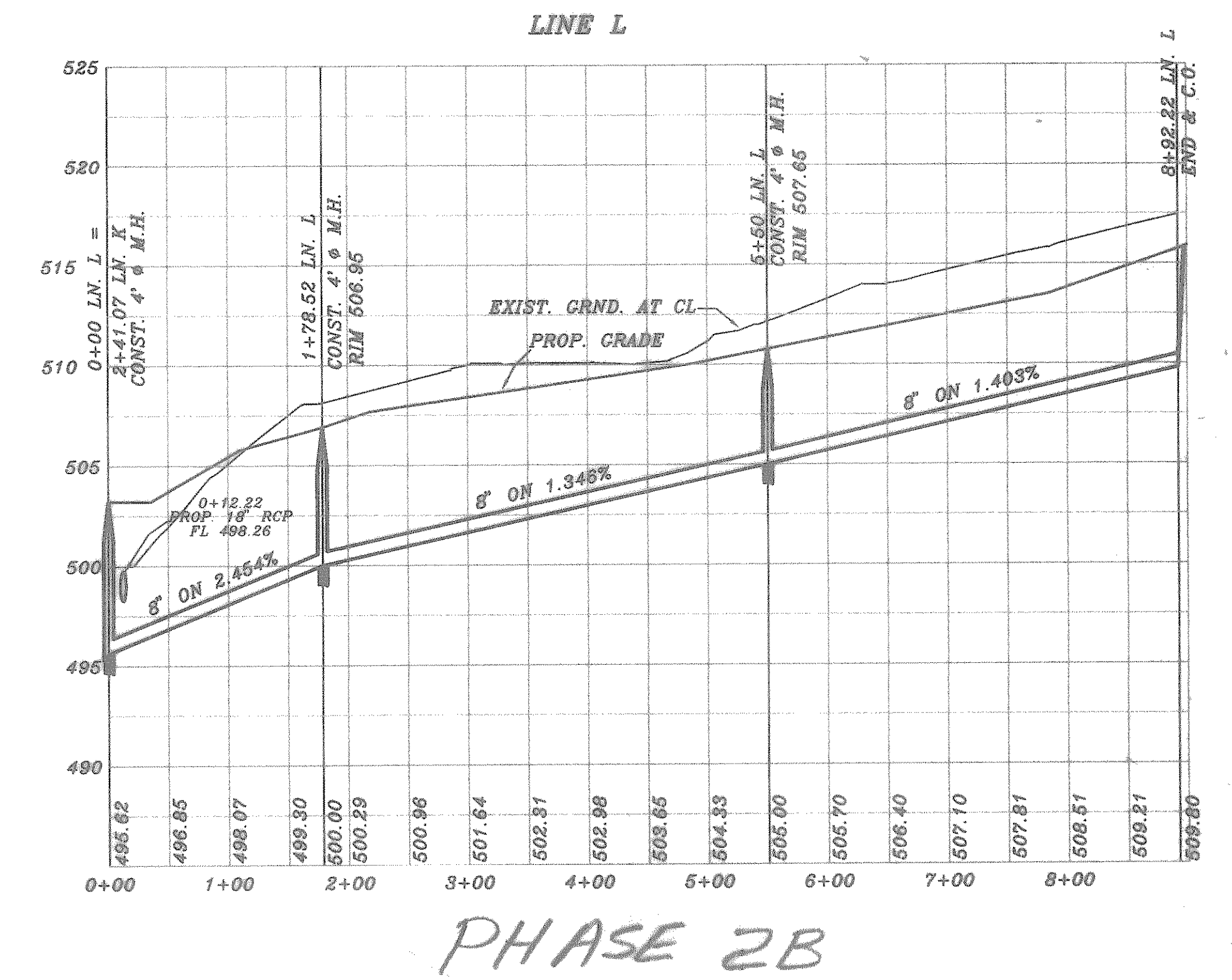
PHASE 2A



PHASE 2A



PHASE 2B



PHASE 2B

BENCH MARK
SQUARE CUT IN CONCRETE AT BASE OF
CONCRETE WALL AT S.W. CORNER OF
SOUTH APPROACH TO BRIDGE OVER
SQUABBLE CREEK ON HWY. 205
ELEV.: 472.41

BENCH MARK
60D NAIL IN 36" PECAN TREE (TREE NO. 2302)
P&V STA. 8+30, 71' RT. MEMORIAL DRIVE
ELEV.: 466.79

BENCH MARK
60D NAIL IN 34" PECAN TREE (TREE NO. 2314)
P&V STA. 1+63, 138' RT. AUDUBON LANE
ELEV.: 480.88

BENCH MARK
60D NAIL IN 18" PECAN TREE (TREE NO. 2114)
P&V STA. 10+97, 63.5' RT. AUDUBON LANE
ELEV.: 501.54

AS BUILT

Winkelmann & Associates, Inc. hereby states that this plan, to the best of our knowledge is "As Built". Modifications from the originally approved construction documents have been made as per information provided by the contractor, Winkelmann & Associates, Inc. does not certify as to the correctness or quality of construction as no field inspection was performed.

FE Winkelmann
WINKELMANN & ASSOCIATES, INC. DATE 9-27-02 PH 2A



REVISION DESCRIPTION 0020, REVISION 0020/09/22		DATE 6/13/01 6/13/01 6/10/01	SCALE 1" = 100' 1" = 6"	DESIGN H.L.E.	DRAWN	SHEET NO. 21 24 JOB NO. 0020
HAROLD L. EVANS CONSULTING ENGINEER P.O. BOX 28355 2331 CUS THOMASSON ROAD, SUITE 102 DALLAS, TEXAS 75226, (214) 328-8133		PROPOSED UTILITIES QUAIL RUN VALLEY NO. 2		CITY OF ROCKWALL		