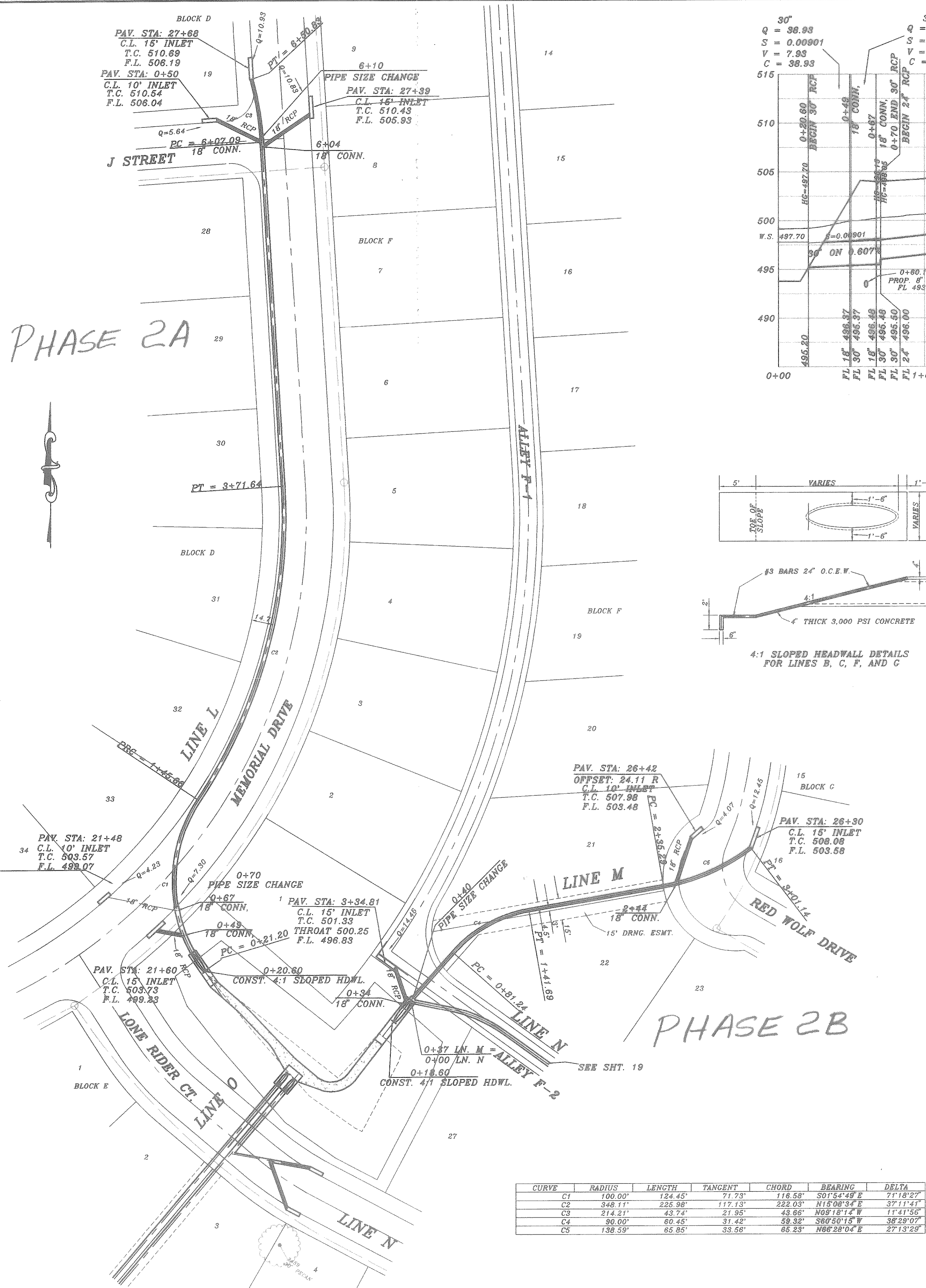
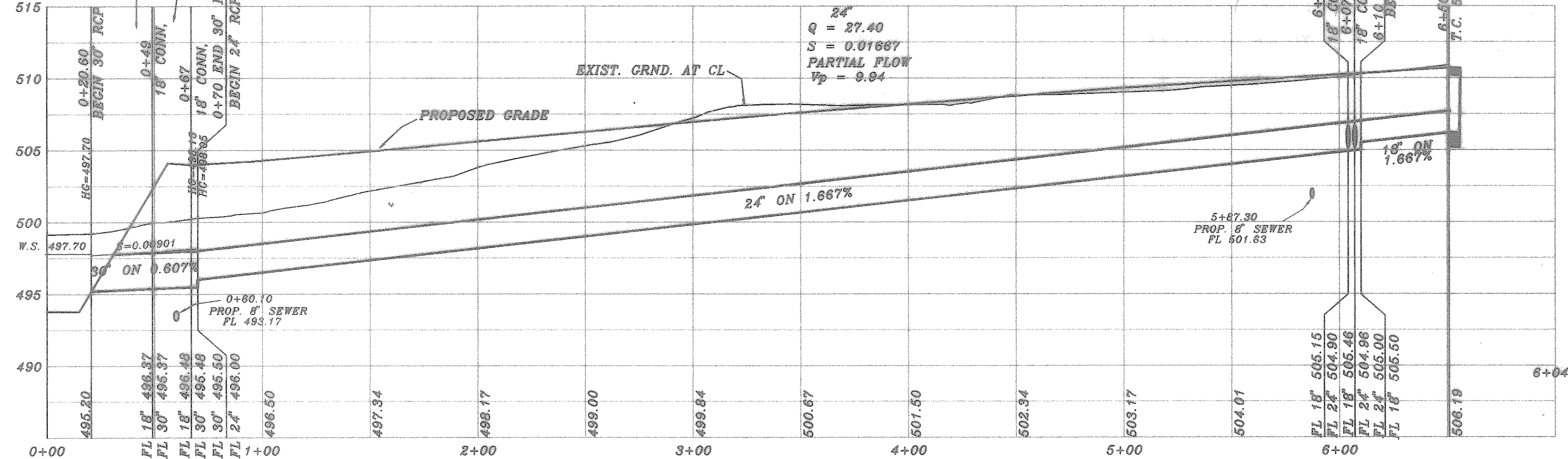


PHASE 2A

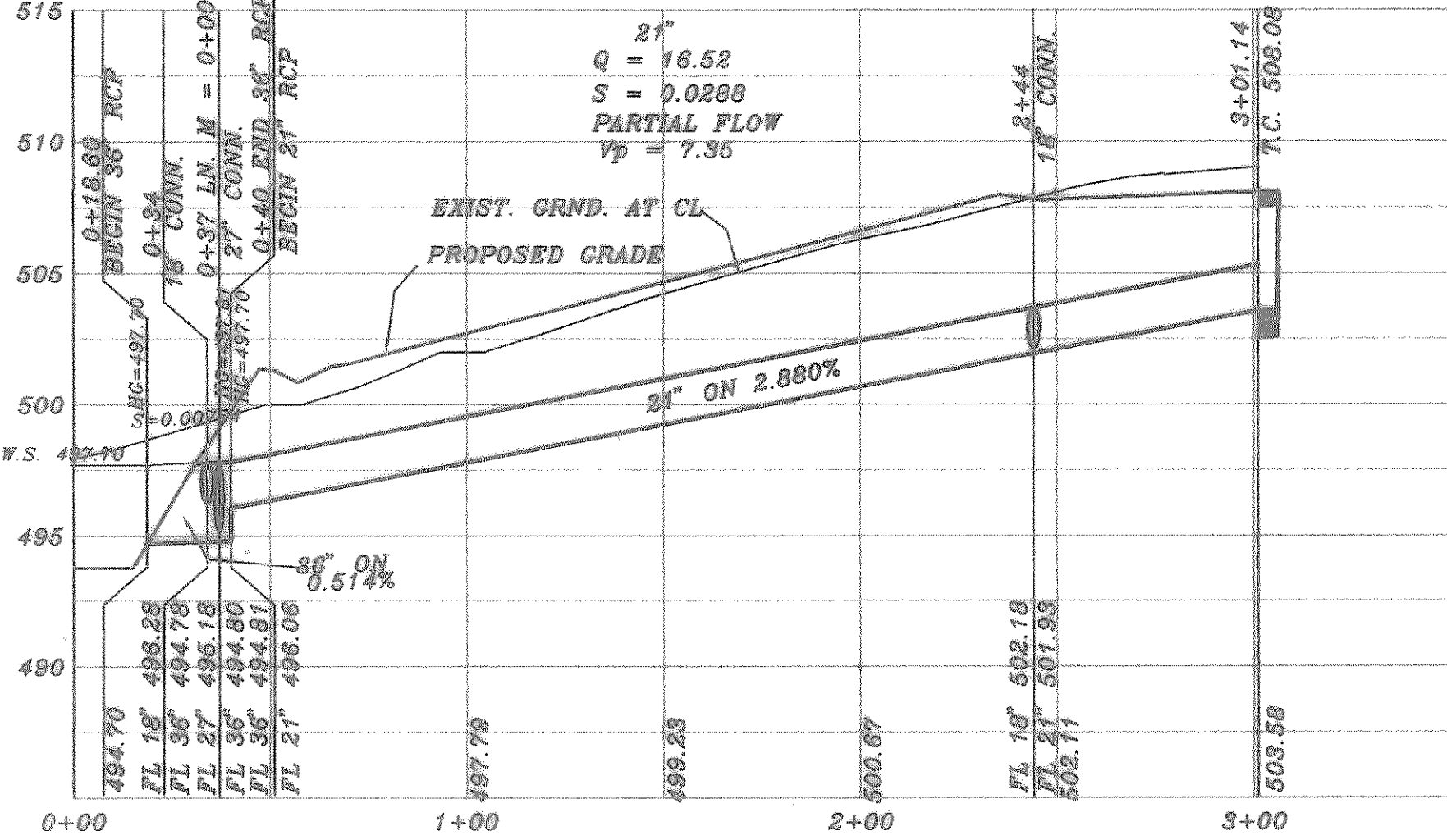


30'
Q = 38.93
S = 0.00901
V = 7.93
C = 38.93

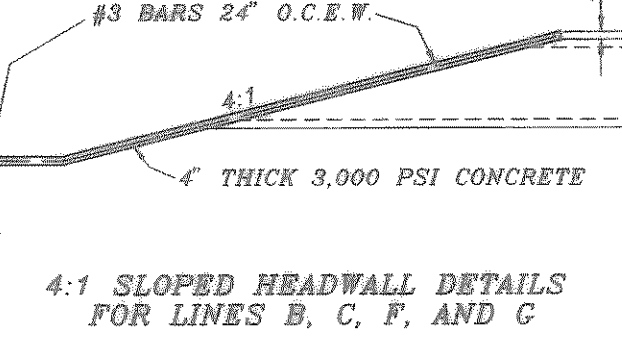
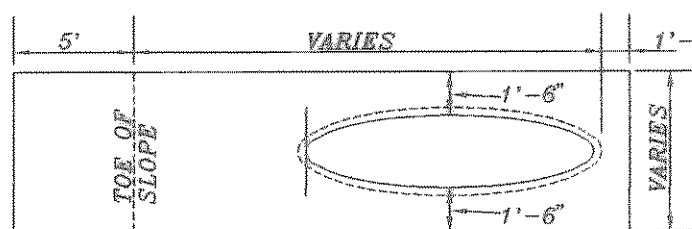


PHASE 2A

36'
Q = 57.86
S = 0.00754
V = 8.17
C = 57.86

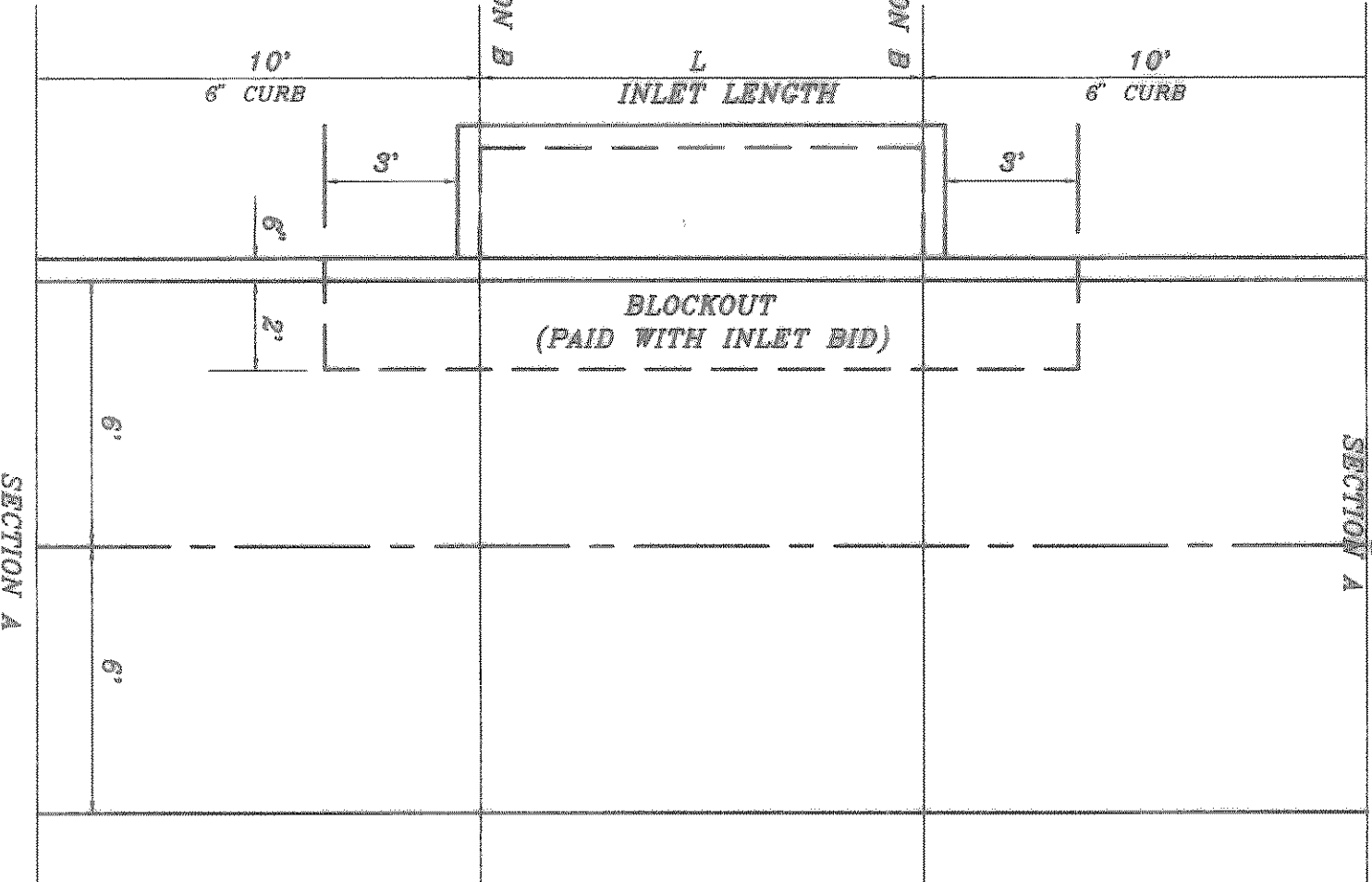


PHASE 2B

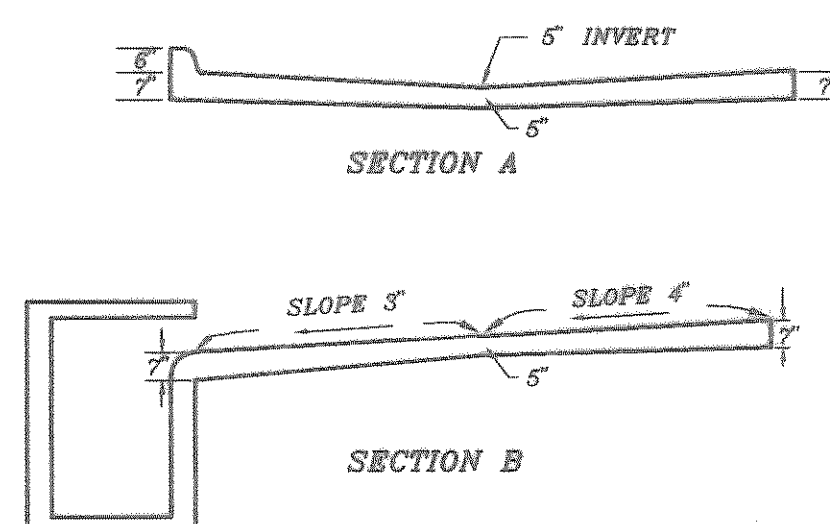


BENCH MARK
SQUARE CUT IN CONCRETE AT BASE OF
CONCRETE WALL AT S.W. CORNER OF
SOUTH APPROACH TO BRIDGE OVER
SQUABBLE CREEK ON HWY. 205
ELEV.: 472.41

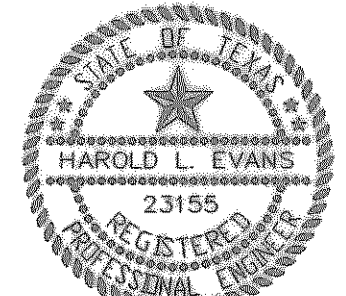
BENCH MARK
80D NAIL IN 34\"/>



ALLEY INLET SECTION
SCALE: 1" = 4'



ASBUILT
Winkelmann & Associates, Inc. hereby states that this
plan, to the best of our knowledge is "As Built."
Modifications from the originally approved construction
documents have been made as per information provided by
the contractor. Winkelmann & Associates, Inc. does not
warrant as to the correctness or quality of construction as no
field inspection was performed.
J.E. Winkelmann
WINKELMANN & ASSOCIATES, INC.
9-27-02
DATE Ph 2A



CURVE	RADIUS	LENGTH	TANGENT	CHORD	BEARING	DELTA
C1	100.00'	124.45'	71.73'	118.58'	S01°34'49" E	71°18'27"
C2	348.11'	225.98'	117.13'	222.03'	N15°08'34" E	37°11'41"
C3	214.21'	43.74'	21.95'	43.66'	N08°18'14" W	11°41'56"
C4	90.00'	60.45'	31.42'	59.32'	S60°50'15" W	38°29'07"
C5	138.59'	65.85'	33.56'	65.23'	N66°28'04" E	27°13'29"

HAROLD L. EVANS
CONSULTING ENGINEER
P.O. BOX 28355
2331 GUS THOMASSON ROAD, SUITE 102
DALLAS, TEXAS 75228, (214) 328-8133

REV. PER 4th REVIEW 7/13/01
REV. PER 2nd REVIEW 5/10/01

DATE 2/1/01
SCALE 1" = 40'
1" = 6'

DESIGN H.L.E.
DRAWN

PROPOSED DRAINAGE
LINE L AND M
QUAIL RUN VALLEY NO. 2
CITY OF ROCKWALL

SHEET NO.
18
24
JOB NO.
0020